

'L' service overview

Line/route	Weekdays	Saturday	Sunday/hol.
Red Line Howard–Dan Ryan via downtown subway	All times 🚶	All times 🚶	All times 🚶
Blue Line O'Hare 🚶–Forest Park via downtown subway	All times 🚶	All times 🚶	All times 🚶
Brown Line Kimball–downtown via Loop elevated	early morning- late evening	early morning- late evening	early morning- late evening
Green Line Harlem–Ashland/63rd– Cottage Grove via downtown	early morning- late evening	early morning- late evening	early morning- late evening
Orange Line Midway 🚶–downtown via Loop elevated	early morning- late evening	early morning- late evening	early morning- late evening
Purple Line Linden–Howard local shuttle service	early morning- late evening	early morning- late evening	early/mid morning- late evening
Purple Line Express Linden–downtown express, via Loop elevated	Weekday rush periods, only	<i>At all other times, change at Howard between Purple Line shuttle and Red Line services.</i>	
Pink Line 54th/Cermak–downtown, via Loop elevated	early morning- late evening	early morning- late evening	early morning- late evening
Yellow Line 🚶 Dempster-Skokie– Howard shuttle service	early morning- mid/late evening	early morning- mid/late evening	early morning- mid/late evening

i Use trip planners or visit transitchicago.com/schedules for detailed schedule information, alerts and other service details.

Quick fares

Fare type	Full	Reduced
'L' train fare	\$2.50	\$1.25
'L' train fare from O'Hare	5.00	1.25
Bus fare*	2.25	1.10
Transfers <small>up to 2 add'l rides on CTA within 2 hours of a new fare</small>	free	free
1-Day Pass (24 hrs)	5	
3-Day Pass (72 hrs)	15	

- v** Download the Ventra app to manage your Ventra Card's balance and passes. You can even add a Ventra Card to your device!
- i** Most above fares and passes are available with Ventra Cards. Regular per-ride fares also valid when using contactless [™].
- i** Vending machines in every CTA 'L' station sell new Ventra Cards and also limited-use/disposable tickets (Single-trip, 1-Day, etc.).
- !** *If using cash/coin directly on bus, full fare is \$2.50 or \$1.10 reduced—exact change required, transfers not available.
- ?** Visit transitchicago.com/fares for full details on CTA fares, special fare programs (reduced, student, etc.) and more.

When riding the train

- ♿** All CTA railcars are accessible. See staff for help with "gap fillers" for boarding at accessible stations and check alerts at transitchicago.com.
- !** Federal law requires priority seating be designated for seniors and people with disabilities. **Please stand up** and yield these seats are needed for qualifying riders or when asked.
- i** Pay attention to destination signs and announcements when boarding and riding; some trains on some lines may not travel the full length of a line as part of schedules or service management.
- 🚲** Up to 2 bicycles are permitted per railcar during most hours and most days. See our Bike & Ride brochure or website for help, how-tos and more.
- 📶** Visit transitchicago.com/traintracker for real-time arrivals and scheduled departure times. Make note of the radio wave symbol 📶 when you see it—this means it's live, real-time info.

Get help & service updates

- i** Travel information:
1-312-836-7000 (or 711 relay)
- ?** Customer service:
1-888-YOUR-CTA (or 711 relay)
- 🖱️** Website (Info, help & feedback):
transitchicago.com
- !** Get service alerts by text or e-mail
transitchicago.com/updates

Cover art

"Floral Pops", 2023

Stems of circles allude to the family of colors of the 'L' routes, rotated to create a playful pattern for Chicago, whose motto is "urbs in horto" (Latin, "city in a garden").

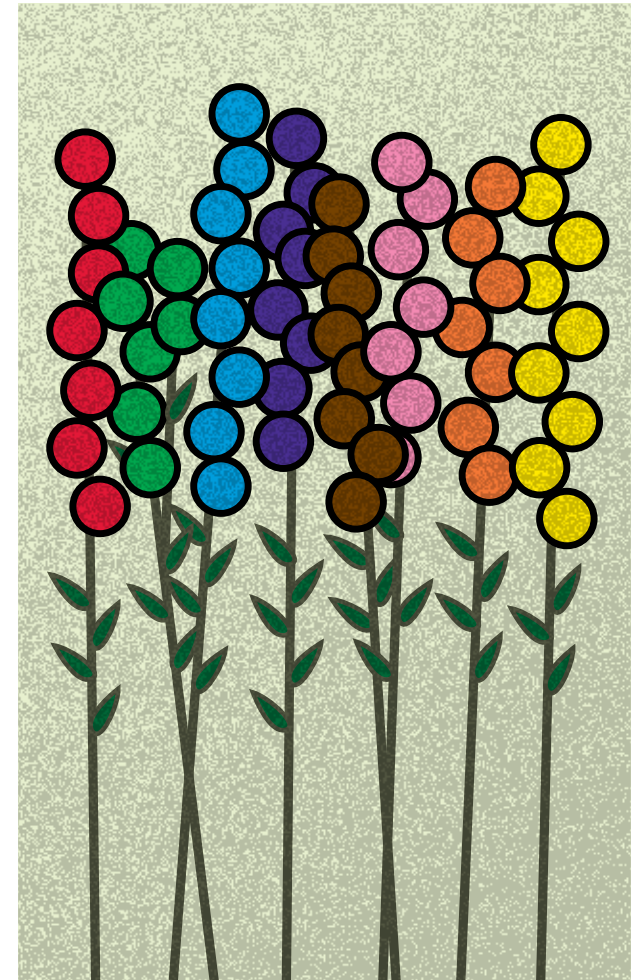
Don't have a farecard or ticket?

Contactless payments accepted at the fare reader—use a bankcard or Pay app for regular per-ride fares!



'L' (rail) system map

July 2023

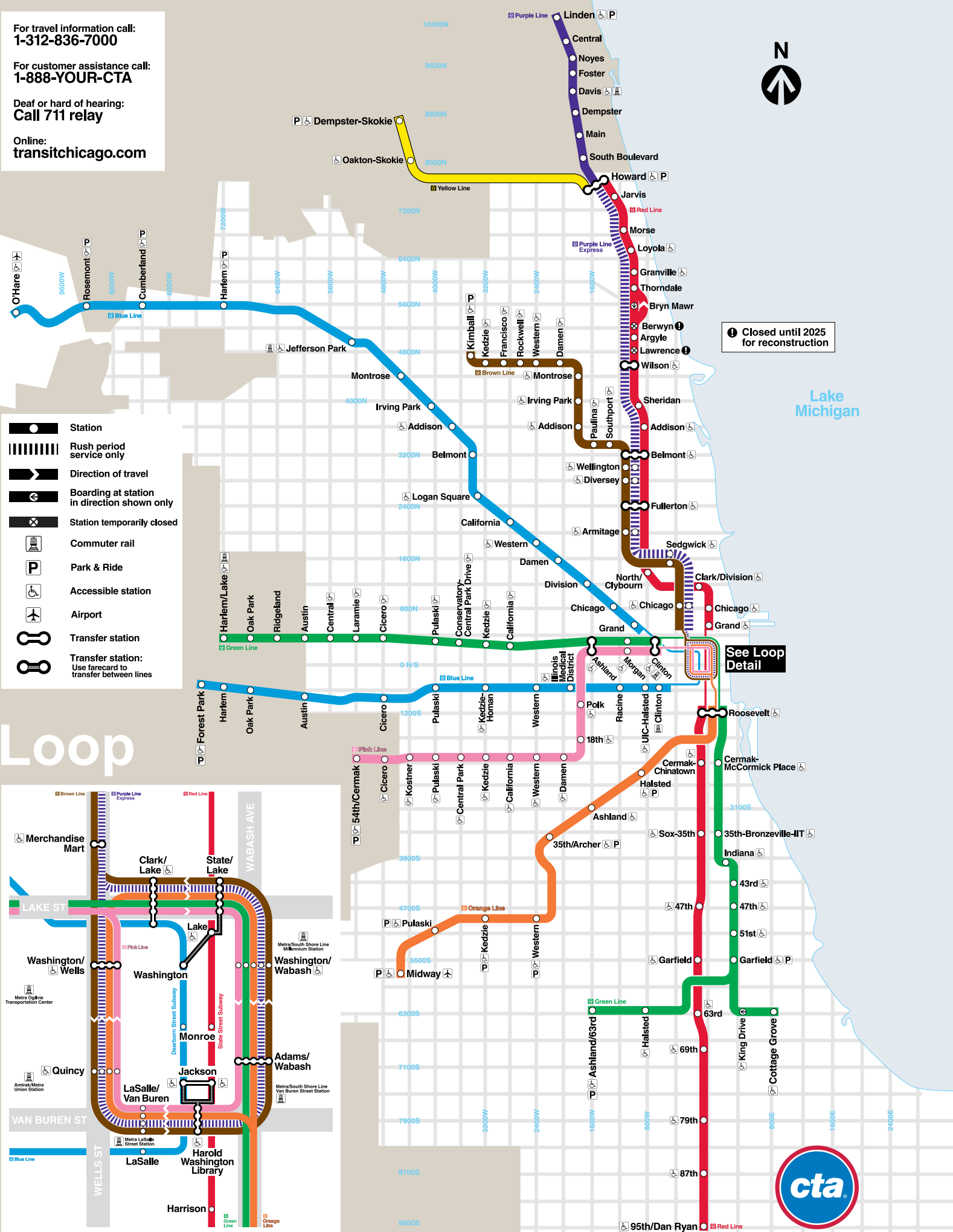


For travel information call:
1-312-836-7000

For customer assistance call:
1-888-YOUR-CTA

Deaf or hard of hearing:
Call 711 relay

Online:
transitchicago.com



1 Closed until 2025 for reconstruction

See Loop Detail

- Station
- Rush period service only
- Direction of travel
- Boarding at station in direction shown only
- Station temporarily closed
- Commuter rail
- Park & Ride
- Accessible station
- Airport
- Transfer station
- Transfer station: Use farecard to transfer between lines

Loop

