



**KEEPING
YOU **SAFE**
ON THE CTA.**

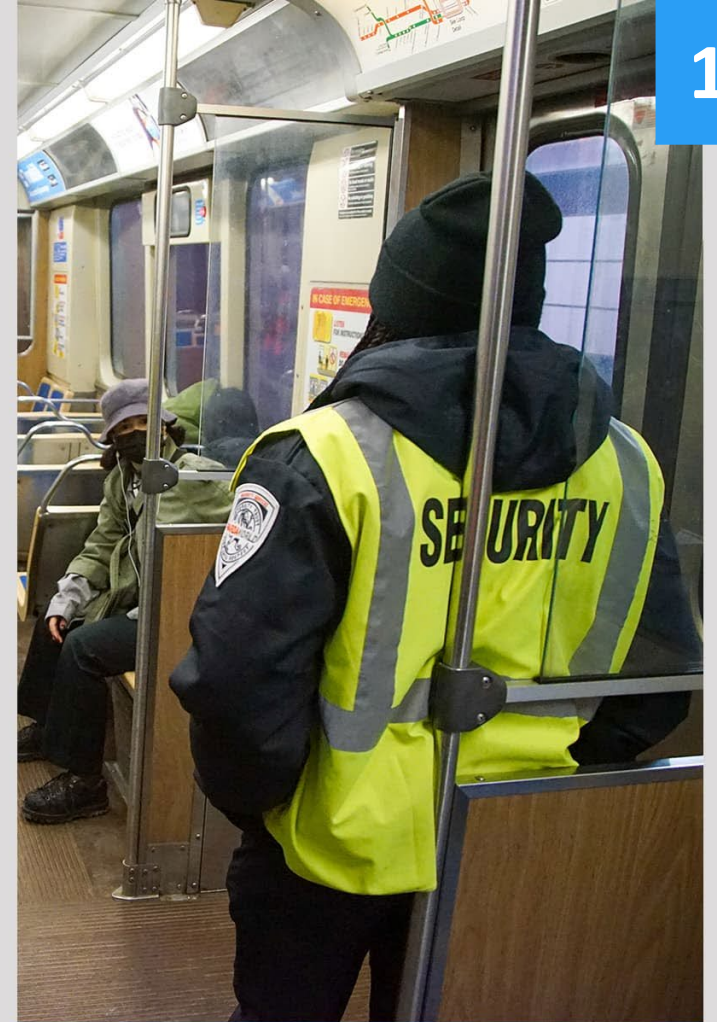


YOUR safety and security
is our TOP priority.
Always!



OUR **NO. 1** PRIORITY.

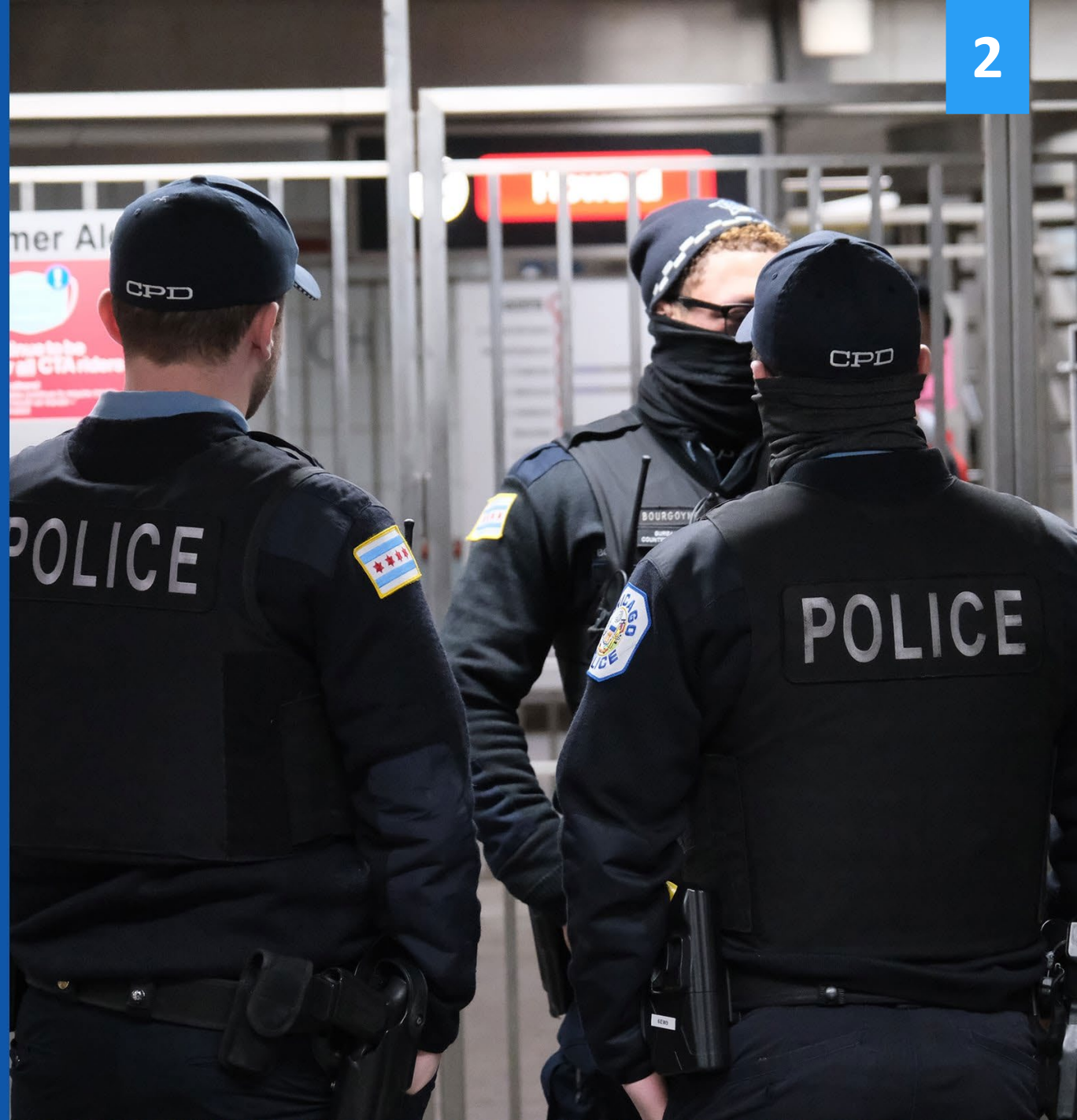
The CTA and the
Chicago Police
Department (CPD)
are committed to
providing a safe
commute for customers
and employees.



This commitment has
never wavered.

CHICAGO POLICE DEPARTMENT

- The Chicago Police Department provides law enforcement for the CTA
- CPD has handled policing for CTA since the 1980s





CHICAGO POLICE PATROLS

- CPD's Public Transportation Section - a special unit of officers - patrol stations, platforms and trains 24 hours a day, seven days a week.



CHICAGO POLICE ADDED RESOURCES

- In March 2022, CPD deployed officers from its Counterterrorism Unit to focus on gang and narcotics activity



CHICAGO POLICE ADDED RESOURCES

- New Strategic Decision Support Center, with dedicated detectives and monitoring of security cameras



Out to street and buses

Not in use

Use this door



UNARMED SECURITY GUARDS

- Designed to supplement Chicago Police, and provide additional eyes and ears on the system



UNARMED SECURITY GUARDS

- Guards identify and report crimes and suspicious behavior, and encourage compliance with CTA's Rules of Conduct
- Trained in de-escalation techniques
- In March 2022, CTA doubled the number of security guards to more than 300



SECURITY CAMERAS - TRAINS

- Multiple cameras in each railcar
- New 7000-series railcar:
 - Video feed displays by the doors reminding customers that they are on camera



BUS SECURITY FEATURES

Driver barriers:

- Every in-service bus is equipped with a protective shield, providing a barrier between the operator and customers



BUS SECURITY FEATURES

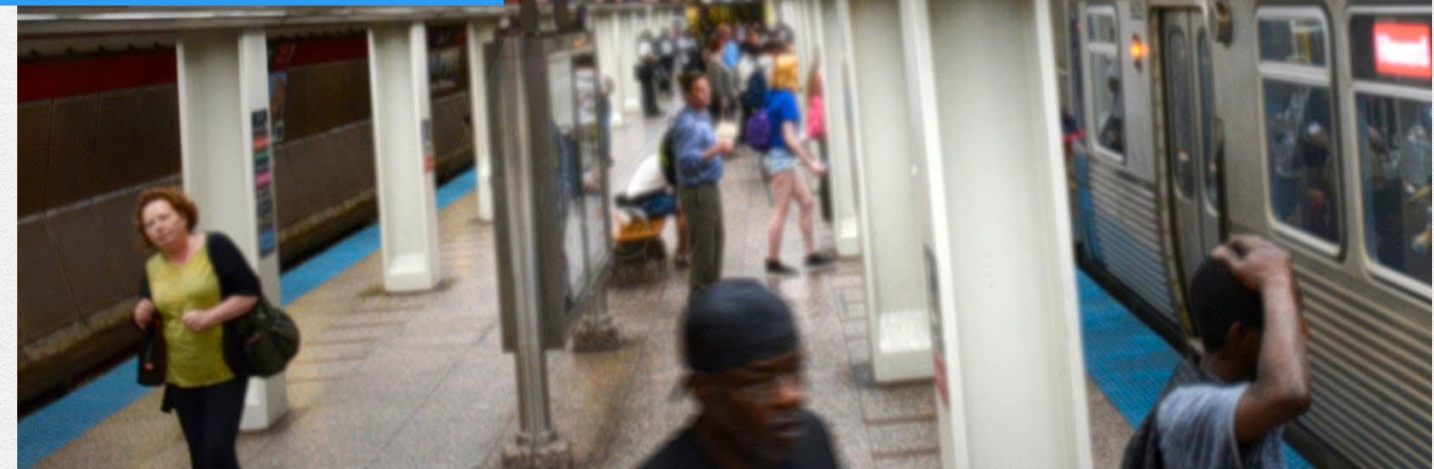
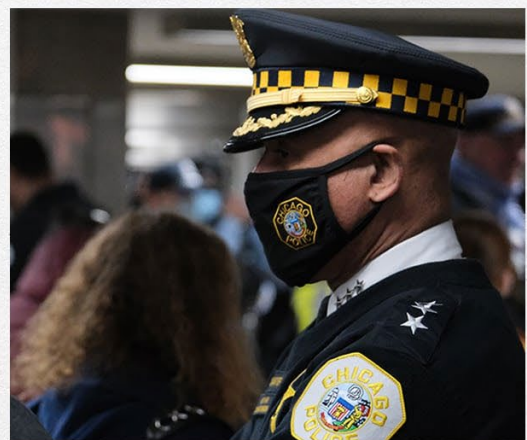
- Silent alarm accessible to bus driver
- Up to 12 security cameras per vehicle, depending on model



CTA SECURITY INVESTMENTS AND MEASURES



The CTA has taken multiple steps over the years and invested significantly in equipment and systems to keep our customers and employees safe.



CTA SECURITY INVESTMENTS & MEASURES



- A multi-year, multi-faceted program to modernize and further expand CTA's already extensive surveillance camera network started in 2018
- Upgrading more than 3,800 existing cameras to high-definition (HD)
- An additional 2,000 HD cameras for more comprehensive coverage now installed at stations on the Red, Blue, Brown, Green, Orange and Pink lines
- Addition of emergency telephones at all stations
- Addition of video monitors in CSA Booths for real-time camera viewing various bus turnarounds with new security cameras



CTA SECURITY INVESTMENTS & MEASURES

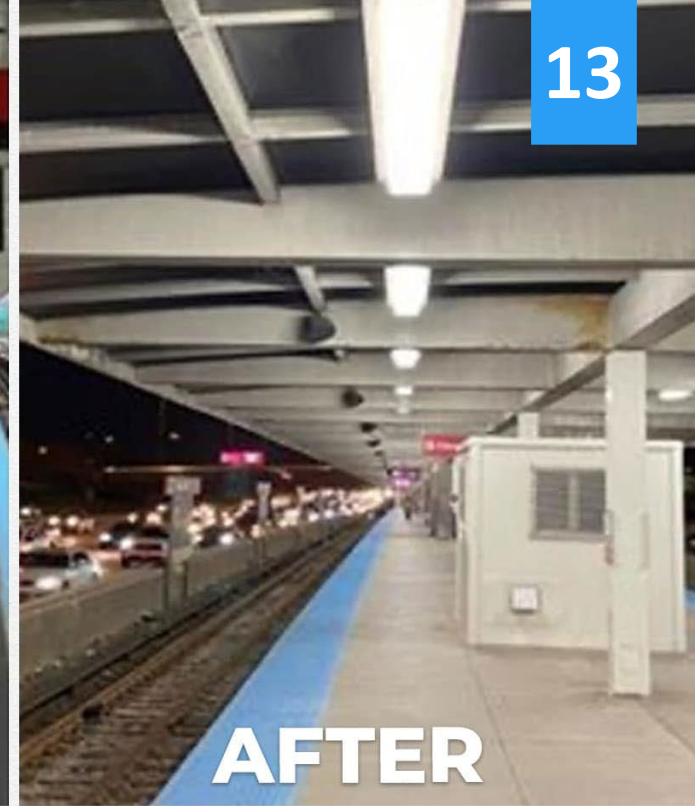


refresh
& renew

- Promotes safety and security through cyclical maintenance and improvements
- Each year, select stations receive a variety of improvements including lighting upgrades to improve security, repainting of surfaces, power washing and more
- Program was expanded last year to target nearly 90% of CTA's rail stations, helping us keep the system running by providing a safe and clean transit environment



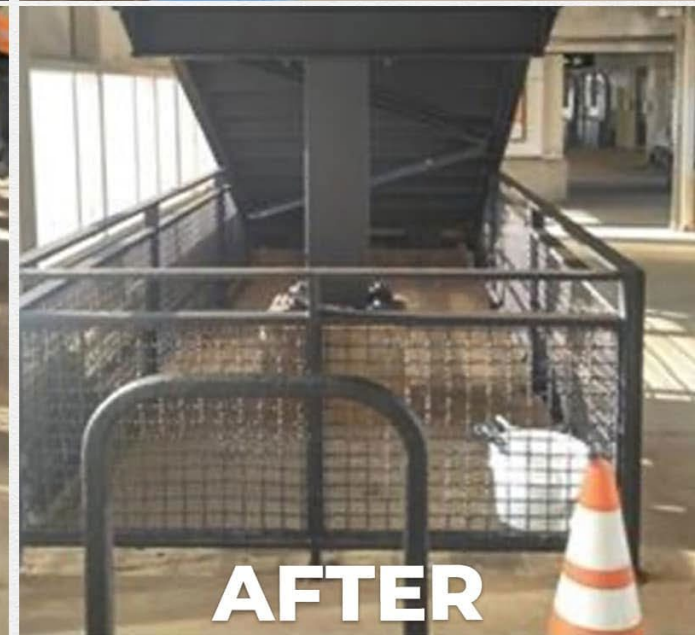
BEFORE



AFTER



BEFORE



AFTER

CTA SECURITY INVESTMENTS & MEASURES



Safety Committee
(New – March 2022)

- Per requirement set forth in the Infrastructure Investment and Jobs Act (IIJA)
- Committee comprised of:
 - Union leaders and members
 - CTA frontline workers
 - CTA personnel involved in safety, security, operations, maintenance and more
- Charged with discussing challenges and possible solutions for creating a safer and healthier work environment





**YOU CAN HELP
MAKE  SAFER.**

- Remain aware of your surroundings
- Notify CTA personnel immediately if you see or suspect criminal behavior
- If you encounter a threat or safety issue, please contact 9-1-1 for assistance



KEEPING YOU **SAFE** ON THE CTA.

1

We take safety and security seriously.

2

We value our customers and employees.

3

We'll continue to work hard each day to provide a safe and reliable travel experience for YOU!