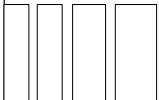


**Federal Transit Administration's
New Starts Process**

Red Line Extension Alternatives Analysis Study

4-5-2007



Schedule for Tonight's Meeting

- **Structure of the Meeting**
- **Questions and Answers Process**
 - Submit your comments in writing on comment cards
 - Comments and questions will be grouped and answered by topic
 - All comments and questions will be addressed on CTA's website - www.transitchicago.com
 - An interpreter for the hearing impaired and a translator for the Spanish speaking community are available this evening



Tonight's Speakers

- **Darud Akbar – Moderator**
 - Chicago Transit Authority
- **Jeffrey Sriver – Project Manager**
 - Chicago Transit Authority
- **Ronald Shimizu – Red Line Study Area Manager**
 - PB Americas, Inc.

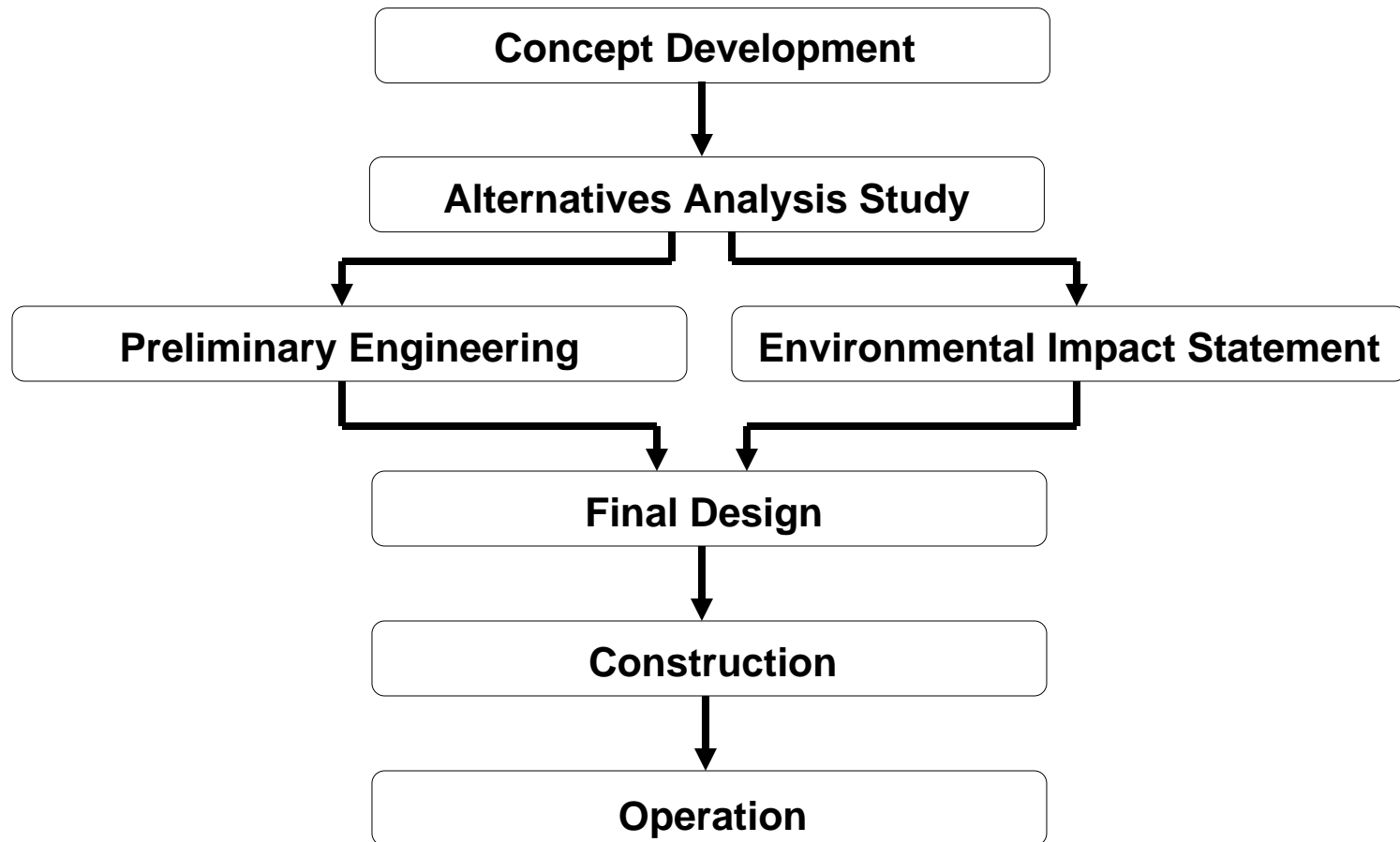


Outline of the Presentation

- **Describe Federal Transit Administration's (FTA) Required "New Starts" Process**
- **Define Alternatives Analysis Study Steps**
- **Emphasize Importance of Public Involvement Process**
- **Discuss Status of Red Line Extension Alternatives Analysis Study**



FTA's Required New Starts Process



Alternatives Analysis (AA) Studies

- **FTA Requirement for Federal Funding for Transit Expansion (New Starts)**
- **Identifies Transit Opportunities and Ensures All Practical Solutions are Considered**
- **Ensures Planning is Consistent Among All New Starts Projects Throughout the Country**
- **Provides Opportunity to Gather Information and Receive Public Input**
- **Identifies Locally Preferred Alternative**



Alternatives Analysis Process – Key Steps

Public Involvement

- **Define Purpose and Need**
- **Identify all Possible Transportation Alternatives called the “Universe of Alternatives”**
- **Evaluate Viability of Possible Alternatives through a Screening Procedure**
- **Identify Locally Preferred Alternative**

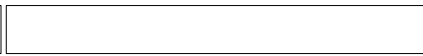


Public Involvement Process

- **Key Component of the Alternatives Analysis Study**
- **Opportunity to Provide Information and Receive Public Input**
 - Your comments are needed to complete this screening process
- **Community Outreach:**
 - General public, elected officials, community and civic organizations, faith-based organizations, city and state agencies
- **Ongoing Public Involvement/Input**
 - Meetings announced through public notices and advertisements
 - Project updates on the CTA web site - www.transitchicago.com, accessible at local public libraries



Status of Study

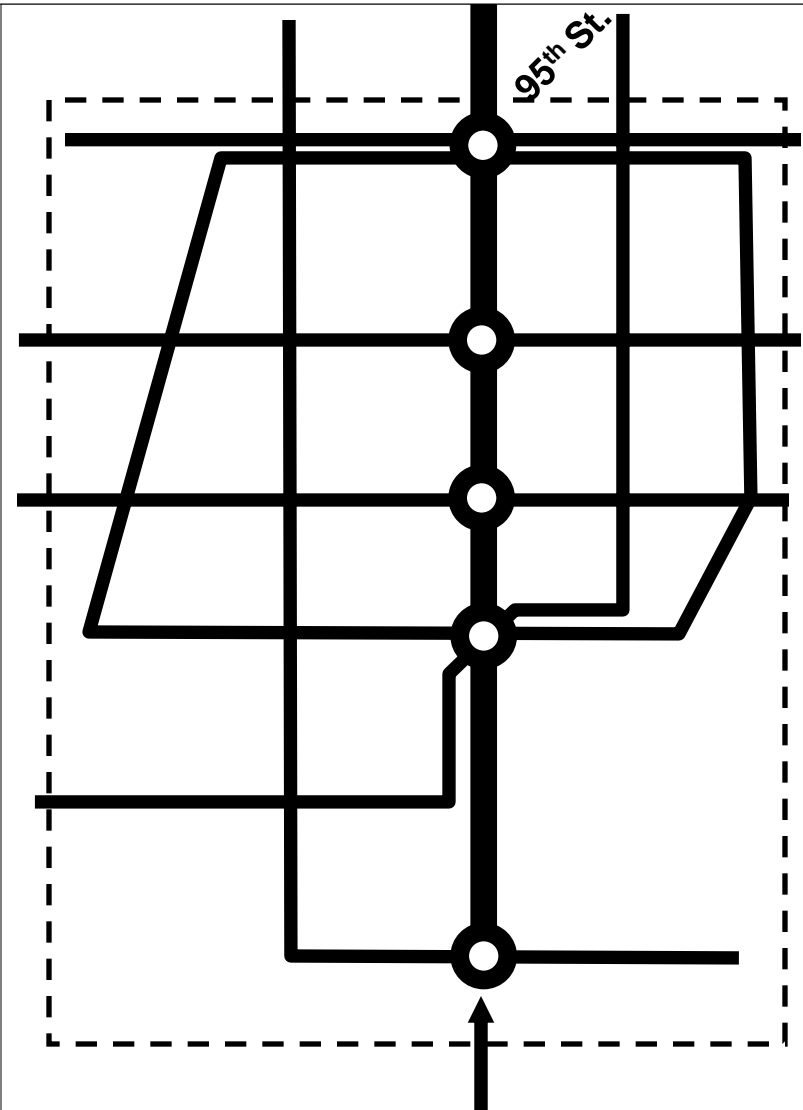


Purpose and Need

- **Significant Bus and Passenger Congestion at 95th Street Red Line Station**
- **Lengthy Bus Trips to Access 95th Street Red Line Station**
- **Far South Area Residents Experience 20% Longer Commute Times than Rest of City**
- **Traffic Congestion is Expected to Grow along with Study Area Population and Employment**

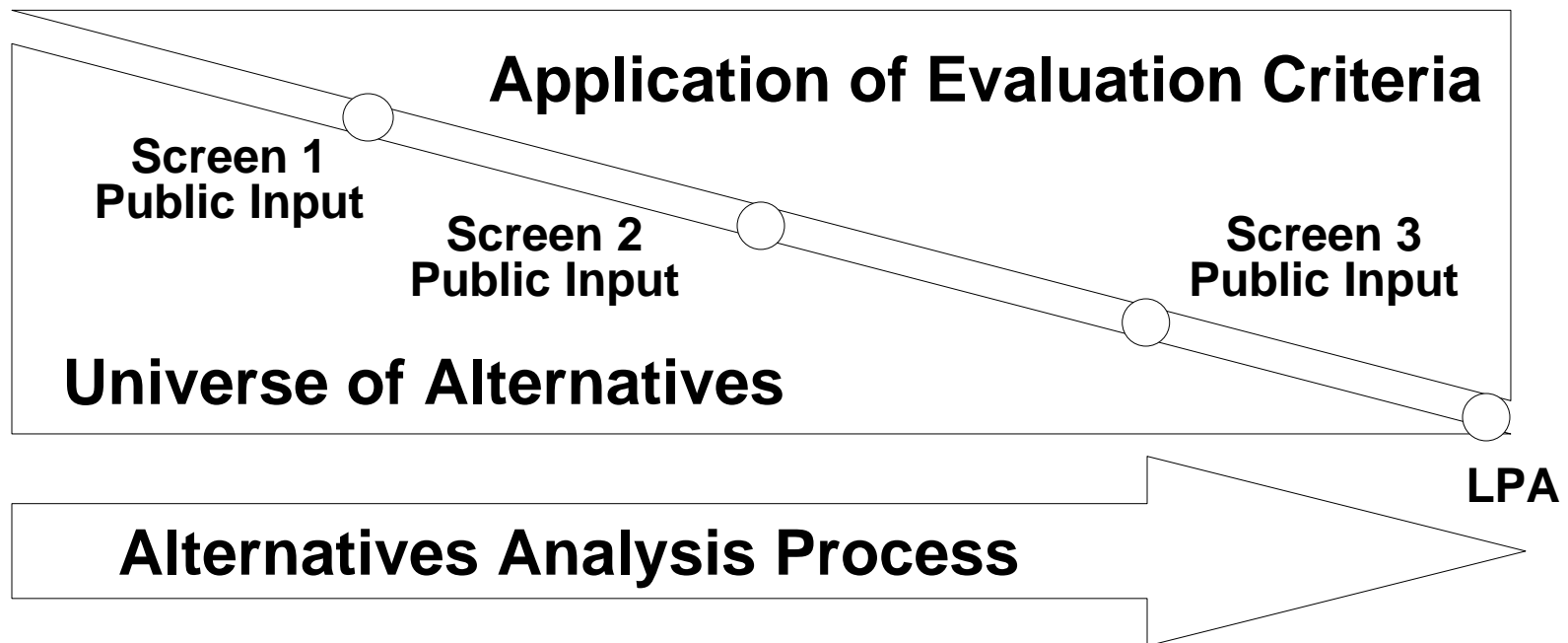
Opportunity for Improvement

- **Extend Rapid Transit Service South From 95th Street Red Line Terminal:**
 - Improve access to, within, and beyond study area
 - Shorten transit travel times through faster and more direct routings
 - Stimulate economic development and job opportunities



FTA Evaluation Process

As the AA study progresses and the evaluation criteria are applied, options within the Universe of Alternatives are eliminated until, at the end of the process, there is a Locally Preferred Alternative (LPA).



Evaluation Process – Screening Detail

- **Screen 1 – Review Universe of Alternatives**
 - Eliminate alternatives based on technology, corridor and profile
 - Advance strongest alternatives to Screen 2

- **Screen 2 – More Detailed Definition and Evaluation**
 - Define alignments, forecast transit ridership, calculate capital costs, identify neighborhood resources along the alignment
 - Evaluate and reduce number of remaining alternatives

- **Screen 3 – Final Definition**
 - Refine remaining alternatives
 - Identify Locally Preferred Alternative

Screen 1 Process

- 1. Define the Universe of Alternatives**
- 2. Evaluate all Potential Technologies**
- 3. Evaluate all Potential Alignments
(Corridors and Profiles)**
- 4. Evaluate all Potential Combinations of
Technological and Alignment Alternatives**
- 5. Advance Strongest Combinations**

Technologies Evaluated

Universe of Alternatives Considered

TECHNOLOGIES

Automated Guideway/Monorail

Bus Rapid Transit

Commuter Bus

Commuter Rail

Heavy Rail Transit

High Speed Rail

Light Rail Transit

Local Bus

MagLev

Personal Rapid Transit

Streetcar



Technologies Reviewed



Automated Guideway/Monorail

Technologies Reviewed



Bus Rapid Transit

Technologies Reviewed



Commuter Bus



Technologies Reviewed



Commuter Rail

Technologies Reviewed



Heavy Rail Transit

Technologies Reviewed



High Speed Rail

Technologies Reviewed



Light Rail Transit

Technologies Reviewed



Local Bus

Technologies Reviewed



MagLev

Technologies Reviewed



Personal Rapid Transit

Technologies Reviewed



Streetcar