



# Historical Calendar

# 2026





**Lake Street Bridge**

Three turn-of-the-century wooden motor cars head east across the Lake Street bridge in 1924.

S	M	T	W	T	F	S
<b>ABCDEF:</b> CTA Operations Division Group Days Off ▼ Alternate day off if you work on this day ● Central offices closed	December 2025 S M T W T F S 1 2 3 4 5 6 7 8 9 10 11 12 13 14 15 16 17 18 19 20 21 22 23 24 25 26 27 28 29 30 31	February 2026 S M T W T F S 1 2 3 4 5 6 7 8 9 10 11 12 13 14 15 16 17 18 19 20 21 22 23 24 25 26 27 28		1	2	3
4	5	6	7	8	9	10
11	12	13	14	15	16	17
18	19	20	21	22	23	24
25	26	27	28	29	30	31



**Pullman Street Car B**

Red streetcar #225, built by Pullman in 1908, is followed by a newer St. Louis Car Company-built PCC Green Hornet streetcar, 4406, as it travels south on State near Washington. Knowing the days of streetcars in Chicago were numbered, rail enthusiasts chartered “Big Pullman” #225 for a day of photography on October 21, 1956.

<b>S</b> <b>1</b>	<b>D</b> <b>M</b> <small>Groundhog Day</small>	<b>E</b> <b>T</b> <b>3</b>	<b>F</b> <b>W</b> <b>4</b>	<b>G</b> <b>T</b> <b>5</b>	<b>A</b> <b>F</b> <b>6</b>	<b>B</b> <b>S</b> <b>7</b>	<b>C</b>
<b>8</b>	<b>9</b>	<b>10</b>	<b>11</b>	<b>12</b>	<b>13</b>	<b>14</b> <small>Valentine's Day</small>	<b>B</b>
<b>15</b>	<b>16</b> <small>Presidents' Day</small>	<b>17</b>	<b>18</b> <small>Ash Wednesday</small>	<b>19</b>	<b>20</b>	<b>21</b>	<b>A</b>
<b>22</b>	<b>23</b>	<b>24</b>	<b>25</b>	<b>26</b>	<b>27</b>	<b>28</b>	<b>G</b>

ABCDEF G:  
 CTA Operations Division  
 Group Days Off  
 ▼ Alternate day off if you work on this day  
 ● Central offices closed

<p>January 2026</p> <table border="1"> <tr><td>S</td><td>M</td><td>T</td><td>W</td><td>T</td><td>F</td><td>S</td></tr> <tr><td></td><td></td><td></td><td>1</td><td>2</td><td>3</td><td></td></tr> <tr><td>4</td><td>5</td><td>6</td><td>7</td><td>8</td><td>9</td><td>10</td></tr> <tr><td>11</td><td>12</td><td>13</td><td>14</td><td>15</td><td>16</td><td>17</td></tr> <tr><td>18</td><td>19</td><td>20</td><td>21</td><td>22</td><td>23</td><td>24</td></tr> <tr><td>25</td><td>26</td><td>27</td><td>28</td><td>29</td><td>30</td><td>31</td></tr> </table>	S	M	T	W	T	F	S				1	2	3		4	5	6	7	8	9	10	11	12	13	14	15	16	17	18	19	20	21	22	23	24	25	26	27	28	29	30	31	<p>March 2026</p> <table border="1"> <tr><td>S</td><td>M</td><td>T</td><td>W</td><td>T</td><td>F</td><td>S</td></tr> <tr><td>1</td><td>2</td><td>3</td><td>4</td><td>5</td><td>6</td><td>7</td></tr> <tr><td>8</td><td>9</td><td>10</td><td>11</td><td>12</td><td>13</td><td>14</td></tr> <tr><td>15</td><td>16</td><td>17</td><td>18</td><td>19</td><td>20</td><td>21</td></tr> <tr><td>22</td><td>23</td><td>24</td><td>25</td><td>26</td><td>27</td><td>28</td></tr> <tr><td>29</td><td>30</td><td>31</td><td></td><td></td><td></td><td></td></tr> </table>	S	M	T	W	T	F	S	1	2	3	4	5	6	7	8	9	10	11	12	13	14	15	16	17	18	19	20	21	22	23	24	25	26	27	28	29	30	31				
S	M	T	W	T	F	S																																																																															
			1	2	3																																																																																
4	5	6	7	8	9	10																																																																															
11	12	13	14	15	16	17																																																																															
18	19	20	21	22	23	24																																																																															
25	26	27	28	29	30	31																																																																															
S	M	T	W	T	F	S																																																																															
1	2	3	4	5	6	7																																																																															
8	9	10	11	12	13	14																																																																															
15	16	17	18	19	20	21																																																																															
22	23	24	25	26	27	28																																																																															
29	30	31																																																																																			



**Damen Green Line Station**

A CTA train arrives at newly constructed Damen Green Line station. This infill station on the Green Line opened in August 2024, but it was not the first time an elevated station existed over the street now named Damen.

S	M	T	W	T	F	S
1	2	3	4	5	6	7
8	9	10	11	12	13	14
15	16	17	18	19	20	21
22	23	24	25	26	27	28
29	30	31				

ABCDEFG:  
 CTA Operations Division  
 Group Days Off  
 ▼ Alternate day off if you  
 work on this day  
 ● Central offices closed

February 2026  
 S M T W T F S  
 1 2 3 4 5 6 7  
 8 9 10 11 12 13 14  
 15 16 17 18 19 20 21  
 22 23 24 25 26 27 28

April 2026  
 S M T W T F S  
 1 2 3 4  
 5 6 7 8 9 10 11  
 12 13 14 15 16 17 18  
 19 20 21 22 23 24 25  
 26 27 28 29 30



**Route #35 at Comiskey Park**

CTA bus 4404, operating on the #35 35th bus route poses for a photo in front of the Comiskey Park in the early 1990s.

S	M	T	W	T	F	S
<b>S</b> <small>ABCDEF: CTA Operations Division Group Days Off</small> <small>▼ Alternate day off if you work on this day</small> <small>● Central offices closed</small>	<b>M</b> <small>March 2026</small> <small>S M T W T F S</small> 1 2 3 4 5 6 7 8 9 10 11 12 13 14 15 16 17 18 19 20 21 22 23 24 25 26 27 28 29 30 31	<b>T</b> <small>May 2026</small> <small>S M T W T F S</small> 1 2 3 4 5 6 7 8 9 10 11 12 13 14 15 16 17 18 19 20 21 22 23 24 25 26 27 28 29 30 31	<b>1</b> <small>Passover begins</small>	<b>2</b>	<b>3</b> <small>Good Friday</small>	<b>4</b>
<b>5</b> <small>Easter Sunday</small>	<b>6</b>	<b>7</b>	<b>8</b>	<b>9</b>	<b>10</b>	<b>11</b>
<b>12</b>	<b>13</b>	<b>14</b>	<b>15</b> <small>Tax Day</small>	<b>16</b>	<b>17</b>	<b>18</b>
<b>19</b>	<b>20</b>	<b>21</b>	<b>22</b> <small>Earth Day Administrative Professionals Day</small>	<b>23</b>	<b>24</b>	<b>25</b>
<b>26</b>	<b>27</b>	<b>28</b>	<b>29</b>	<b>30</b>		



**Route #95 at South Works**

A CTA #95 93rd/95th bus drops off passengers at the U.S. Steel South Works mill at the 89th/Avenue O bus terminal in 1956. Joined by the #87 87th bus, the #95 bus was one of two CTA bus routes—operating at a headway of 5 to 7 minutes—that served the massive steel mill that employed 20,000 workers at the time this photo was taken.

S	M	T	W	T	F	S
<b>ABCDEFG:</b> CTA Operations Division Group Days Off ▼ Alternate day off if you work on this day ● Central offices closed	April 2026 S M T W T F S 1 2 3 4 5 6 7 8 9 10 11 12 13 14 15 16 17 18 19 20 21 22 23 24 25 26 27 28 29 30	June 2026 S M T W T F S 1 2 3 4 5 6 7 8 9 10 11 12 13 14 15 16 17 18 19 20 21 22 23 24 25 26 27 28 29 30			1	2
3	4	5	6	7	8	9
10	11	12	13	14	15	16
17	18	19	20	21	22	23
24	25	26	27	28	29	30
31						



**Congress Dedication Ceremony**

This June 21, 1958 photo shows the dedication ceremony at U-of-I–Halsted (now UIC–Halsted) on the what was originally known as Congress Line in the middle of what was then known as the Congress Expressway (now called I-290 or the “Eisenhower Expressway”).

<b>S</b>	<b>M</b> 1	<b>T</b> 2	<b>W</b> 3	<b>T</b> 4	<b>F</b> 5	<b>S</b> 6
<b>7</b>	<b>8</b>	<b>9</b>	<b>10</b>	<b>11</b>	<b>12</b>	<b>13</b>
<b>14</b> <small>Flag Day</small>	<b>15</b>	<b>16</b>	<b>17</b>	<b>18</b>	<b>19</b> <small>Juneteenth</small>	<b>20</b>
<b>21</b> <small>Father's Day First Day of Summer</small>	<b>22</b>	<b>23</b>	<b>24</b>	<b>25</b>	<b>26</b>	<b>27</b>
<b>28</b>	<b>29</b>	<b>30</b>				

ABCDEFG:  
 CTA Operations Division  
 Group Days Off  
 ▼ Alternate day off if you  
 work on this day  
 ● Central offices closed

May 2026

S	M	T	W	T	F	S
					1	2
3	4	5	6	7	8	9
10	11	12	13	14	15	16
17	18	19	20	21	22	23
24	25	26	27	28	29	30
31						

July 2026

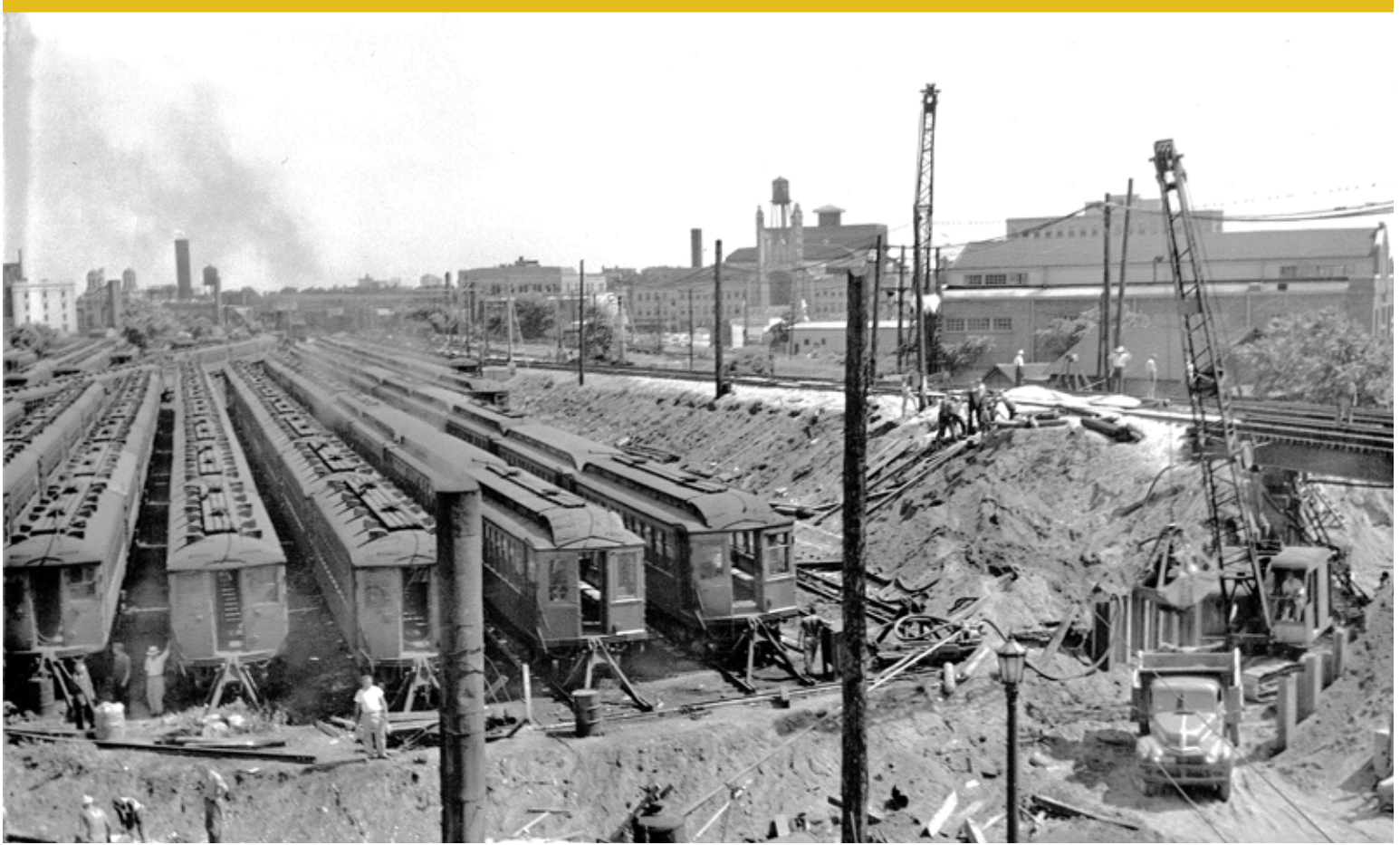
S	M	T	W	T	F	S
				1	2	3
4	5	6	7	8	9	10
11	12	13	14	15	16	17
18	19	20	21	22	23	24
25	26	27	28	29	30	31



**Opening of State Street Bridge**

A southbound Presidents' Conference Committee (PCC) "Green Hornet" streetcar on State Street, one of 600 built by both the St. Louis Car Company and Pullman-Standard Car Manufacturing Company that entered service in 1948, celebrates the opening of the new State Street bridge over the Chicago River in this 1949 view. Streetcar service ended in Chicago nearly seventy years ago, in the early morning hours of June 21, 1958.

S	M	T	W	T	F	S																																																																																											
<b>S</b> <small>ABCDEF: CTA Operations Division Group Days Off</small> <small>▼ Alternate day off if you work on this day</small> <small>● Central offices closed</small>	<small>June 2026</small> <table border="1"> <tr><td>S</td><td>M</td><td>T</td><td>W</td><td>T</td><td>F</td><td>S</td></tr> <tr><td></td><td>1</td><td>2</td><td>3</td><td>4</td><td>5</td><td>6</td></tr> <tr><td>7</td><td>8</td><td>9</td><td>10</td><td>11</td><td>12</td><td>13</td></tr> <tr><td>14</td><td>15</td><td>16</td><td>17</td><td>18</td><td>19</td><td>20</td></tr> <tr><td>21</td><td>22</td><td>23</td><td>24</td><td>25</td><td>26</td><td>27</td></tr> <tr><td>28</td><td>29</td><td>30</td><td></td><td></td><td></td><td></td></tr> </table>	S	M	T	W	T	F	S		1	2	3	4	5	6	7	8	9	10	11	12	13	14	15	16	17	18	19	20	21	22	23	24	25	26	27	28	29	30					<small>August 2026</small> <table border="1"> <tr><td>S</td><td>M</td><td>T</td><td>W</td><td>T</td><td>F</td><td>S</td></tr> <tr><td></td><td></td><td></td><td></td><td></td><td></td><td>1</td></tr> <tr><td>2</td><td>3</td><td>4</td><td>5</td><td>6</td><td>7</td><td>8</td></tr> <tr><td>9</td><td>10</td><td>11</td><td>12</td><td>13</td><td>14</td><td>15</td></tr> <tr><td>16</td><td>17</td><td>18</td><td>19</td><td>20</td><td>21</td><td>22</td></tr> <tr><td>23</td><td>24</td><td>25</td><td>26</td><td>27</td><td>28</td><td>29</td></tr> <tr><td>30</td><td>31</td><td></td><td></td><td></td><td></td><td></td></tr> </table>	S	M	T	W	T	F	S							1	2	3	4	5	6	7	8	9	10	11	12	13	14	15	16	17	18	19	20	21	22	23	24	25	26	27	28	29	30	31						<b>1</b>	<b>2</b>	<b>3</b> <small>Independence Day (observed)</small>	<b>4</b> <small>U.S. 250th Anniversary</small>
S	M	T	W	T	F	S																																																																																											
	1	2	3	4	5	6																																																																																											
7	8	9	10	11	12	13																																																																																											
14	15	16	17	18	19	20																																																																																											
21	22	23	24	25	26	27																																																																																											
28	29	30																																																																																															
S	M	T	W	T	F	S																																																																																											
						1																																																																																											
2	3	4	5	6	7	8																																																																																											
9	10	11	12	13	14	15																																																																																											
16	17	18	19	20	21	22																																																																																											
23	24	25	26	27	28	29																																																																																											
30	31																																																																																																
<b>5</b>	<b>6</b>	<b>7</b>	<b>8</b>	<b>9</b>	<b>10</b>	<b>11</b>																																																																																											
<b>12</b>	<b>13</b>	<b>14</b>	<b>15</b>	<b>16</b>	<b>17</b>	<b>18</b>																																																																																											
<b>19</b>	<b>20</b>	<b>21</b>	<b>22</b>	<b>23</b>	<b>24</b>	<b>25</b>																																																																																											
<b>26</b>	<b>27</b>	<b>28</b>	<b>29</b>	<b>30</b>	<b>31</b>																																																																																												



**Construction at Howard Yard**

In the foreground of this 1949 photo, a stationary boiler generated steam for the construction of a new loop track at the north end of the Howard Yard. The loop replaced a dead end turnback track and allowed trains terminating at Howard to return south without having to change ends or cross busy tracks north of the station.

**S**

**M**

**T**

**W**

**T**

**F**

**S**

F

ABCDEFG:  
CTA Operations Division  
Group Days Off  
▼ Alternate day off if you  
work on this day  
● Central offices closed

July 2026

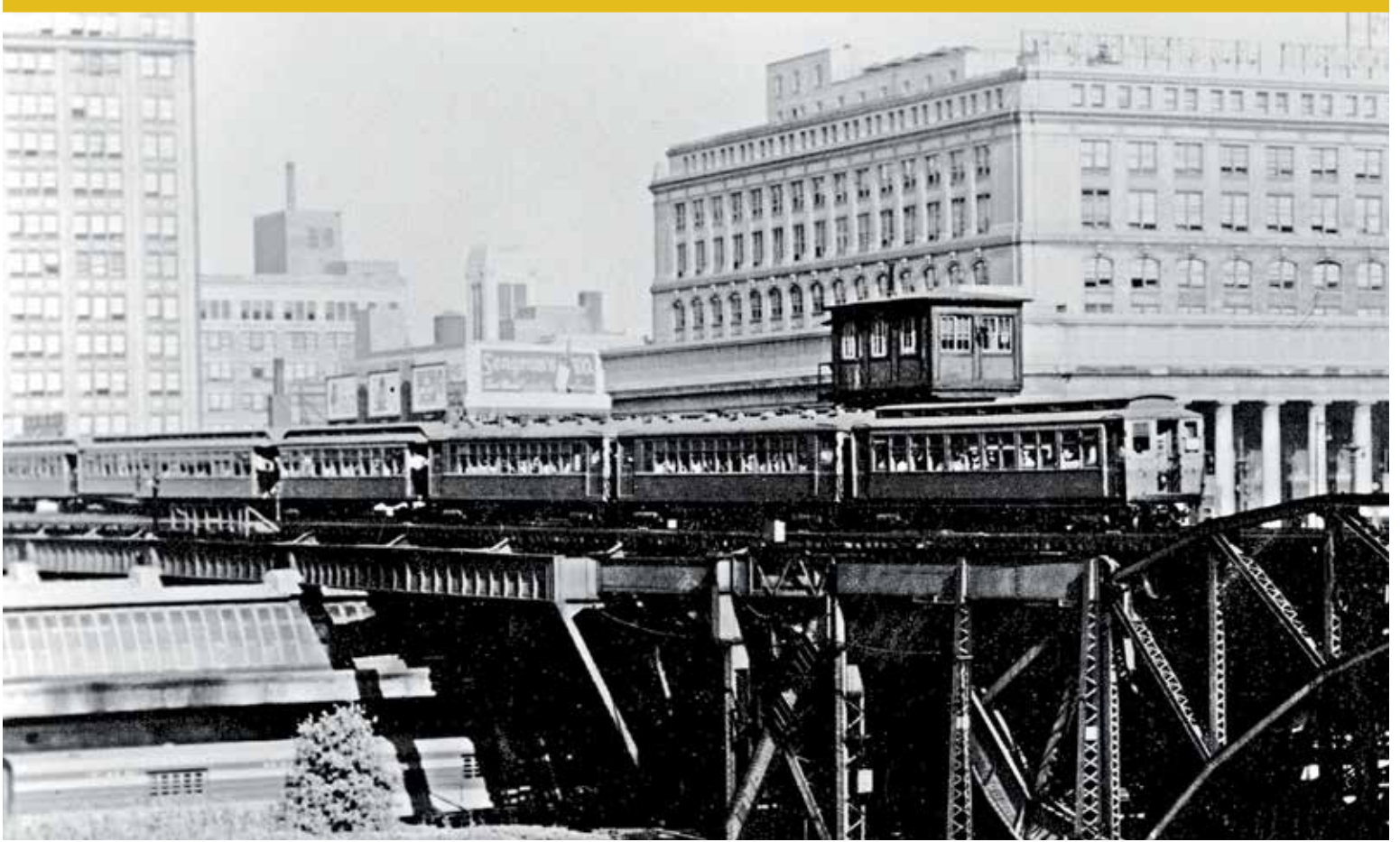
S	M	T	W	T	F	S
		1	2	3	4	
5	6	7	8	9	10	11
12	13	14	15	16	17	18
19	20	21	22	23	24	25
26	27	28	29	30	31	

September 2026

S	M	T	W	T	F	S
		1	2	3	4	5
6	7	8	9	10	11	12
13	14	15	16	17	18	19
20	21	22	23	24	25	26
27	28	29	30			

**1**

	F	G	A	B	C	D	E
<b>2</b>	<b>3</b>	<b>4</b>	<b>5</b>	<b>6</b>	<b>7</b>	<b>8</b>	
<b>9</b>	<b>10</b>	<b>11</b>	<b>12</b>	<b>13</b>	<b>14</b>	<b>15</b>	
<b>16</b>	<b>17</b>	<b>18</b>	<b>19</b>	<b>20</b>	<b>21</b>	<b>22</b>	
<b>23</b>	<b>24</b>	<b>25</b>	<b>26</b>	<b>27</b>	<b>28</b>	<b>29</b>	
<b>30</b>	<b>31</b>						



**Metropolitan 'L' in 1940s**

A five-car train carries morning rush-period riders across the four-track Metropolitan 'L' bridge in this early 1940s view looking northwest toward Union Station. Leading two steel cars and two wooden coaches with open platforms is a 2800-series wooden motorcar built in 1906.

S	M	T	W	T	F	S
<b>1</b> <small>ABCDEF: CTA Operations Division Group Days Off</small> <small>▼ Alternate day off if you work on this day</small> <small>● Central offices closed</small>		<b>1</b>	<b>2</b>	<b>3</b>	<b>4</b>	<b>5</b>
<b>6</b>	<b>7</b> <small>Labor Day</small>	<b>8</b>	<b>9</b>	<b>10</b>	<b>11</b> <small>Rosh Hashanah begins</small>	<b>12</b>
<b>13</b>	<b>14</b>	<b>15</b>	<b>16</b>	<b>17</b>	<b>18</b>	<b>19</b>
<b>20</b>	<b>21</b> <small>Yom Kippur begins</small>	<b>22</b> <small>First Day Of Autumn</small>	<b>23</b>	<b>24</b>	<b>25</b>	<b>26</b>
<b>27</b>	<b>28</b>	<b>29</b>	<b>30</b>	<small>August 2026</small> <small>S M T W T F S</small> <small>1 2 3 4 5 6 7 8</small> <small>9 10 11 12 13 14 15</small> <small>16 17 18 19 20 21 22</small> <small>23 24 25 26 27 28 29</small> <small>30 31</small>		<small>October 2026</small> <small>S M T W T F S</small> <small>1 2 3 4 5 6 7 8 9 10</small> <small>11 12 13 14 15 16 17</small> <small>18 19 20 21 22 23 24</small> <small>25 26 27 28 29 30 31</small>



**Busy Day on State Street**

It's a busy day on State Street! The CTA's large fleet of gas-powered buses are shown grid locked in traffic between the early 1960s and late 1970s shown looking north at State/Monroe. Almost as prominent as the thirteen CTA buses visible in this photo are State Street's distinctive "Space Age" fluorescent streetlamps introduced by Mayor Richard J. Daley, designed to make the street brighter, and maybe even visible from space itself.

**S**

**M**

**T**

**W**

**T**

**F**

**S**

ABCDEFG:  
CTA Operations Division  
Group Days Off  
▼ Alternate day off if you  
work on this day  
● Central offices closed

September 2026  
S M T W T F S  
1 2 3 4 5  
6 7 8 9 10 11 12  
13 14 15 16 17 18 19  
20 21 22 23 24 25 26  
27 28 29 30

November 2026  
S M T W T F S  
1 2 3 4 5 6 7  
8 9 10 11 12 13 14  
15 16 17 18 19 20 21  
22 23 24 25 26 27 28  
29 30

**4**

**5**

**6**

**7**

**8**

**9**

**10**

**11**

**12**

Columbus Day

**13**

**14**

**15**

**16**

**17**

**18**

**19**

**20**

**21**

**22**

**23**

**24**

**25**

**26**

**27**

**28**

**29**

**30**

**31**

Halloween



**Chicago Motor Coach Southbound on Michigan at Chicago**

Chicago Motor Coach route 51 Sheridan boards passengers southbound on Michigan at Chicago in 1924. CMC 1586. After being acquired by the CTA in 1952, much of the routing from the #51 Sheridan became today's CTA route #151 Sheridan.

<b>S</b> <b>1</b> Daylight Saving Time ends	<sup>G</sup> <b>M</b> <b>2</b>	<sup>A</sup> <b>T</b> <b>3</b>	<sup>B</sup> <b>W</b> <b>4</b>	<sup>C</sup> <b>T</b> <b>5</b>	<sup>D</sup> <b>F</b> <b>6</b>	<sup>E</sup> <b>S</b> <b>7</b> <sup>F</sup>
<sup>F</sup> <b>8</b>	<sup>G</sup> <b>9</b>	<sup>A</sup> <b>10</b>	<sup>B</sup> <b>11</b> Veterans Day	<sup>C</sup> <b>12</b>	<sup>D</sup> <b>13</b>	<sup>E</sup> <b>14</b> <sup>F</sup>
<sup>E</sup> <b>15</b>	<sup>F</sup> <b>16</b>	<sup>G</sup> <b>17</b>	<sup>A</sup> <b>18</b>	<sup>B</sup> <b>19</b>	<sup>C</sup> <b>20</b>	<sup>D</sup> <b>21</b> <sup>F</sup>
<sup>D</sup> <b>22</b>	<sup>E</sup> <b>23</b>	<sup>F</sup> <b>24</b>	<sup>G</sup> <b>25</b>	<sup>A</sup> <b>26</b> Thanksgiving Day	<sup>B</sup> <b>27</b>	<sup>C</sup> <b>28</b> <sup>F</sup>
<sup>C</sup> <b>29</b>	<sup>D</sup> <b>30</b>					

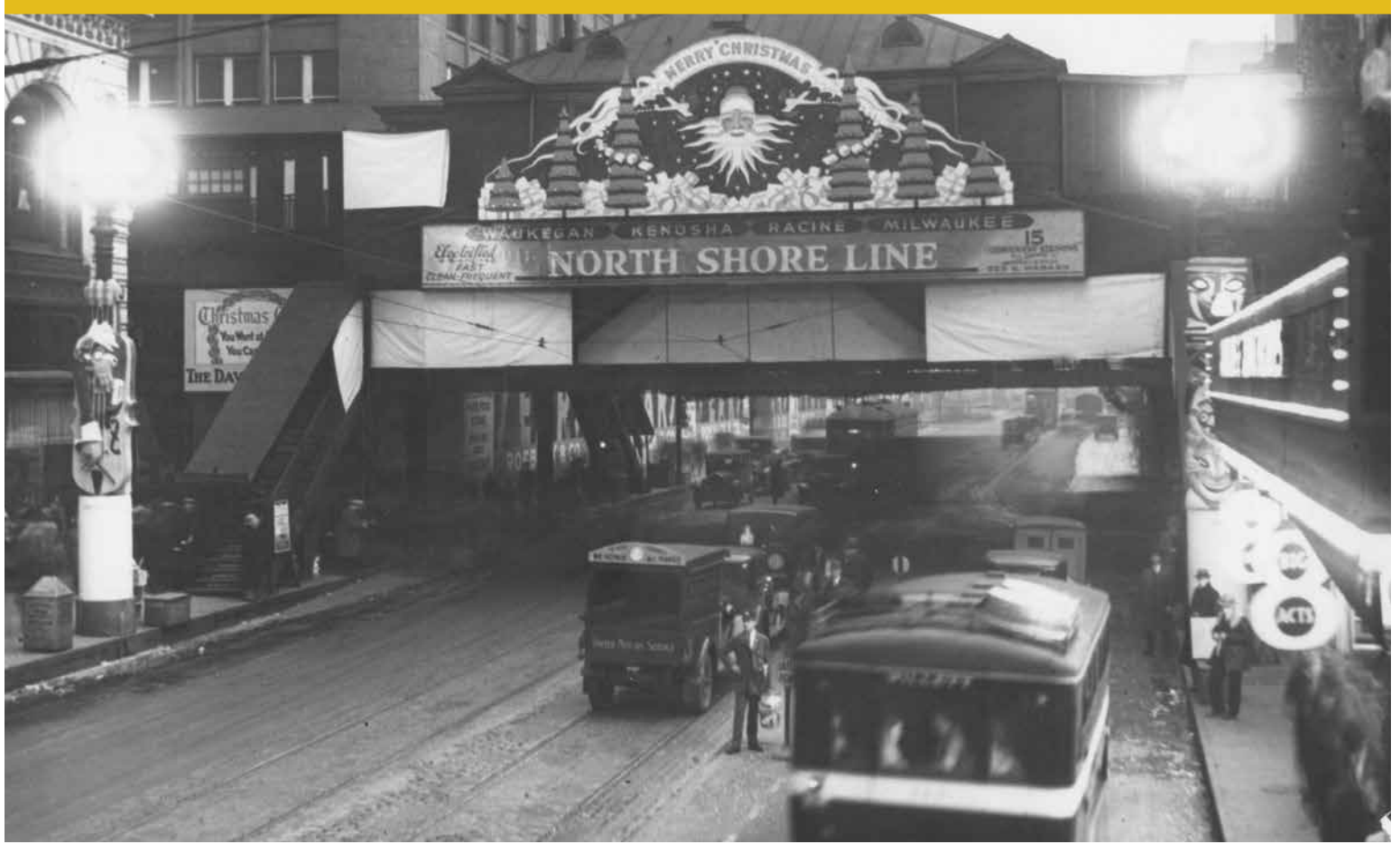
ABCDEFG:  
 CTA Operations Division  
 Group Days Off  
 ▼ Alternate day off if you  
 work on this day  
 ● Central offices closed

October 2026

S	M	T	W	T	F	S
			1	2	3	
4	5	6	7	8	9	10
11	12	13	14	15	16	17
18	19	20	21	22	23	24
25	26	27	28	29	30	31

December 2026

S	M	T	W	T	F	S
			1	2	3	4
5	6	7	8	9	10	11
12	13	14	15	16	17	18
19	20	21	22	23	24	25
26	27	28	29	30	31	



**Merry Christmas at State/Van Buren**

The Chicago Rapid Transit Company decorates the State/Van Buren Elevated station in 1932. During this time, from 1919 to 1963, the station was also a stop for the North Shore Line – as seen in the advertisement under the “Merry Christmas” sign.

S	M	T	W	T	F	S
<b>S</b> <small>ABCDEFG:                      CTA Operations Division                      Group Days Off                      ▼ Alternate day off if you                      work on this day                      ● Central offices closed</small>		<b>1</b>	<b>2</b>	<b>3</b>	<b>4</b>	<b>5</b>
<b>6</b>	<b>7</b>	<b>8</b>	<b>9</b>	<b>10</b>	<b>11</b>	<b>12</b>
<b>13</b>	<b>14</b>	<b>15</b>	<b>16</b>	<b>17</b>	<b>18</b>	<b>19</b>
<b>20</b>	<b>21</b>	<b>22</b>	<b>23</b>	<b>24</b>	<b>25</b>	<b>26</b>
<b>27</b>	<b>28</b>	<b>29</b>	<b>30</b>	<b>31</b>		

Hanukkah begins  
First Day of Winter  
Christmas Eve  
Christmas Day  
Kwanzaa begins  
New Year's Eve

November 2026							January 2027						
S	M	T	W	T	F	S	S	M	T	W	T	F	S
1	2	3	4	5	6	7	3	4	5	6	7	8	9
8	9	10	11	12	13	14	10	11	12	13	14	15	16
15	16	17	18	19	20	21	17	18	19	20	21	22	23
22	23	24	25	26	27	28	24	25	26	27	28	29	30
29	30						31						

# Historical notes

## January: Lake Street Bridge



Three turn-of-the-century wooden motor cars head east across the Lake Street bridge in 1924.

Built in 1916, the Lake Street bascule bridge is double-decked, with the lower deck carrying road traffic and pedestrians and the upper deck carrying the Lake Street Elevated known today as CTA's Green Line and Pink Lines—to and from the Loop. The architecture of the bridge remains the same over a century later. The Chicago Department of Transportation is currently rehabbing the bridge. Construction is expected to be completed in January 2028.

There have been a few different buildings in the background of this photo. The Merchandise Mart, on the right, opened in 1930 and became the World's Largest Building at the time. There are now four buildings on the block of West Wolf Point Plaza, the tallest being Salesforce Tower. The building at right is the Great Lakes Building at 180 N Wacker and is still present. The building at left is no longer present but became the site of the recently constructed 150 N Riverside building.

## February: Pullman Street Car B



Red streetcar #225, built by Pullman in 1908, is followed by a newer St. Louis Car Company-built PCC Green Hornet streetcar, 4406, as it travels south on State near Washington. Knowing the days of streetcars in Chicago were numbered, rail enthusiasts chartered "Big Pullman" #225 for a day of photography on October 21, 1956. Operated with a crew of two, passengers would board at the rear and pay their fares to the conductor. Upon leaving, passengers would exit the streetcar via the front platform and door. The interiors featured wood paneling, heaters under each seat, and cushioned rattan seats. The last of the "Red Rocket" streetcars, as they were also affectionately known by the public, ran in service until May 30, 1954. Car #225 is currently preserved at the Seashore Trolley Museum in Kennebunkport, Maine.

State Street has gone through several periods of change since this photograph was taken. The building in the background on the left in the photo was the flagship store of Marshall Field & Company and is now home to Macy's. The building to the right has long been demolished and a Gap store is currently on the site. Chas. A Stevens, a venerable women's clothing store, is long gone. The traditional globed street lights were replaced in the 1960's by "futuristic"-looking light fixtures in an effort to modernize the street; in 1979, in an effort to revitalize State Street, a nine-block stretch was turned into a pedestrian mall, and all motor traffic was prohibited with the exception of buses. This experiment turned out to be a failure and, in 1996, work was begun to restore State Street to a regular street, complete with replicas of the vintage lights that had illuminated the street for so many generations.

This restoration has met with marked success, as it has brought back vibrancy and life to the street.

## March: Damen Green Line Station



A CTA train arrives at newly constructed Damen Green Line station. This infill station on the Green Line opened in August 2024, but it was not the first time an elevated station existed over the street now named Damen.

The Lake Street Elevated Railroad had a station at Robey built in historic Queen Anne Architecture-style — similar to Ashland and Conservatory-Central Park (previously Homan) and Pulaski — and it was in service from 1893 to 1948. Robey Street was renamed Damen in 1927 for Father Arnold Damen, a Jesuit priest who founded Holy Family Church and St. Ignatius College Prep. In 1948, the CTA closed the original Damen station alongside nine others on the Lake Street Elevated line due to low ridership and in order to speed up service along the line.

The rebuilt Damen station filled a gap between the California and Ashland. The Damen station provides much-needed transit access for the growing communities in Westhaven Park and people working near the Kinzie Industrial Corridor or attending games and concerts at the United Center. The public artwork featured in the station is a two-dimensional collage rendered as a monumental mosaic created by interdisciplinary artist/designer, Fo (Folayemi) Wilson.

# Historical notes

## April: Route #35 at Comiskey Park



CTA bus 4404, operating on the #35 35th bus route poses for a photo in front of the Comiskey Park in the early 1990s.

Bus 4404 is part of a 961-bus order from Transportation Manufacturing Corporation model RTS-08. The series was the first order of buses to be lift-equipped, allowing the buses to serve passengers with wheelchairs. It also was the first order of buses to include the new red, white and blue paint scheme that was introduced on the CTA's rail fleet in 1987.

The original Comiskey Park, home of the Chicago White Sox, was built in 1910 by owner Charles Comiskey, opening as "White Sox Park." It became known as the "Baseball Palace of the World." Comiskey Park was demolished in 1991 and its replacement, "New Comiskey Park" became the new home of the White Sox directly across the street. The stadium's name has changed several times since construction and is now named Rate Field.

## May: Route #95 at South Works



A CTA #95 93rd/95th bus drops off passengers at the U.S. Steel South Works mill at the 89th/Avenue O bus terminal in 1956. Joined by the #87 87th bus, the #95 bus was one of two CTA bus routes—operating at a headway of 5 to 7 minutes—that served the massive steel mill that employed 20,000 workers at the time this photo was taken.

As Chicago grew to be known as the railroad capital of the world at the turn of the 20th century, steel mills like South Works thrived. When this photo was taken, following World War II, the Lake Michigan shoreline was producing 20 percent of the U.S. steel production, which was being used by half of the world.

According to the Chicago Historical Society, "U.S. Steel and other American steel companies (circa 1970s and 80s) that still depended upon large numbers of older, inefficient plants failed to withstand the combination of a decline in demand and the rise of international competition." When the plant closed in 1992, fewer than 700 employees remained, leaving the site largely vacant. For decades, South Works stood as a symbol of Chicago's industrial decline.

In October 2025, Quantum Shore Chicago broke ground on a massive redevelopment on the 440-acre plot of land. The initial phase will include the construction of the Illinois Quantum & Microelectronics Park.

## June: Congress Dedication Ceremony



This June 21, 1958 photo shows the dedication ceremony at U-of-I-Halsted (now UIC-Halsted) on the what was originally known as Congress Line in the middle of what was then known as the Congress Expressway (now called I-290 or the "Eisenhower Expressway").

This line replaced the Garfield Park branch of the system, an elevated with structure and stations much like the elevated that runs through Wicker Park (built by the same company and at the same time), with a fast, modern rapid transit line designed to get people between downtown and west side and near-west suburbs faster than ever before. In this picture, you can see a train in service on the old elevated in the background, which led to the southwest corner of the Loop up until this line opened and west side trains were routed into the subway.

It would be the first expressway-median rapid transit line in the world and connect directly with the Milwaukee-Dearborn subway (then just 7 years old) for service straight through downtown and up to Logan Square.

The area is undergoing a major renovation as part of the Forest Park branch rebuild. An elevator was added at the Blue Line station and a substation is under construction at Morgan, where the ceremony is taking place in this photo.

## July: Opening of State Street Bridge



A southbound Presidents' Conference Committee (PCC) "Green Hornet" streetcar on State Street, one of 600 built by both the St. Louis Car Company and Pullman-Standard Car Manufacturing Company that entered service in 1948, celebrates the opening of the new State Street bridge over the Chicago River in this 1949 view. Streetcar service ended in Chicago nearly seventy years ago, in the early morning hours of June 21, 1958.

# Historical notes

---

## August: Construction at Howard Yard



In the foreground of this 1949 photo, a stationary boiler generated steam for the construction of a new loop track at the north end of the Howard Yard. The loop replaced a dead end turnback track and allowed trains terminating at Howard to return south without having to change ends or cross busy tracks north of the station. The loop passed under tracks on the right that carried through trains from Wilmette to downtown as well as Evanston shuttles and North Shore Line trains to Waukegan. The rows of wooden cars on the right could have been used for anything but Howard-Jackson Park or Englewood service, which required 4000-series steel cars like those on the left for operation through the state Street Subway.

## September: Metropolitan 'L' in 1940s



A five-car train carries morning rush-period riders across the four-track Metropolitan 'L' bridge in this early 1940s view looking northwest toward Union Station. Leading two steel cars and two wooden coaches with open platforms is a 2800-series wooden motorcar built in 1906.

## October: Busy Day on State Street



It's a busy day on State Street! The CTA's large fleet of gas-powered buses are shown grid locked in traffic between the early 1960s and late 1970s shown looking north at State/Monroe. Almost as prominent as the thirteen CTA buses visible in this photo are State Street's distinctive "Space Age" fluorescent streetlamps introduced by Mayor Richard J. Daley, designed to make the street brighter, and maybe even visible from space itself.

## November: Chicago Motor Coach Southbound on Michigan at Chicago



Chicago Motor Coach route 51 Sheridan boards passengers southbound on Michigan at Chicago in 1924. CMC 1586. After being acquired by the CTA in 1952, much of the routing from the #51 Sheridan became today's CTA route #151 Sheridan.

## December: Merry Christmas at State/Van Buren



The Chicago Rapid Transit Company decorates the State/Van Buren Elevated station in 1932. During this time, from 1919 to 1963, the station was also a stop for the North Shore Line – as seen in the advertisement under the "Merry Christmas" sign.

The North Shore Line was an interurban railroad that operated passenger and freight service over an 89-mile route between the Loop and downtown Milwaukee, as well as a branch between the villages of Lake Bluff and Mundelein, Illinois. Extensively modernized by Chicago public utility giant Samuel Insull, the North Shore Line was regarded for its high operating speeds, large track network, and innovative in railcar design.

Today, CTA's Yellow Line operates over a short segment of the North Shore Line's former right-of-way. The former Dempster Street station, now in the parking lot of the Dempster-Skokie Yellow Line station complex has been relocated slightly away from the tracks and preserved, but converted to retail use. It is listed on the National Register of Historic Places.