



PLANS TO DEVELOP
UNDER-L
COMMUNITY
AREAS

**BETWEEN W. LAWRENCE
AND W. ARDMORE AVENUES**

F E B R U A R Y 2 5 - 2 6 , 2 0 2 5



RED AND PURPLE MODERNIZATION (RPM) PHASE ONE PROJECT

RED-PURPLE BYPASS

A rail bypass and track realignment to increase speed, reliability, and capacity

LAWRENCE TO BRYN MAWR MODERNIZATION

Reconstruction of six miles of track structure and four Red Line stations, including making them ADA accessible

CORRIDOR SIGNAL IMPROVEMENT

Signal improvement covering 23 miles of track, improving service reliability



**WE'RE ALMOST
DONE!**

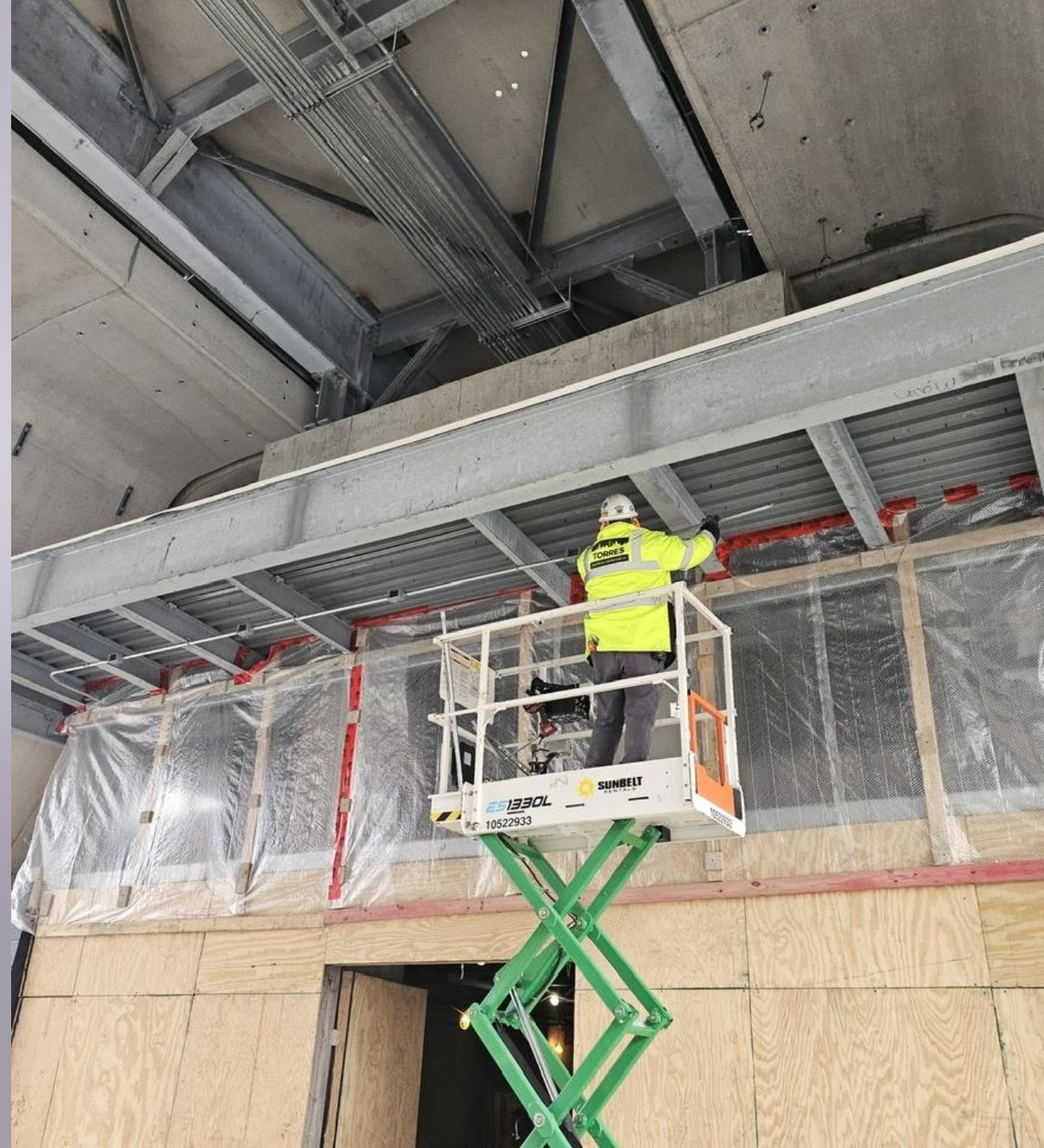
STATIONS TO OPEN
IN SUMMER 2025!

RPM PROJECT UPDATE

Current activities include:

- Completing stationhouses and new northbound Red and Purple line track structure (southbound completed in 2023)
- Completion of new signal work to improve service reliability

Stations opening date to be announced in the spring





CTA EMBANKMENT WALL, 2023



TODAY

ACTIVATING NEW COMMUNITY SPACES UNDER THE 'L'

UNDER-L PUBLIC ENGAGEMENT: SNAPSHOT



JANUARY 2024

1ST PUBLIC MEETINGS

Ideation phase:
What's possible?
We asked the community
what they wanted to see.



MAY 2024

2ND PUBLIC MEETINGS

Concept
development phase:
Block by block
ideas presented
to public



[WE ARE HERE!]

FEBRUARY 2025

FINAL PUBLIC MEETINGS 2/25 - 2/26

Framework
plan phase:
Presentations of final
block concepts and
construction plan



2026 - 2027

Build Phase

LAWRENCE TO ARDMORE UNDER-L ACTIVATION:

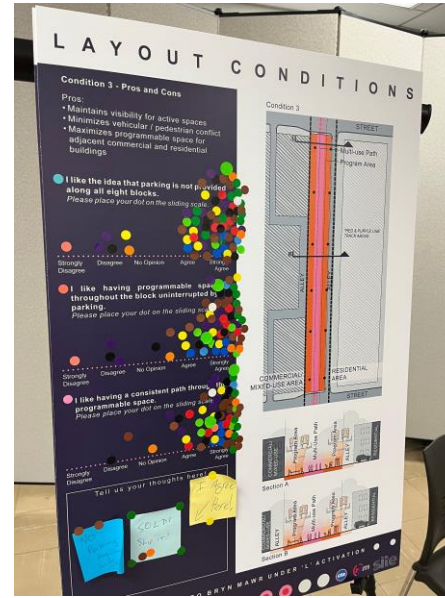
COMMUNITY MEETINGS SERIES #1

JAN. 10-11, 2024

Meeting purpose:

What does the community want to see?

- CTA asked residents, businesses and customers for ideas and input for each of 10 blocks.
- CTA provided examples of possibilities for the under-L space to ignite creativity and discussion from the community.



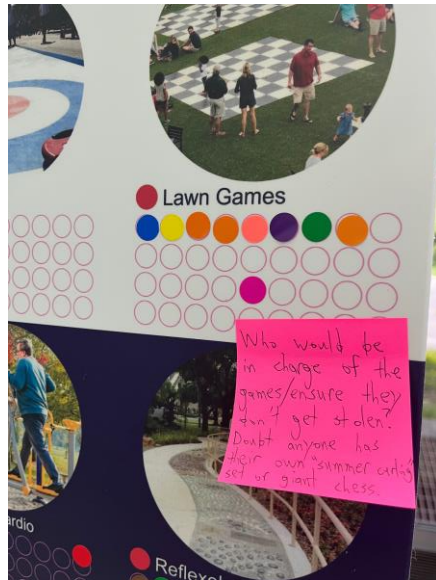
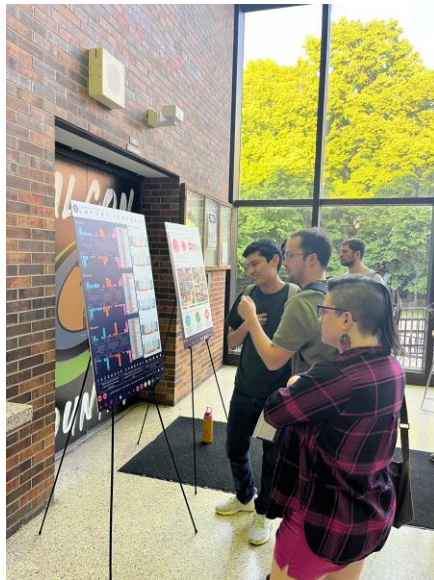
WHAT WE HEARD

- Flexible open spaces for community events like farmers' markets
- Accessible pedestrian trail throughout corridor
- Dog-friendly areas
- Children's play areas
- Parking in select blocks
- Benches
- Green space where light and rain permits
- Fitness areas



HOLLYWOOD TO BRYN MAWR, CONCEPTUAL BLOCK RENDERING FROM MAY 2024 MEETINGS





LAWRENCE TO ARDMORE UNDER-L ACTIVATION:

COMMUNITY MEETINGS SERIES #2

MAY 22-23, 2024

Meeting purpose:

Here's what we heard from the community

- CTA and Site Design presented block-by-block visions for each of 10 blocks based on community feedback.
- We asked the community what features they would like to see on those blocks.



19 DESIGN ELEMENTS WHAT KIND OF IDENTITY DO YOU WANT TO SEE?

5/22/2024

Using a post-it note, write what elements within your community you would like to highlight within the proposed plan.

Examples include:

- inspiration for patterns
- destinations for wayfinding

Local Art

Asia on Argyle

Artwork honors neighborhood history



Pavement Pattern

Color selection grid with 10 circles, 1 of which is filled red.



Wayfinding

Color selection grid with 10 circles, 1 of which is filled red.



Signature Colors

Color selection grid with 10 circles, 1 of which is filled red.



Murals

Color selection grid with 10 circles, 1 of which is filled red.



Reused Asia on Argyle Letters

Color selection grid with 10 circles, 1 of which is filled red.



Information Kiosks

Color selection grid with 10 circles, 1 of which is filled red.



Light Patterns

Color selection grid with 10 circles, 1 of which is filled red.



Structure Color Washing

Color selection grid with 10 circles, 1 of which is filled red.



Feature Light Poles

Color selection grid with 10 circles, 1 of which is filled red.



Surface Wayfinding

Color selection grid with 10 circles, 1 of which is filled red.



Educational Plaques

Color selection grid with 10 circles, 1 of which is filled red.



Sculpture / Art

Color selection grid with 10 circles, 1 of which is filled red.

WHAT WE HEARD

- Desire for more flexible spaces to allow the community to determine use for those spaces over time
- Keep pedestrian trail on every block
- Support for fitness, play areas
- Limit parking to west alley side



TONIGHT'S PURPOSE AND TAKEAWAYS



See the final
**BLOCK-BY-BLOCK
CONCEPTS**



Programming is
**COMMUNITY-
DRIVEN**



CTA maintenance and service
**REQUIREMENT
AND CONSTRAINTS**



Concepts going into
**DESIGN
DEVELOPMENT
SOON**



THANK YOU!

