



RED AHEAD
Moving Ahead to a Better Red



Red and Purple Modernization (RPM) Phase One

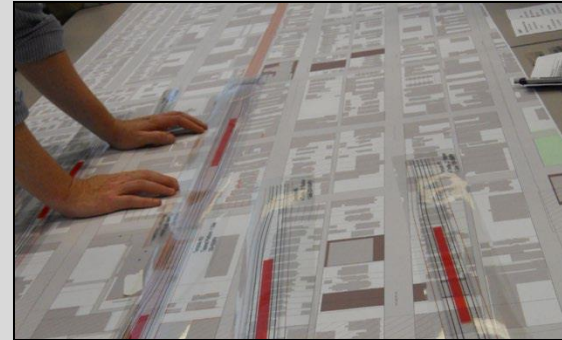
Lakeview 2018 Public Update



Chicago Transit Authority



RPM program history



2009-2010

2011

2012-2013

2014-2015

2016-2017

2018

2019-2025

Vision Study

Environmental Outreach

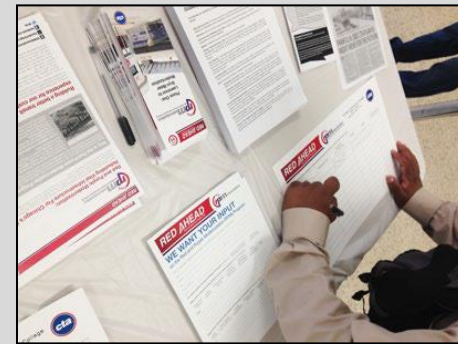
Alternatives Refinement

Phase One Environmental Hearings

Engineering and Funding

Procurement, Demolition, and Utilities

Construction





RED-PURPLE BYPASS AREA: Upcoming 2018 Early Work





Upcoming: Building Demolition

- Some property demolition is necessary to build Bypass and for construction staging
- Demolition of first **10 buildings** starts February/March 2018
 - First Wilton properties (1-5)
 - Next Clark properties (9-11 & 13)
- Remaining **4 buildings** to be demolished in fall 2018 (after Cubs season; 8, 14, 15 & 16)
- Remaining sites in **blue** and **yellow** represent sites with no buildings and partial demo or a building being moved to an adjacent site, respectively.





Demolition: What you to need to know

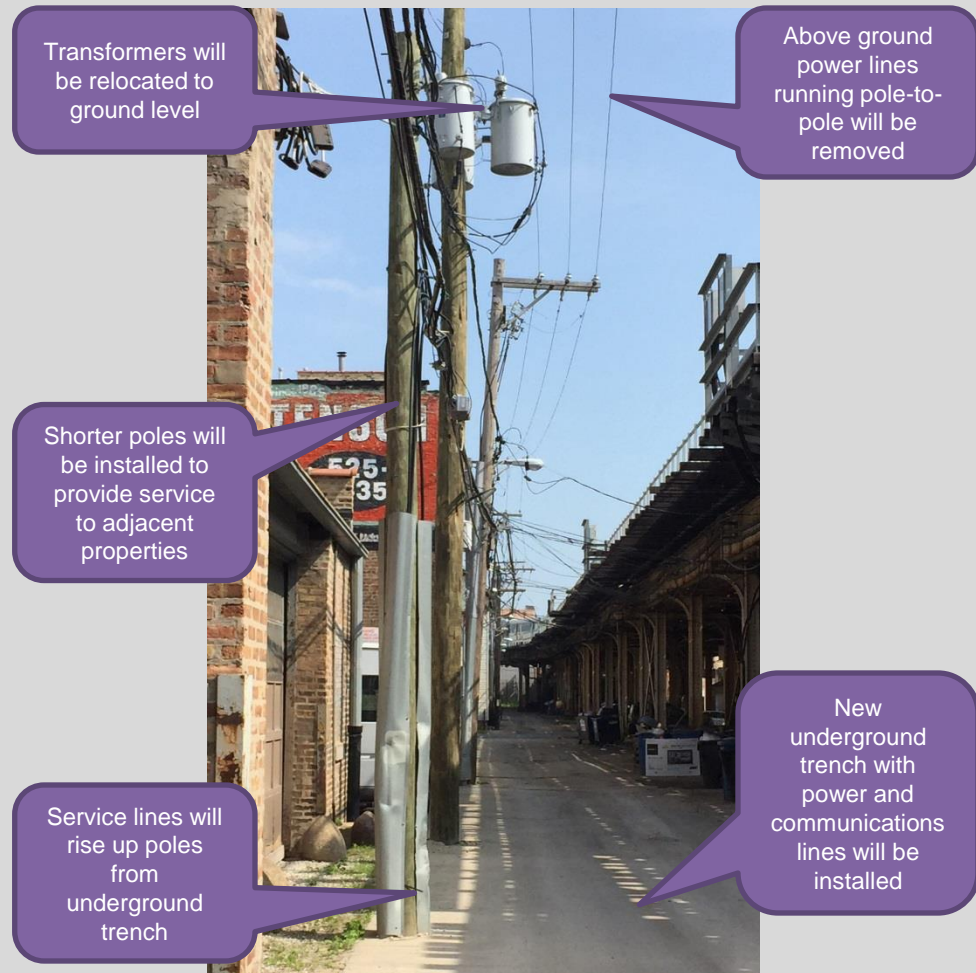
- **Impacts:** Construction equipment, noise, dust, temporary street/alley/sidewalk closures, temporary construction fencing anticipated. Hours of work limited to between 8 AM and 8 PM.
- Demolition contractor will perform dust mitigation and debris removal
- Demolition contractor will implement robust pest abatement program
- Contractor will clear, level with stone, and ornamentally fence sites
- CTA has retained East Lake Management as property manager to maintain these properties, including garbage removal, security, additional pest abatement and snow removal
- Contact information:
 - RPM@transitchicago.com
 - CTA Government and Community Relations, Jeff Wilson, 312.681.2712



EAST LAKE
MANAGEMENT GROUP, INC.

Upcoming: Advance Utility Relocation

- Extensive advance utility relocation is required prior to starting major construction
 - Many utilities in adjacent alleys are relocating underground and rising up shorter service poles (removing many of the wires)
- Includes coordination with electric, gas, water, sewer and telecommunications utilities
- Temporary alley and street closures will occasionally be necessary
- Utility providers will minimize service interruptions and will provide advance notice to the community

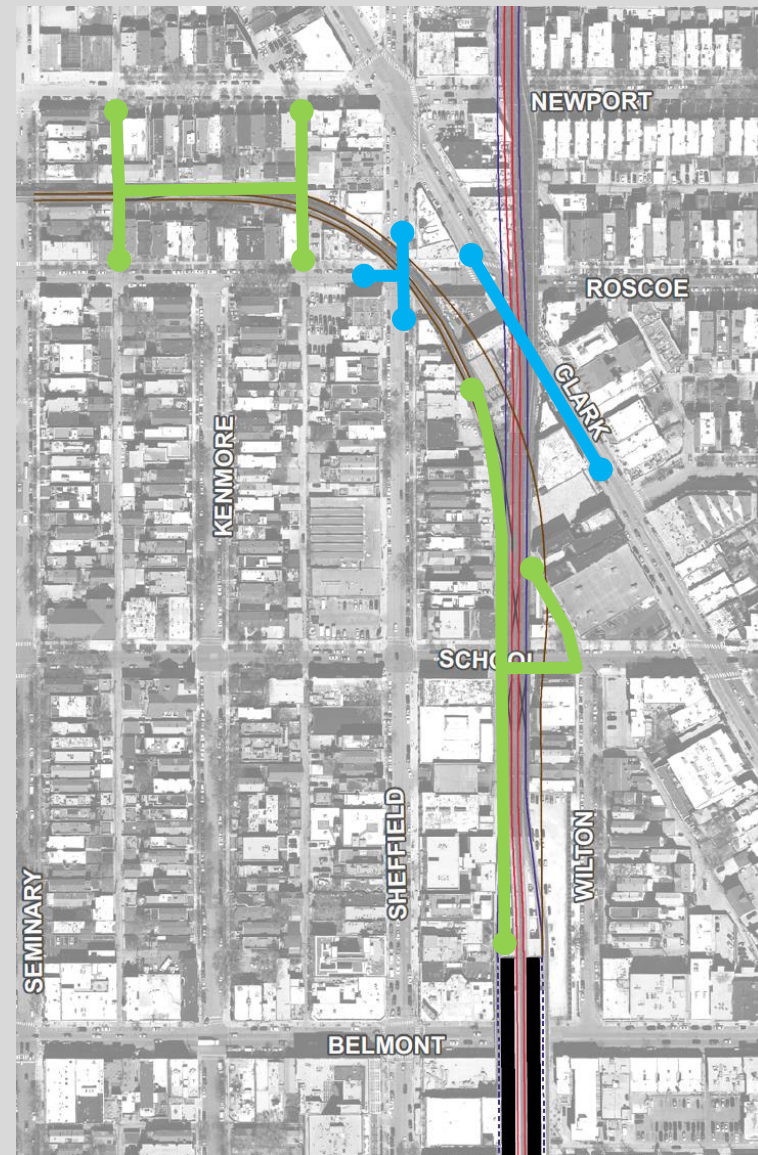


Upcoming: Advance Utility Relocation Work

Starting March 2018

- **Alley trenching** to relocate overhead power and communications lines underground
 - Partial alley closures, noise, vibration, heavy equipment
 - First work will be in the alley serving Sheffield between Belmont and Roscoe
 - 2nd will be in the alley serving Roscoe and Newport between Sheffield and Seminary
- **Street trenching** to relocate underground facilities (gas, electric, water, communications)
 - Street re-routes, partial closures, noise, vibration, heavy equipment
 - Intersection of Roscoe and Sheffield
 - Clark street near Roscoe intersection

Advance Utility relocation complete by Summer 2019





RED-PURPLE BYPASS AREA: Next Steps in Construction





Construction timeline: 2018 and beyond

Current	Procurement for Design-Build Contractor
February/March	Advance utility relocation work begins Demolition of properties in Bypass Area begins
Second half 2018	CTA opens RPM Community Outreach Storefront
December 2018	Property demolition complete
December 2018	CTA selects design-build contractor
Summer 2019	Advance utility relocation complete
Late 2019	Major construction begins
2025	Construction estimated to be completed



Extensive community outreach planned

- Dedicated project outreach team
- Regular public meetings before/throughout the project
- RPM Community Outreach Storefront to open to support the community, provide convenient place to ask questions, and more
- Regular meetings with elected officials and community groups
- Work Zone, Open for Business and Good Neighbor efforts to help affected residents and businesses
- Project signage
- Project hotline
- Dedicated website, e-blasts, social media updates
- Construction activity notices (CANs)

Construction Activity Notice

To increase capacity on the Red Line, work will be performed that may affect your community. While progress sometimes comes with inconveniences, we will do our best to keep them to a minimum.

Dates: 01/15/20xx

Work Hours: xx a.m. to xx p.m., each day

Work Activity: Construction of New Rail Bridge across XX street

Impact to Residents:

- XX Street will be closed in both directions from XX Avenue to XX Avenue and will operate one-way traffic from XX Avenue to XX Street.





CTA Needs You!

- We strongly encourage your feedback
- www.transitchicago.com/RPMproject
- Email us at RPM@transitchicago.com
- Jeff Wilson, CTA Government and Community Relations, 312.681.2712
- We are here for you!