

# Building New Red and Purple Line Tracks

North Belmont Red-Purple Reconstruction (2022-2025)

Virtual Town Hall  
January 5, 2022



# RPM Phase One: Overview

Lawrence to Bryn Mawr Modernization

Red-Purple Bypass

Corridor Signal Improvements







# Red-Purple Bypass

Image taken by Moses Polonio



# Construction Timeline

2019 — 2020 — 2021 — 2022 — 2023 — 2024 — 2025

Build  
Red-Purple Bypass

Rebuild  
Southbound Tracks

Rebuild  
Northbound Tracks

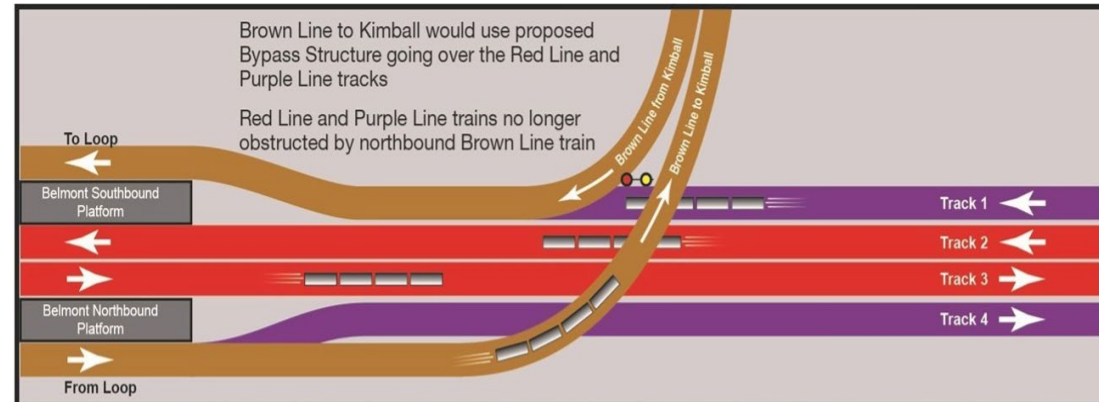
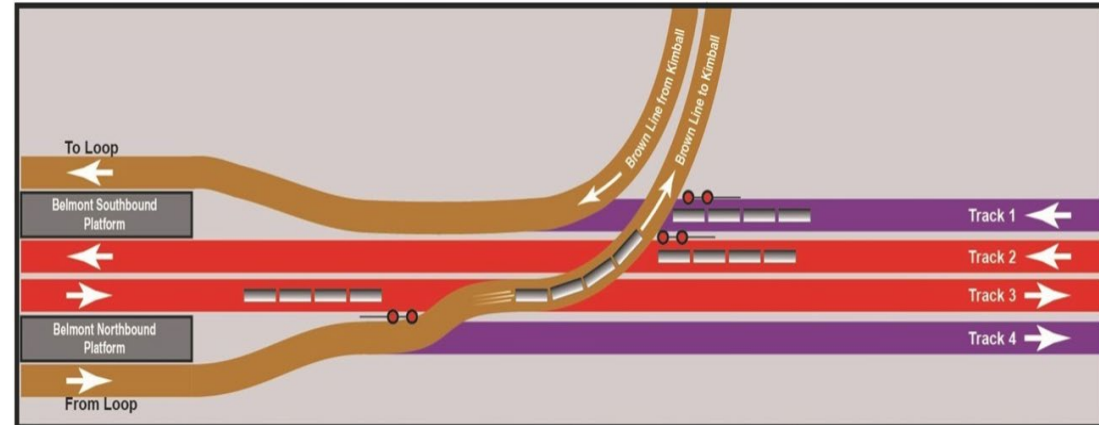
Brown Line  
Structural Upgrades

# Red-Purple Bypass:

## More service capacity and more reliable service

**Before:** 114-year-old Clark Junction required trains to stop and wait, contributing to system -wide capacity limits and slower service

**Today:** New rail bypass allows Kimball-bound trains to travel over Red and Purple tracks, increasing train capacity throughout and improving service system -wide











# Upgrading Brown Line tracks

- Strengthening foundations and replacing equipment to extend the life of the Brown Line tracks
- Lead abatement and repainting performed
- Completed ~25% of this work
- Work will begin again in spring 2022



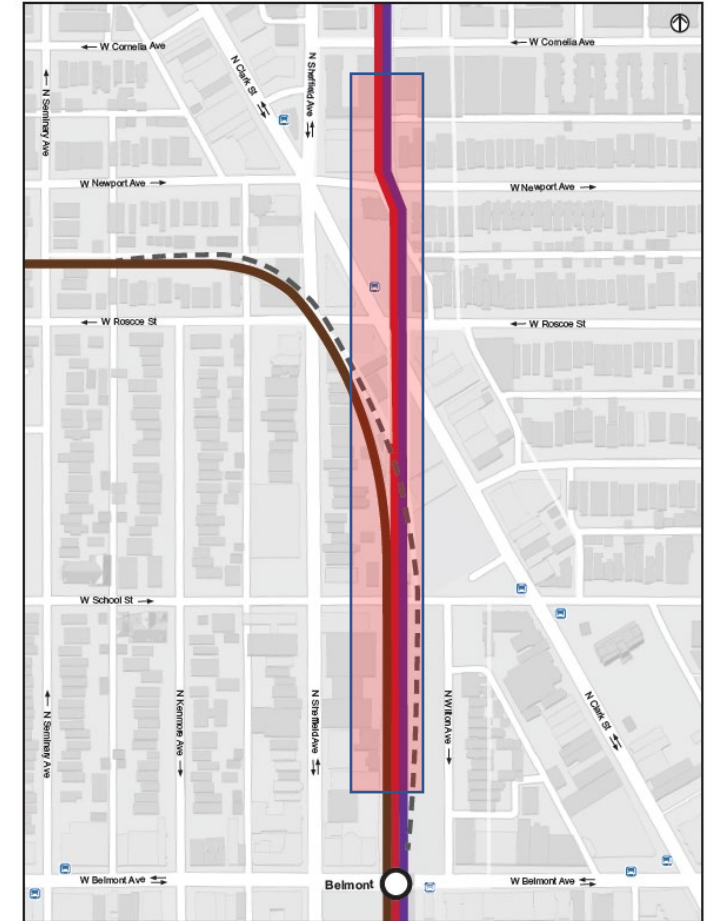


# North Belmont Red-Purple Reconstruction



# What is it? Why is it needed?

- Completely reconstructing 100 -year-old tracks and structure between W Belmont and W Cornelia
- Includes removing the track curve at W Newport that forces trains to slow down
- New track structure will allow trains to move quicker, more smoothly, and with less noise
- New closed deck structure and noise walls will reduce train noise for residents and pedestrians
- Along with the bypass, allow for more train capacity – less crowding during rush periods

















# Preparation Work

North Belmont Red-Purple Reconstruction







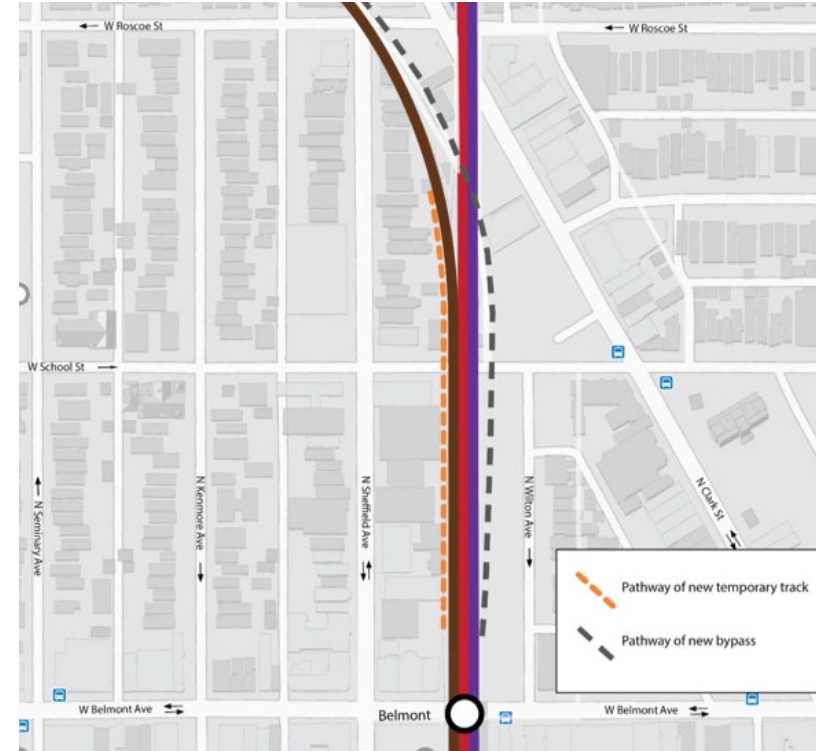
Relocation of Vautravers building, 947-949 W Newport



# Building a temporary track for Loop-bound Brown Line trains



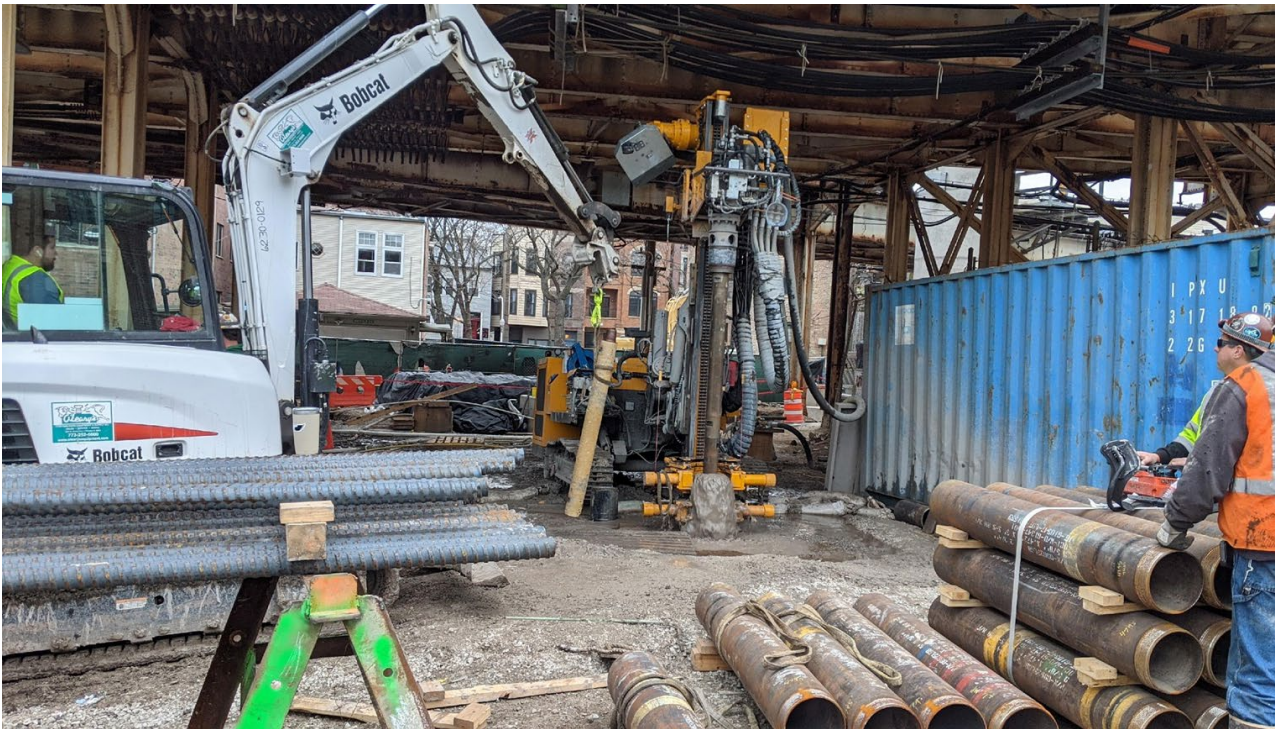
New temporary track over alley west of Red & Purple Line tracks, facing south.





# Continuing Red and Purple line service during reconstruction

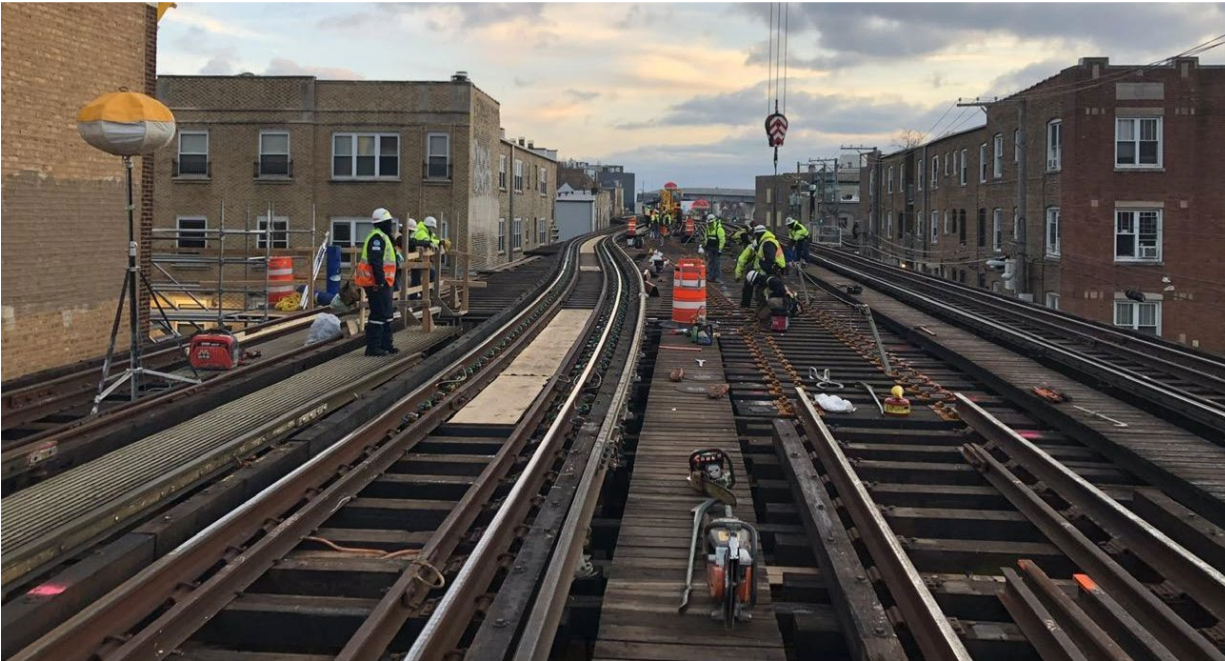
## Installing micropiles, shoring tower





# Continuing Red and Purple line service during reconstruction

## Installing track crossovers





# Reconstruction

Process and Impacts



# North Belmont Red-Purple Reconstruction Timeline

---

**2022**

**2023**

**2024**

**2025**

---

**Stage 1**

---

**Stage 2**





Demolish 100-year old structures



Drill new track foundations



Build new track structure





# Track structure modernization: Lead abatement work

- RPM includes removal of all lead-based paint from its structures in the RPM project area
- Work will occur in strict adherence with all federal and local laws to keep community safe
- Work includes hand tools for spot removal and power tools
- All personnel doing the work are trained and certified in removal and disposal of lead paint; state-certified Industrial Hygienist oversees the work to ensure safety and compliance with laws
- Workspace will be contained with a “shroud” and air quality around worksite will be monitored





# Service and Community Impacts





# Impacts to CTA rail service

- Red and Purple Line service will continue throughout reconstruction 2022 -2025
- Red and Purple trains use two tracks instead of regular four tracks
- Brown Line uses temporary track structure and Red-Purple Bypass
- New boarding location for Belmont: Purple Line trains board on inside track (Red Line side) of their normal platforms instead of outside track





# How this work will affect you:

## Community impacts

---

### Impacts

- Demolition Noise
- Overnight and Weekend Work
  - Work occurs when fewest passengers are using CTA rail service

### Street and alley closures

#### Streets include:

- Cornelia
- Roscoe
- Clark
- Newport
- School

#### Alleys include:

- Alleys under tracks between Cornelia and Belmont

### Mitigations

- No more than one major street closed at a time
- No more than two alleys closed
- Alternative parking for affected residents
- Garbage pickup to be maintained



# Overnight work and noise impacts

- Loud noise and vibration will come from driving sheet pile, running heavy machinery, and demolition activities
- Though some work will be required to follow a 24/7 schedule, the contractor will perform the noisiest activities during daytime hours whenever possible
- Noise mitigation techniques such as the use of sound blankets and sound barriers will be implemented as needed
- All loud activities will be monitored to be within limitations set by the contract (90 decibels daytime and 80 decibels nighttime\*)

\*Noise limit, 1 hour Leq (dBa) Leq = equivalent continuous sound level; dBa = A-weighted decibel



RPM sheet pile driving testing on the Purple Line with noise monitoring, November 2020



# How we will continue to inform you:

- Virtual town halls and small community meetings
- Monthly virtual “office hours”
- Construction Activity Notices (CANs) – paper and digital
- RPM Scoop, weekly construction project summary newsletter
- Service alerts for customers
- Social media and web site
- RPM community office (5137 N Broadway)
  - Monday, Wednesday and Friday  
10 a.m. to 5:00 p.m. and by appointment







## Business support through the RPM Open for Business Program

---

Participants can apply for this program to be included in marketing efforts

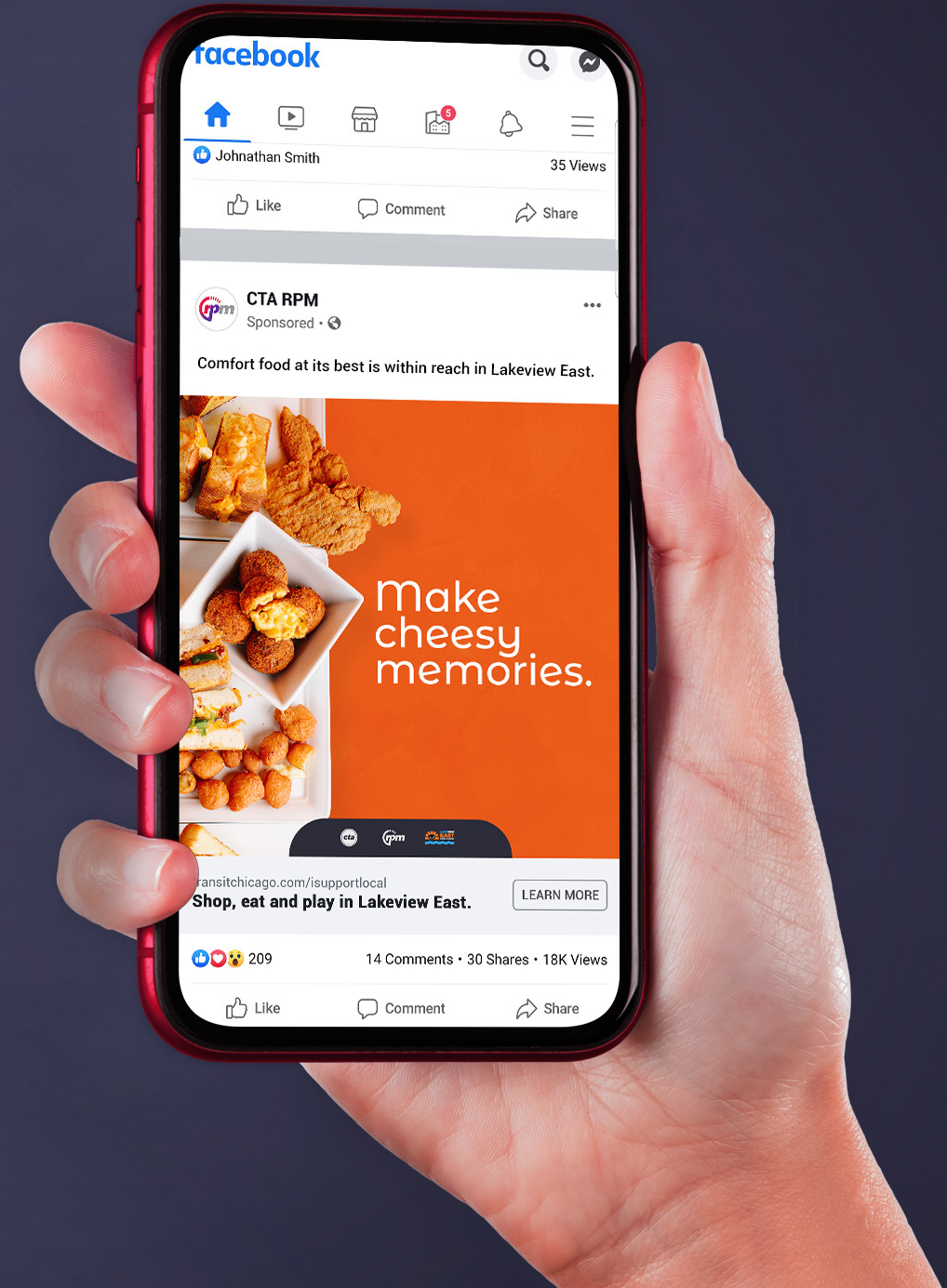


# Supporting small businesses

- Closure banners
- Communication tools – service alerts, eblasts
- Doorhangers and flyers
- Supporting campaigns to encourage people to shop, eat, play and explore in Lakeview East
- Digital ads



Apply:  
[o4bp.submittable.com](https://o4bp.submittable.com)





# Q&A



# Stay Informed

- Red & Purple Line Service Updates: [transitchicago.com/updates](https://transitchicago.com/updates)
- Website: [transitchicago.com/rpm](https://transitchicago.com/rpm)
- General Information: [RPM@transitchicago.com](mailto:RPM@transitchicago.com)
- Construction Alerts & Virtual Office Hours: [transitchicago.com/rpmalerts](https://transitchicago.com/rpmalerts)
- Email us: [rpm@transitchicago.com](mailto:rpm@transitchicago.com)
- Call us: 331-303-2499 for a call back or CTA Customer Service: 888-YOUR-CTA



Follow us:  
**@CTARPM**

