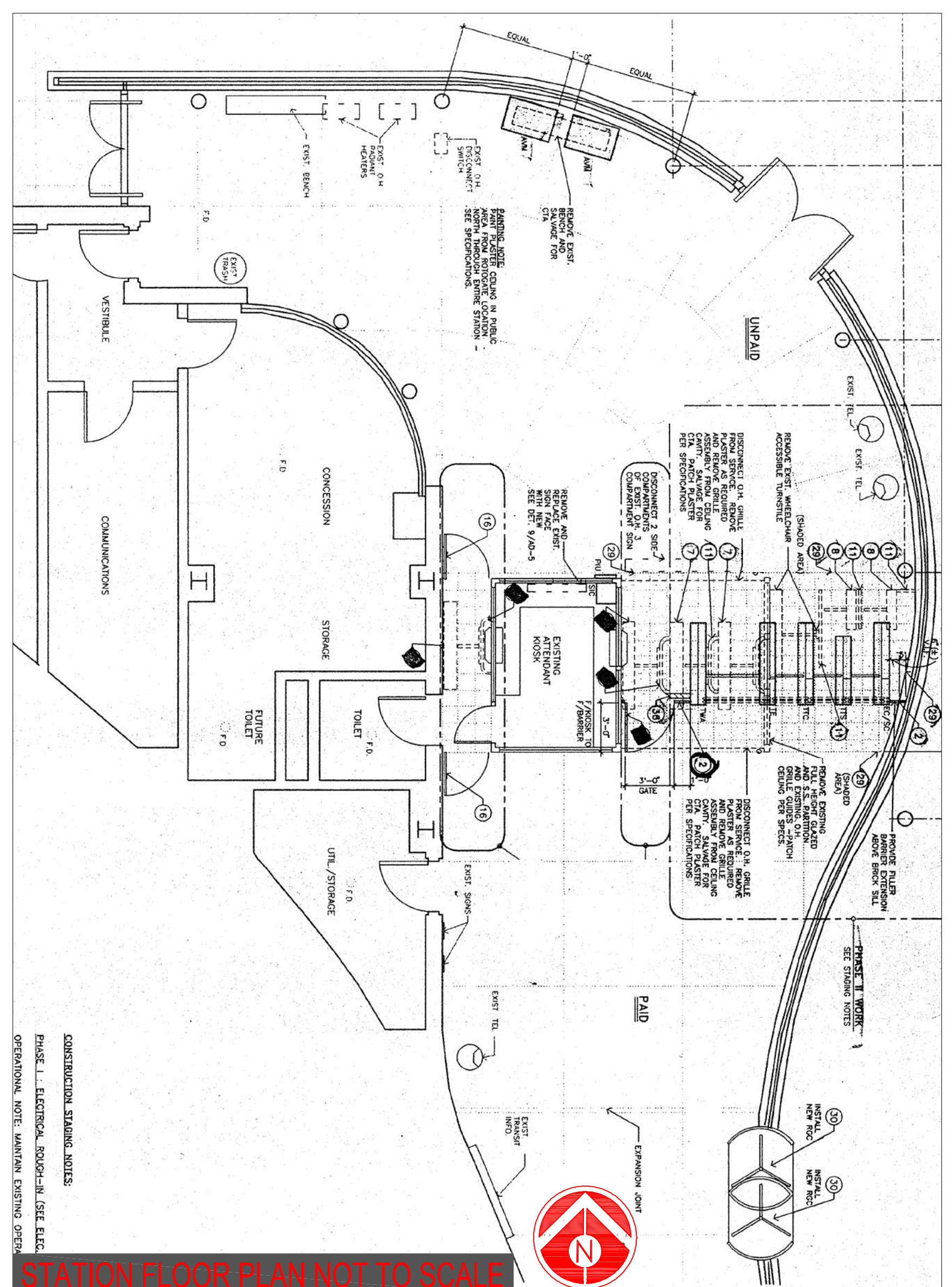
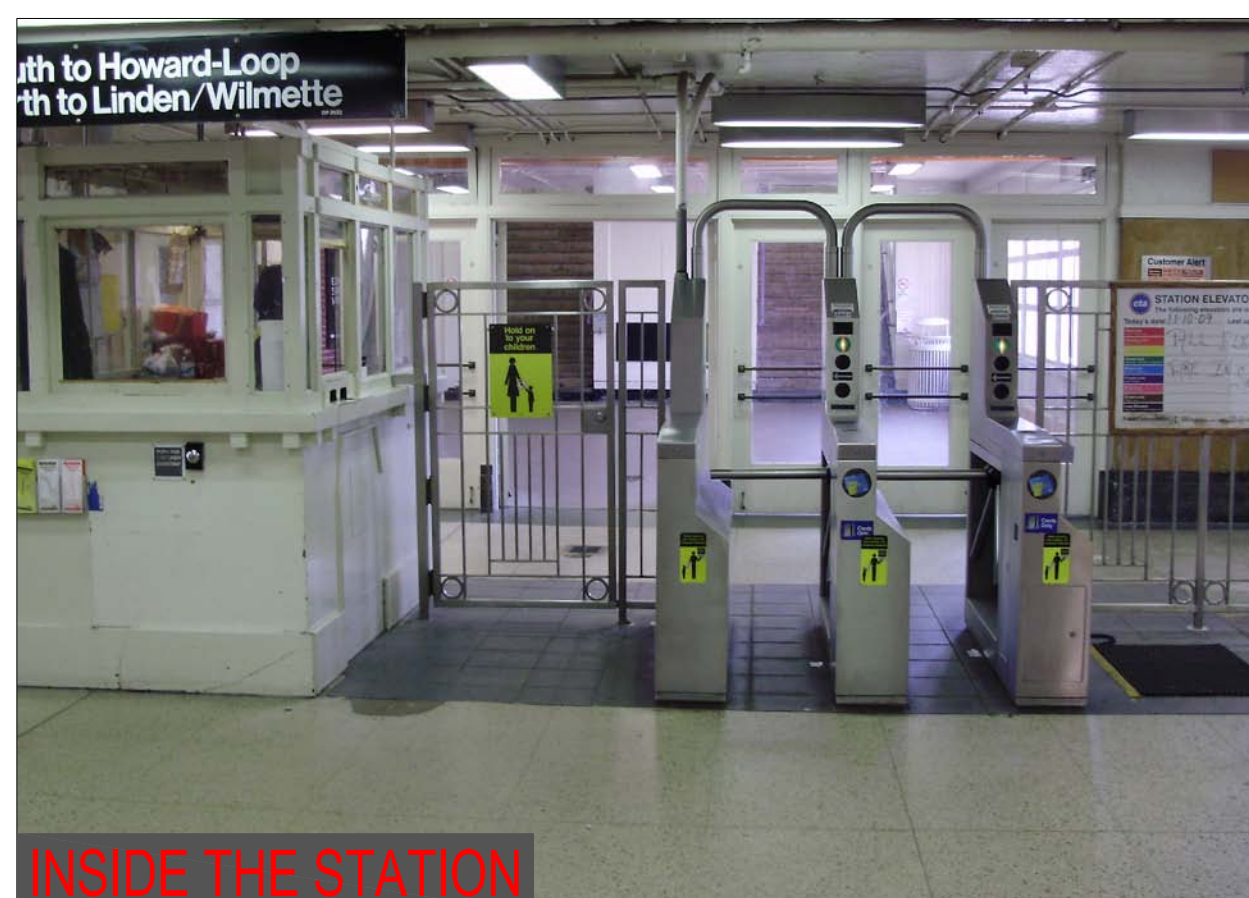
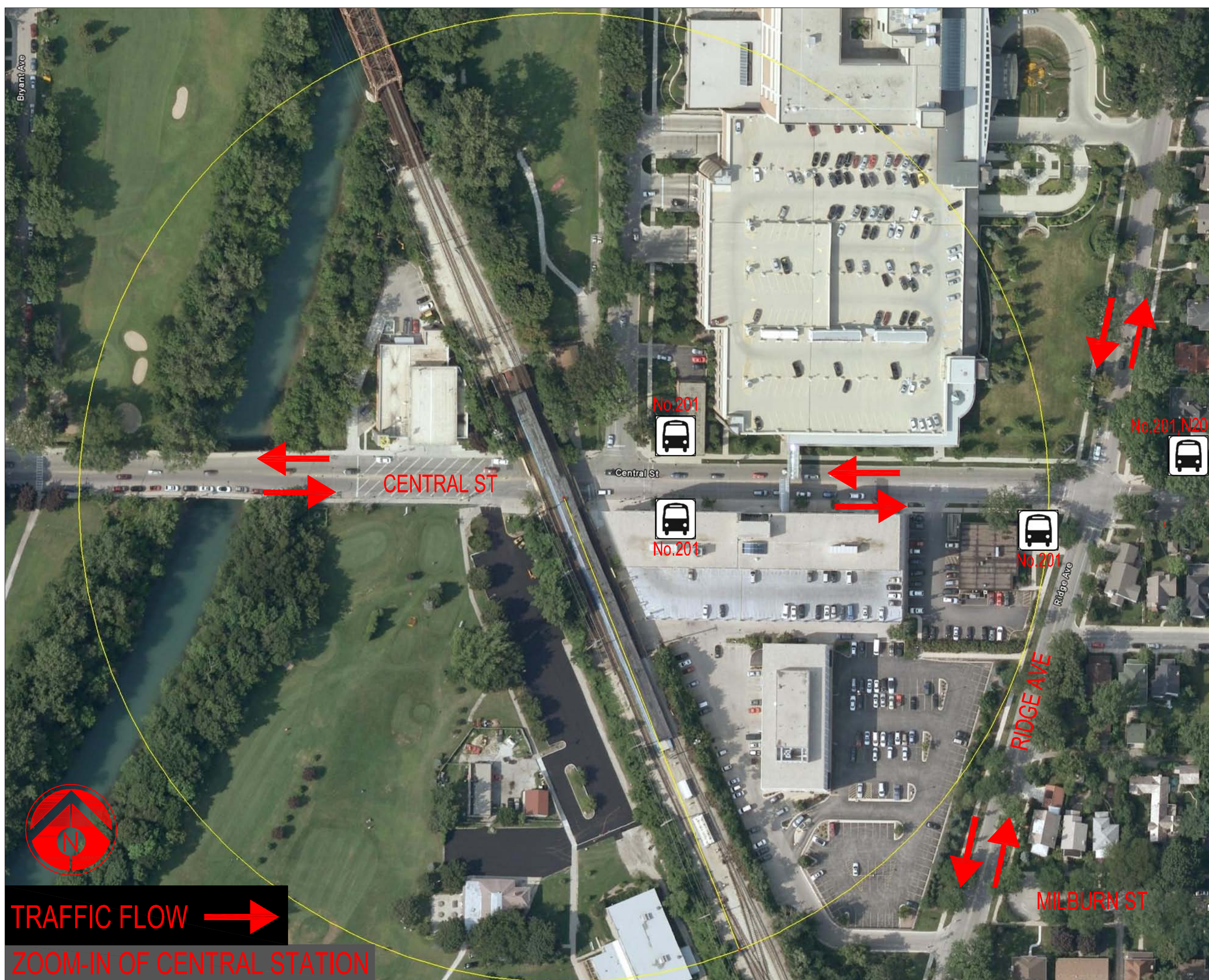


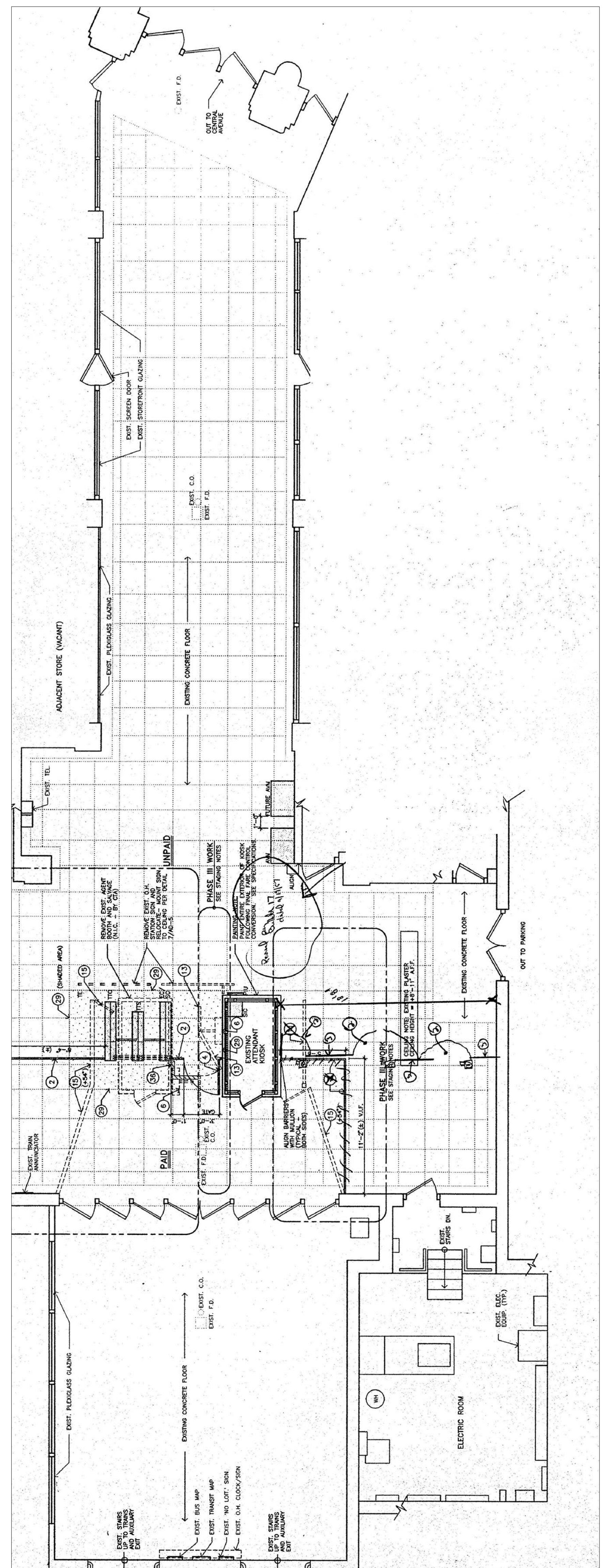


Ridership: 1120/weekday
Initially Constructed: 1913
Reconstructed: 1993
Ramps: Yes
Platform Width: 21'





Ridership: 890/weekday
Initially Constructed: 1931
Platform Width: 17'
Historic Station: Eligible for Illinois
Historic Register

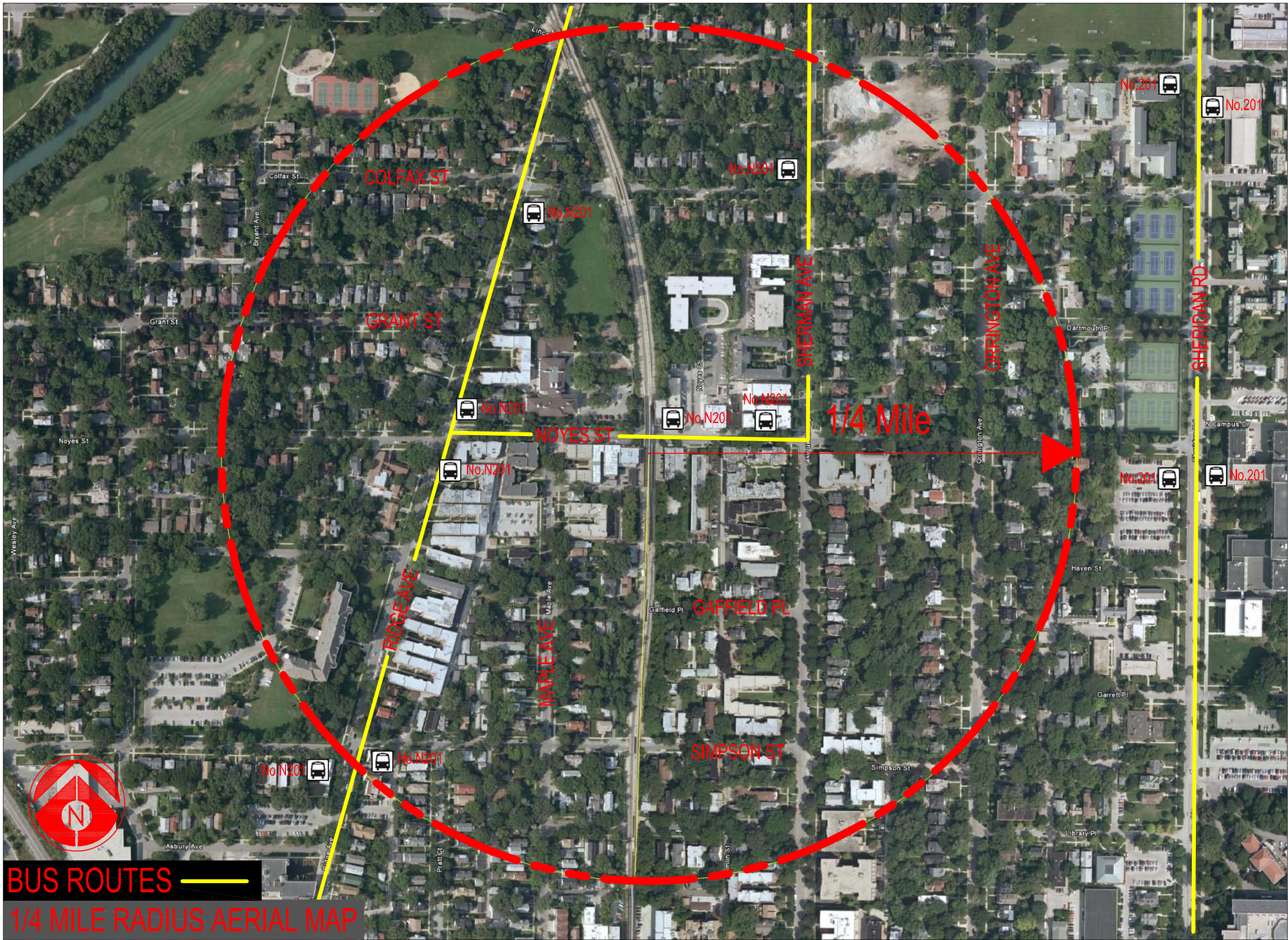


STATION FLOOR PLAN NOT TO SCALE





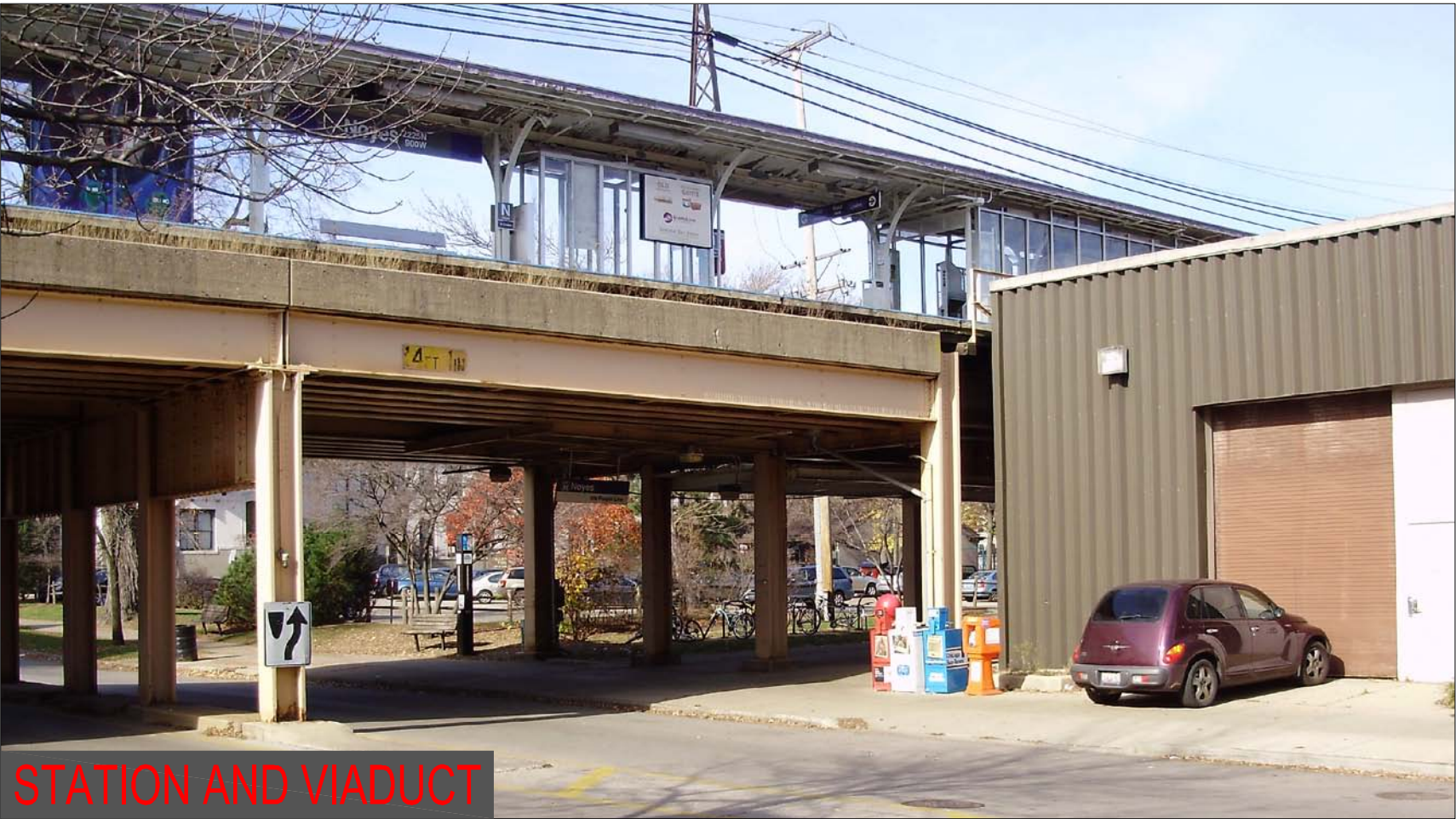
STATIONS: NOYES



BUS ROUTES
1/4 MILE RADIUS AERIAL MAP

NOYES STATION

Ridership: 680/weekday
Initially Constructed: 1931
Rehabilitation: 1964
Platform Width: 14'



STATION AND VIADUCT



TRAFFIC FLOW
ZOOM-IN OF NOYES STATION



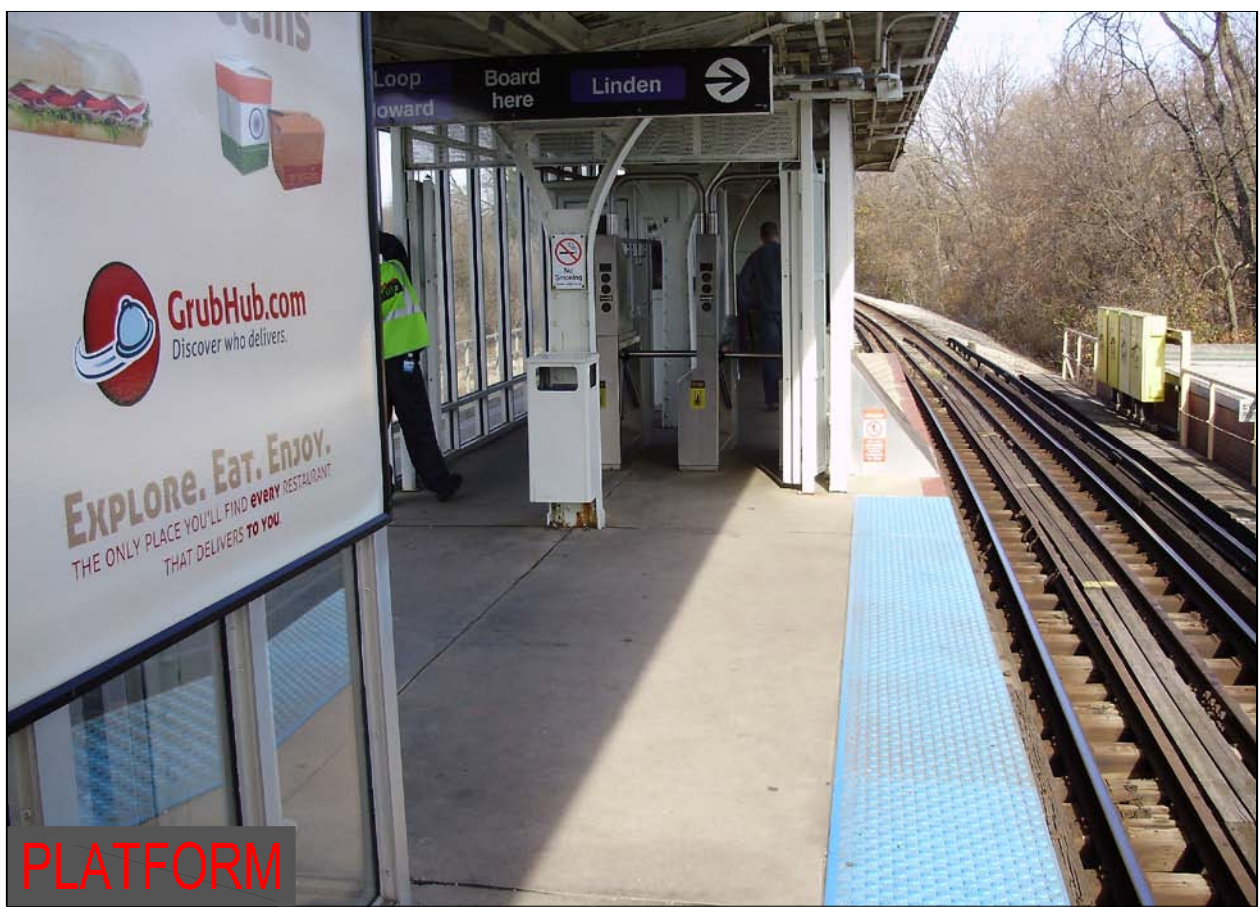
STATION AND VIADUCT



PLATFORM



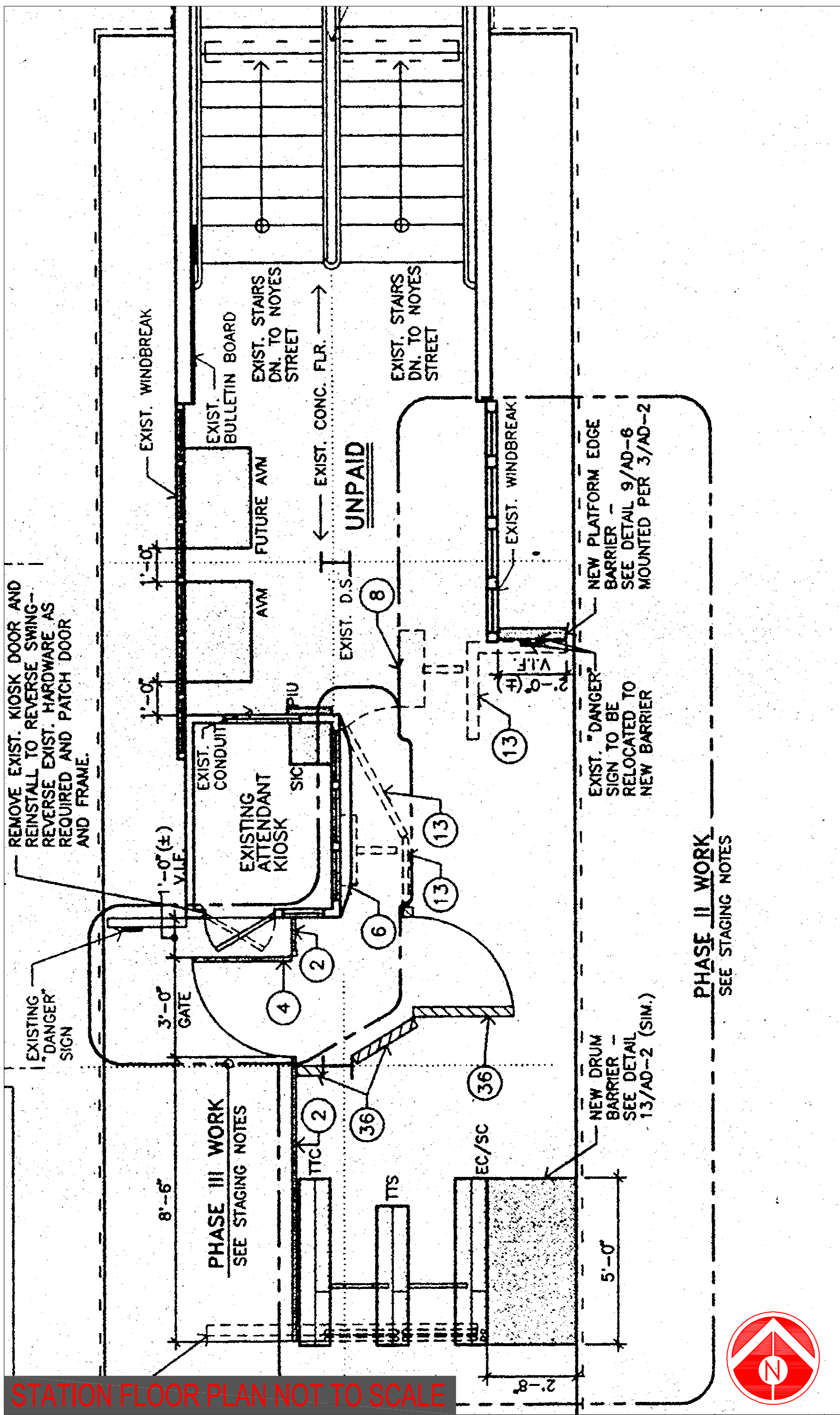
STATION AND VIADUCT



PLATFORM



INSIDE THE STATION

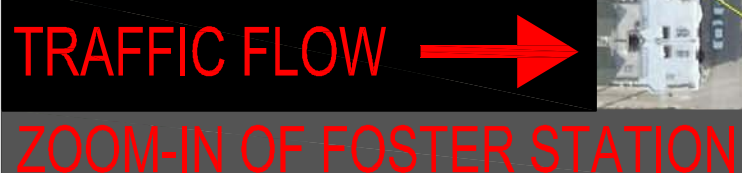


STATION FLOOR PLAN NOT TO SCALE





Ridership: 790/weekday
Initially Constructed: 1931
Rehabilitation: 1964
Platform Width: 14'





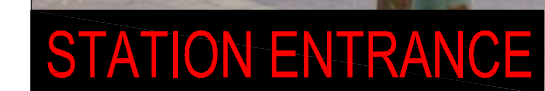
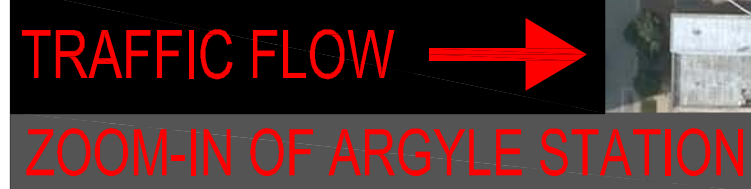
Ridership: 3850/weekday
Initially Constructed: 1910
Reconstructed: 1994
Elevators: Yes
Platform Width: 12'

Initially Constructed: 1910

Reconstructed: 1994

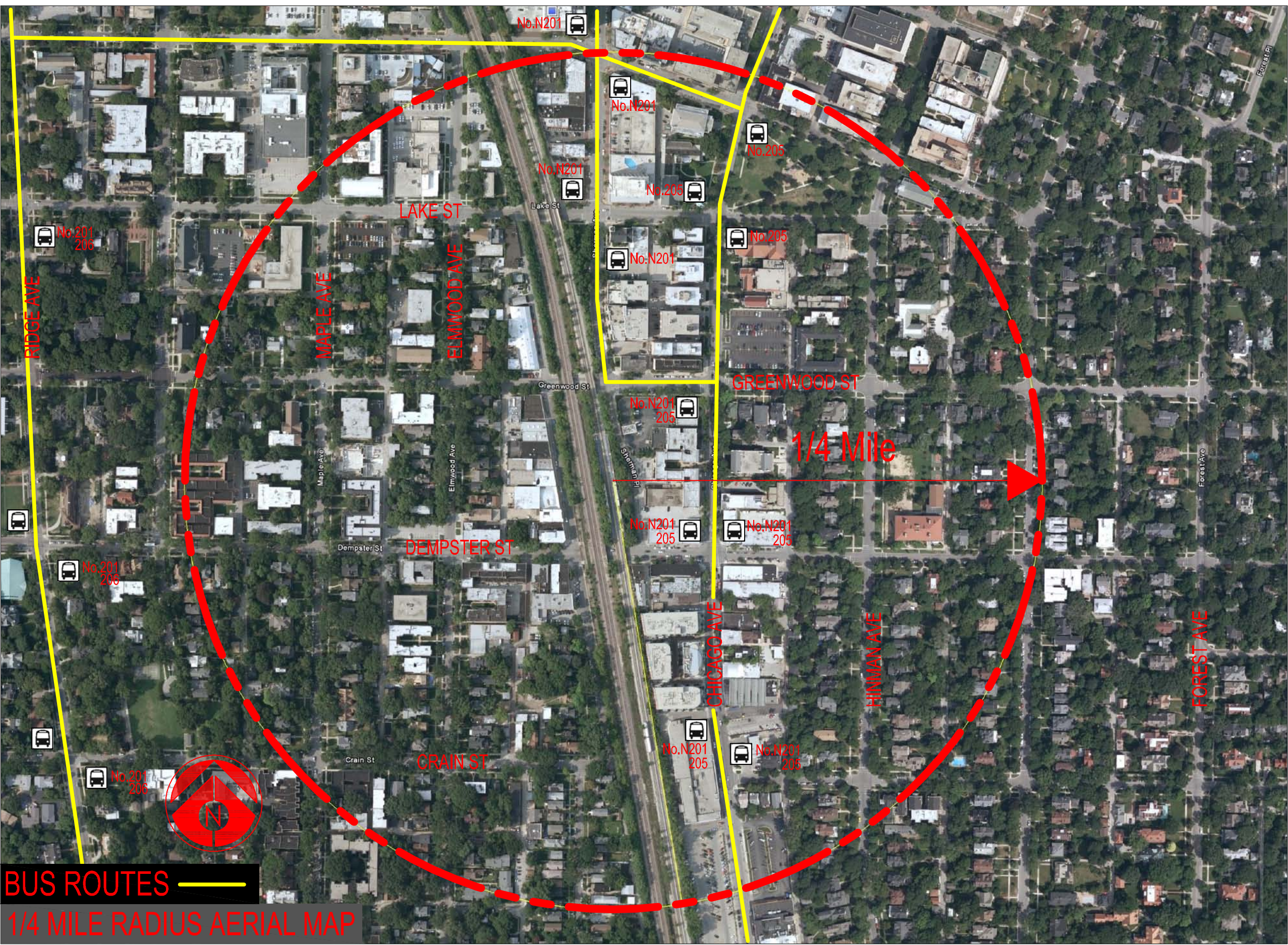
Elevators: Yes

Platform Width: 12'





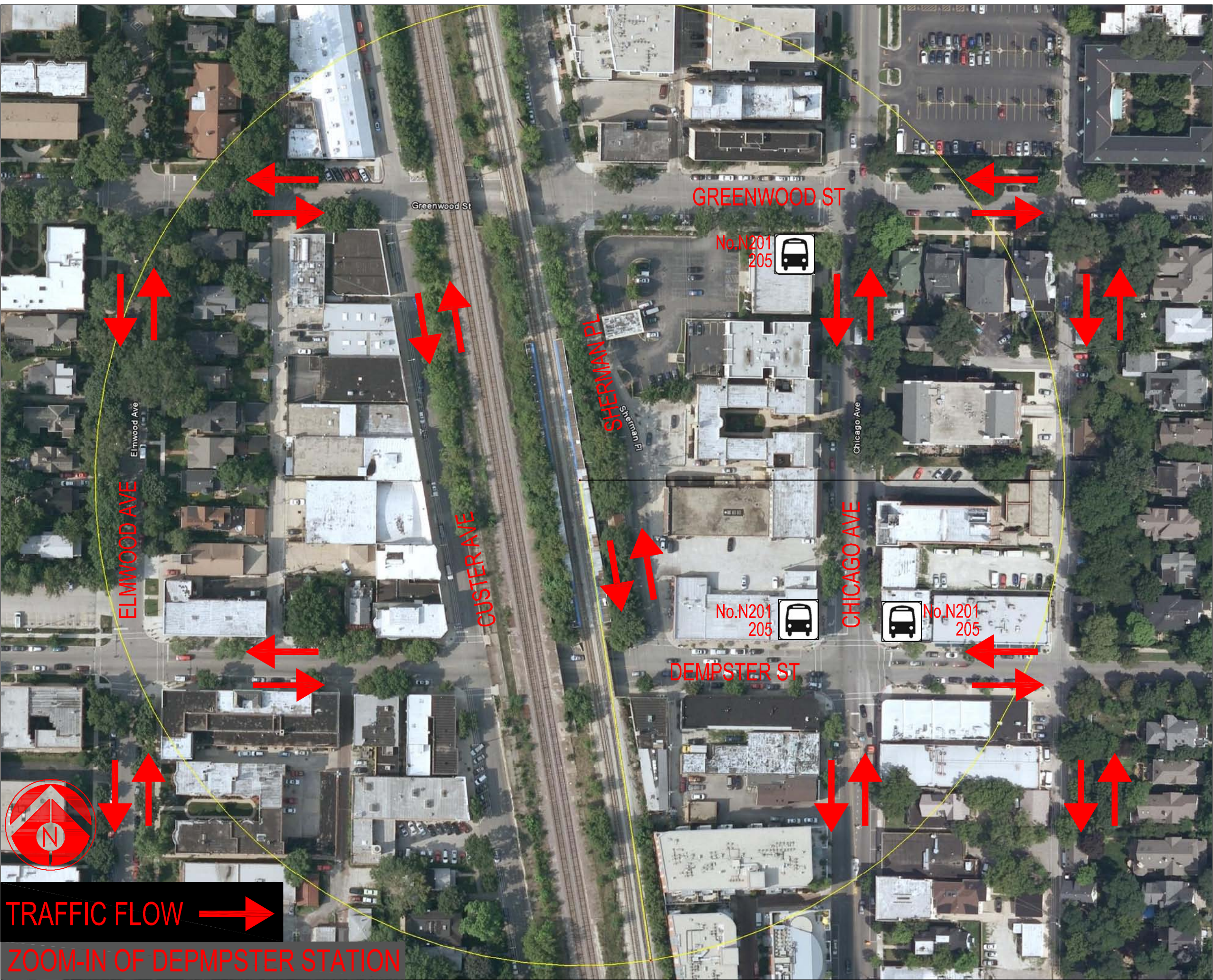
STATIONS: DEMPSTER



BUS ROUTES
1/4 MILE RADIUS AERIAL MAP

DEMPSTER STATION

Ridership: 800/weekday
Initially Constructed: 1910
Platform Width: 10'
Historic Station: Eligible for Illinois
Historic Register



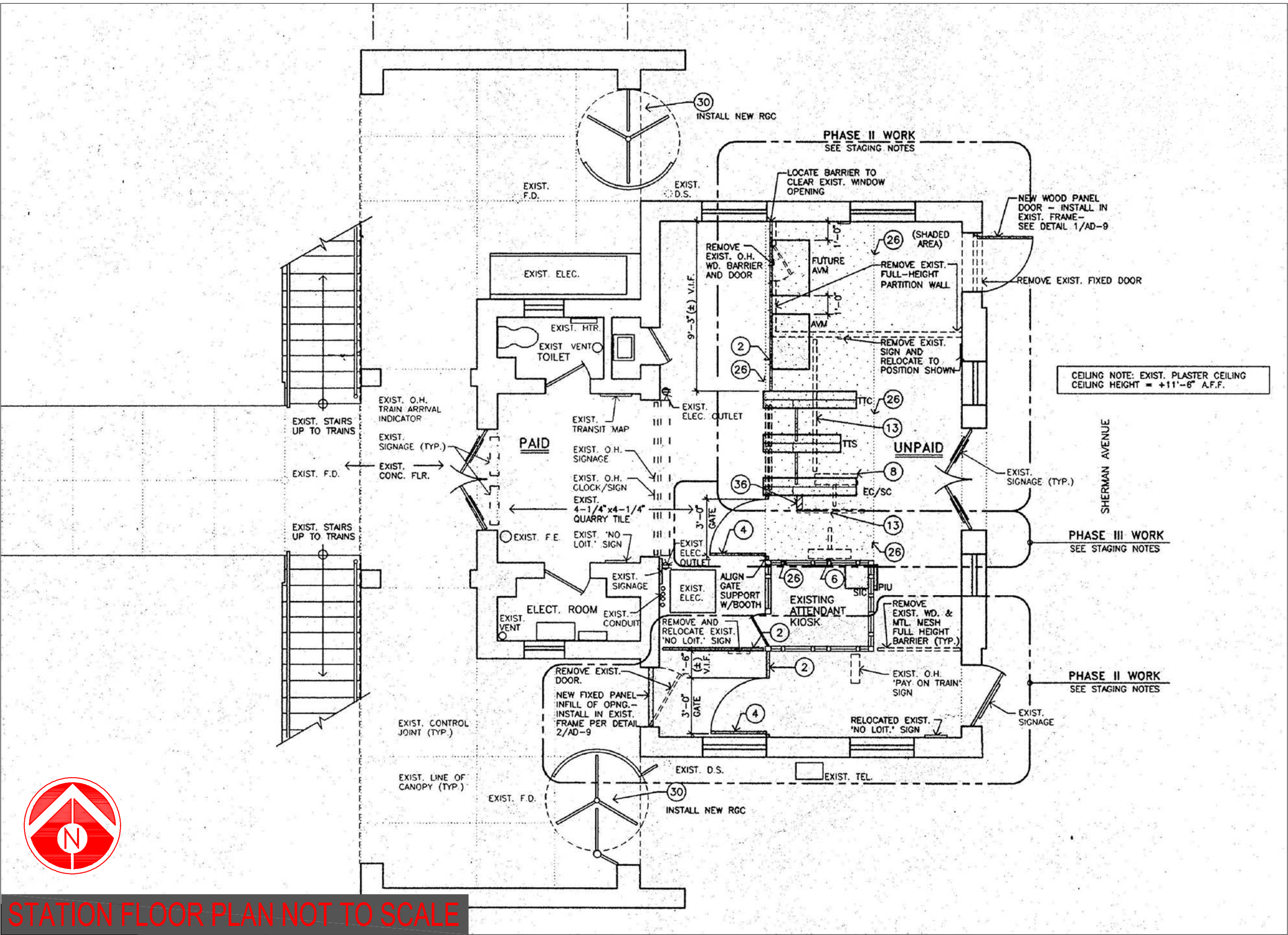
TRAFFIC FLOW
ZOOM-IN OF DEMPSTER STATION



STATION



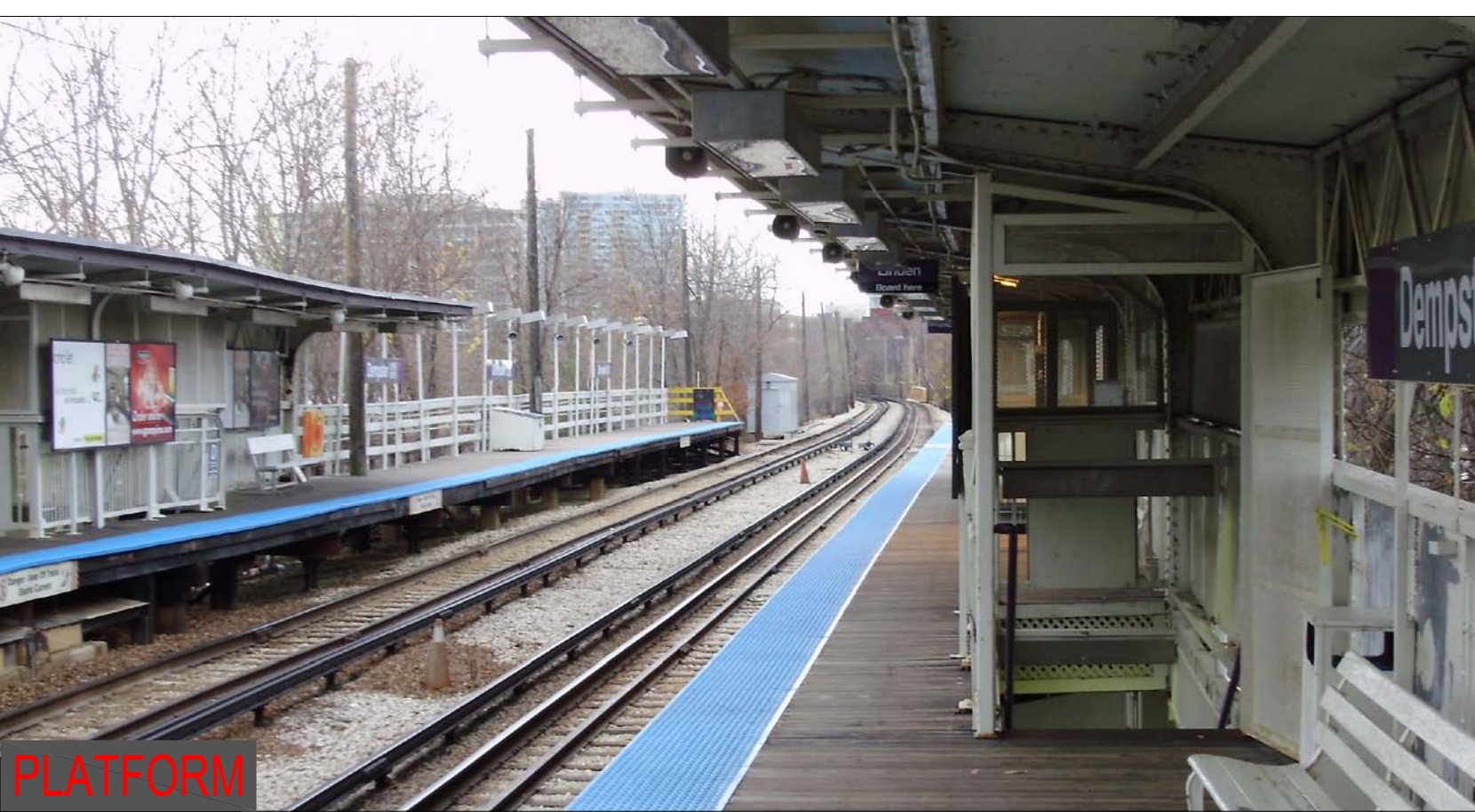
VIADUCT



STATION FLOOR PLAN NOT TO SCALE



INSIDE THE STATION



PLATFORM



STATIONS: MAIN



BUS ROUTES
1/4 MILE RADIUS AERIAL MAP

MAIN STATION

Ridership: 1210/weekday

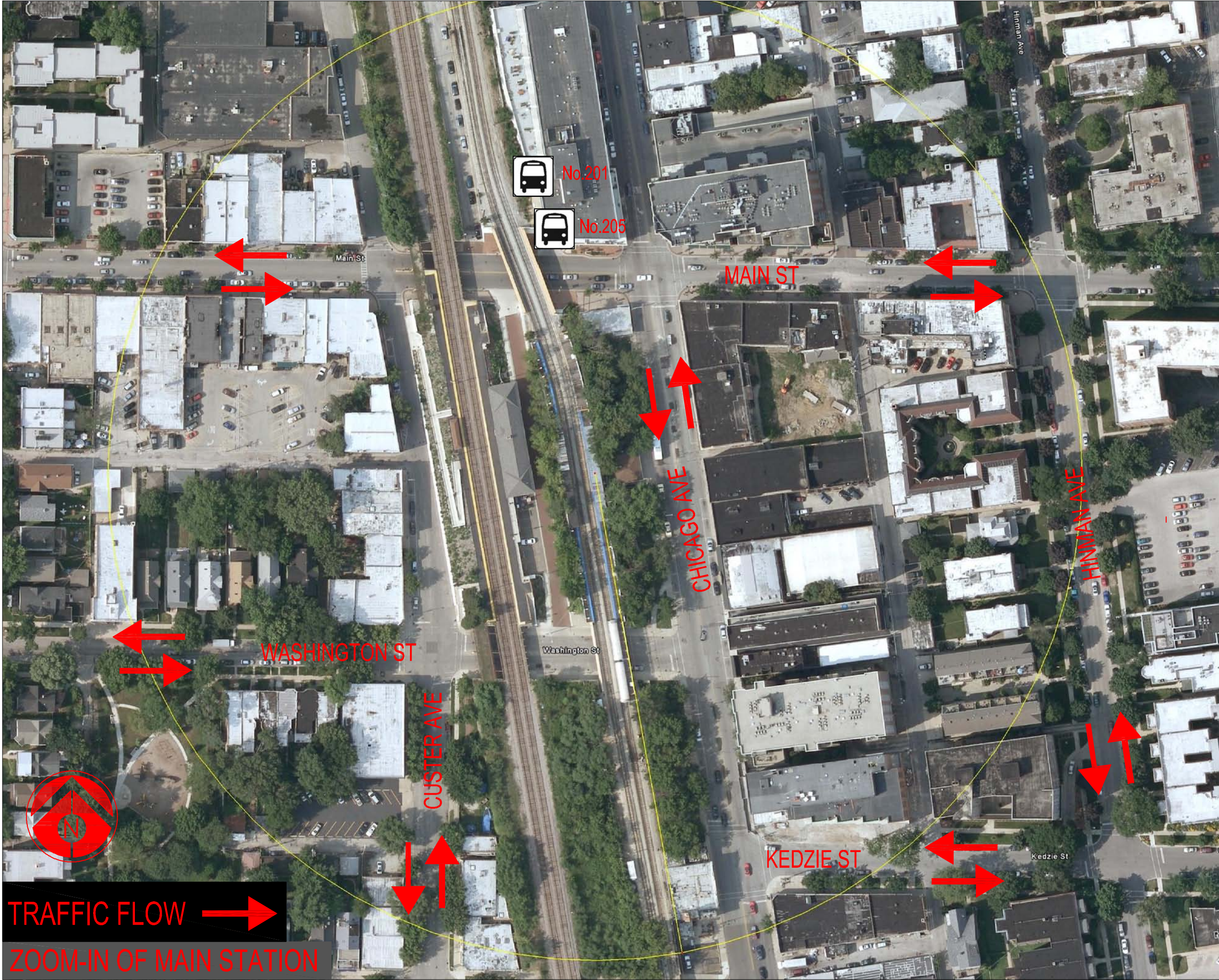
Initially Constructed: 1910

Platform Width: 8'-10'

Historic Station: Eligible for Illinois
Historic Register



STATION



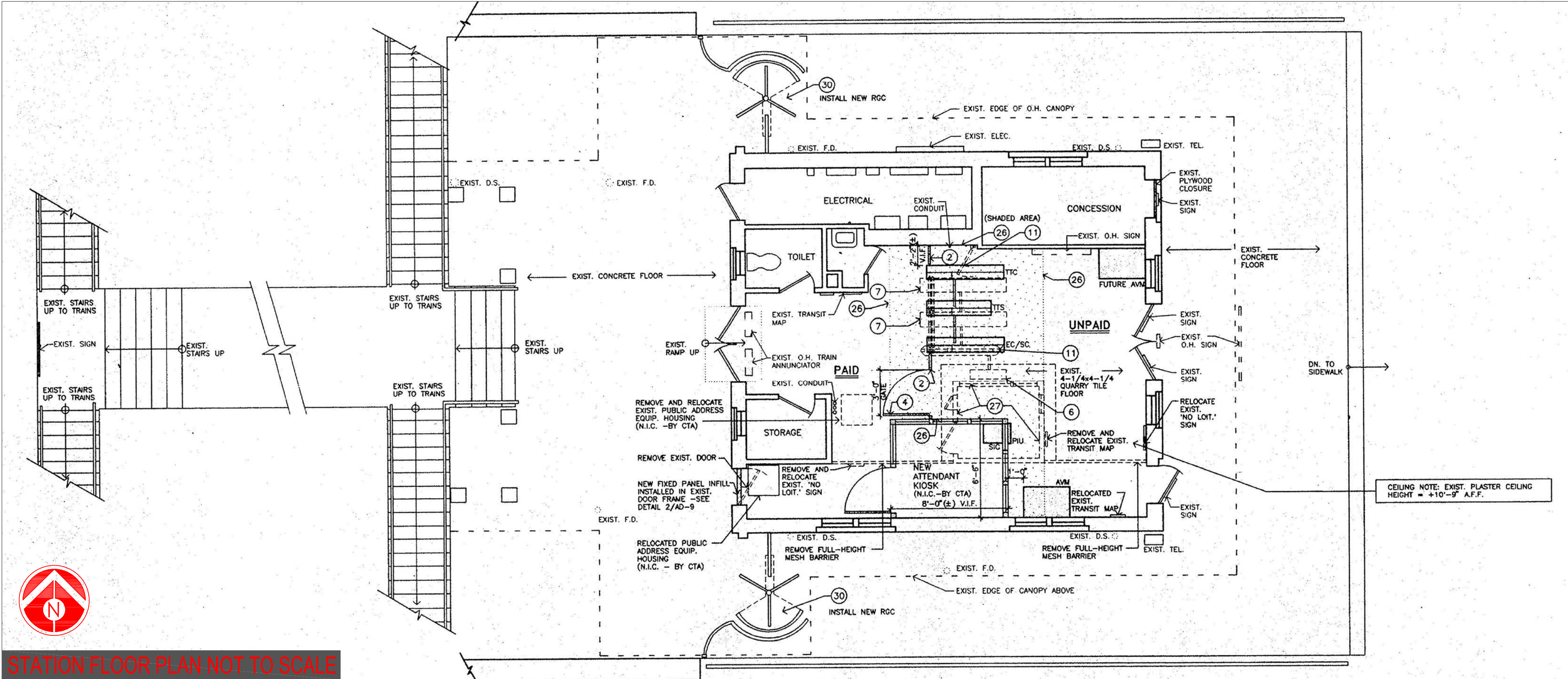
TRAFFIC FLOW
ZOOM-IN OF MAIN STATION



VIADUCT



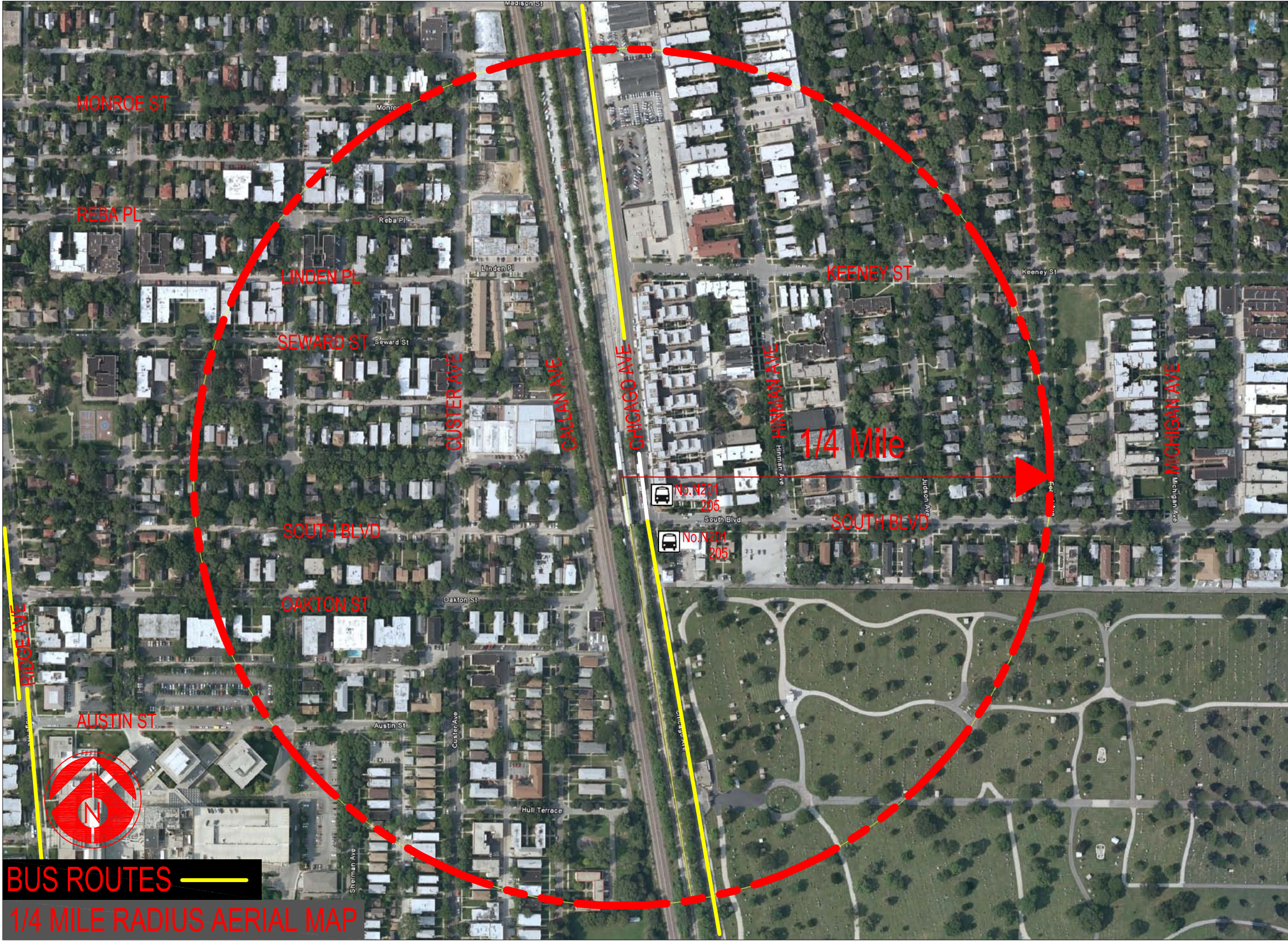
PLATFORM



STATION FLOOR PLAN NOT TO SCALE

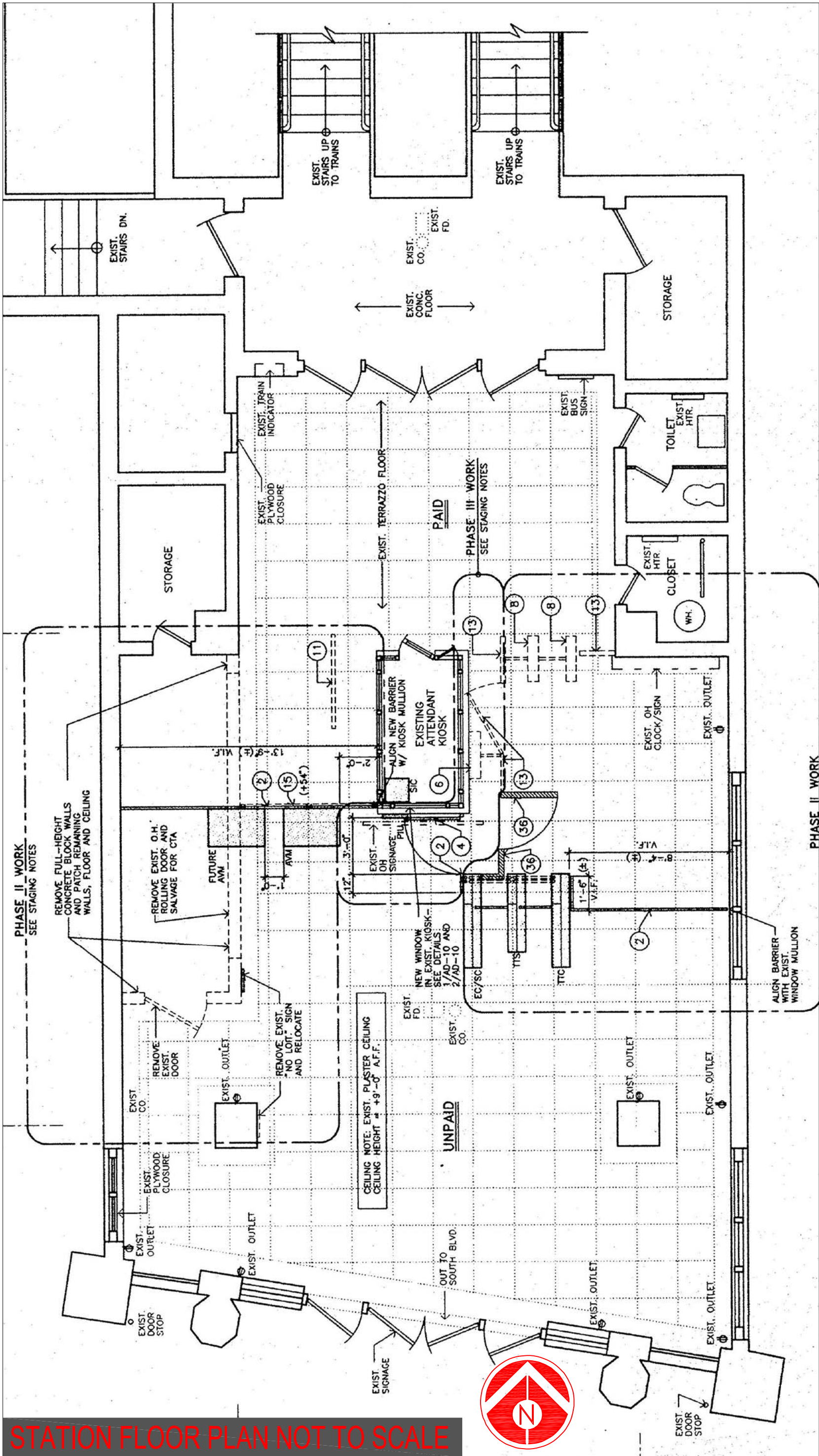


STATIONS: SOUTH BLVD



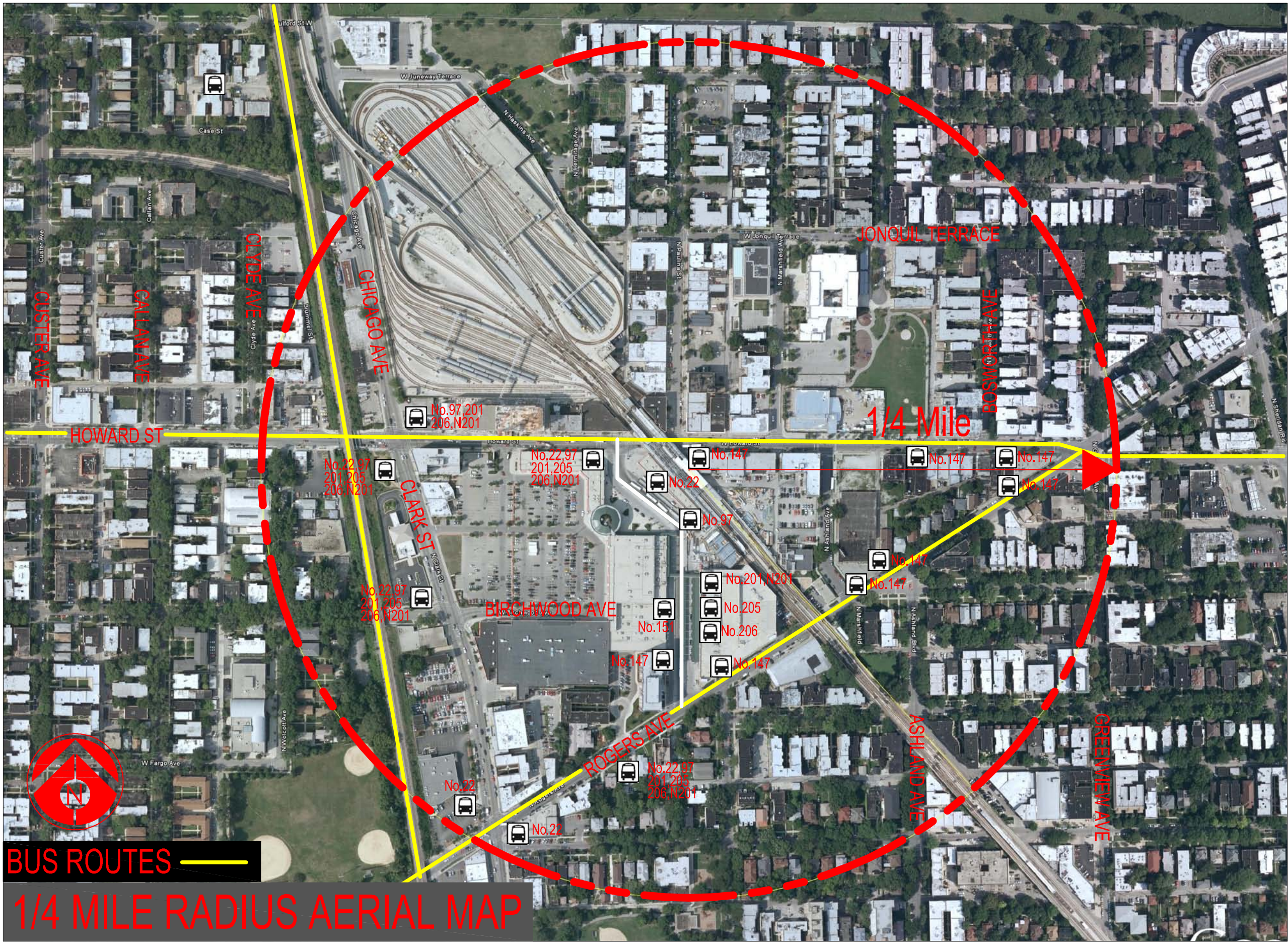
SOUTH BLVD STATION

Ridership: 770/weekday
Initially Constructed: 1931
Platform Width: 9'-13'
Historic Station: Eligible for Illinois
Historic Register





STATIONS: HOWARD



HOWARD STATION

Ridership: 6290/weekday
Initially Constructed: 1921
Reconstructed: 2009
Elevator: Yes
Platform Width: 12'-16'

