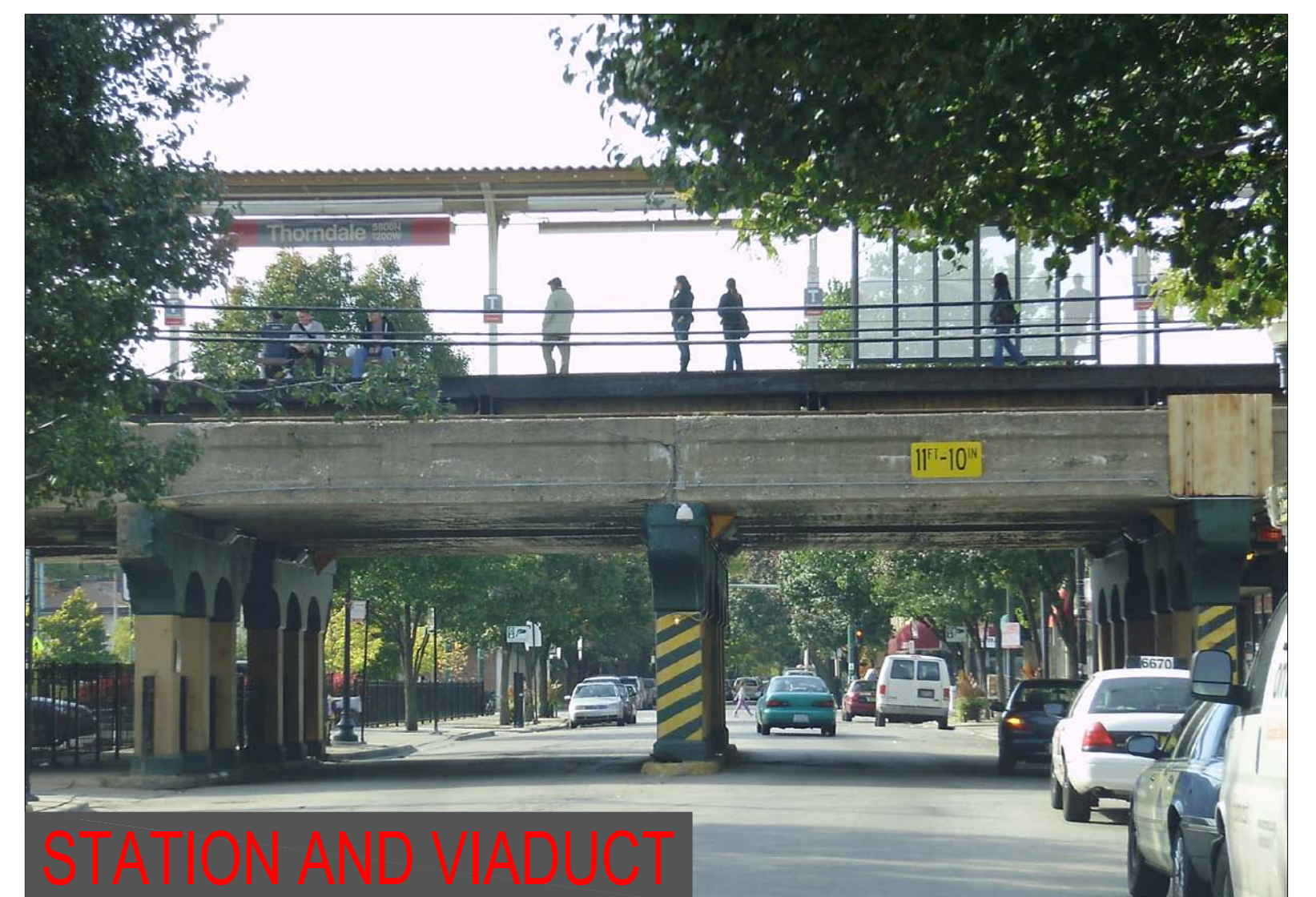




Initially Constructed: 1921

Historic Station: Eligible for Illinois  
Historic Register



## STATION AND VIADUCT



## STRUCTURE

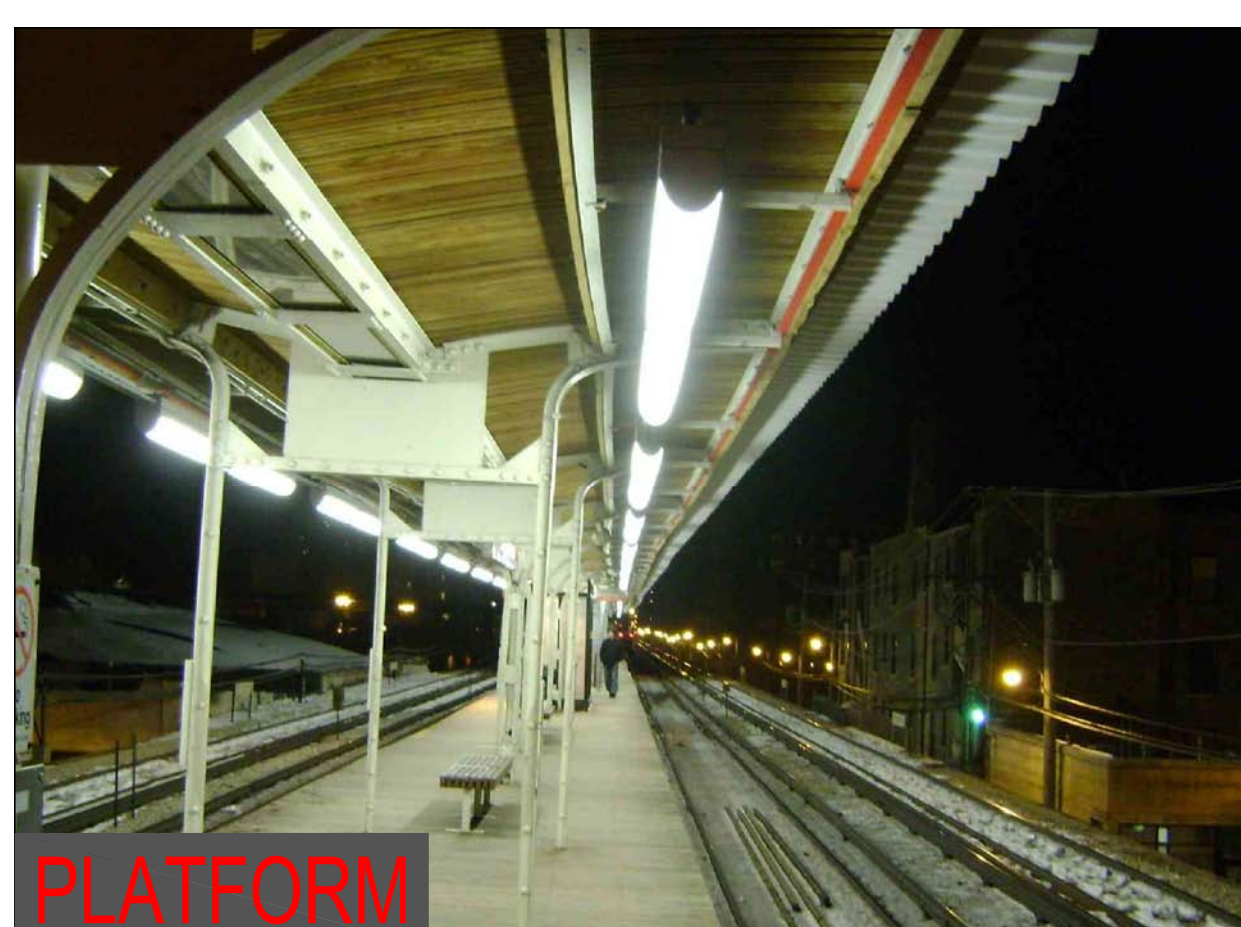
## VIADUCT



## STATION AND VIADUCT



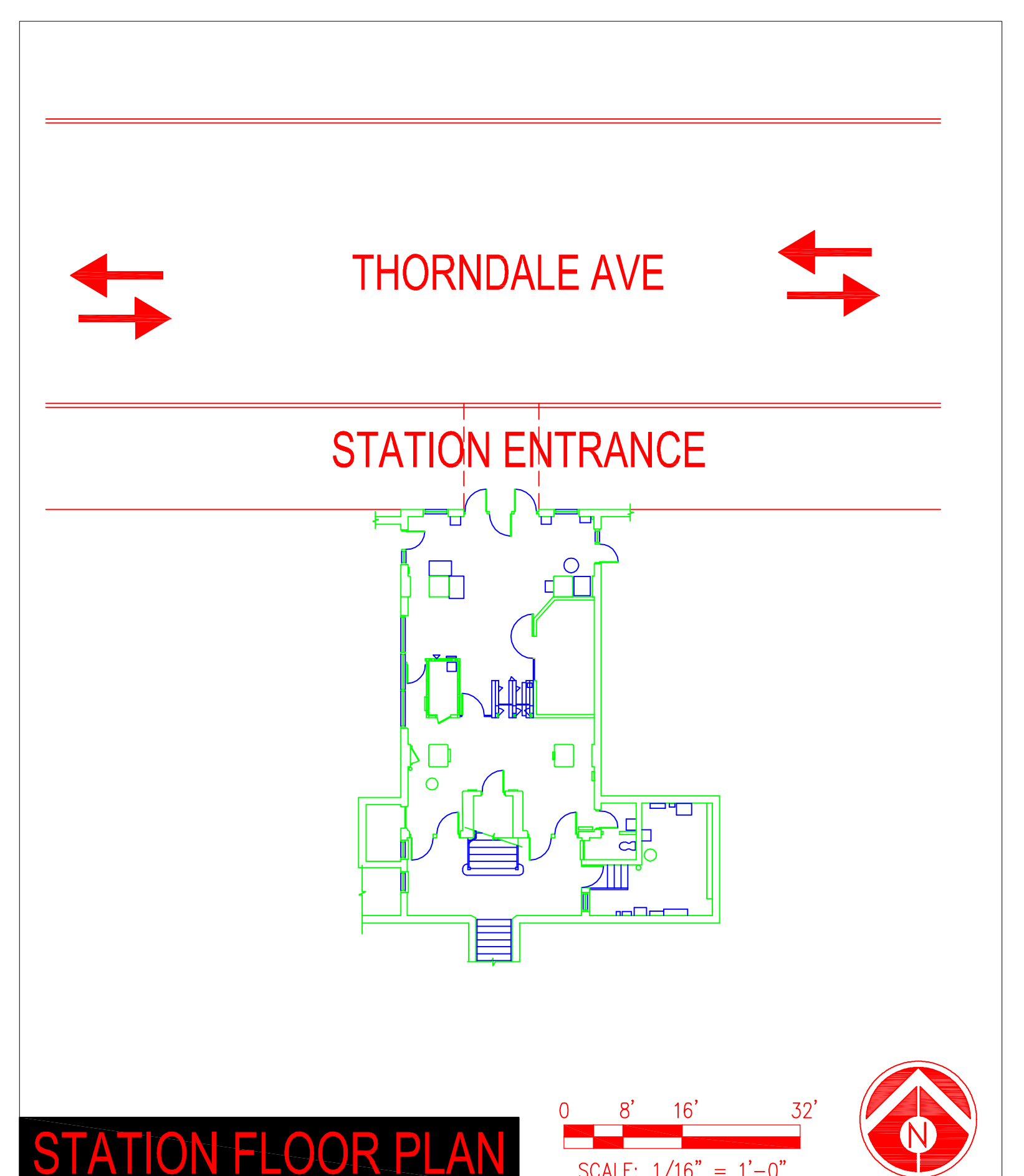
## STATION AND VIADUCT



# PLATFORM



## INSIDE THE STATION



## STATION FLOOR PLAN

0 8' 16' 32'

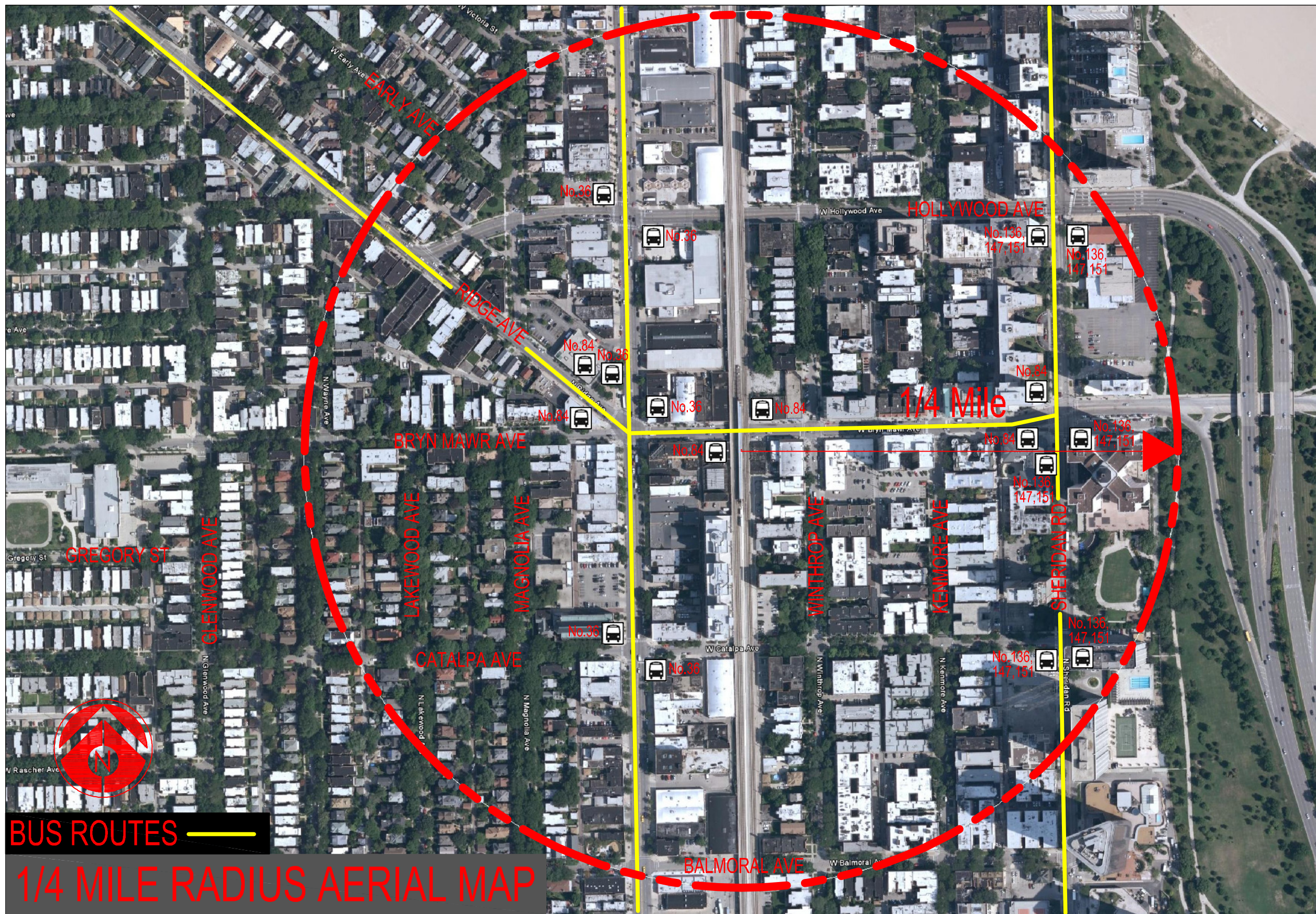
SCALE: 1/16" = 1'-0"





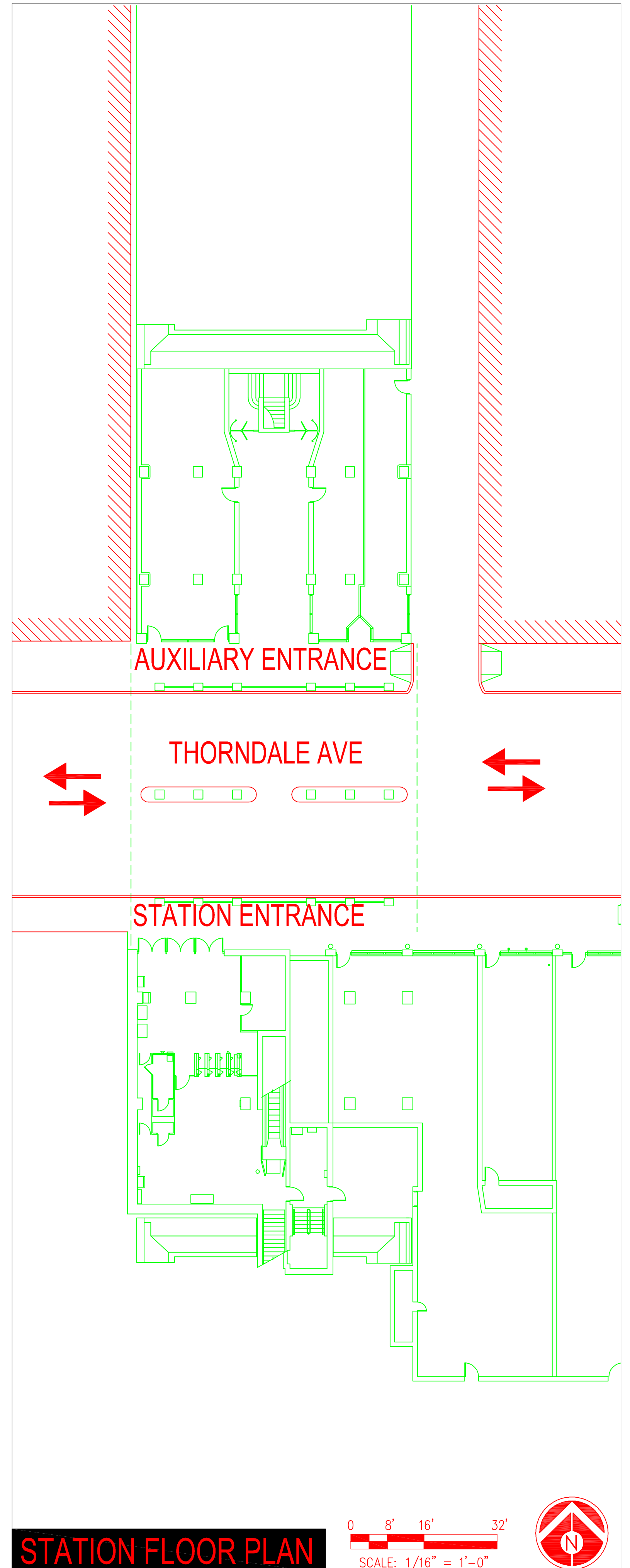
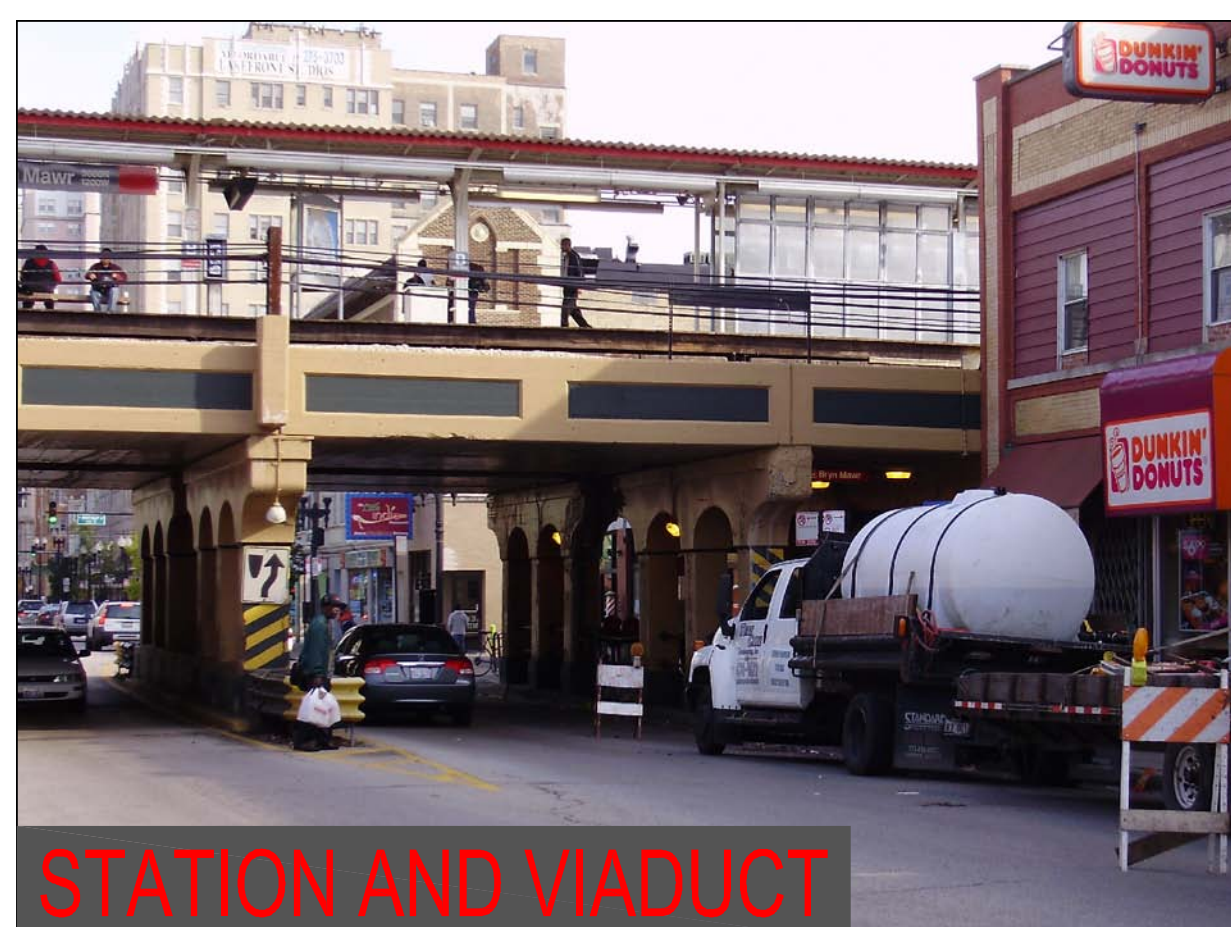
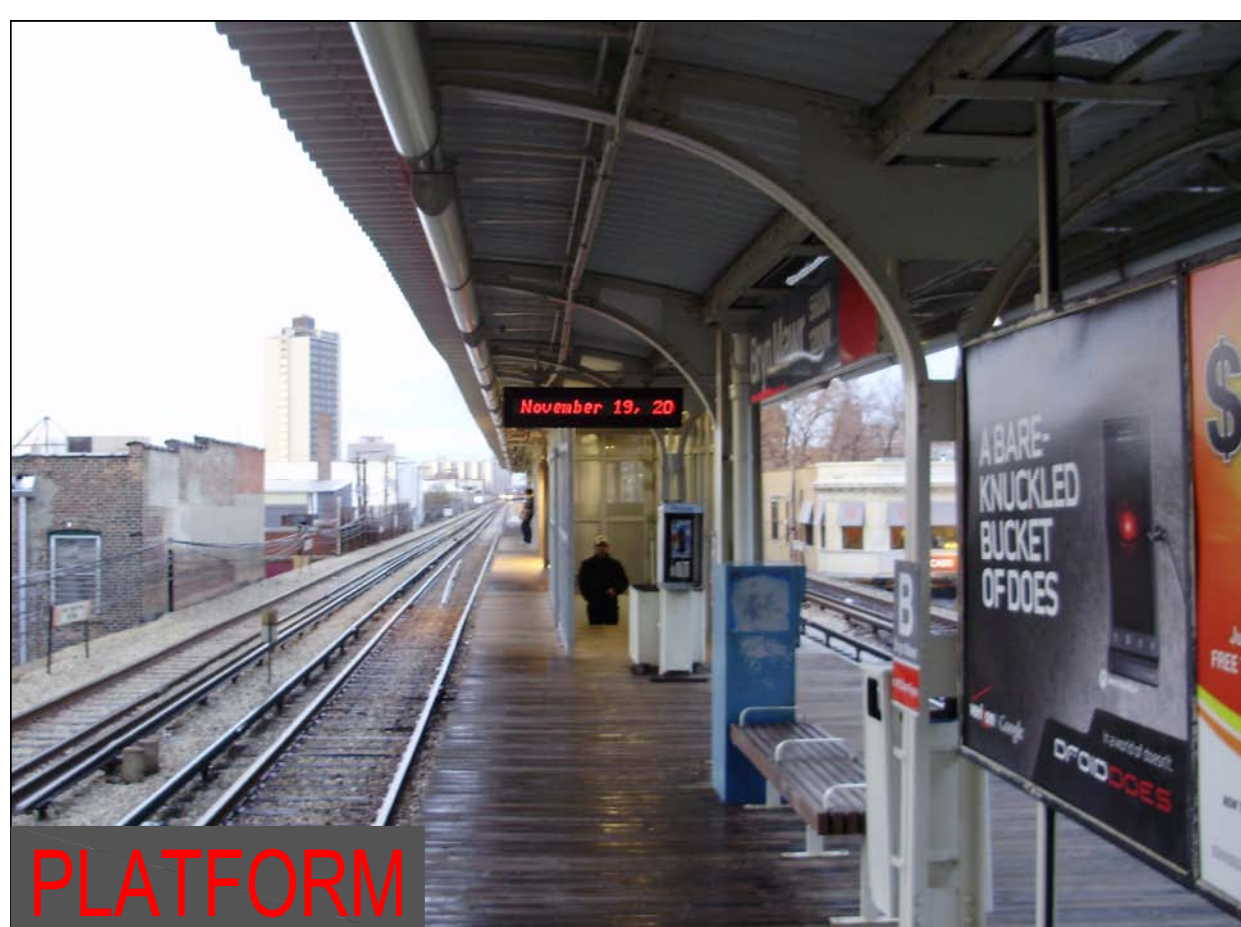
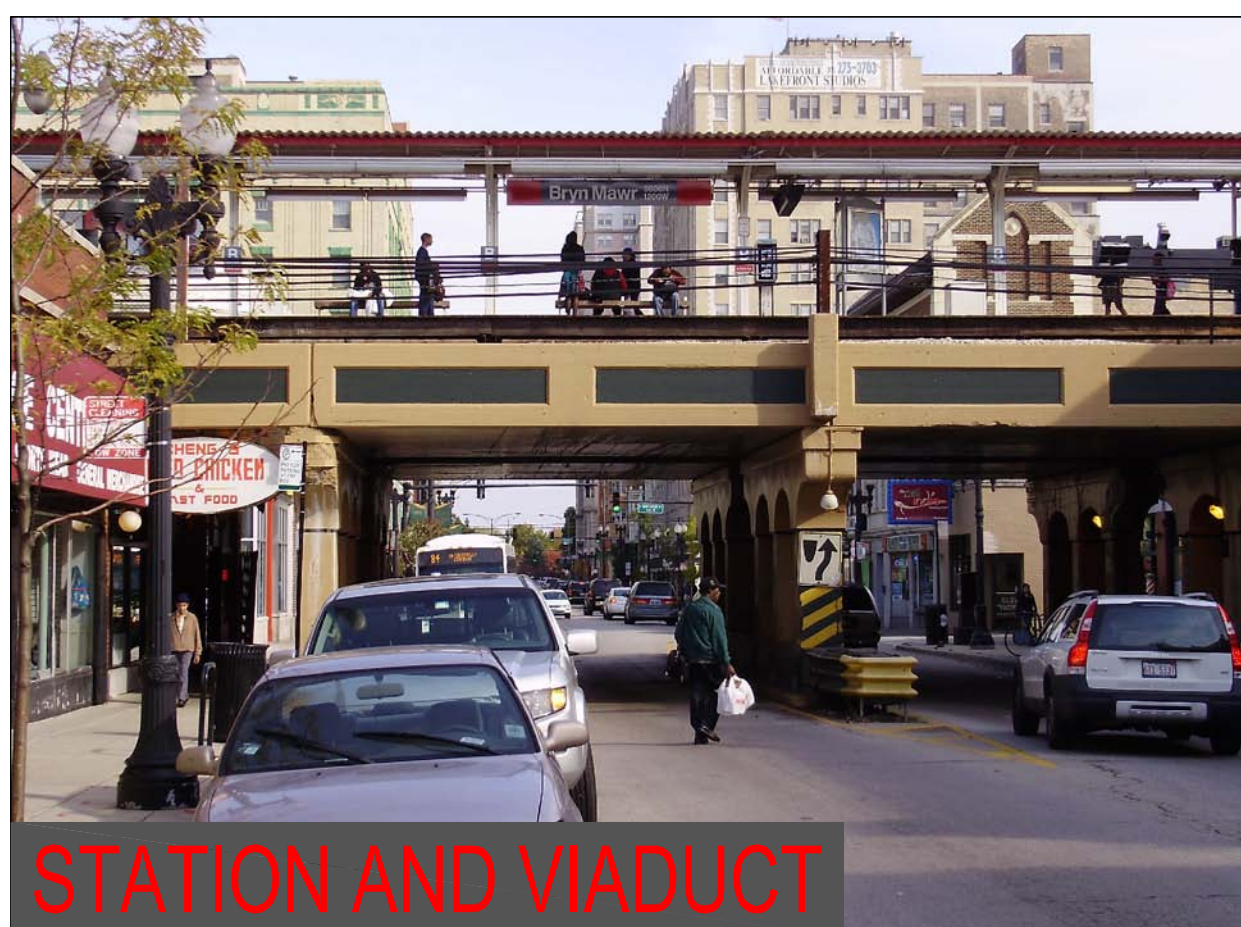
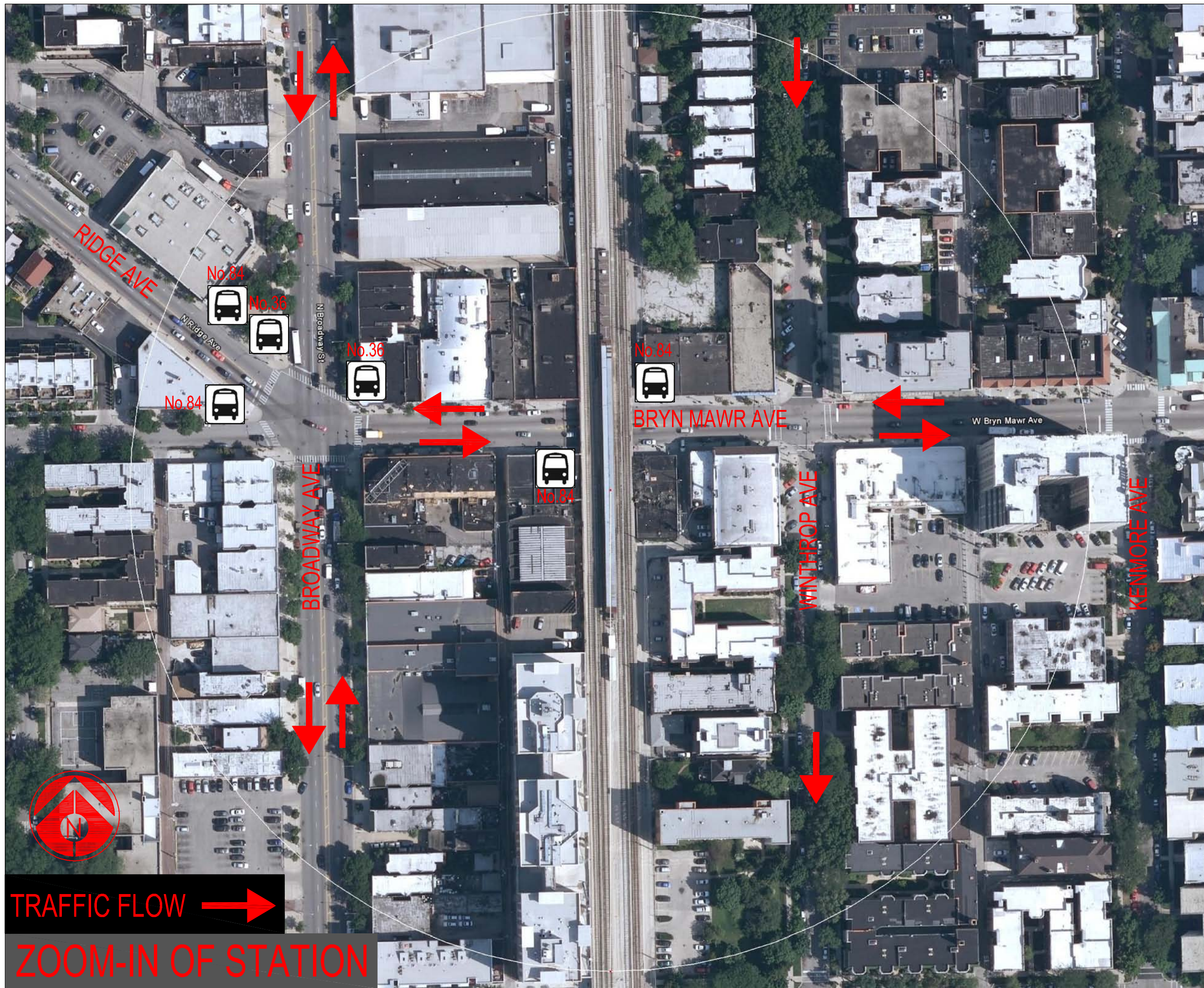


# STATIONS: BRYN MAWR



## BRYN MAWR STATION

Ridership: 4740/weekday  
Initially Constructed: 1921  
Rehabilitation: 1974  
Platform Width: 12'







# STATIONS: BERWYN



## BERWYN STATION

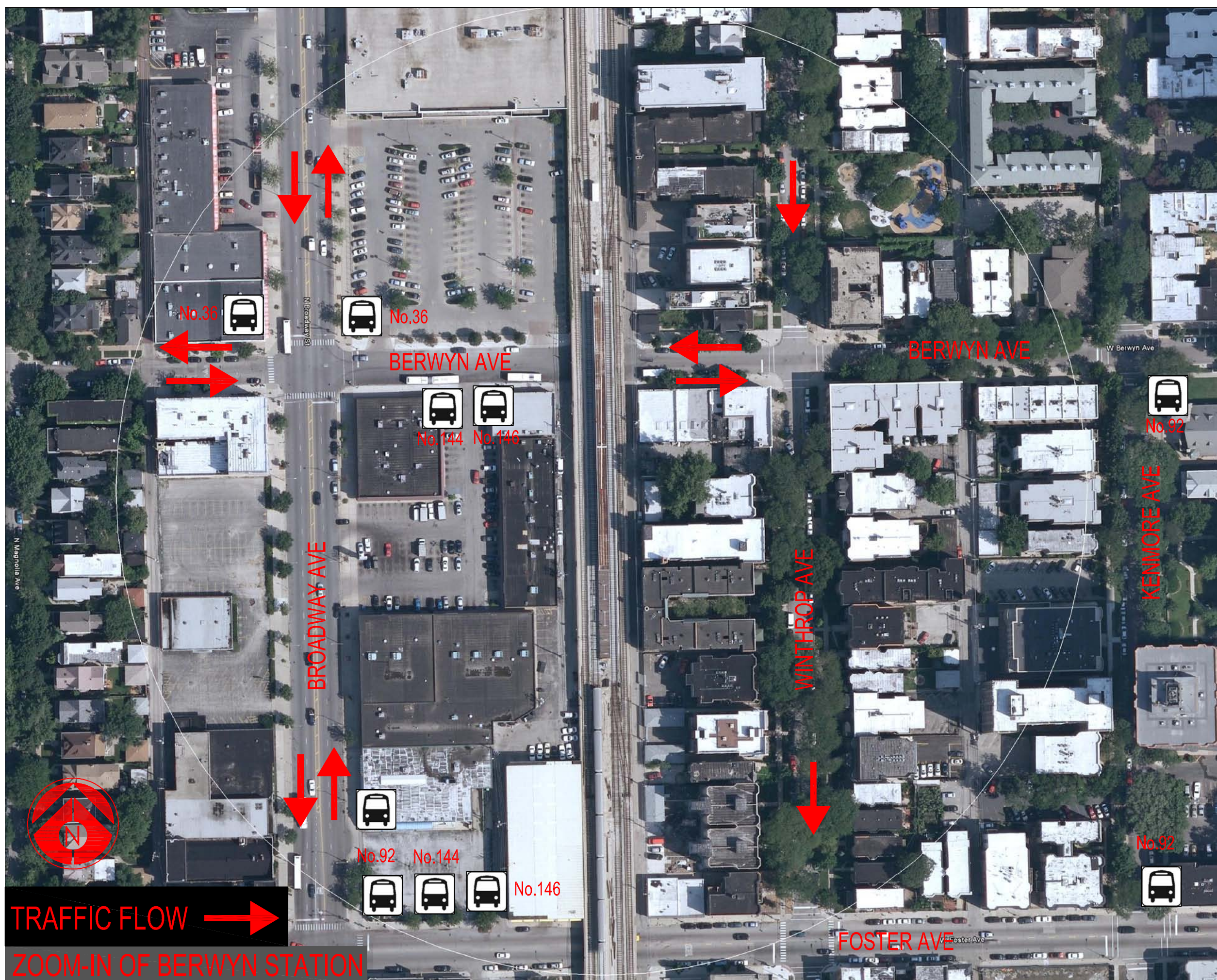
Ridership: 3400/weekday

Initially Constructed: 1921

Platform Width: 12'



STATION AND VIADUCT



TRAFFIC FLOW  
ZOOM-IN OF BERWYN STATION



VIADUCT



STRUCTURE



STATION AND VIADUCT



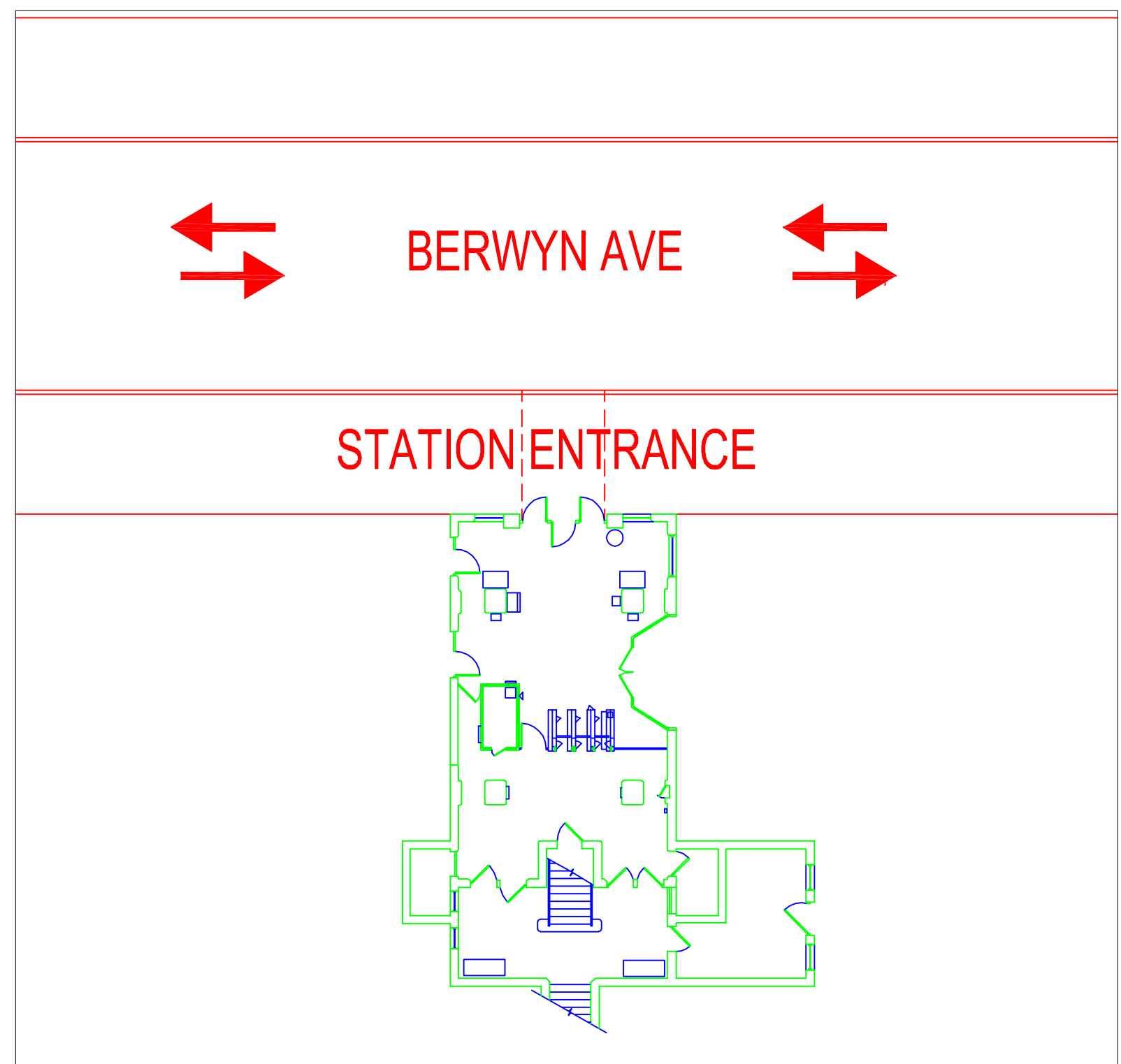
STATION AND VIADUCT



SOUTH BOUND TRACK



VIADUCT



STATION FLOOR PLAN

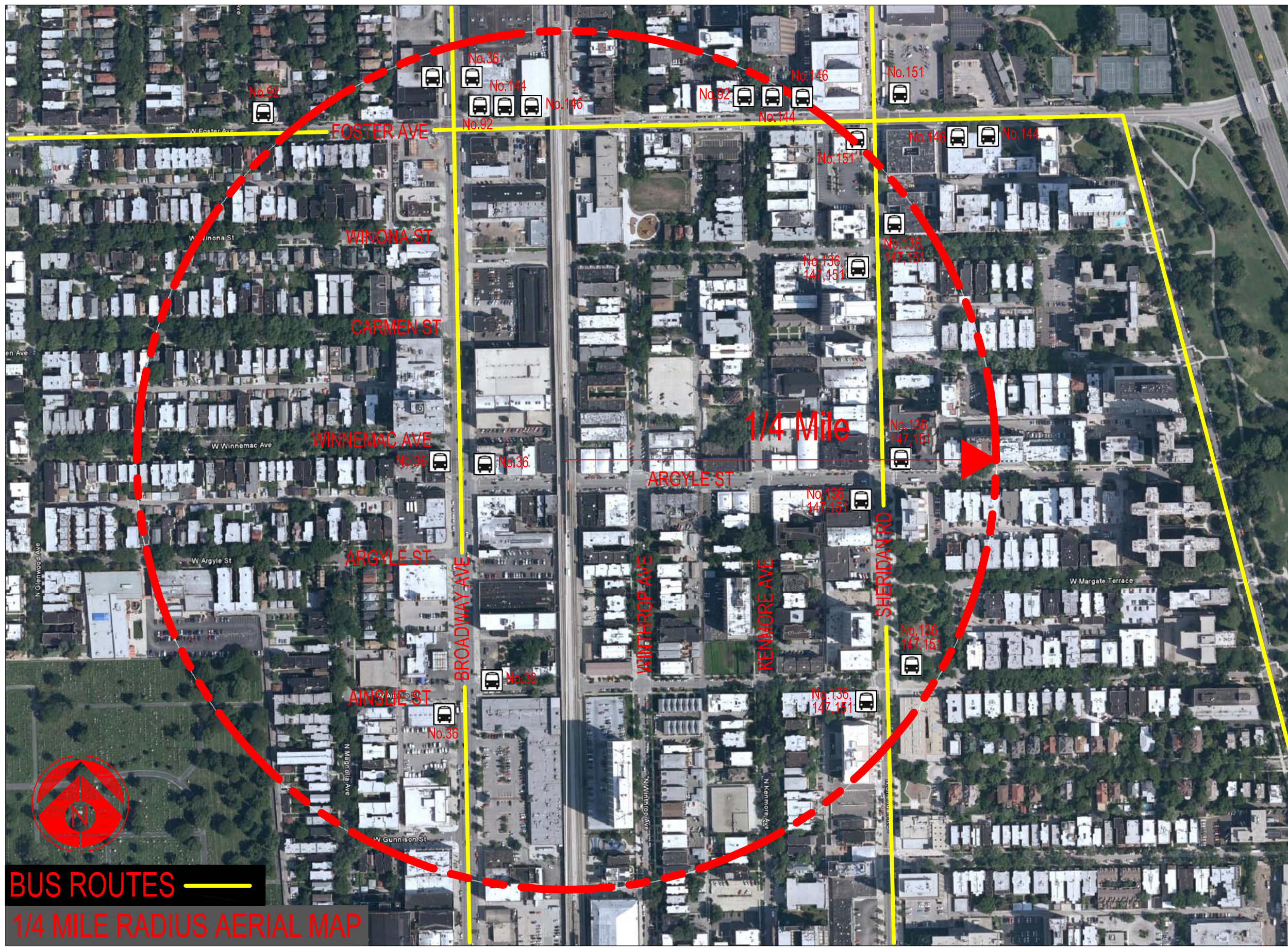
0 8' 16' 32'  
SCALE: 1/16" = 1'-0"







# STATIONS: ARGYLE



BUS ROUTES  
1/4 MILE RADIUS AERIAL MAP

## ARGYLE STATION

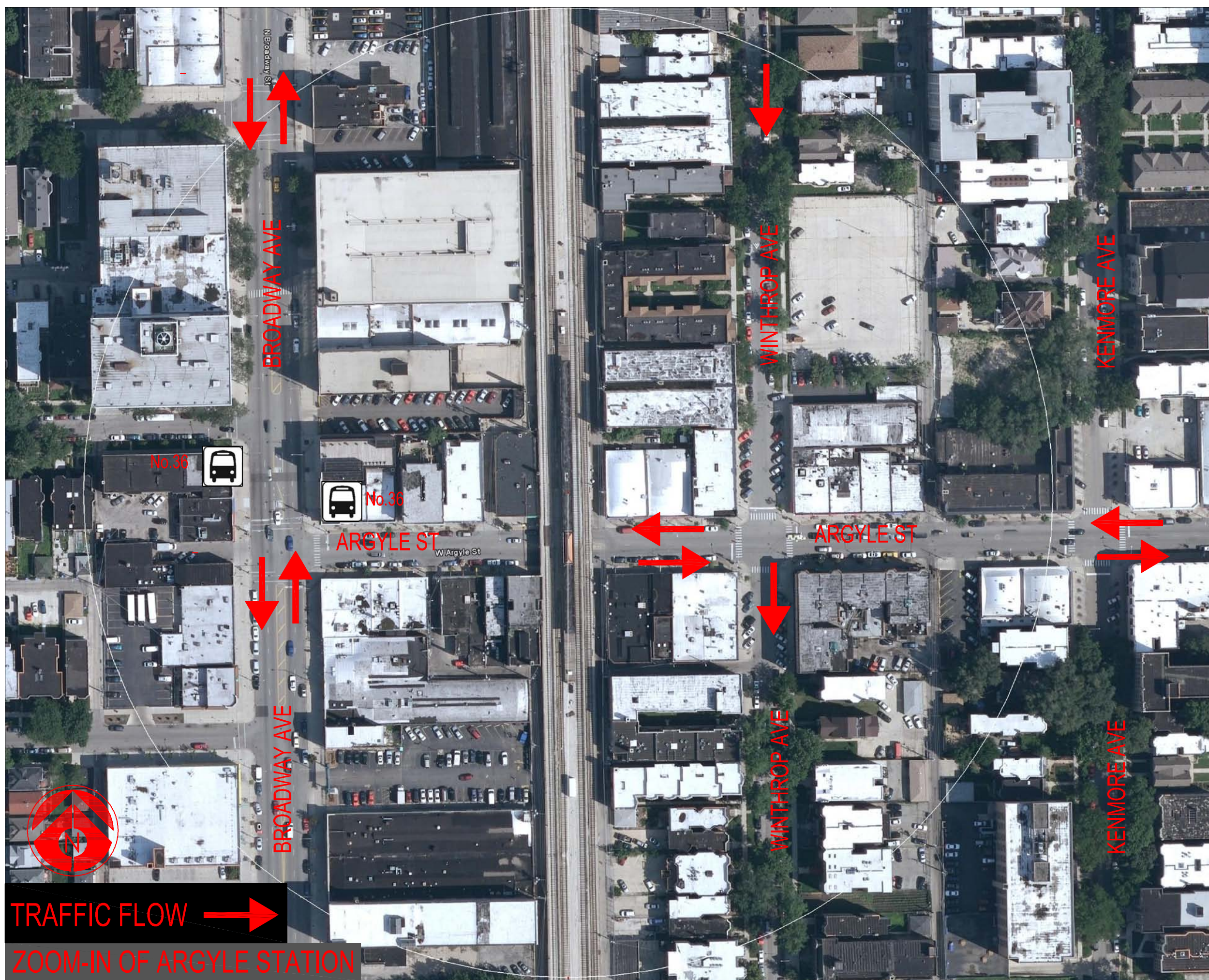
Ridership: 2690/weekday

Initially Constructed: 1921

Platform Width: 12'



STATION AND VIADUCT



TRAFFIC FLOW  
ZOOM-IN OF ARGYLE STATION



VIADUCT



VIADUCT



VIADUCT



STATION AND VIADUCT



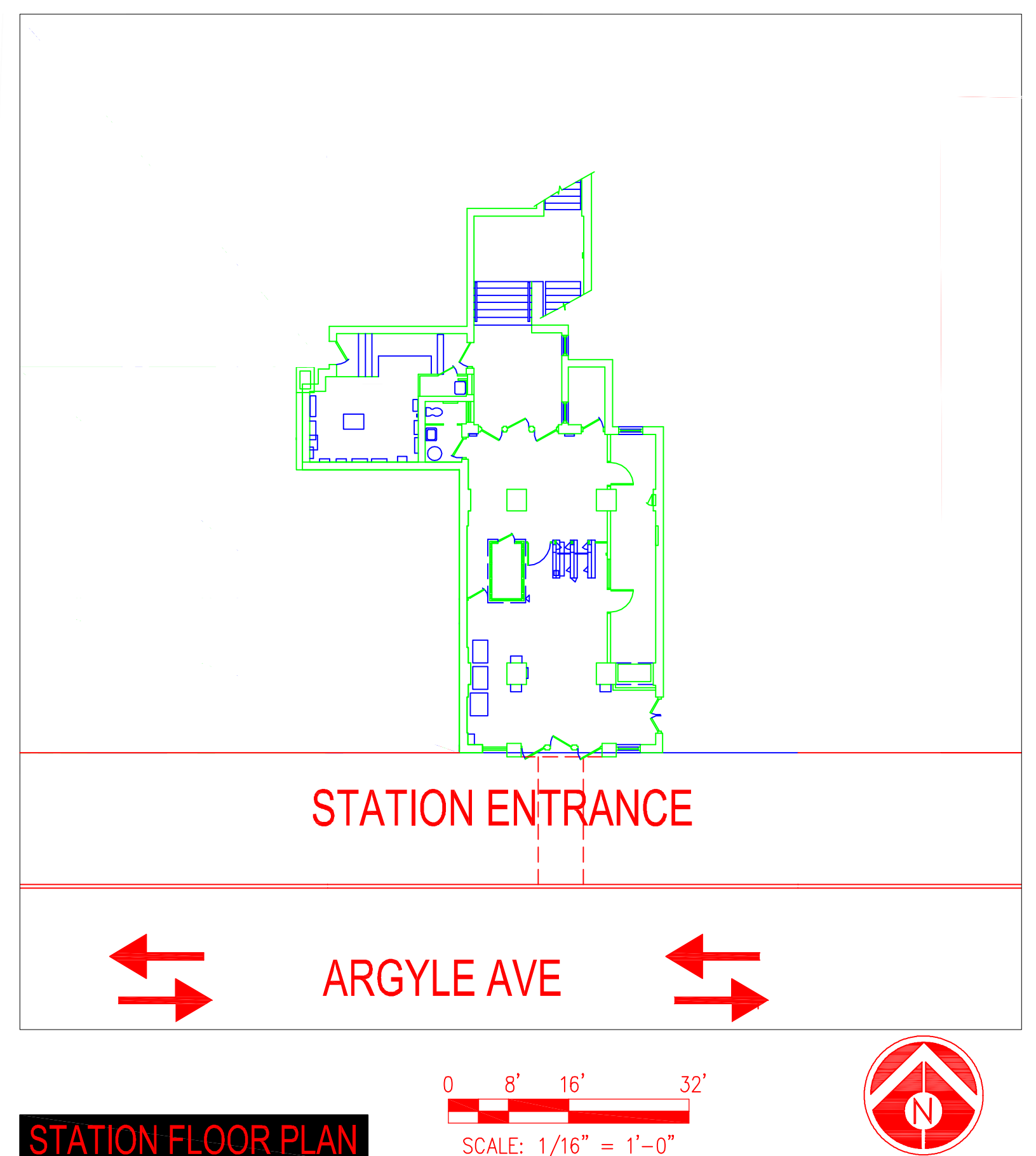
VIADUCT



PLATFORM



INSIDE THE STATION

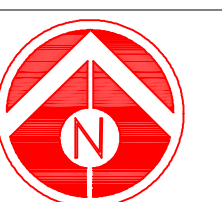


STATION ENTRANCE

ARGYLE AVE

STATION FLOOR PLAN

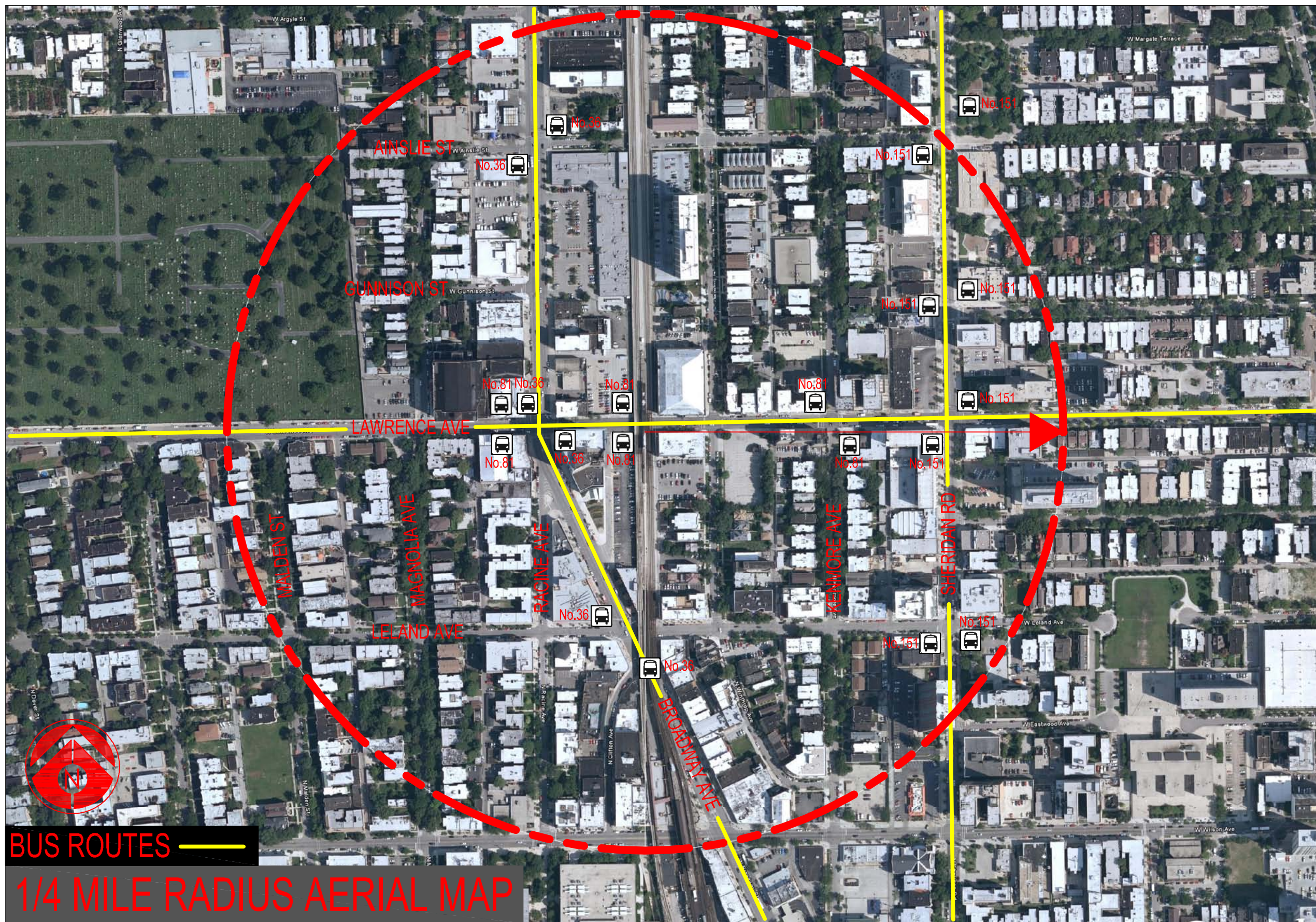
0 8' 16' 32'  
SCALE: 1/16" = 1'-0"





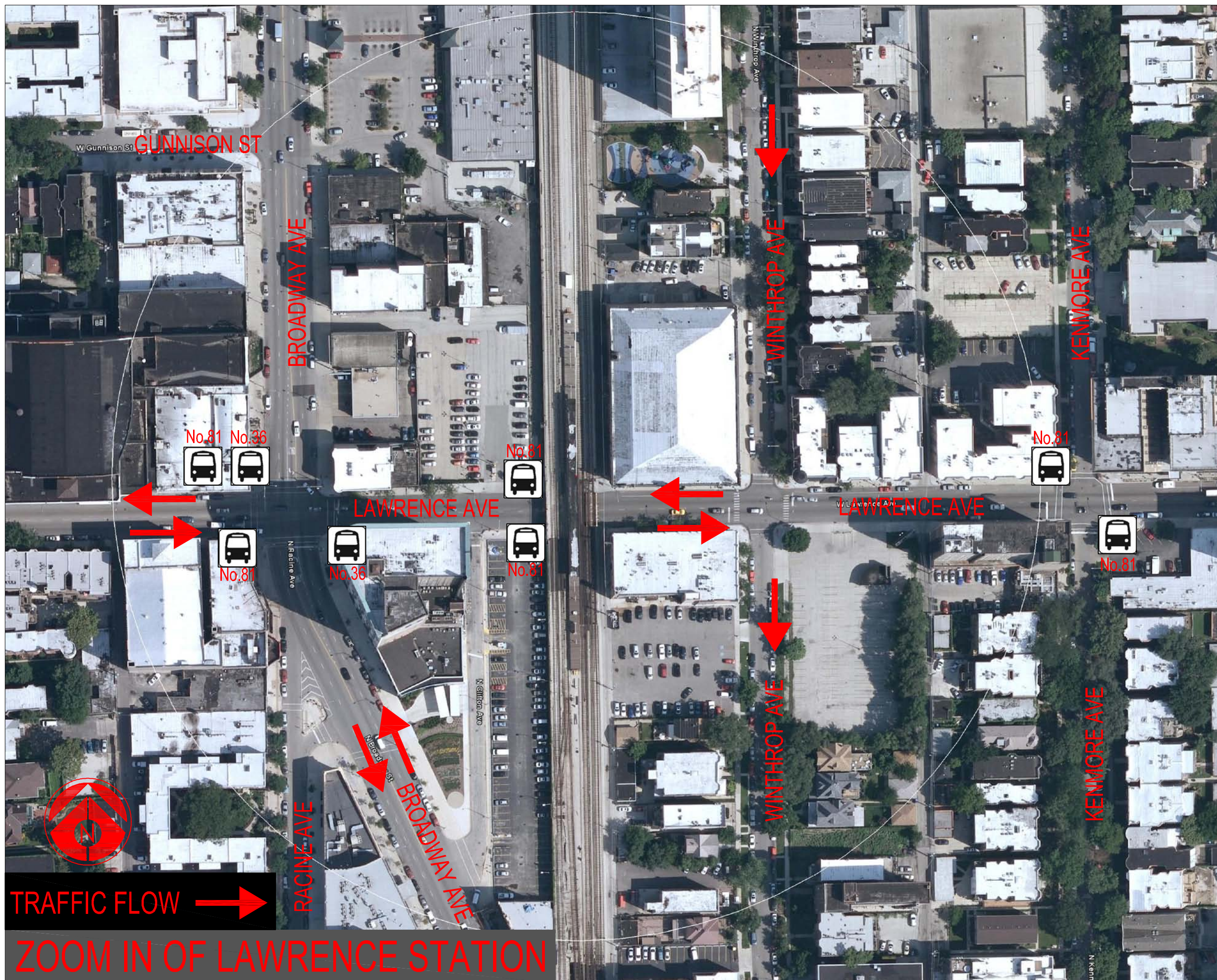


# STATIONS: LAWRENCE



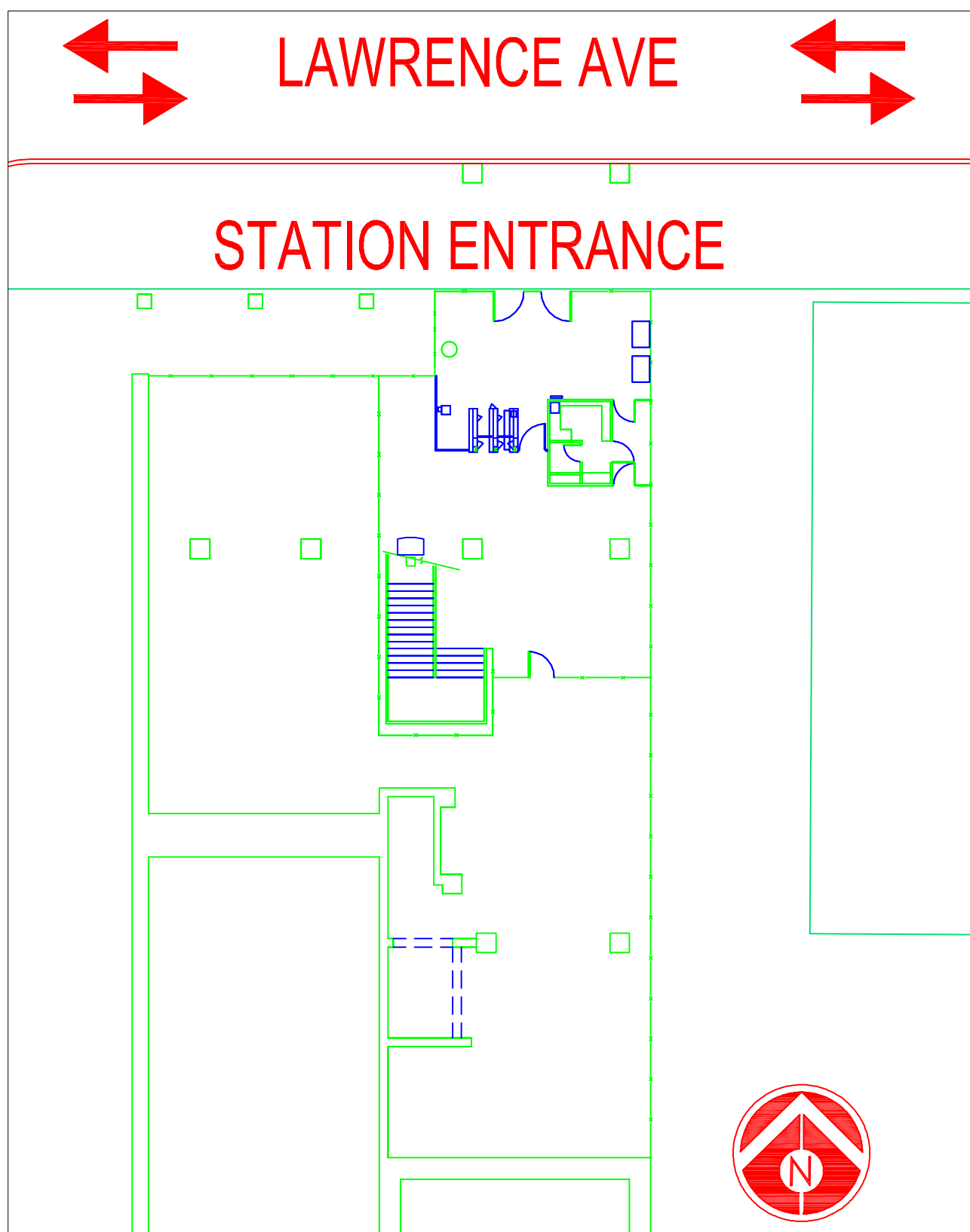
BUS ROUTES

1/4 MILE RADIUS AERIAL MAP



TRAFFIC FLOW

ZOOM IN OF LAWRENCE STATION



STATION FLOOR PLAN

0 8' 16' 32'  
SCALE: 1/16" = 1'-0"



STATION AND VIADUCT



STATION AND VIADUCT

## LAWRENCE STATION

Ridership: 3450/weekday

Initially Constructed: 1921

Rehabilitation: 1995

Platform Width: 12'



VIADUCT



STATION AND VIADUCT



PLATFORM



INSIDE THE STATION

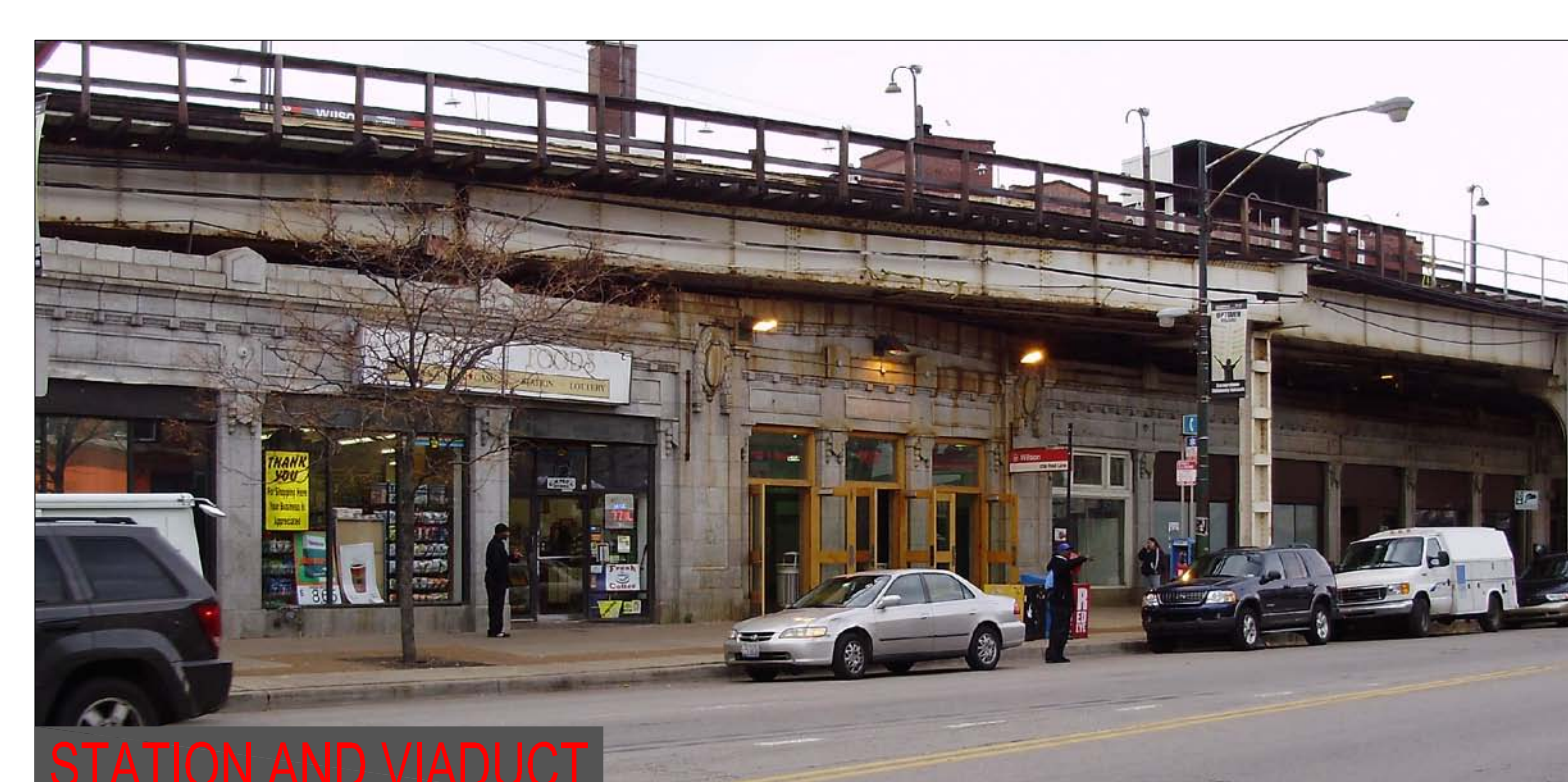
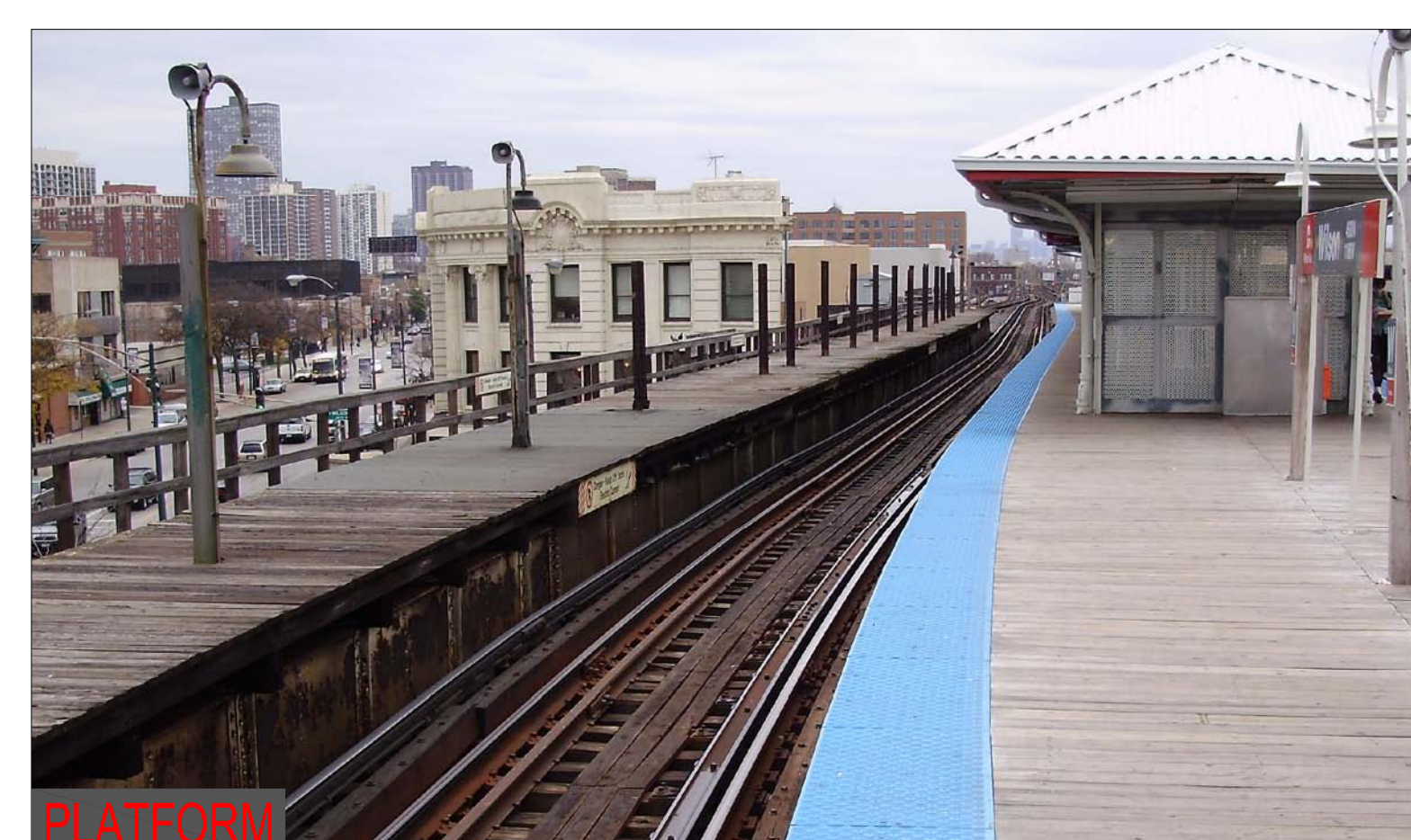




Ridership: 6530/weekday  
Initially Constructed: 1923  
Historic Station: Eligible for National  
Historic Register  
Platform Width: 9'-18'

Historic Station: Eligible for National  
Historic Register

Platform Width: 9'-18'







Initially Constructed: 1924

Platform Width: 5'-13'

