



Construction Project Briefing



March 11, 2026



Today's Presentation

Mega Projects

- Red Line Extension Project (RLE)
- Red and Purple Modernization Project – (RPM)

Service Reliability & State of Good Repair

- Traction Power Upgrades - Canal Tie House, Barry and Damen Substations
- O'Hare Line Harlem Station Bus Bridge Reconstruction

All Stations Accessibility Program – (ASAP)

- State/Lake Improvement and Upgrade Project
- Lake Line Austin Station Project
- Racine Station ADA & Traction Power Improvement Project

Customer Facing Investments

- Western Brown Line Station Improvements



Project Title: RLE Project Overview

Justification of Need: Chicago's most traveled rail line with millions of rides each year, the Red Line carries over 30 the CTA's rail customers and is one of a handful of U.S. transit lines that run 24/7. Extending Red Line to 130th Street provides a longed and much needed connection to jobs, education and commerce, while also serving as a catalyst for economic development.

Priority of Project:	High
Total Project Budget:	\$5.75B
Construction Contract Value:	\$2,944,400,001 Awarded (DBC, Adv Demo WOs, AUR WOs) \$635,966,934 Pending Award
Earned to Date:	15% (of awarded contracts as of December 2025)
Percent Change Orders to Construction Contract:	0%
Percent Time Used:	21% (of awarded contracts as of December 2025)
Funding Source:	FTA New Starts, CTA Bonds, Tax Increment Financing (TIF), Rebuild IL, Congestion Mitigation & Air Quality Improvement Program (CMAQ), Carbon Reduction Program (CRP)
Estimated Start Date/Estimated Length of Project:	2025 - 2030
Designer of Record:	TY Lin
Construction Manager/General Contractor:	Mainline / Yard & Shop Construction Manager – REDefine Southside Partners (RSP) Advance Work Construction Manager – SQN Associates, LLC



Project Title: RLE Program Overview

Impact on Customers:	RLE provides a new, more direct connection to the Red Line – up to 30 minutes time savings to riders traveling from the future 130th Street station to the Loop and will facilitate easier access to multiple CTA rail lines and bus routes.
Benefit to System:	RLE is an investment that will result in strength and vitality for communities in the RLE area, benefits that will extend to the entire city.
Benefit to Community:	RLE will help Far South Side residents reliably access jobs and opportunities outside their neighborhoods, which includes jobs within communities along the RLE footprint and throughout the region.
Impact on Accessibility:	N/A
Customer Communication Need:	Construction Activity Notices

Comparable Projects:

RPM Phase One



Project Title: RLE Advance Demolition

Justification of Need:	Demolition Work Orders: Two Complex and Two Ordinary Work Order Contractors bidding building demolition and environmental remediation at 85 parcels to facilitate future RLE Construction.
Priority of Project:	High
Total Project Budget:	Additional support costs as part of RLE \$5.75B project budget
Construction Contract Value:	\$14,527,311 Contracted to Date
Earned to Date:	68% (As of December 2025)
Percent Change Orders to Construction Contract:	-0.5%
Percent Time Used:	60% (December 2025)
DBE:	All Work Orders to date have met or exceeded the DBE goal (30%)
Estimated Start Date/Estimated Length of Project:	NTP: 10/02/2024 Planned Substantial Completion: 09/12/2026
Designer of Record:	Epstein, Altus Works
Construction Manager/General Contractor:	Taza Construction, Foundation Mechanics, John Burns Construction and Kiewit Construction
Detailed Overview of Scope:	Demolish properties needed for RLE ahead of structure and station construction.



Project Title: RLE Advance Demolition

Impact on Customers:	Periodic flagging activities while poles are being set/removed. Bus reroutes for street closures
Benefit to System:	Provides access to construct the Red Line Extension.
Benefit to Community:	Reduces risk and duration for the RLE Project.
Impact on Accessibility:	None
Customer Communication Need:	Construction Activity Notices will be provided to inform businesses and residents regarding temporary construction impacts (noise, dust, street/alley closures) throughout the advance work.

Comparable Projects:

RPM advance demolition contracts



Project Title: RLE- Advance Demolition

Progress Update

Phase	Description	Status
Design:	Advance Demolition Packages: Ordinary Work Orders Complex Work Orders	Ongoing Ongoing
Construction:	Advance Demolition: OWO-1: 4 parcels OWO-2: 2 parcels OWO-3: 12 parcels CWO-2: 33 parcels CWO-3: 5 parcels *CWO-4: 6 parcels *CWO-5: 2 parcels *Pending additional soil and UST removal work	100% complete as of September 2025 100% complete as of September 2025 100% complete as of September 2025 98% complete as of January 2026 100% of base scope complete as of January 2026 100% of base scope complete as of January 2026 35% complete as of January 2026
Closeout:	Closeout activities to start upon achieving 50% completion on work order.	Ongoing



Project Title: RLE Advance Demolition



Tree Removal



Project Title: RLE Advance Demolition



**Ongoing
Demolition**



Project Title: RLE Design Build Contract

Walsh VINCI Transit Community Partners will design and build the 5.5 mile extension of the Red Line from 95th Street to 130th Street, including four new fully accessible stations. RLE marks one of the largest investments on the Far South Side in decades and is a critical investment for CTA to expand its rapid transit network.

Justification of Need:

Priority of Project:	High
Total Project Budget:	\$5.75B
Construction Contract Value:	\$2,926,510,885
Earned to Date:	15% (As of December 2025)
Percent Change Orders to Construction Contract:	0%
Percent Time Used:	21% (December 2025)
DBE:	Design Goal 25% Construction Goal 22%
Funding Sources:	FTA New Starts, CTA Bonds, Tax Increment Financing (TIF), Rebuild, IL, Congestion Mitigation & Air Quality Improvement Program (CMAQ 1), Carbon Reduction Program (CRP)
Estimated Start Date/Estimated Length of Project:	LNTP:10/15/24, NTP 1/13/25 / Construction Start Date: Spring 2026 / Est. Completion 2030
Designer of Record:	Walsh Vinci Transit Community Partners (WVTCP) / Systra-EXP JV
Construction Manager	REDefine Southside Partners (RSP)
Detailed Overview of Scope:	5.5 miles of new track extending the Red Line from 95 th Street to 130 th Street Four new stations – 103 rd Street, 111 th Street, Michigan Avenue and 103 rd Street

Progress Update

Phase	Description	Status
Design:	<ul style="list-style-type: none"> • Design Progress Meetings: <ul style="list-style-type: none"> ○ Civil Task Force ○ Structures Task Force ○ Systems Task Force ○ Stations Task Force • Intermediate Designs for Stations • Final Design of Various Geotechnical Reports • Adjacent Contracts Interface Coordination • Segments 1 & 2 Tree Removal • Issued for Construction Tree Removal – Segments 3, 4 & 5 • Utility, Railroad and Third-Party Coordination 	<p>Ongoing</p> <p>Ongoing</p> <p>Ongoing</p> <p>Ongoing</p> <p>Completed</p> <p>Ongoing</p>
Pre-construction	<ul style="list-style-type: none"> • Pre-Construction Progress Meetings • DBC Procuring Subcontractor Services: <ul style="list-style-type: none"> ○ 3rd Party QC Inspections ○ 3rd Party Testing 	<p>Ongoing</p> <p>Ongoing</p>



Project Title: RLE Design Build Contract



Utility Locating



Project Title: RLEDesign Build Contract



**Tree
Removal
Shaping
the
Corridor**



RLE Community Outreach



RLE Outreach team members greet the public during Mobile Office Hours at Woodson Library and the 95th Street Corridor Plan One-Year Anniversary Celebration event, respectively.



RLE Community Outreach



Students from DePaul University's MBA program join the RLE Outreach team and community members to tour Roseland's historic Michigan Ave. shopping district and discuss the impact the Extension could have on its revitalization efforts.





RLE Highlighted Events

5 th District Faith-Based Subcommittee Monthly Meeting	Jan 8
RLE Mobile Office Hours, Altgeld Gardens Library	Jan 13
RLE Mobile Office Hours, West Pullman Library	Jan 21
RLE Mobile Office Hours, Woodson Regional Library	Jan 29
RLE Mobile Office Hours, Kroc Center	Feb 3
CTA Workforce Winter Outreach Event	Feb 4
95 th Street Corridor Plan One-Year Anniversary Celebration event	Feb 5
DePaul University Tour of Roseland	Feb 6
CICS Prairie Community Leader's Breakfast	Feb 12
RLE Inside Track Alert, activity digital digest	Weekly
RLE Project "Hotline" response	Ongoing



Project Title: RLECommunity Office



Main Entrance Doors



Project Title: RLECommunity Office



Kitchenette Cabinet and Countertop Installation



Project Title: RPM Phase One Design-Build Contract

Justification of Need:	The RPM Phase One Project is greatly needed in order to expand capacity on CTA's most utilized rail line and to replace aging infrastructure.	
Priority of Project:	High	
Total Project Budget:	\$ 2.1 Billion (excludes Transit TIF interest payments)	
Construction Contract Value:	Original - \$1,272,275,929 Current - \$1,424,121,704 (through Change Order 10)	
Earned to Date:	94.3%	
Percent Change Orders to Construction Contract:	11.9%	
Percent Time Used:	89.4%	
DBE:	Design: Goal: 20% / Commitment: 20.64% Construction Goal: 20% / Commitment: 20% Workforce Goals: 10% WIOA / 15% Apprentice / 35% EDA	Contractor is on track to meet the DBE goal
Funding Source:	CTA Financing, FTA Core Capacity Grant, CMAQ, TIFs	
NTP / Construction Start / Estimated Completion:	February 8, 2019 / October 2019 / December 2026	
Design-Build Contractor:	Walsh-Fluor Design-Build Team	
Owners Representative:	Elevated Solutions Partners	
Detailed Overview of Scope:	RPM Phase One consists of the following elements that will allow CTA to expand service along the Red and Purple lines:	
	<ul style="list-style-type: none"> • Lawrence to Bryn Mawr Modernization (LBMM) – complete reconstruction and addition of ADA accessibility at four Red Line stations (Lawrence, Argyle, Berwyn, and Bryn Mawr) and reconstruction of 6 miles of track, structures, and viaducts from Leland Ave. to Ardmore Ave. • Red-Purple Bypass (RPB) - Construction of a grade-separated bypass for the Brown Line at Clark Junction, just north of Belmont Ave. Includes realignment and reconstruction of 1.4 miles of mainline tracks and structure between Belmont station and south of Cornelia Ave. • Corridor Signal Improvements (CSI) – Installation of new higher-capacity signal system on 23 miles of track between Belmont and Howard stations. 	



Project Title:RPM Phase One Design-Build Contract

Phase	Description	Status
Administrative / Design:	<ul style="list-style-type: none"> ▪ Continued submittal/revisions of required management plans ▪ Continued Design Development in support of Signal Improvements 	<p>Ongoing Ongoing</p>
Construction:	<ul style="list-style-type: none"> ▪ Red-Purple Bypass (RPB) <ul style="list-style-type: none"> – Street, alleyway and lot reconstruction – Removals of decommissioned systems cabling from previous RPB phases – NM and Flyover Drip Pan Installation. – Permanent zip tying of finalized signal cable bundles – Removal of decommissioned cabling near former Addison Interlocking ▪ Lawrence to Bryn Mawr Modernization (LBMM) <ul style="list-style-type: none"> – Bryn Mawr and Hollywood Aux Station <ul style="list-style-type: none"> – Punchlist Work – Berwyn and Aux Station <ul style="list-style-type: none"> – Punchlist Work – Argyle Station <ul style="list-style-type: none"> – Punchlist Work – Lawrence Station <ul style="list-style-type: none"> – Punchlist Work – Street and alleyway reconstruction – Structure sealer and anti-graffiti application – Site fencing installation – Landscaping – Substantial Completion walks for the entire project – Additional stray current testing throughout LBMM for structural elements, track, and signal equipment ▪ Corridor Signal Improvements (CSI) <ul style="list-style-type: none"> – Perform signal system punchlist activities in the RPB area including removal of decommissioned cable – Continue to complete all required signal system tests in the LBMM area – Upgraded controls and indications at the Clark Tower local control panel – Installation of new signal racks and wayside signal equipment in the Jarvis Relay Room limits – Preparation for the three remaining signal cutovers at Jarvis Relay Room – Continued signal discrepancy resolution – Started testing indications on the Signal Maintenance Workstations 	<p>Ongoing Ongoing Complete Complete Ongoing</p> <p>Ongoing</p> <p>Ongoing</p> <p>Ongoing</p> <p>Ongoing Ongoing Ongoing Upcoming Ongoing Upcoming</p> <p>Ongoing Ongoing Ongoing Ongoing Ongoing Ongoing Started</p>



Lawrence to Bryn Mawr Modernization



**CSI Jarvis
– Cable
Pull and
temp AF
800 bond
installation
for cutover**




Lawrence to Bryn Mawr Modernization



**Bond and
Bracket Work
Morse**



Project Title: RPM Phase One Design-Build Contract

Community Outreach	Major Activities	Timing
	<ul style="list-style-type: none">• Weekly Red-Purple Bypass Project updates for 44th ward• Lawrence to Bryn Mawr project updates for 46th, 48th wards• RPM receives Infrastructure Project of the Year award from CISCO• IL State Senate 7th District event at Clarendon Park Fieldhouse• Uptown United/Uptown Chamber of Commerce – Argyle Lunar New Year Parade	<p>Weekly</p> <p>Bi-weekly</p> <p>Feb. 6</p> <p>Feb. 12</p> <p>Feb. 21</p>
<p>CTA Acting President Nora Leerhsen, and the RPM team accepted the CISCO Infrastructure Project of the Year Award on Feb. 6.</p>		



Project Title: Traction Power Upgrade Canal Tie House, Barry and Damen Substations

The CTA has identified additional traction power demands based on results from the Blue Line Load Flow Study and determined that three (3) areas along the blue line O'Hare branch and Dearborn subway may experience problems with running the new fleet at the service levels proposed. To continue providing a reliable and efficient service, it is necessary to build two (2) new traction power substations, one at Barry and the other at Damen. This project includes the replacement of all traction power equipment at the Haymarket station and all their infrastructure support along with installing a new Tie Breaker house in the Dearborn subway. This project includes the replacement of all traction power equipment at the Haymarket station

Justification of Need:

Priority of Project:	High
Total Project Budget:	\$111 Million
Construction Contract Value:	\$70.1 Million
Earned to Date:	\$62.6M or 89.4% (As of November)
Percent Change Orders to Construction Contract:	16.7%
Percent Time Used:	123% (As of January)
DBE:	Goal: 25% Commitment: 25.3% Workforce Goals: 10% Career Opportunity/ 8% Apprentice/ 25% EDA Contract is on track to meet the DBE goal
Funding Source:	CTA Bonds / Rebuild Illinois
Estimated Start Date/Estimated Length of Project:	NTP: October 20, 2021, Contract Substantial Completion March 31, 2025/Estimated Substantial Completion March 20, 2026
Designer of Record:	TYLin
Construction Manager/General Contractor:	WSP / John Burns Construction



Project Title: Traction Power Upgrade Canal Tie House, Barry and Damen Substations

Impact on Customers:	Minor service disruptions during track access occurrences.
Benefit to System:	The new Traction Power Substation will increase service reliability to the Blue Line.
Benefit to Community:	New buildings will enhance and will blend with the surrounding community and will benefit transit riders in the Blue Line with a safer and more reliable service.
Impact on Accessibility:	N/A
Customer Communication Need:	Construction Activity Notices.

Comparable Projects:
East Lake, Milwaukee & Illinois (ELMI) and Broadway substations



Project Title: Traction Power Upgrade Canal Tie House, Barry and Damen Substations

Construction Progress

Phase	Description	Status
Haymarket Substation	<ul style="list-style-type: none">• Punchlist work	Ongoing
Canal Tie-House	<ul style="list-style-type: none">• Commission Tie-House• Interior Tie-House Build-Out• Cable connections to Tie-House• Punchlist work	Complete Complete Complete Ongoing
Damen Substation	<ul style="list-style-type: none">• Build building interior, flooring, rooms and finishes• Damen Exterior and Plaza installation	Complete Ongoing
Barry Substation	<ul style="list-style-type: none">• Installing substation Traction Power Equipment.• Build exterior walls and roof.• Build building interior, flooring, rooms and finishes• Testing and Commissioning of Traction Power Equipment	Ongoing Ongoing Ongoing Ongoing
Belmont Crossover	<ul style="list-style-type: none">• Punchlist work.	Ongoing



Project Title: Traction Power Upgrade Canal Tie House, Barry and Damen Substations



Barry Curtain Wall Installation



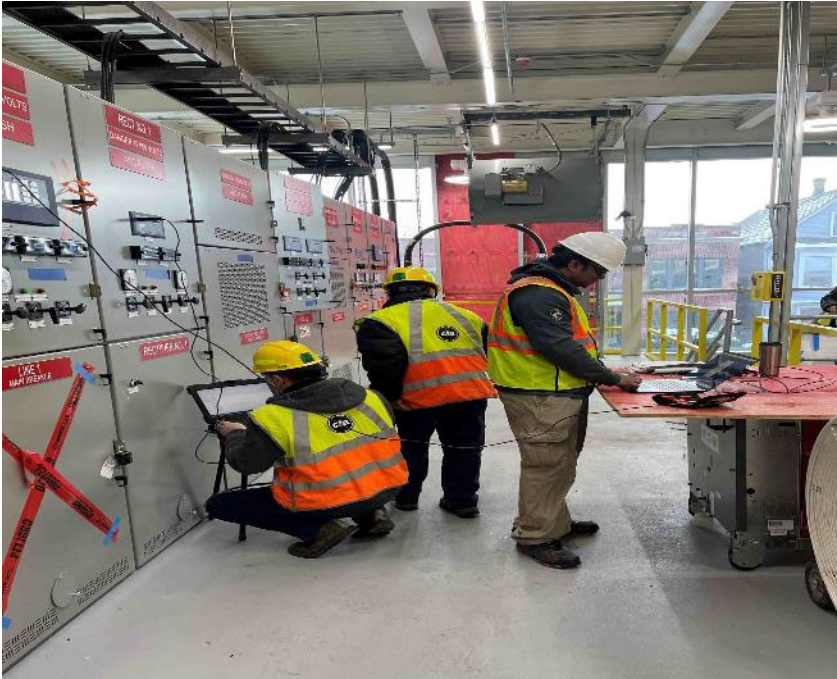
Project Title: Traction Power Upgrade Canal Tie House, Barry and Damen Substations



Barry Curtain Wall Installation



Project Title: Traction Power Upgrade Canal Tie House, Barry and Damen Substations



Rectifier Testing at Barry



Project Title: Traction Power Upgrade Canal Tie House, Barry and Damen Substations



Backup Battery Installation at Damen



Project Title: Traction Power Upgrade Canal Tie House, Barry and Damen Substations



Backup Battery Installation at Damen



Project Title: O’Hare Line Harlem Station Bus Bridge Reconstruction

Justification of Need: The condition of the Harlem Station bus bridge was initially identified as an infrastructure issue in 2013. At that time, CTA noted significant deterioration to the concrete deck, concrete and structural steel support elements due to salt corrosion and water infiltration. More recently, critical defects caused by concrete deck expansion joint failure have been identified in the south pier. The bridge needs to be replaced before it becomes a safety hazard and has been taken out of service.

Priority of Project:	Medium
Total Project Budget:	\$30.8 M
Construction Contract Value:	\$20.4 M
Earned to Date:	\$14.8 M or 72.7% (as of November 2025)
Percent Change Orders to Construction Contract:	0
Percent Time Used:	131%*
DBE:	DBE goal: 25%. DBE Firms: MW Powell, Highway Safety Corp., Argo Construction LLC, Vision Painting, Alpine Demolition, W.E.B. Production & Fabricating, AC Iron LLC, S & J Construction, Livewire Electrical Systems.
Funding Sources:	Rebuild Illinois, Federal 2020, Federal 2016, Surface Transportation Program (CMAP)s
Estimated Start Date/Estimated Length of Project:	GC NTP: September 5, 2023. Substantial Completion: March 8, 2025 (NTP + 550 days)
Designer of Record:	HNTB
Construction Manager/General Contractor:	CM: TranSystems/TY Lin JV. GC: John Burns Construction Company.

*Additional time will be provided through change order.



Project Title: O'Hare Line Harlem Station Bus Bridge Reconstruction

Impact on Customers:	Minor changes in bus service and Park & Ride access for those who use the Harlem Blue Line Station on the O'Hare Branch. Rail service will not be impacted.
Benefit to System:	New bridge superstructure and interface between bridge and station, new concrete approaches, bridge deck, ADA-compliant curbs and sidewalks, new canopy on bridge. New bus operator bathroom facility, painting, improved drainage.
Benefit to Community:	Replacement of the bridge before it becomes unsafe will help ensure continuity of service on bus routes out of the O'Hare Line Harlem Station.
Impact on Accessibility:	New ADA-compliant curbs and sidewalks for improved accessibility.
Customer Communication Need:	Construction Activity Notices, coordination with Alderman, press releases.

Comparable Projects:

Montrose Bridge Replacement (IDOT).



Project Title: O'Hare Line Harlem Station Bus Bridge Improvements

Construction Progress

Phase	Description	Status
Construction	• North Bridge Approach	Completed
	• South Bridge Approach	Completed
	• Bus Canopy Roofing	Completed
	• South Sidewalk	On-Going
	• Bus Canopy Comm and Electric	On-Going
	• Bus Bathroom	On-Going
	• Rebuild Wind Breaks	On-Going
	• Directional Bore for Water	Mid March
	• Reopen Bridge	Mid March



Project Title: O'Hare Line Harlem Station Bus Bridge Reconstruction



Removing Window Wash Rail from Station



Project Title: O'Hare Line Harlem Station Bus Bridge Reconstruction



Final Grading Around Bus Washroom



Project Title: O'Hare Line Harlem Station Bus Bridge Reconstruction



Demolition of Pavement at Harlem



Project Title: O'Hare Line Harlem Station Bus Bridge Reconstruction



Wiring Lights at Bus Canopy



Project Title: O'Hare Line Harlem Station Bus Bridge Reconstruction



Roofing Membrane at Bus Canopy



Project Title: All Stations Accessibility Program

Justification of Need:

The CTA is committed to making its system completely accessible to people with disabilities in the next 20 years by becoming the first legacy transit system to make all of its train stations accessible.

Priority of Project:	High
Total Program Budget:	\$4.9 Billion
Total Funded Value:	\$740.8 Million
Under Contract:	% (As of November 2024)
Total Number of Stations Currently Accessible	104 (71%)
Total Number of Stations Currently Programmed for Upgrades	14 (81%)
Total Number of Elevators Programmed for Rehab	16 of 173
Estimated Start Date/Estimated Length of Project:	Phase 1: 2023-2027, Phase 2 (Funded): 2026-2028



Project Title: All Stations Accessibility Program

Funded Program Progress

Phase	Description	Status
Construction	Funded Station Projects	
	Lawrence (Red Line)	Completed
	Argyle (Red Line)	Completed
	Berwyn (Red Line)	Completed
	Bryn Mawr (Red Line)	Completed
	Racine (Blue Line)	On-going
	Austin (Green Line)	On-going
State/Lake (Loop)	Beginning	
Design	Funded Design Projects	
	California (Blue Line)	Complete
	Montrose (Blue Line)	On-going
	16 Elevator Rehabs	On-going
	Belmont (Blue Line)	Beginning
	Irving Park (Blue Line)	Beginning
	Pulaski (Blue Line)	Planning/Environmental
	Oak Park (Green Line)	Planning/Environmental
Ridgeland (Green Line)	Planning/Environmental	



Project Title: CDQ Loop Line State and Lake Station Redesign

Justification of Need:

The scope of work for the State/Lake Station project includes the demolition and removal of existing facilities, as well as the installation and modification of structural, mechanical, and operational components necessary to support a fully functional transit station. Scope also includes vertical circulation elements, including elevators, stairs, and escalators, will be designed and constructed in full compliance with all current Americans with Disabilities Act (ADA).

Priority of Project:	High
Total Project Budget:	
Construction Contract Value:	444,732,400.00
Earned to Date:	64,040,762.30
Percent Change Orders to Construction Contract:	.09%
Percent Time Used:	24%
DBE:	DBE Participation Goal: 30% DBE Percentage to Date : 2.0273%
Funding Source:	Federal Transit Administration, CDOT
Estimated Start Date/Estimated Length of Project:	NTP: 4/09/2025, Project Duration:10/20/2028 (1290 Days after NTP Date)
Designer of Record:	GFT/ SOM (CDOT)
Construction Manager/General Contractor:	Burns and McDonald / F.H. Paschen (CDOT)



Project Title: CDOT Loop Line State and Lake Station Redesign

Impact on Customers:	<ul style="list-style-type: none">• State and Lake Elevated Station will be closed during construction• Free transfers at Clark and Lake and Washington/Wabash during elevated station closure• Lake Red Line Station will be closed for a period of 30 days. Access will remain at Randolph/Lake during closure• Service disruptions during multiple TAOs.
Benefit to System:	<ul style="list-style-type: none">• Project will make both State and Lake elevated and Lake subway stations fully ADA accessible• Project will create a new state of the art elevated station at State and Lake
Benefit to Community:	<ul style="list-style-type: none">• When completed, the project is expected to accommodate all the accessibility needs for riders traveling through the State and Lake elevated station and Lake Subway utilizing various mobility devices.
Impact on Accessibility:	<ul style="list-style-type: none">• This will be a fully accessible CTA station equipped with elevator access to both platforms and subway with accessible paths to the new station house
Customer Communication Need:	<ul style="list-style-type: none">• Customer and community outreach is being coordinated by CDOT• Construction activity notices will be distributed as needed.• Advanced service disruption signs and posters will be installed as needed

Comparable Projects:

Washington/Wabash Station



Construction Progress

Phase	Description	Status
Construction	<p>State and Lake Elevated Station:</p> <ul style="list-style-type: none"> • Demolition • Station Foundation Work • Track Structure and Bent Modifications • New Platform and Structure Installation • Canopy and Transfer Bridge Installation • Stairway Installation • Elevator Installation • Mechanical, Electric and Plumbing Installation • Architectural Finish Installation <p>Lake Subway Station:</p> <ul style="list-style-type: none"> • Open excavation • Elevator installation - Lake Street mezzanine Level • Elevator Installation – Lake Street street <p>Roadway Work</p> <ul style="list-style-type: none"> • New median installation south of Lake Street • Street modifications 	<p>Ongoing</p> <p>Planned</p> <p>Planned</p> <p>Planned</p> <p>Planned</p> <p>Planned</p> <p>Planned</p> <p>Planned</p> <p>Planned</p> <p>Planned</p> <p>Planned</p> <p>Planned</p> <p>Planned</p> <p>Planned</p> <p>Planned</p>

Delay Explanation:

N/A



Elevated Platform Demolition



Project Title: CDG Loop Line State and Lake Station Redesign



Elevated Station Canopy Demolition



Elevated Stationhouse Demolition



Project Title: All Stations Accessibility Program Lake Line Austin Station

Justification of Need: As part of our ongoing efforts to make the CTA system fully accessible to people with disabilities, improvements to the Lake Line Austin Station are essential. These upgrades ensure the station complies with current provisions of the Americans with Disabilities Act (ADA). The project will also enhance the state of good repair of the station house building envelope and provide an alternate means of egress for the existing Austin Station.

Priority of Project:	High
Total Project Budget:	\$25.5 M
Construction Contract Value:	\$15.6 M
Earned to Date:	\$8.1 M or 52% (as of October 2025)
Percent Change Orders to Construction Contract:	2%
Percent Time Used:	98% based on projected Substantial Completion February 4, 2026
DBE:	DBE goal: 30%. DBE Firms: Highway Safety Corporation, Metropolitan Steel, Anderson Shah Roofing, Pinto Construction Group, Smith Painting Services, Wolf Electrical, Phoenix Business Solutions, Araiza Corporation, and Chicago Area Plumbing and Mechanical.
Funding Sources:	Rebuild Illinois and Federal 2021
Actual Start Date/Estimated Length of Project:	GC NTP: December 29, 2023; Projected Substantial Completion: February 2, 2026 (NTP + 768 days)
Designer of Record:	Epstein
Construction Manager/General Contractor:	CM: SQN. GC: John Burns Construction.



Project Title: All Stations Accessibility Program Lake Line Austin Station

Impact on Customers:	There will be impact to CTA customers and surrounding community related to pedestrian and vehicular detours for utility replacements along Corcoran also CTA customers will be redirected to use temporary station entrance at Mason Ave. Platform closures and back rides will be necessary throughout construction.
Benefit to System:	System benefits include new elevator and elevator machine room, state of good repair improvements to the station house building envelope, new electrical room, new communications room, new janitor closet, new customer assistant kiosk and ADA compliant customer assistant restroom.
Benefit to Community:	Some Community benefits are the overall aesthetics of the Austin station will be improved. Increased station accessibility with the new elevator and associated ramps and sidewalk. Improved safety by reopening of the Auxiliary exit at Mason Ave. There will also be improvements to the streetscape.
Impact on Accessibility:	New ADA-compliant elevator, Auxiliary exit and sidewalks for improved accessibility.
Customer Communication Need:	Construction Activity Notices, GCR Coordination with City of Chicago Alderman, The Village of Oak Park and Website / Press releases.

Comparable Projects:

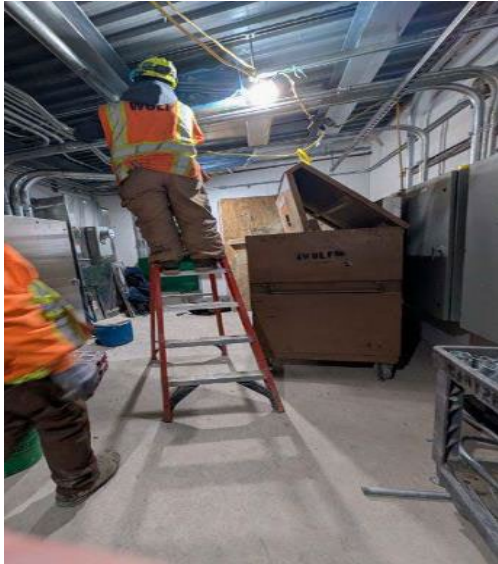
Lake Line – Oak Park and Ridgeland Stations



Project Title: All Stations Accessibility Program Line Austin Station



Completing Glazed Masonry and In-Progress Fascia Installation



Wiring Distribution Panels in Electrical Room



Project Title: All Stations Accessibility Program Lake Line Austin Station



Pouring Concrete Curbs and Flatwork



Project Title: Racine Station ADA & Traction Power Improvement Project

Justification of Need:

The existing Racine station is not accessible, and the ADA Improvements will add an elevator, and provide an ADA compliant ramp with adequate clearances for wheelchairs and mobility devices. In addition, to accommodate growth in ridership and maintain reliable service, the CTA procured newer generations of car fleets, which required traction power improvements consisting of constructing a new Morgan substation as well as upgrading existing traction power equipment within the Hermitage substation to meet high demands on the Forest Park branch of the Blueline.

Priority of Project:	High
Total Project Budget:	\$136,946,882
Construction Contract Value:	\$83,910,192
Earned to Date:	78.5 % (through December 2025)
Percent Change Orders to Construction Contract:	11%
Percent Time Used:	99% (through December 2025)
DBE:	Goal: 25% Commitment: 25% Workforce Goals: 10% Career Opportunity, 15% Apprentice, 25% EDA The contract is on track to meet the DBE goal
Funding Source:	IDOT - Rebuild Illinois
Estimated Start Date/Estimated Length of Project:	NTP: 5/12/2023, Project Duration: 965 days (NTP through Substantial Completion)
Designer of Record:	HNTB
Construction Manager/General Contractor:	Congress Corridor Partners, a JV between (WSP/Ardmore) / F.H. Paschen, S.N. Nielsen & Associates



Project Title: Racine Station ADA & Traction Power Improvement Project

Impact on Customers:	<ul style="list-style-type: none">• Minor service disruptions during 54hr weekend TAOs.• No rail service between IMD and UIC-Halsted stations during weekend linecuts.• The Racine station will be OOS during the weekend linecuts.• No access to Racine stationhouse from Racine street until completely rebuild, the Loomis stationhouse will remain in service during this time.• Local bus shuttles will be provided during weekend linecuts.
Benefit to System:	<ul style="list-style-type: none">• The project will make the Racine station fully accessible.• The project will add more power to boost reliability and meet service demands.• The project will reduce the Racine station and Hermitage substation maintenance needs.
Benefit to Community:	<ul style="list-style-type: none">• When completed, the project is expected to accommodate all the accessibility needs for riders traveling through the Racine station utilizing various mobility devices.
Impact on Accessibility:	<ul style="list-style-type: none">• YES
Customer Communication Need:	<ul style="list-style-type: none">• GCR outreach with surrounding stakeholders.• Construction activity notices will be distributed as needed.• Advanced service disruption signs and posters will be installed as needed.

Comparable Projects:

The Illinois Medical District (IMD) Station Improvements



Project Title: Racine Station ADA & Traction Power Improvement Project

Construction Progress

Phase	Description	Status
Construction	<p>Racine Stationhouse Entrance:</p> <ul style="list-style-type: none"> • Structure & shell • Main stairs and elevator • Bridge level interiors • Electrical and mechanical rooms • Electrical and sanitary underground services <p>Racine Platform New Concourse Extension:</p> <ul style="list-style-type: none"> • Structure & shell • MEP and communication systems <p>Racine Platform and Canopy:</p> <ul style="list-style-type: none"> • Canopy demolition and restoration • MEP and communication systems <p>Loomis Stationhouse Entrance:</p> <ul style="list-style-type: none"> • Demolition of existing stationhouse, ramp and columns • Rebuild New Structure & Shell • Bridge Level Interiors • Electrical and Mechanical Rooms • Electrical and Sanitary Underground Services <p>Loomis New ADA Ramp:</p> <ul style="list-style-type: none"> • Installation of new ADA ramp and columns • Installation of new ramp roofing system and MEP <p>Morgan Substation:</p> <ul style="list-style-type: none"> • Structure & shell • Bridge (1st) level and equipment (2nd) level interiors • Electrical and sanitary underground services • Traction power equipment delivery, installation, testing and commissioning <p>Hermitage Substation:</p> <ul style="list-style-type: none"> • Removal of existing traction power equipment • Traction power equipment delivery, installation, testing and commissioning 	<p>Complete</p> <p>Complete</p> <p>Complete</p> <p>Complete</p> <p>Complete</p> <p>Complete</p> <p>Complete</p> <p>Complete</p> <p>Complete</p> <p>Ongoing</p> <p>Ongoing</p> <p>Complete</p> <p>Ongoing</p> <p>Ongoing</p> <p>Planned</p> <p>Planned</p> <p>Ongoing</p> <p>Planned</p> <p>Complete</p> <p>Ongoing</p> <p>Planned</p> <p>Planned</p> <p>Ongoing</p> <p>Ongoing</p>

Delay Explanation:

N/A



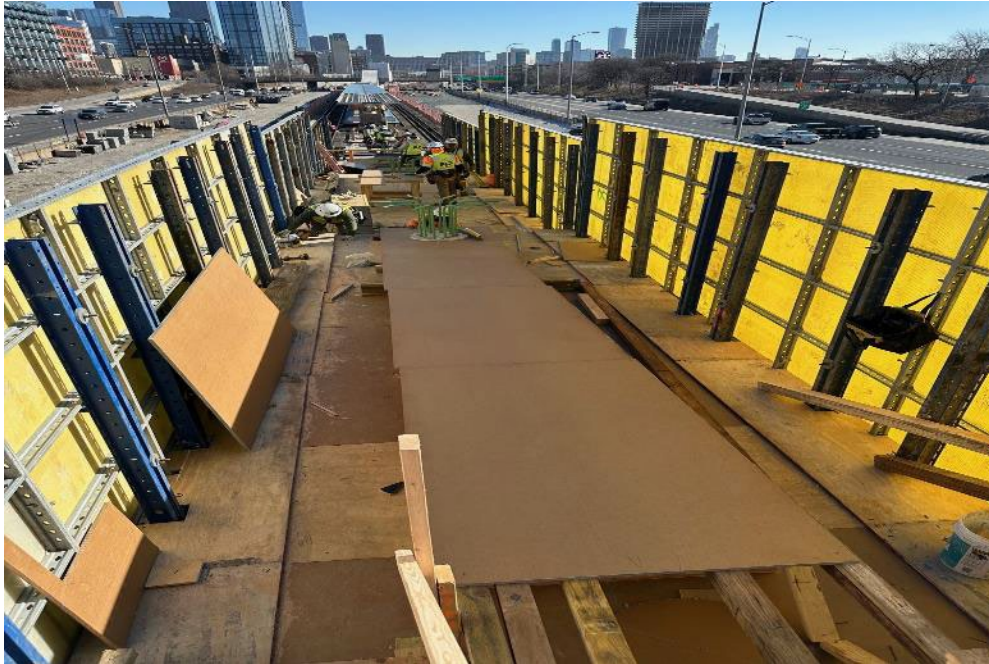
Project Title: Racine Station ADA & Traction Power Improvement Project



Loomis Stationhouse Deck Rebar Installation



Project Title: Racine Station ADA & Traction Power Improvement Project



Loomis Ramp Slab Forms Installation



Project Title: Racine Station ADA & Traction Power Improvement Project



Platform Purlins Installation Near Loomis



Project Title: Racine Station ADA & Traction Power Improvement Project



Morgan Substation Loading Dock Fence Installation



Project Title: Racine Station ADA & Traction Power Improvement Project



Hermitage Substation Existing Floor Leveling



Project Title:Western Brown Line Station Improvement

Justification of Need:

Improvements to Ravenswood Western Station are necessary to bring the station into compliance with current provisions of the Americans with Disabilities Act (ADA), adapt to redeveloped adjacent storefronts, improve security, and extend the useful life of the station through replacement of deteriorated site, building, and platform components. This project is being delivered by a progressive design build delivery method, which is advantageous for both schedule and the design to budget requirement.

Priority of Project:	Medium
Total Project Budget:	\$32.2 M
Construction Contract Value:	\$23.5 M
Earned to Date:	\$14.0 M or 59.6% (as of December 2025)
Percent Change Orders to Construction Contract:	0
Percent Time Used:	106%*
DBE:	DBE goal: 30%. DBE Firms: American Survey & Engineering, PC, Facet Engineering, GSG Consultants. Inc., Quigg Engineering.
Funding Sources:	Chicago Tax Increment Funding, Federal 2022, Federal 2023, CTA bonds
Estimated Start Date/Estimated Length of Project:	GC NTP1: May 11, 2023; NTP2: August 6,2024; Substantial Completion: January 13, 2026 (NTP2 + 525 days)
Designer of Record:	CDM Smith
Construction Manager/General Contractor:	CM: AECOM. GC: FH Paschen.

*Expecting an extension in contract time (July 2026)



Project Title: Western Brown Line Station Improvement

Impact on Customers:	CTA customers may be redirected to use alternate station entrance. Platform closures and back rides will be necessary. The work will also require some temporary bus reroutes and lane closures on Western and Lincoln.
Benefit to System:	State of good repair improvements to the building envelope, platform, platform guardrails and canopy, and interior finishes. New customer assistant booth, reconstructed operator bathroom facility.
Benefit to Community:	Increased station accessibility, improved safety through renovated sidewalks, walkway pavements, lighting, cameras, and signage. Overall improved appearance as a result of painting.
Impact on Accessibility:	New ADA-compliant curbs, bus turnaround islands, replacement of elevator cabs and sidewalks for improved accessibility.
Customer Communication Need:	Construction Activity Notices, coordination with Alderman, press releases.

Comparable Projects:

Quincy Loop Station Upgrade



Project Title: Western Brown Line Station Improvements

Construction Progress

Phase	Description	Status
Construction	Stage 2 Construction	
	Pour Curbs and Sidewalk at BTA	Completed
	Install Duct Bank for ComEd Upgrade	Completed
	Repair Inbound guardrails	On-going
	Glazing/Storefront Replacement (ground floor)	On-going
	Reconstruct Bus Driver Washroom	On-going
	Demo Existing Kiosk/Build Temporary	On-going
	10-day Back Ride – North Stair Treads/Handrail	February 19 – March 1
	Lighting Replacement and Installation	On-going
	Replace North Elevator	Start in March
	Replace South Elevator	Complete early March
	Upgrade Station Electric Service	Mid March
Station House Ceiling Replacement	Mid March	



Project Title: Western Brown Line Station Improvement



South BTA – Base Course Compactions



Project Title: Western Brown Line Station Improvement



South BTA – Placing Curb and Gutter



Project Title: Western Brown Line Station Improvement



East Exit – Demolition of Pavement



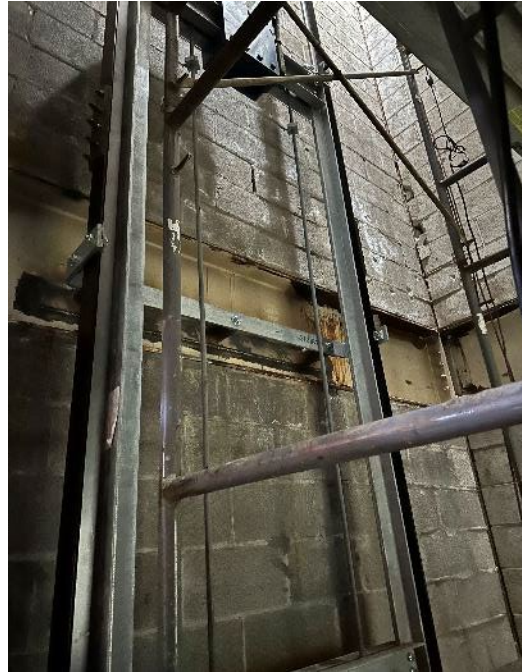
Project Title: Western Brown Line Station Improvement



North Facade - Completed Masonry



Project Title: Western Brown Line Station Improvement



South Elevator – Framing w/ Counterweight



Highlighted Events

Winter Semi-Annual Workforce Outreach Event

Date: February 4, 2026

Location: 3219 W. Carrol Ave. Chicago, IL 60624



156

Attendees

The Winter Semi-Annual Workforce Outreach Event provided a platform for workforce engagement, connecting 156 job seekers with industry partners and career opportunities. This initiative supports CTA's mission to expand equitable access to employment, strengthen community partnership, and drive workforce development.



February 2026 Outreach Events

Small Business Education Series Construction	February 3, 2026	Certified Associate Construction Manager (CMAA) Small Business Showcase	February 18, 2026
Winter Semi-Annual Workforce Outreach Event	February 4, 2026	Workforce Advisory Committee Meeting	February 19, 2026
Chatham Business Association (CBA) Membership Meeting IFR Update	February 10, 2026	Illinois Hispanic Chamber of Commerce (IHCC) Breakfast Meeting DBE IFR Update	February 26, 2026
Greater Englewood Community Development Corporation (GECDC) Membership Meeting IFR Update	February 10, 2026	Federation of Women Contractors (FWC) Membership Meeting DBE IFR Update	February 26, 2026
Hispanic American Construction Industry Association (HACIA) Meeting DBE IFR Update	February 11, 2026	United States Minority Contractors Association (USMCA) Membership Meeting IFR Update	February 26, 2026
Black Contractors United (BCU) February Membership Meeting IFR Update	February 11, 2026	Illinois Hispanic Chamber of Commerce (IHCC) Breakfast - 1st Networking Breakfast	February 26, 2026
National Advanced Mobility Consortium (NAMC) Membership Meeting DBE IFR Update	February 12, 2026		