



# Construction Project Briefing

March 12, 2025



# Today's Presentation

- Traction Power Upgrades - Canal Tie House, Barry and Damen Substations
- Lake Line Austin Station Project
- O'Hare Line – Harlem Station Bus Bridge Reconstruction
- All Stations Accessibility Program – (ASAP)
- Racine Station ADA & Traction Power Improvement Project
- Red and Purple Modernization Project



# Project Title: Traction Power Upgrades – Canal Tie House, Barry and Damen Substations

**Justification of Need:**

The CTA has identified additional traction power demands based on results from the Blue Line Load Flow study and determined that three (3) areas along the blue line O'Hare branch and Dearborn subway may experience problems with running the new fleet at the service levels proposed. To continue providing a reliable and safe service, it is necessary to build two (2) new traction power substations, one at Barry and the other at Damen with all their infrastructure support along with installing a new Tie Breaker house in the Dearborn subway. Also, the project includes the replacement of all traction power equipment at the Haymarket substation.

Priority of Project:	High
Total Project Budget:	\$122.8 Million
Construction Contract Value:	\$67.9 Million
Earned to Date:	91.5% (As of January 2025)
Percent Change Orders to Construction Contract:	16.7%
Percent Time Used:	95.0% (As of January 2025)
DBE:	Goal: 25% Commitment: 25.3% Workforce Goals: 10% Career Opportunity/ 8% Apprentice/ 25% EDA Contract is on track to meet the DBE goal
Funding Source:	CTA Bonds / Rebuild Illinois
Estimated Start Date/Estimated Length of Project:	NTP: October 20, 2021, Estimated Duration 1020 days/Substantial Completion August 5, 2024
Designer of Record:	TYLin
Construction Manager/General Contractor:	WSP / John Burns Construction



# Project Title: Traction Power Upgrades – Canal Tie House, Barry and Damen Substations

Impact on Customers:	Minor service disruptions during track access occurrences.
Benefit to System:	The new Traction Power Substation will increase service reliability to the Blue Line.
Benefit to Community:	New buildings will enhance and will blend with the surrounding community and will benefit transit riders in the Blue Line with a safer and more reliable service.
Impact on Accessibility:	N/A
Customer Communication Need:	Construction Activity Notices.

## Comparable Projects:

East Lake, Milwaukee & Illinois (ELMI) and Broadway substations



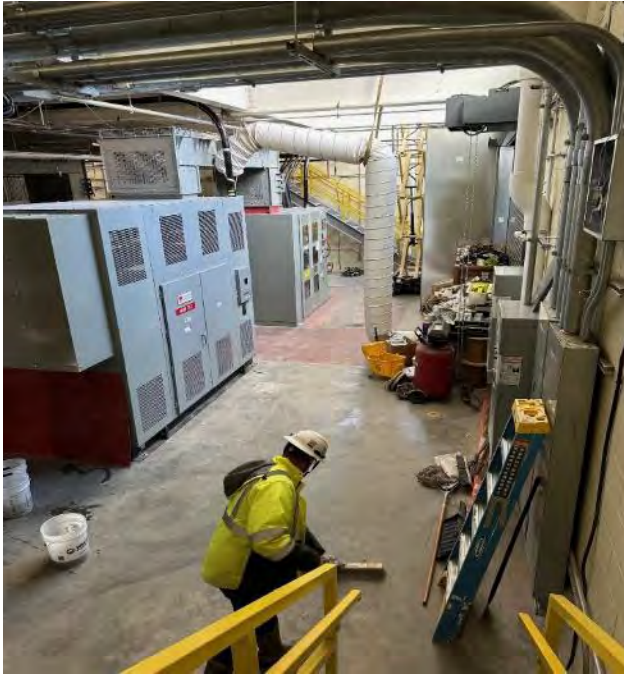
# Project Title: Traction Power Upgrades – Canal Tie House, Barry and Damen Substations

## Construction Progress

Phase	Description	Status
Haymarket Substation	<ul style="list-style-type: none"><li>• Parking Lot Restoration/Punchlist</li></ul>	Ongoing
Canal Tie-House	<ul style="list-style-type: none"><li>• Commission Tie-House</li><li>• Interior Tie-House Build-Out</li><li>• Cable connections to Tie-House</li></ul>	Ongoing Ongoing Ongoing
Damen Substation	<ul style="list-style-type: none"><li>▪ Installation of External Traction Power Cables</li><li>• Equipment Testing and Commissioning</li><li>• Build building interior, flooring, rooms and finishes</li></ul>	Ongoing Ongoing Ongoing
Barry Substation	<ul style="list-style-type: none"><li>• Installing substation Traction Power Equipment.</li><li>• Build exterior walls and roof.</li><li>• Build building interior, flooring, rooms and finishes</li></ul>	Ongoing Ongoing Ongoing
Belmont Crossover	<ul style="list-style-type: none"><li>• Punchlist work.</li></ul>	Ongoing



# Project Title: Traction Power Upgrades – Canal Tie House, Barry and Damen Substations



**Substation Cleaning for Energization at Damen**





# Project Title: Traction Power Upgrades – Canal Tie House, Barry and Damen Substations



**External Conduit Installation at Damen**



# Project Title: Traction Power Upgrades – Canal Tie House, Barry and Damen Substations



**Traction Power Equipment Deliveries at Barry**





# Project Title: Traction Power Upgrades – Canal Tie House, Barry and Damen Substations



**Equipment Testing at Canal Tie-House**



# Project Title: All Stations Accessibility Program – Lake Line Austin Station

Justification of Need:

As part of our ongoing efforts to make the CTA system fully accessible to people with disabilities, improvements to the Lake Line Austin Station are essential. These upgrades will ensure the station complies with current provisions of the Americans with Disabilities Act (ADA). The project will also enhance the state of good repair of the station house building envelope and provide an alternate means of egress for the existing Austin Station.

Priority of Project:	High
Total Project Budget:	\$25.5 M
Construction Contract Value:	\$15.3 M
Earned to Date:	\$3.3 M
Percent Change Orders to Construction Contract:	0
Percent Time Used:	25%
DBE:	DBE goal: 30%.  DBE Firms: Highway Safety Corporation, Anderson Shah Roofing, Pinto Construction Group, Smith Painting Services and Chicago Area Plumbing and Mechanical.
Funding Sources:	Rebuild Illinois and Federal 2021
Estimated Start Date/Estimated Length of Project:	GC NTP: December 29, 2023; Substantial Completion: December 22, 2025 (NTP + 724 days)
Designer of Record:	Epstein
Construction Manager/General Contractor:	CM: SQN. GC: John Burns Construction.



# Project Title: All Stations Accessibility Program – Lake Line Austin Station

Impact on Customers:	There will be impact to CTA customers and surrounding community related to pedestrian and vehicular detours for utility replacements along Corcoran also CTA customers will be redirected to use temporary station entrance at Mason Ave. Platform closures and back rides will be necessary throughout construction.
Benefit to System:	System benefits include new elevator and elevator machine room, state of good repair improvements to the station house building envelope, new electrical room, new communications room, new janitor closet. new customer assistant kiosk and ADA compliant customer assistant restroom.
Benefit to Community:	Some Community benefits are the overall aesthetics of the Austin station will be improved. Increased station accessibility with the new elevator and associated ramps and sidewalk. Improved safety by reopening of the Auxiliary exit at Mason Ave. There will also be improvements to the streetscape.
Impact on Accessibility:	New ADA-compliant elevator, Auxiliary exit and sidewalks for improved accessibility.
Customer Communication Need:	Construction Activity Notices, GCR Coordination with City of Chicago Alderman, The Village of Oak Park and Website / Press releases.

## Comparable Projects:

Lake Line – Oak Park and Ridgeland Stations



# Project Title: All Stations Accessibility Program – Lake Line Austin Station

## Construction Progress

Phase	Description	Status
Construction	The contractor continued site utility work, installing new underground sewer and electrical utilities.	Ongoing
	The contractor continued selective demolition in the Mason station house.	Ongoing
	Contractor repaired the concrete stairs between the Mason station house and platform level.	Completed



# Project Title: All Stations Accessibility Program – Lake Line Austin Station



**Preparing to Hoist Station House Steel Roof Framing**





# Project Title: All Stations Accessibility Program – Lake Line Austin Station



**Tile Demolition at Mason Station House**



# Project Title: All Stations Accessibility Program – Lake Line Austin Station



**Placing Concrete Over Newly Installed Utilities**



# Project Title: O'Hare Line – Harlem Station Bus Bridge Reconstruction

**Justification of Need:** The condition of the Harlem Station bus bridge was initially identified as an infrastructure need in 2013. At that time, CTA noted significant deterioration to the concrete deck, concrete piers, and structural steel support elements due to salt corrosion and water infiltration. More recently, critical defects caused by concrete deck expansion joint failure have been identified in the south pier. The bridge needs to be replaced before it becomes a safety hazard and has to be taken out of service.

Priority of Project:	Medium
Total Project Budget:	\$40.0 M
Construction Contract Value:	\$20.4 M
Earned to Date:	\$11.5M
Percent Change Orders to Construction Contract:	0
Percent Time Used:	101%*
DBE:	DBE goal: 25%.  DBE Firms: MW Powell, Highway Safety Corp., Argo Construction LLC, Vision Painting, Alpine Demolition, W.E.B. Production & Fabricating, AC Iron LLC, S & J Construction, Livewire Electrical Systems.
Funding Sources:	Rebuild Illinois, Federal 2020, Federal 2016, Surface Transportation Program (CMAP)s
Estimated Start Date/Estimated Length of Project:	GC NTP: September 5, 2023. Substantial Completion: March 8, 2025 (NTP + 550 days)
Designer of Record:	HNTB
Construction Manager/General Contractor:	CM: TranSystems/TY Lin JV. GC: John Burns Construction Company.

\* 128-day extension is pending Change Order execution



# Project Title: O'Hare Line – Harlem Station Bus Bridge Reconstruction

Impact on Customers:	Minor changes in bus service and Park & Ride access for those who use the Harlem Blue Line Station on the O'Hare Branch. Rail service will not be impacted.
Benefit to System:	New bridge superstructure and interface between bridge and station, new concrete approaches, bridge deck, ADA-compliant curbs and sidewalks, new canopy on bridge. New bus operator bathroom facility, painting, improved drainage.
Benefit to Community:	Replacement of the bridge before it becomes unsafe will help ensure continuity of service on bus routes out of the O'Hare Line Harlem Station.
Impact on Accessibility:	New ADA-compliant curbs and sidewalks for improved accessibility.
Customer Communication Need:	Construction Activity Notices, coordination with Alderman, press releases.

Comparable Projects:	
Montrose Bridge Replacement (IDOT).	



# Project Title: O'Hare Line – Harlem Station Bus Bridge Improvements

## Construction Progress

Phase	Description	Status
Construction	<ul style="list-style-type: none"><li>• Install sewer for bus washroom</li></ul>	Completed
	<ul style="list-style-type: none"><li>• Install bus washroom Foundations</li></ul>	Planned Q1 '25
	<ul style="list-style-type: none"><li>• Set Deck Formwork and install Rebar</li></ul>	Planned late Q1 '25
	<ul style="list-style-type: none"><li>• Pour New Bridge Deck</li></ul>	Planned late Q1 '25
	<ul style="list-style-type: none"><li>• Pour Parapet Wall and Sidewalk</li></ul>	Planned early Q2 '25
	<ul style="list-style-type: none"><li>• Install below bridge lighting</li></ul>	Planned Q2 '25
	<ul style="list-style-type: none"><li>• Install Bridge Canopy Steel/Roofing</li></ul>	Planned Q2 '25
	<ul style="list-style-type: none"><li>• Install Masonry for Bus Washroom</li></ul>	Planned Q2 '25
	<ul style="list-style-type: none"><li>• Directional Bore for Water and Sewer</li></ul>	Planned Q2 '25





# Project Title: O'Hare Line – Harlem Station Bus Bridge Reconstruction



**Pavement Removal at North Bridge Approach**



# Project Title: O'Hare Line – Harlem Station Bus Bridge Reconstruction



**Coring 24" Hole in Manhole for sewer pipe**



# Project Title: O'Hare Line – Harlem Station Bus Bridge Reconstruction



**New Electrical Manhole at Bus Canopy**



# Project Title: All Stations Accessibility Program

**Justification of Need:**

The CTA is committed to making its system completely accessible to people with disabilities in the next 20 years by becoming the first legacy transit system to make all of its train stations accessible.

Priority of Project:	High
Total Program Budget:	\$4.9 Billion
Total Funded Value:	\$740.8 Million
Under Contract:	% (As of November 2024)
Total Number of Stations Currently Accessible	104 (71%)
Total Number of Stations Currently Programed for Upgrades	14 (81%)
Total Number of Elevators Programmed for Rehab	16 of 173
Estimated Start Date/Estimated Length of Project:	Phase 1: 2023-2027, Phase 2 (Funded): 2026-2028



# Project Title: All Stations Accessibility Program

## Funded Program Progress

Phase	Description	Status
Construction	<b>Funded Station Projects</b>	
	Lawrence (Red Line)	On-going
	Argyle (Red Line)	On-going
	Berwyn (Red Line)	On-going
	Bryn Mawr (Red Line)	On-going
	Racine (Blue Line)	On-going
	Austin (Green Line)	Beginning
	State/Lake (Loop)	Pending (CDOT)
Design	<b>Funded Design Projects</b>	
	California (Blue Line)	Complete
	Montrose (Blue Line)	On-going
	16 Elevator Rehabs	On-going
	Belmont (Blue Line)	Beginning
	Irving Park (Blue Line)	Beginning
	Pulaski (Blue Line)	Planning/Environmental
	Oak Park (Green Line)	Planning/Environmental
	Ridgeland (Green Line)	Planning/Environmental





# Project Title: Racine Station ADA & Traction Power Improvement Project

**Justification of Need:**

The existing Racine station is not accessible, and the ADA Improvements will add an elevator, and provide an ADA compliant ramp with adequate clearances for wheelchairs and mobility devices. In addition, to accommodate growth in ridership and maintain reliable service, the CTA procured newer generations of rail car fleets, which required traction power improvements consisting of constructing a new Morgan substation as well as upgrading existing traction power equipment within the Hermitage substation to meet higher power demands on the Forest Park branch of the Blue Line.

Priority of Project:	High
Total Project Budget:	\$106,217,468
Construction Contract Value:	\$75,400,000
Earned to Date:	50% (thru January 2025)
Percent Change Orders to Construction Contract:	0%
Percent Time Used:	68% (thru January 2025)
DBE:	Goal: 25% Commitment: 25% Workforce Goals: 10% Career Opportunity, 15% Apprentice, 25% EDA The contract is on track to meet the DBE goal
Funding Source:	IDOT - Rebuild Illinois
Estimated Start Date/Estimated Length of Project:	NTP: 5/12/2023, Project Duration: 925 days (NTP through Substantial Completion)
Designer of Record:	HNTB
Construction Manager/General Contractor:	Congress Corridor Partners, a JV between (WSP/Ardmore) / F.H. Paschen, S.N. Nielsen & Associates



# Project Title: Racine Station ADA & Traction Power Improvement Project

Impact on Customers:	<ul style="list-style-type: none"><li>• Minor service disruptions during 54hr weekend TAOs.</li><li>• No rail service between IMD and UIC-Halsted stations during weekend linecuts.</li><li>• The Racine station will be OOS during the weekend linecuts.</li><li>• No access to Racine stationhouse from Racine street until completely rebuild, the Loomis stationhouse will remain in service during this time.</li><li>• Local bus shuttles will be provided during weekend linecuts.</li></ul>
Benefit to System:	<ul style="list-style-type: none"><li>• The project will make the Racine station fully accessible.</li><li>• The project will add more power to boost reliability and meet service demands.</li><li>• The project will reduce the Racine station and Hermitage substation maintenance needs.</li></ul>
Benefit to Community:	<ul style="list-style-type: none"><li>• When completed, the project is expected to accommodate all the accessibility needs for riders traveling through the Racine station utilizing various mobility devices.</li></ul>
Impact on Accessibility:	<ul style="list-style-type: none"><li>• YES</li></ul>
Customer Communication Need:	<ul style="list-style-type: none"><li>• GCR outreach with surrounding stakeholders.</li><li>• Construction activity notices will be distributed as needed.</li><li>• Advanced service disruption signs and posters will be installed as needed.</li></ul>

## Comparable Projects:

The Illinois Medical District (IMD) Station Improvements



# Project Title: Racine Station ADA & Traction Power Improvement Project

## Construction Progress

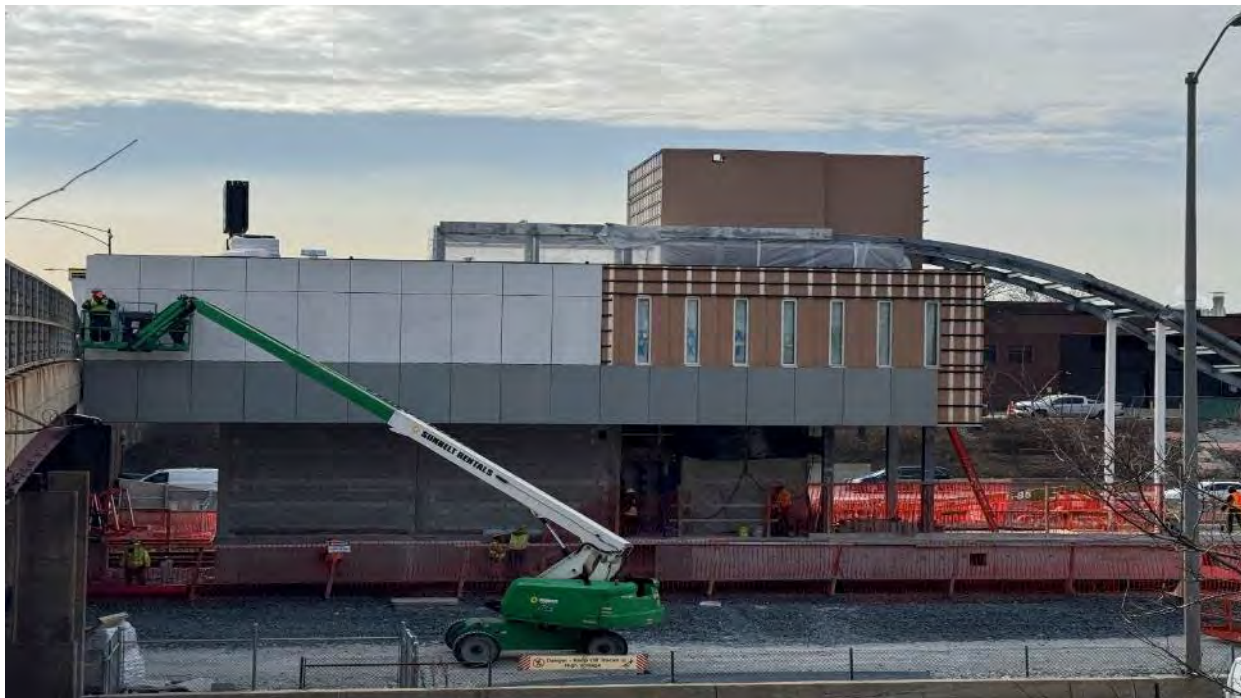
Phase	Description	Status
Construction	<p><b>Racine Stationhouse Entrance:</b></p> <ul style="list-style-type: none"><li>• Structure &amp; shell</li><li>• Main stairs and elevator</li><li>• Bridge level interiors</li><li>• Electrical and mechanical rooms</li><li>• Electrical and sanitary underground services</li></ul> <p><b>Racine Platform New Concourse Extension:</b></p> <ul style="list-style-type: none"><li>• Structure &amp; shell</li><li>• MEP and communication systems</li></ul> <p><b>Racine Platform and Canopy:</b></p> <ul style="list-style-type: none"><li>• Canopy demolition and restoration</li><li>• MEP and communication systems</li></ul> <p><b>Loomis Stationhouse Entrance:</b></p> <ul style="list-style-type: none"><li>• Demolition of existing stationhouse, ramp and columns</li><li>• Structure &amp; Shell</li><li>• Bridge Level Interiors</li><li>• Electrical and Mechanical Rooms</li><li>• Electrical and Sanitary Underground Services</li></ul> <p><b>Loomis New ADA Ramp:</b></p> <ul style="list-style-type: none"><li>• Installation of new ADA ramp and columns</li><li>• Installation of new ramp roofing system and MEP</li></ul> <p><b>Morgan Substation:</b></p> <ul style="list-style-type: none"><li>• Structure &amp; shell</li><li>• Bridge (1<sup>st</sup>) level and equipment (2<sup>nd</sup>) level interiors</li><li>• Electrical and sanitary underground services</li><li>• Traction power equipment delivery, installation, testing and commissioning</li></ul> <p><b>Hermitage Substation:</b></p> <ul style="list-style-type: none"><li>• Removal of existing traction power equipment</li><li>• Traction power equipment delivery, installation, testing and commissioning</li></ul>	<p>Ongoing</p> <p>Ongoing</p> <p>Ongoing</p> <p>Ongoing</p> <p>Planned</p> <p>Ongoing</p> <p>Ongoing</p> <p>Ongoing</p> <p>Ongoing</p> <p>Planned</p> <p>Planned</p> <p>Planned</p> <p>Planned</p> <p>Planned</p> <p>Planned</p> <p>Planned</p> <p>Ongoing</p> <p>Ongoing</p> <p>Ongoing</p> <p>Planned</p> <p>Ongoing</p> <p>Ongoing</p>

## Delay Explanation:

N/A



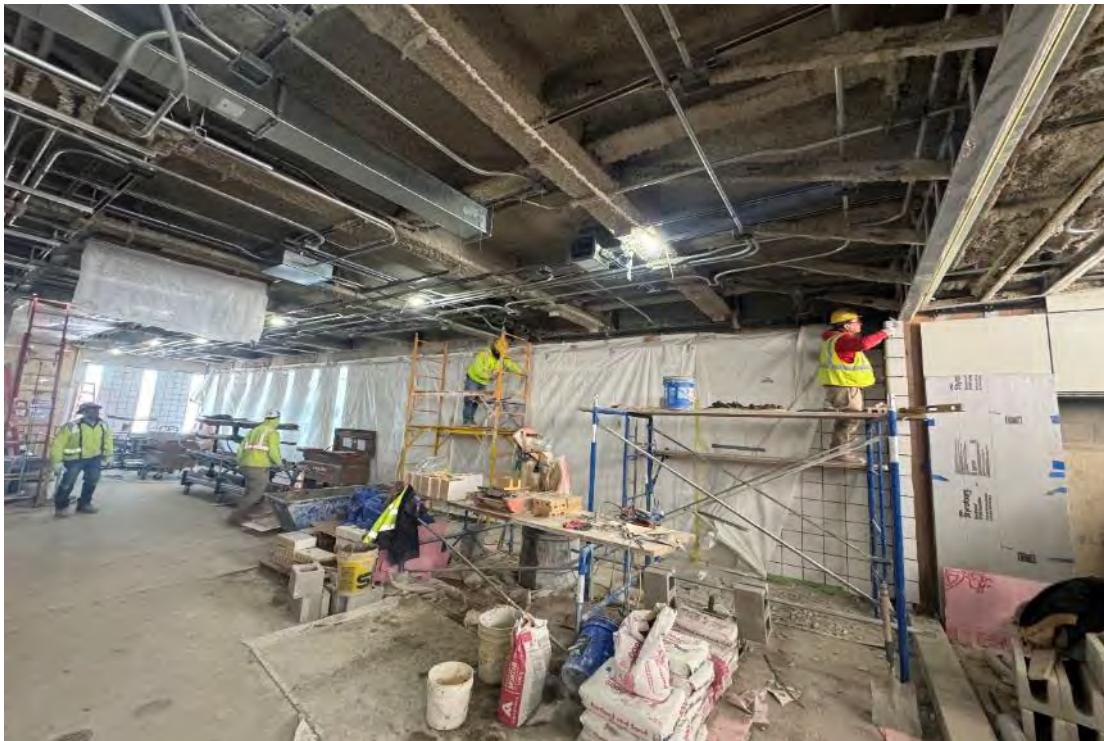
# Project Title: Racine Station ADA & Traction Power Improvement Project



**Racine Stationhouse  
Installing Concrete Panels**



# Project Title: Racine Station ADA & Traction Power Improvement Project



**Racine Stationhouse Interior**





# Project Title: Racine Station ADA & Traction Power Improvement Project



**Racine Stationhouse Interior**



# Project Title: Racine Station ADA & Traction Power Improvement Project



**Morgan Substation HPCP Brackets & Weather Sealant**



# Project Title: Racine Station ADA & Traction Power Improvement Project



**Morgan Substation Electrical Panels**



## Project Title: Racine Station ADA & Traction Power Improvement Project



**Hermitage Substation Power Lineup# 2 Removal**





# Project Title: RPM Phase One – Design-Build Contract

Justification of Need:	The RPM Phase One Project is greatly needed in order to expand capacity on CTA's most utilized rail line and to replace aging infrastructure.		
Priority of Project:	High		
Total Project Budget:	\$ 2.1 Billion (excludes Transit TIF interest payments)		
Construction Contract Value:	Original - \$1,272,275,929            Current - \$1,421,783,997 (through Change Orders 9)		
Earned to Date:	83.98%		
Percent Change Orders to Construction Contract:	11.8%		
Percent Time Used:	87.76%		
DBE:	Design: Goal: 20% / Commitment: 20.64% Construction Goal: 20% / Commitment: 20% Workforce Goals: 10% WIOA / 15% Apprentice / 35% EDA Contractor is on track to meet the DBE goal		
Funding Source:	CTA Financing, FTA Core Capacity Grant, CMAQ, TIFs		
NTP / Construction Start / Estimated Completion:	February 8, 2019 / October 2019 / 2025		
Design-Build Contractor:	Walsh-Fluor Design-Build Team		
Owners Representative:	Elevated Solutions Partners		
<b>Detailed Overview of Scope:</b> RPM Phase One consists of the following elements that will allow CTA to expand service along the Red and Purple lines:			
<ul style="list-style-type: none"><li>• Lawrence to Bryn Mawr Modernization (LBMM) – complete reconstruction and addition of ADA accessibility at four Red Line stations (Lawrence, Argyle, Berwyn, and Bryn Mawr) and reconstruction of 6 miles of track, structures, and viaducts from Leland Ave. to Ardmore Ave.</li><li>• Red-Purple Bypass (RPB) - Construction of a grade-separated bypass for the Brown Line at Clark Junction, just north of Belmont Ave. Includes realignment and reconstruction of 1.4 miles of mainline tracks and structure between Belmont station and south of Cornelia Ave.</li><li>• Corridor Signal Improvements (CSI) – Installation of new higher-capacity signal system on 23 miles of track between Belmont and Howard stations.</li></ul>			



# Project Title: RPM Phase One – Design-Build Contract

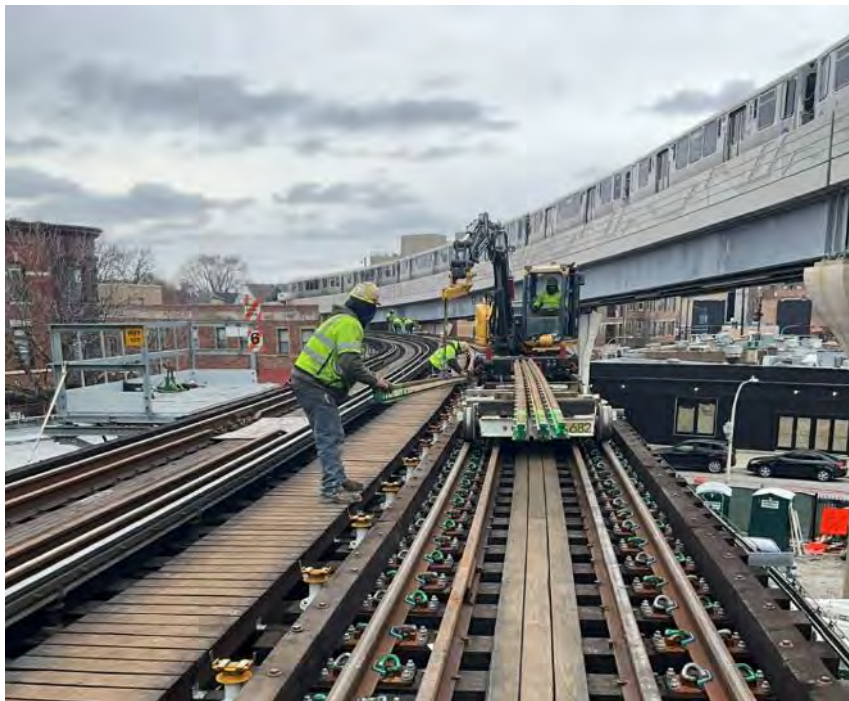
Phase	Description	Status
<b>Administrative / Design:</b>	<ul style="list-style-type: none"><li>Continued submittal/revisions of required management plans</li><li>Continued Design Development in support of Signal Improvements</li><li>Red-Purple Bypass (RPB)<ul style="list-style-type: none"><li>Civil At-Grade Improvements – drainage installation and alley pavement</li></ul></li></ul>	Ongoing Ongoing
<b>Construction:</b>	<ul style="list-style-type: none"><li><ul style="list-style-type: none"><li>North Mainline Stage 3 track work</li><li>Ravenswood Stage 3 track work</li><li>Ravenswood Stage 3 structural repairs</li><li>Installation of foot walks for Stage 3</li><li>Stage 3 completed sub-stages: 3D/3E/3F/3H/3I</li></ul></li><li>Lawrence to Bryn Mawr Modernization<ul style="list-style-type: none"><li>Bryn Mawr and Hollywood Aux Station<ul style="list-style-type: none"><li>Structural building work</li><li>Canopy erection</li><li>Building Finishes</li><li>MEP work</li><li>Continued build out of station comm room; started cable installations for technology devices</li></ul></li><li>Berwyn and Aux Station<ul style="list-style-type: none"><li>Structural building work</li><li>Platform canopy</li><li>MEP work</li></ul></li><li>Argyle Station<ul style="list-style-type: none"><li>Structural building work</li><li>Platform precast panels</li><li>MEP work</li></ul></li><li>Lawrence Station<ul style="list-style-type: none"><li>Platform precast panels</li><li>Structural building work</li></ul></li><li>Trackwork – plinths patching, placing fastener plates and rails NM1 and NM2 completed up to Winona, Winona to Leland outstanding</li></ul></li><li>Corridor Signal Improvements (CSI)<ul style="list-style-type: none"><li>Continued signal system testing monitoring at Clark, Kenmore, Barry and Lakewood-Seminary Relay Houses</li><li>Installation of signal and communications fiber optic cabling in the RPB area</li><li>Installation of fiberglass decking on signal equipment platforms south of Addison Interlocking</li><li>Commissioning of signal equipment for NM3/NM4 at Clark Junction</li><li>Signal Testing at Barry Relay House, Clark Relay House, and Addison Relay House for ongoing RPB Stage changes</li><li>Performed signal discrepancy resolution systemwide</li></ul></li></ul>	Ongoing Ongoing Ongoing Ongoing Ongoing Complete  Ongoing  Ongoing Ongoing Ongoing Ongoing Ongoing  Ongoing Ongoing Ongoing  Ongoing Ongoing Ongoing  Ongoing Ongoing Ongoing Ongoing Ongoing Ongoing





# Project Title: RPM Phase One – Design-Build Contract

## Red-Purple Bypass



## Ravenswood Contact Rail Installation



# Project Title: RPM Phase One – Design-Build Contract

## Red-Purple Bypass



## North Main Line Signal Rail Installation



# Project Title: RPM Phase One – Design-Build Contract

## Lawrence to Bryn Mawr Modernization



## Bryn Mawr Station Escalator Installation



# Project Title: RPM Phase One – Design-Build Contract

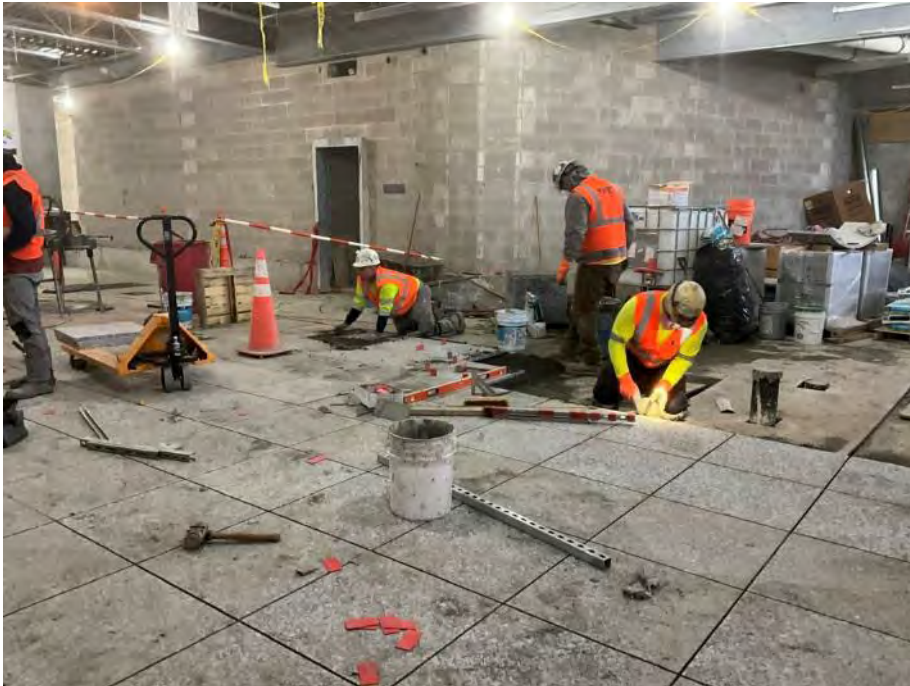
## Lawrence to Bryn Mawr Modernization



**Argyle Platform  
Canopy**



## Lawrence to Bryn Mawr Modernization



## Argyle Station Granite Tile Flooring

## Lawrence to Bryn Mawr Modernization



**Lawrence  
Station  
Exterior**





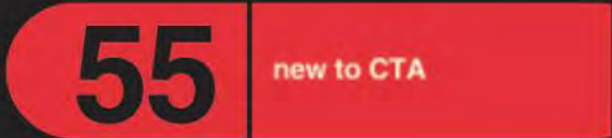
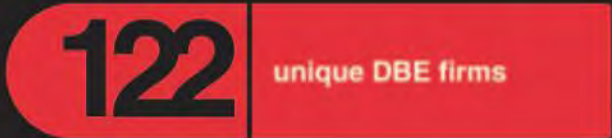
# Project Title: RPM Phase One – Design-Build Contract

Community Outreach	Major Activities	Timing
	<ul style="list-style-type: none"><li>• Weekly Red-Purple Bypass Project updates for 44<sup>th</sup> ward</li><li>• Lawrence to Bryn Mawr project updates for 46<sup>th</sup>, 48<sup>th</sup> wards</li><li>• Lunar New Year parade –W. Argyle Ave.</li><li>• Discussion with Loyola University about future phases of RPM</li><li>• Monthly virtual office hours (February)</li><li>• Roscoe-Sheffield streetscape/30-day intersection closure outreach – Open for Business banners, resident outreach prior to start of closure Feb. 24</li></ul>	<p>Weekly</p> <p>Bi-weekly</p> <p>Feb. 8</p> <p>Feb. 10</p> <p>Feb. 11</p> <p>Ongoing</p>

*RPM brought the CTA mini-train to this year's Lunar New Year Parade in Uptown and handed out magnets and notebooks commemorating the opening of the new Argyle Red Line station this summer.*



# RPM Phase One Design-Build DBE Attainment Through January 31, 2025



DBEs have been awarded

\$293,388,977



Have been paid

\$208,325,958

The prime contractor is on-track to meeting their 20% DBE goal



DBE Awards



DBE Payments





# RPM Phase One Design-Build Workforce Attainment Through January 31, 2025



**2,624**

RPM Phase I has created **2,624** construction trade labor jobs on the design-build team



Labor Hours Worked

**2,275,677.44**



Wages Earned

**\$135,833,289.52**

## RPM Phase I Workforce Goals

Goals

Attainment



Workforce Innovation & Opportunity Act (WIOA)



Apprenticeship



Economically Disadvantaged Area (EDA)



# January 2025 Outreach Events

Red Line Extension (RLE) CTA Disadvantaged  
Business Enterprise (DBE) Certification Drive

January 10

DBE Networking Event with CDM Smith

January 16

Legislative Update & Networking for Veteran  
Business Owners by Veteran's Chamber of  
Commerce

January 27

Driving Small Business the Distance: CTA DBE  
Certification Process

January 29

Human Resources Development Institute  
Community Advisory Group Meeting with Greater  
Roseland Chamber of Commerce

January 29







# February 2025 Outreach Events

Black Contractors Owners and Executives (BCOE) Gala	February 1, 2025	Q1 Quarterly Outreach Event at Build, Inc.	February 19, 2025
CTA Small Business Educational Series: Introduction & Mentor Protégé Networking	February 4, 2025	Chicago Aldermanic Black Caucus Job Fair	February 21, 2025
Q1 Quarterly Workforce Outreach Event	February 5, 2025	CTA Small Business Educational Series: TCP - No Guestimating: Nailing Your Estimates	February 25, 2025
CTA Small Business Educational Series: Clark Construction Get on Board Business Opportunities	February 11, 2025	Driving Small Businesses The Distance: CTA Compliance Do's Don'ts and Must	February 26, 2025
CTA Building Small Businesses (BSB): February Orientation at Olive Harvey College	February 13, 2025	Illinois Hispanic Chamber of Commerce (IHCC) Breakfast	February 27, 2025
CTA Small Business Educational Series: Kiewit - Management at Its Best	February 18, 2025	Young Women's Christian Association Job Fair	February 27, 2025





# Highlighted Events

January 10th

Red Line Extension CTA  
Disadvantaged Business  
Enterprise Certification Drive



27

Attendees







# Highlighted Events

February 5th

Q1

Quarterly Workforce Outreach event



157

Attendees

14

Exhibitors





# Highlighted Events

February 19th

Q1

Quarterly DBE Outreach event



71

Attendees

20

Exhibitors

