



WELCOME!

We will begin shortly.

'Meet the Artists' Virtual Public Meetings | Bryn Mawr, Berwyn, Argyle and Lawrence Stations | June 6-7, 2023

Red and Purple Modernization (RPM) Phase One:

New Red Line Station Art

MEETING OVERVIEW

- RPM Phase One Overview
- CTA Art Program Overview
- RPM Artist Selection Process
- Artist Presentations
 - Mayumi Lake – Argyle
- Community Engagement – Question & Answer Session



RPM Phase One: Overview

Lawrence to Bryn Mawr Modernization

Red-Purple Bypass

Corridor Signal Improvements



Lawrence



Argyle

Berwyn



Bryn Mawr

About CTA Public Art



Red Line 47th Street Station
Jo Hormuth, Artist
Photo Credit: Aron Gent

The Chicago Transit Authority (CTA) incorporates quality design in construction projects and, from time to time, commissions and installs public art for CTA riders and the communities it serves.

The CTA commissions professional artists to create original, site-specific artwork for permanent display in new and newly renovated transit facilities.

Original artworks contribute to each station's identity and enhance travel for CTA customers as well as regional, national and international visitors.



The new commissioned artworks enter the art collection of the Chicago Transit Authority.



Red Line Jarvis Station
Tom Denlinger, Artist
Photo Credit: Aron Gent



About CTA Public Art



The CTA is home to an impressive collection of art including mosaics, image transfer artworks and sculptures.

More than 100 artworks are exhibited at 65 CTA stations and are seen daily by CTA customers.

The original artworks contribute to each location's identity and enhance travel for customers. Art in CTA facilities promotes a friendly, inviting atmosphere for these locations, which function as gateways to the communities they serve.

For more information about CTA and CTA's public art collection visit: www.transitchicago.com/art.



Blue Line California station
Patrick McGee, Artist
Photo Credit: Aron Gent

Public Art Projects for the RPM Phase One Project

5 Art Locations

Stations:

- Bryn Mawr
- Bryn Mawr/Hollywood
(station auxiliary entrance)
- Berwyn
- Argyle
- Lawrence



Project Goals

The CTA seeks to commission permanent contemporary artworks that:

- Are of superior artistic merit
- Relate to the station location and environment
- Provide an improved and more attractive transit experience
- Are original in concept and execution and fabricated of safe, highly-permanent materials and processes
- Require minimal maintenance



Call for Artists

On February 23, 2022, CTA advertised a *Call for Artists* for the RPM art project for Lawrence, Argyle, Berwyn and Bryn Mawr stations.

The *Call for Artists* was open to all living artists, both emerging and established, with a background in two-dimensional and three-dimensional media and an interest in public art. Prior public art experience was not a requirement.

CTA received 166 responses.



Artist Selection Process

In reviewing and evaluating the responses to this *Call for Artists*, CTA considered the following factors, which are listed in order of importance beginning with most important:

- Artistic merit as evidenced in submitted digital images
- Written statement of interest
- Professional recognition as evidenced by awards, honors and exhibition records
- Qualifications as evidenced by resume



Artist Selection Process

A review committee reviewed the responses to the *Call for Artists* for completeness and minimum qualification and eliminated non-viable responses.

A review committee evaluated the remaining responses, determined a relative ranking of candidates based on an all-inclusive evaluation and compiled a short list of candidates for the project.

From the short list of candidates, a selection committee identified finalists for the station locations. Finalists were invited to negotiations and subsequently entered into a contract with CTA for the artwork commission.



Artist Selection Process

Selected Artist Responsibilities:

The artists or artist-teams awarded a contract will be responsible to collaborate with CTA to design, fabricate and deliver an original work of art of durable materials and that requires minimal maintenance.

Among other requirements of the contract, the artist will be required to meet the project timeline and budget.





Commissions

The five art commissions are for design, fabrication and delivery. The budget for each art commission is \$150,000. This is inclusive of:

- Design
- Engineering (if applicable)
- Materials
- Fabrication
- Delivery of artwork
- Artist's fee (approximately 15-20% of the project budget)

Red Line Cermak-Chinatown station
Indira Freitas Johnson, Artist
Photo Credit: Aron Gent

Timeline

Steps	Estimated Timing
'Meet the Artists' community meetings	June 6-7, 2023
Artist/artist teams develop artwork concepts and designs	Summer 2023 – Spring 2024
Approval of artwork, fabrication and delivery of artwork in collaboration with CTA	Spring 2024 – 2025
Art installation and station opening	2025



RPM Artists

William Conger

Alice Hargrave

David Lozano

Mayumi Lake

Tom Torluemke

Bryn Mawr

Bryn Mawr/Hollywood

Berwyn

Argyle

Lawrence

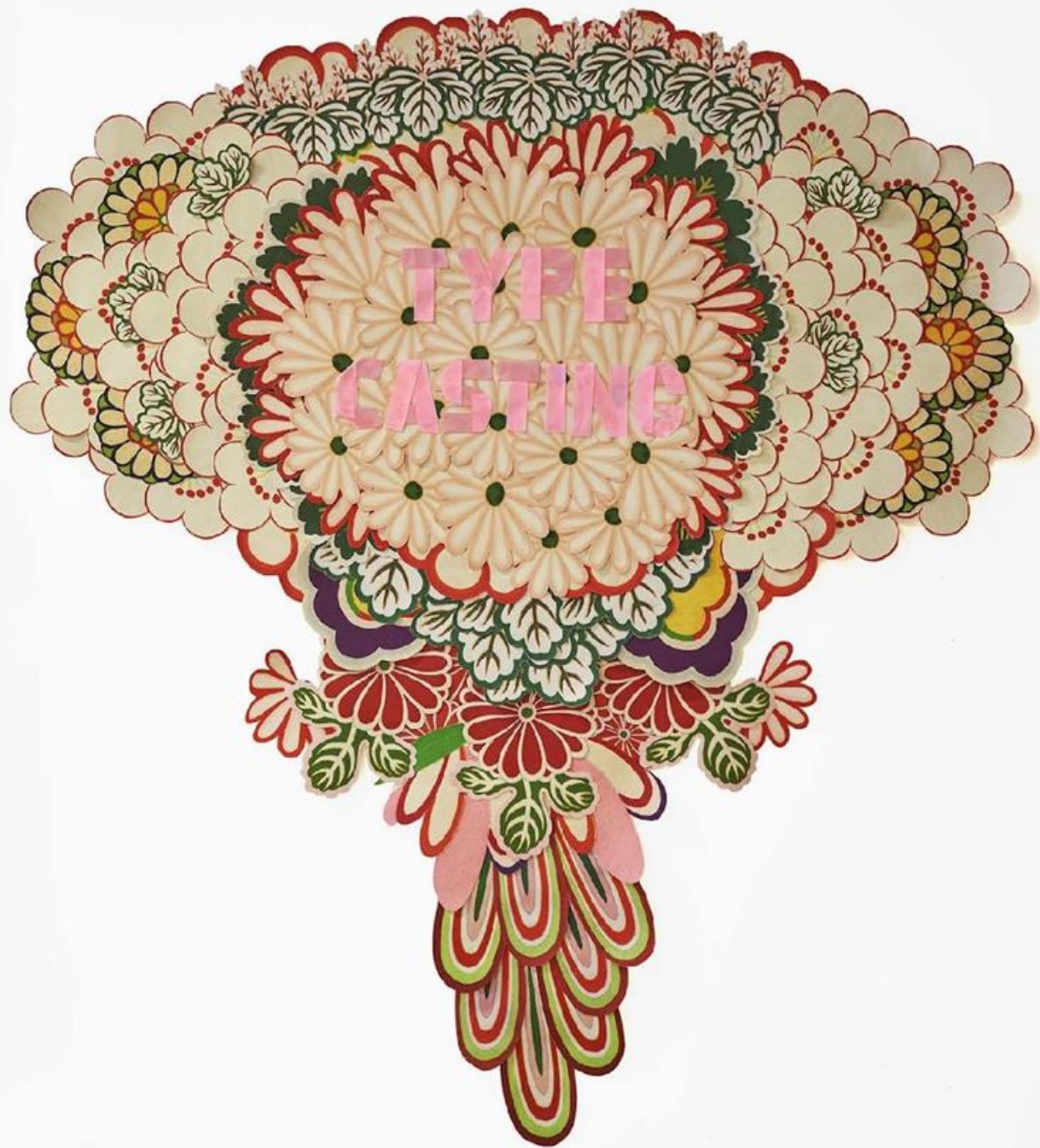
MAYUMI LAKE

Argyle





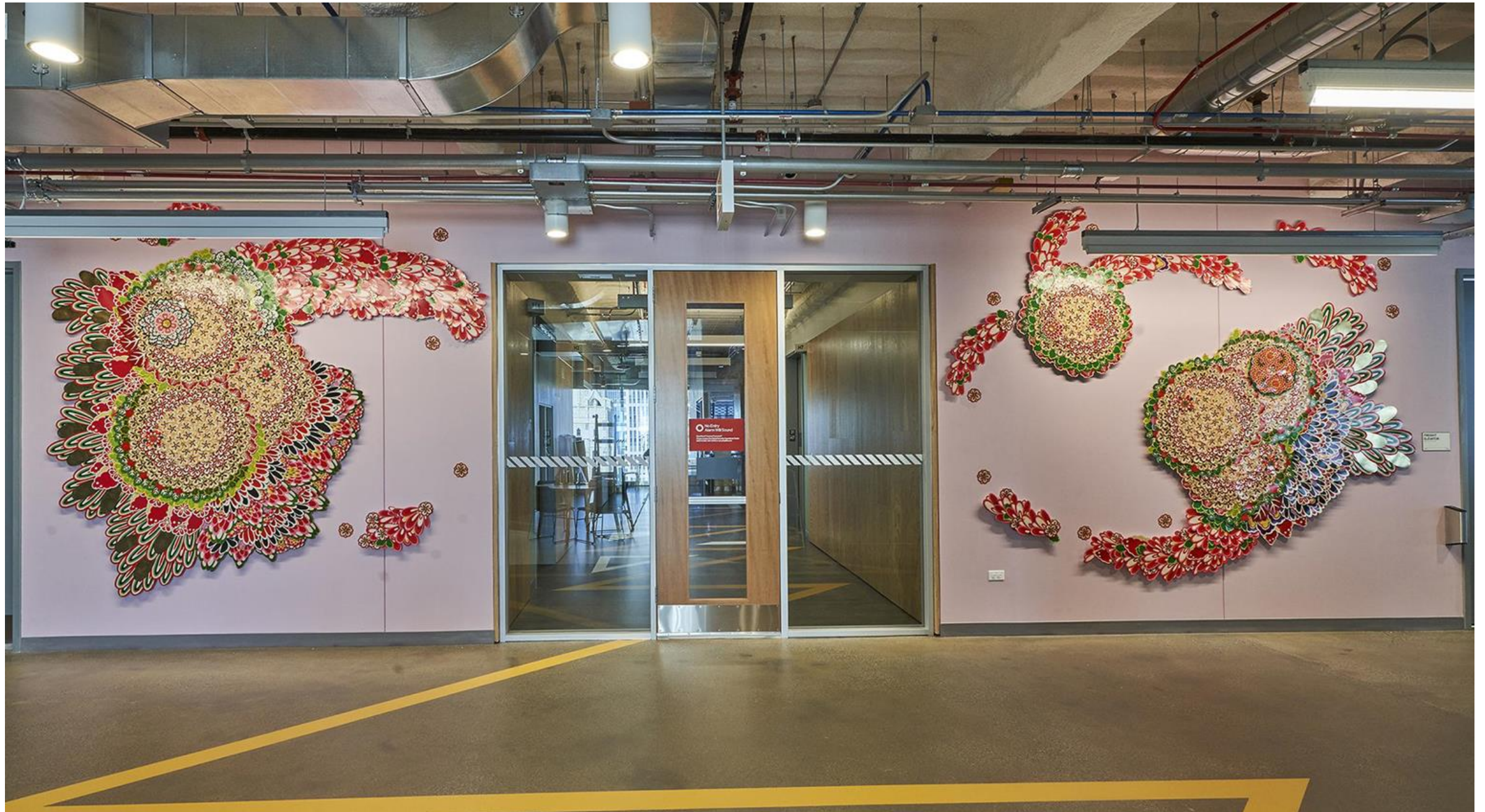




MAYUMI LAKE

Argyle













Community Engagement

Question & Answer

- Highlights of the history of your community?
- Special features of your community?
- Suggestions of themes for the artwork?

Staying Informed

Red & Purple Line Service Updates: transitchicago.com/updates

Website: transitchicago.com/rpm

General Information: rpm@transitchicago.com

Construction Alerts & Virtual Office Hours: transitchicago.com/rpmalerts

Email us: rpm@transitchicago.com

Follow us @CTARPM on Facebook, Instagram and Twitter

Call us: 331-303-2499 for a call back or CTA Customer Service: 888-YOUR-CTA

For more information about CTA and the CTA's public art collection visit: www.transitchicago.com/art

