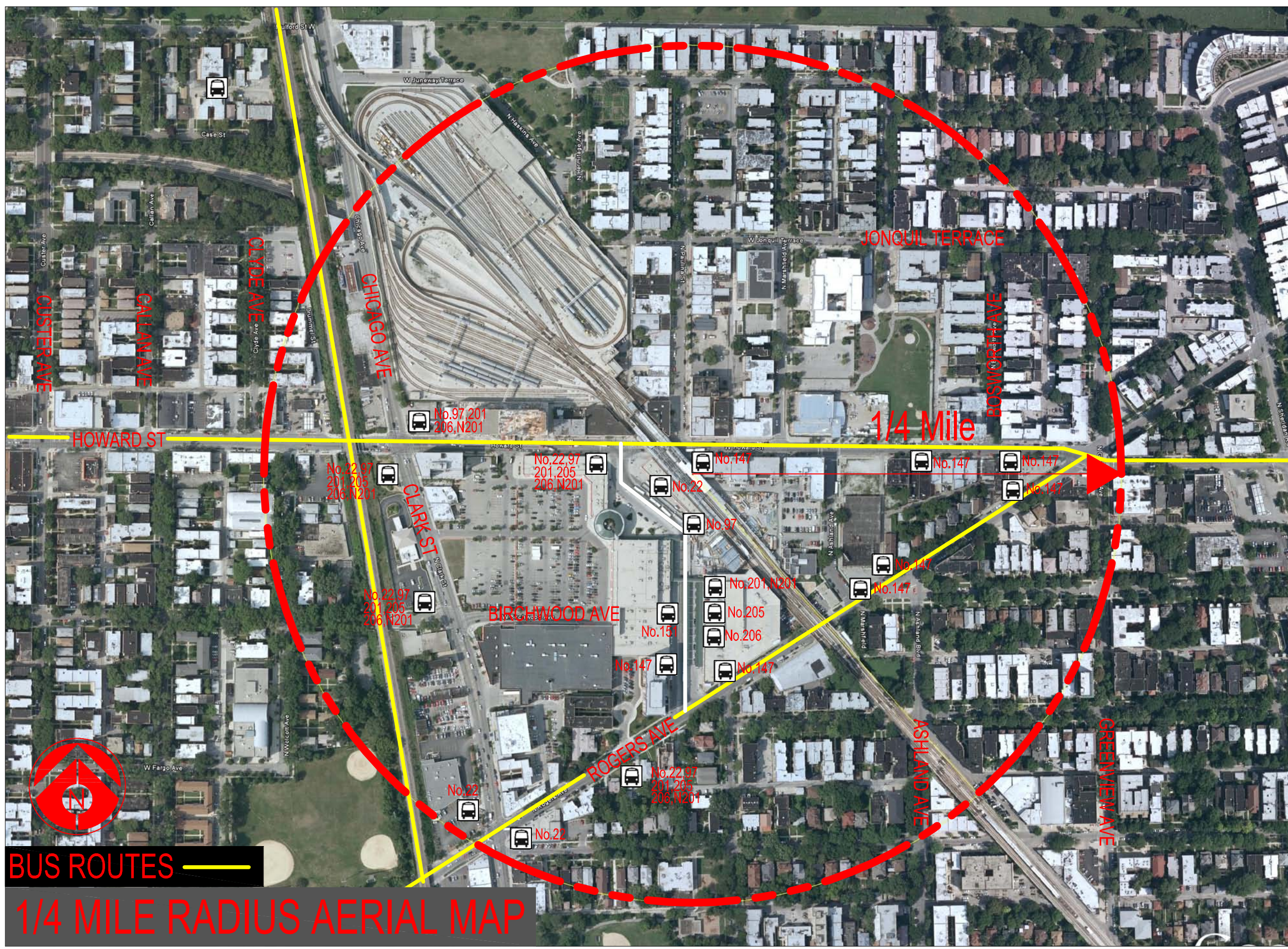




STATIONS: HOWARD



HOWARD STATION

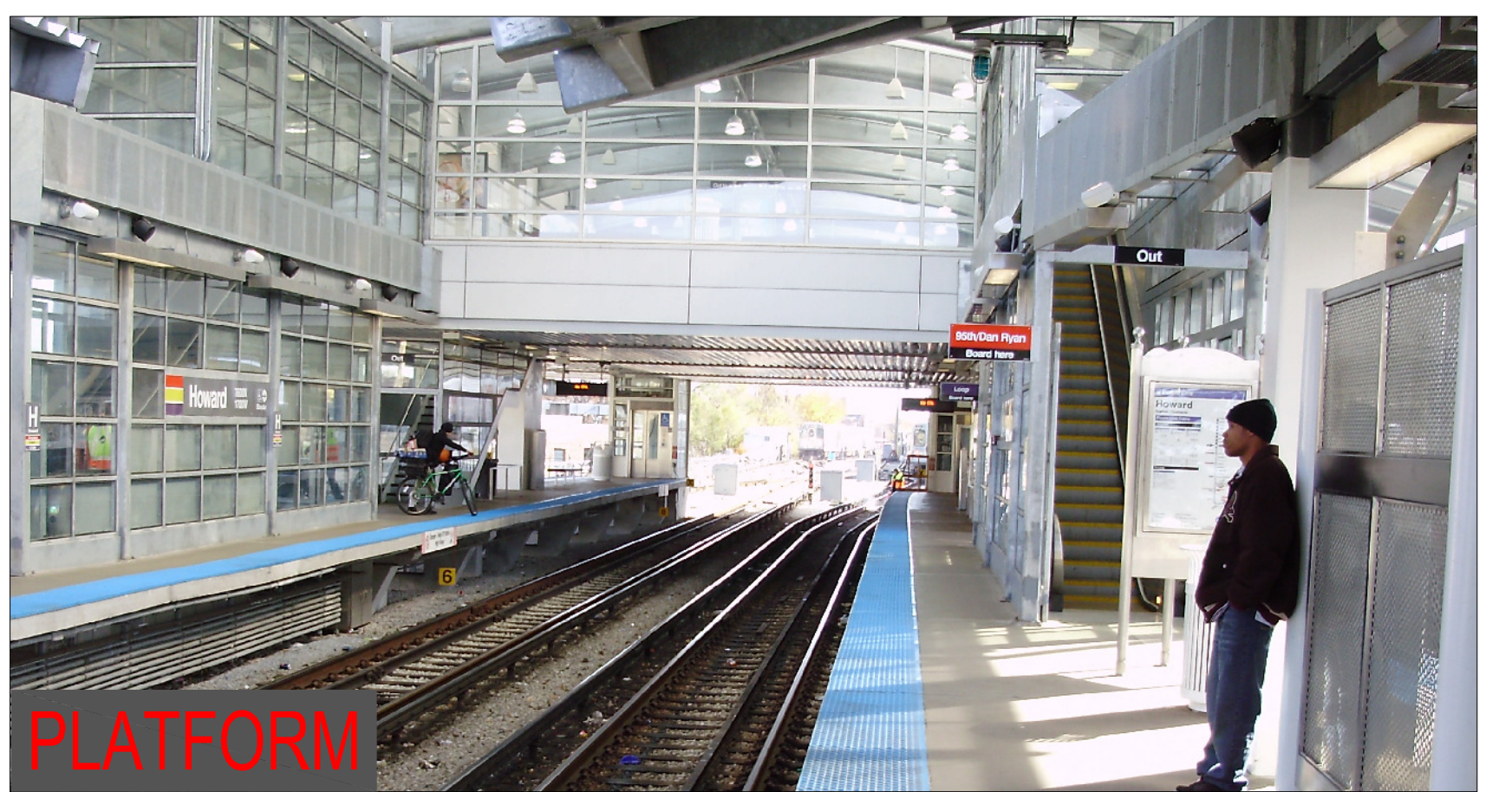
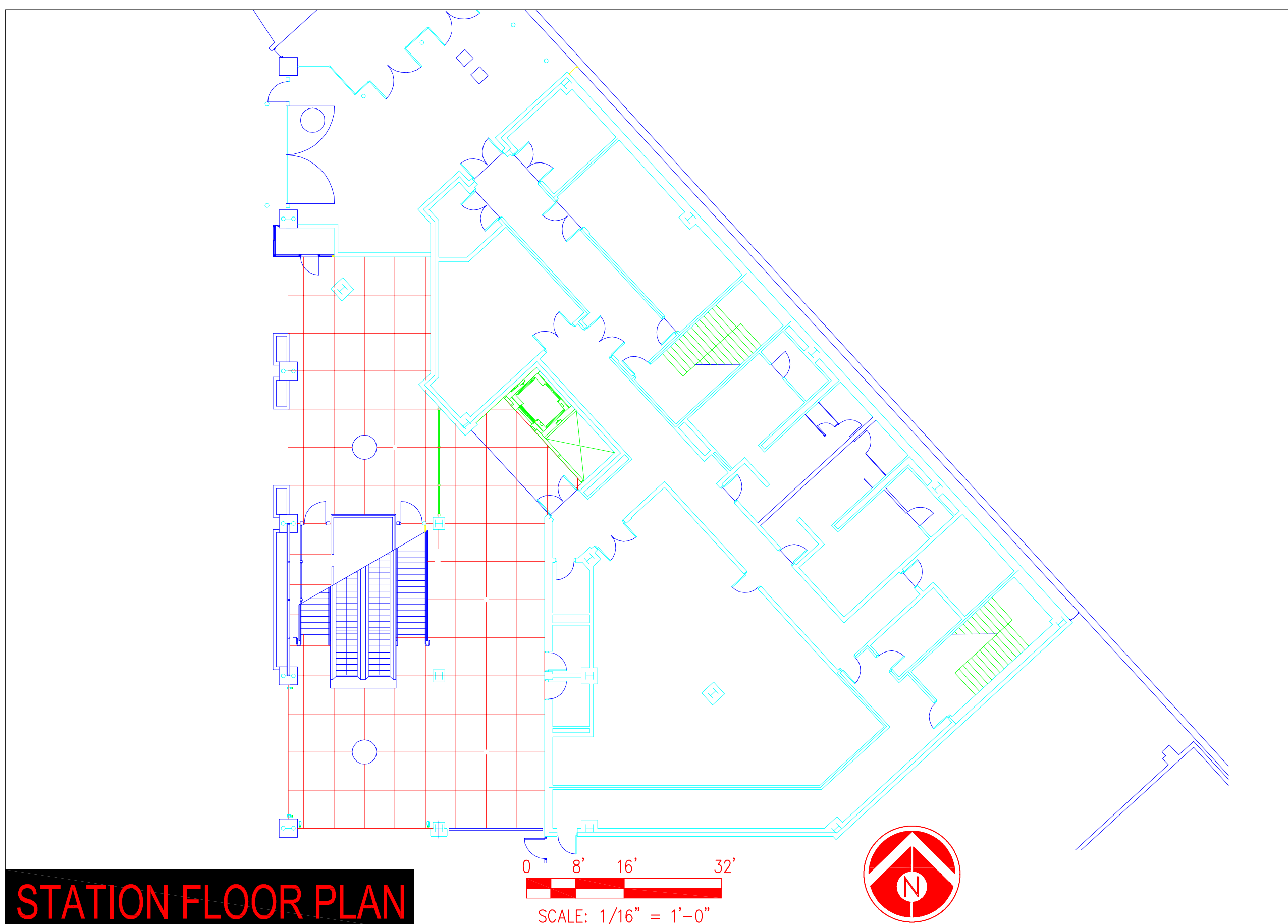
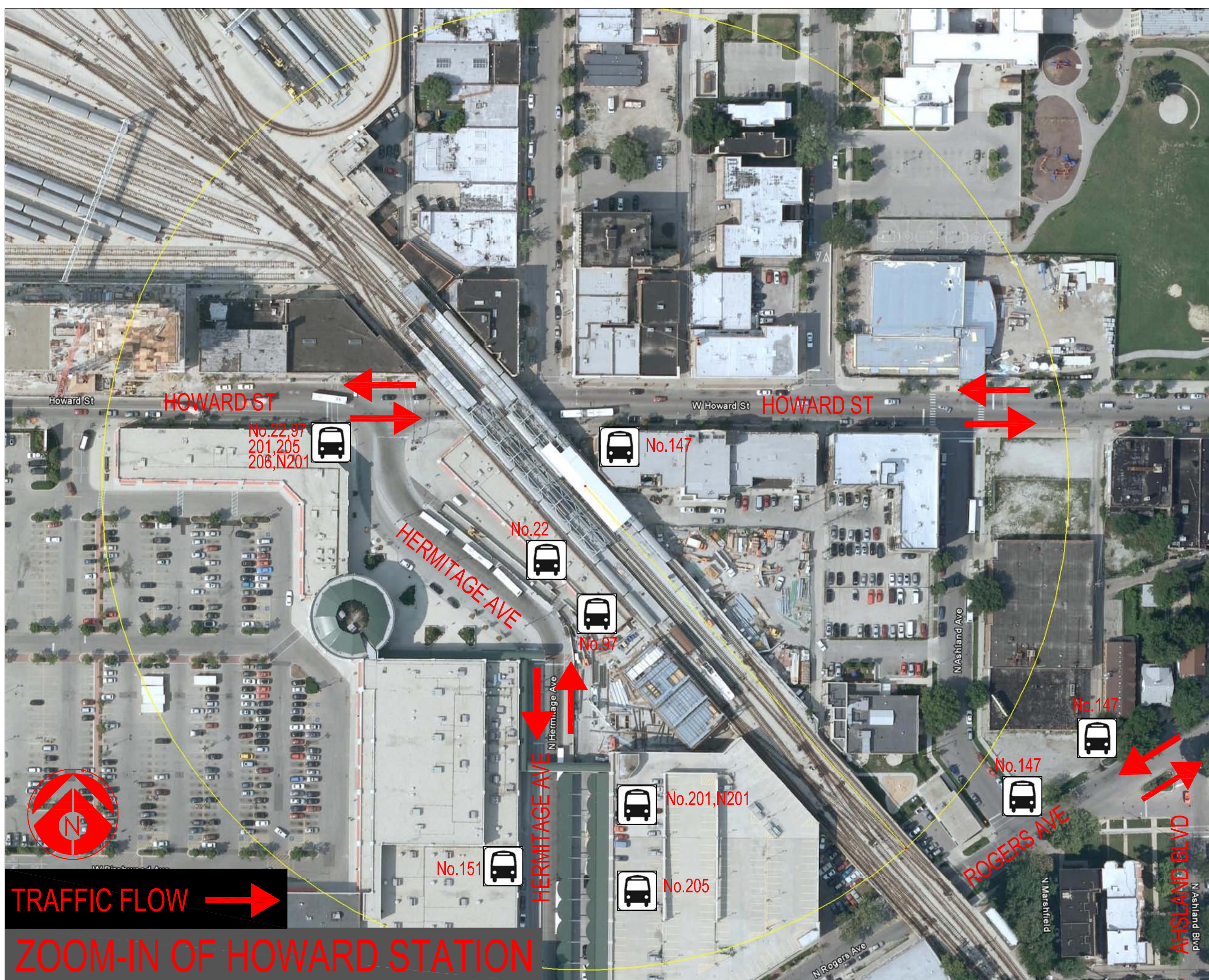
Ridership: 6290/weekday

Initially Constructed: 1921

Reconstructed: 2009

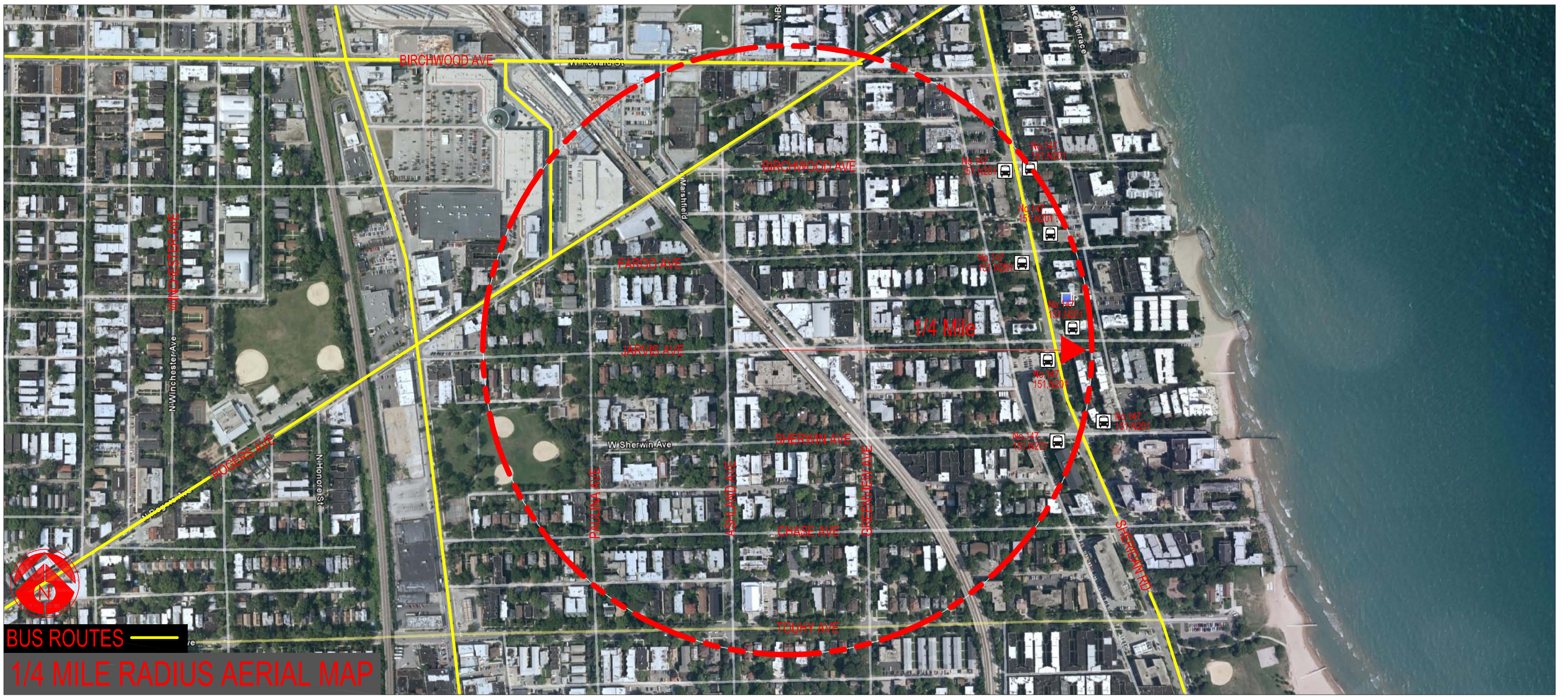
Elevator: Yes

Platform Width: 12'-16'





STATIONS: JARVIS



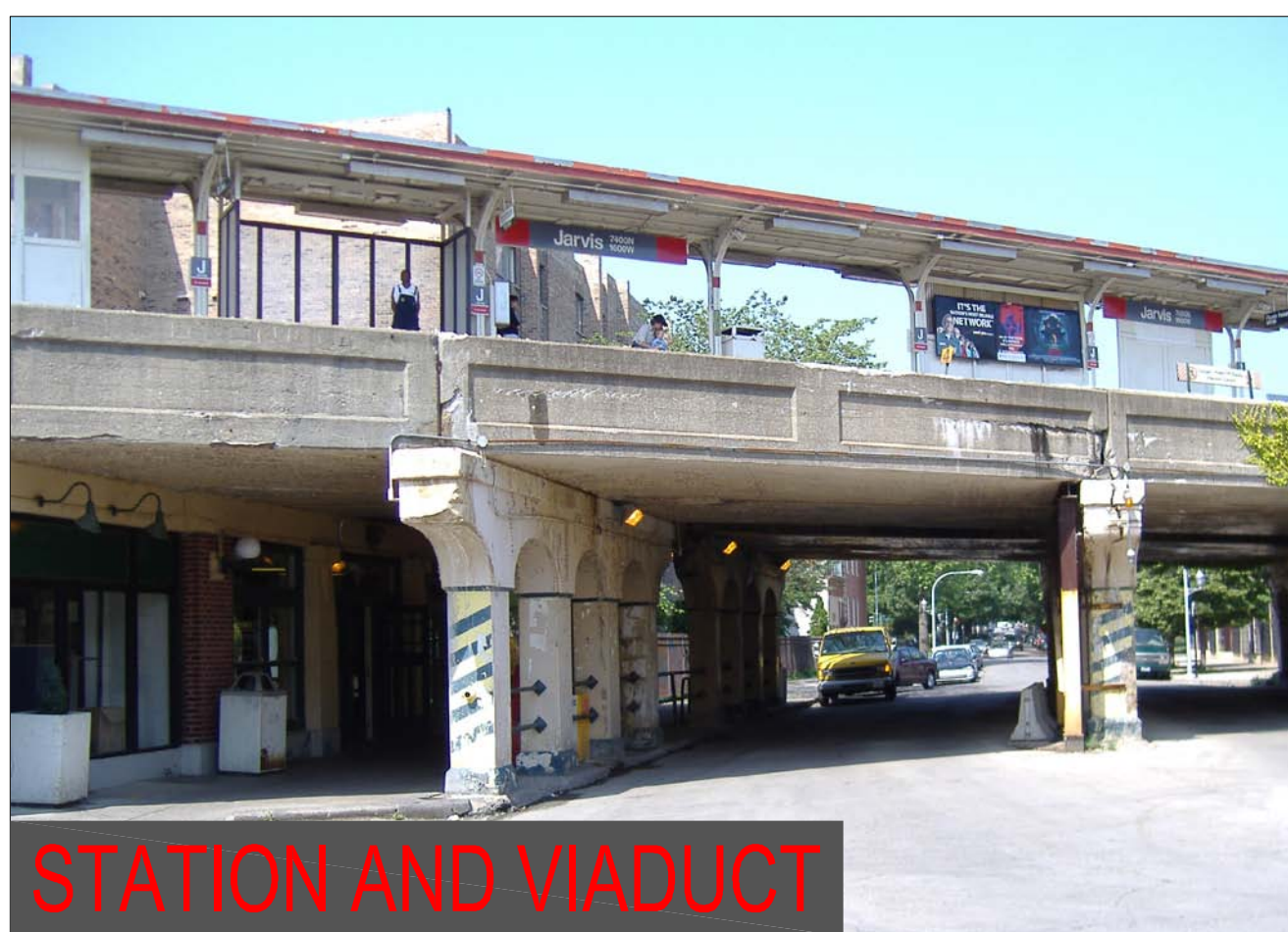
BUS ROUTES
1/4 MILE RADIUS AERIAL MAP



TRAFFIC FLOW
ZOOM-IN OF JARVIS STATION

JARVIS STATION

Ridership: 1540/weekday
Initially Constructed: 1921
Platform Width: 12'



STATION AND VIADUCT



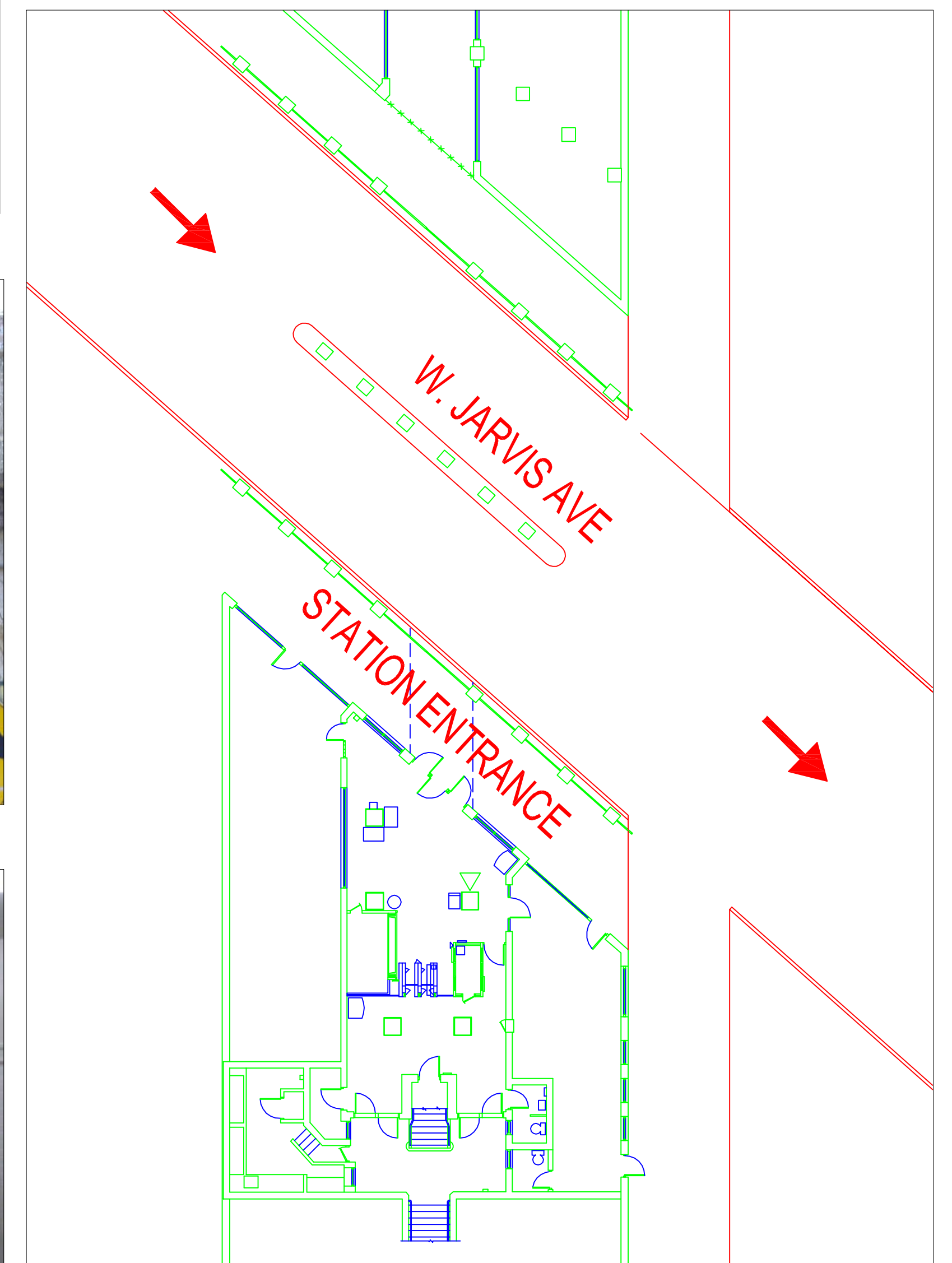
VIADUCT



PLATFORM

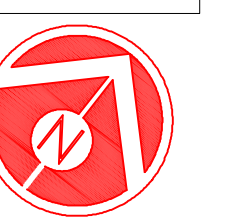


INSIDE THE STATION



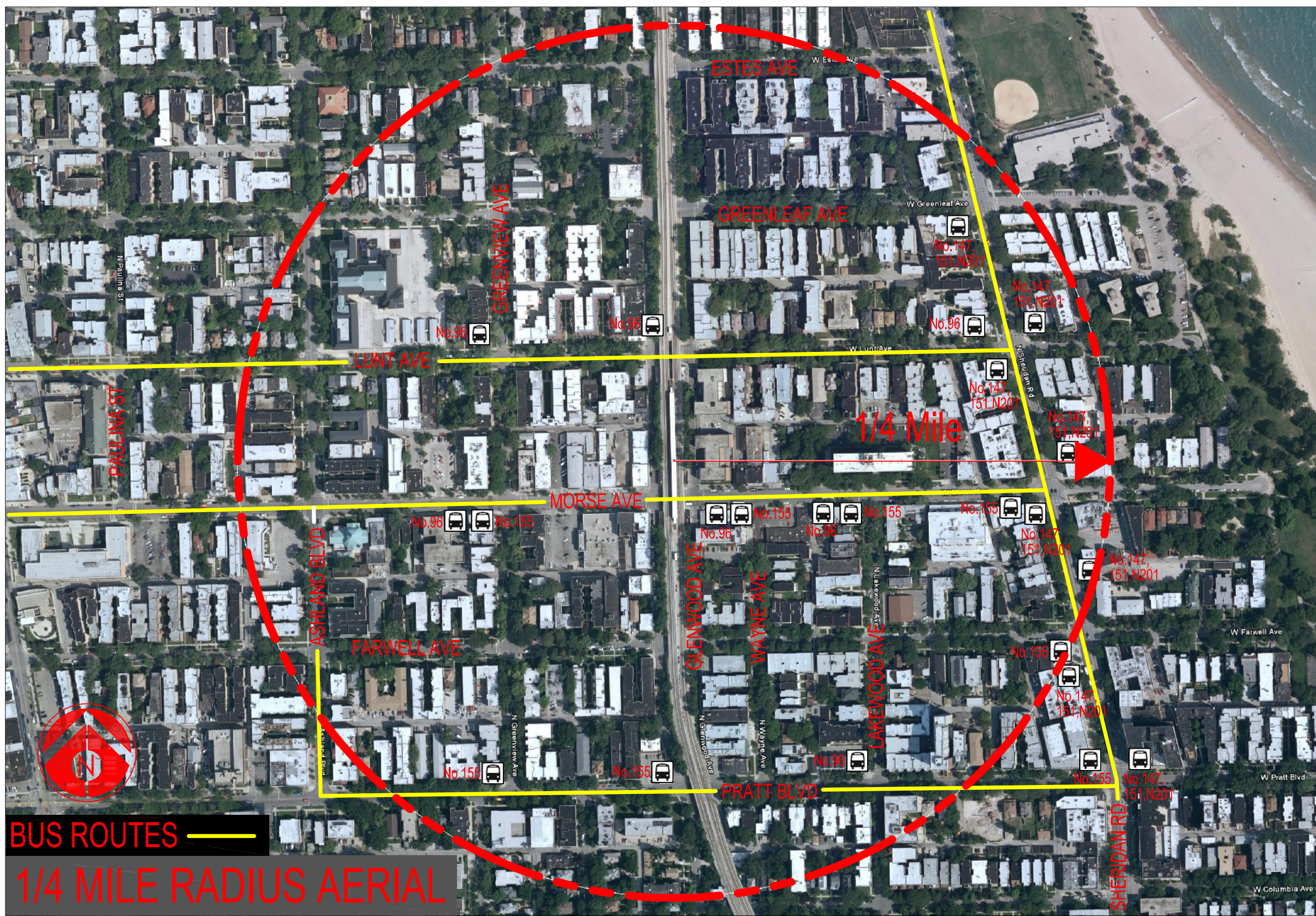
STATION FLOOR PLAN

0 8' 16' 32'
SCALE: 1/16" = 1'-0"





STATIONS: MORSE

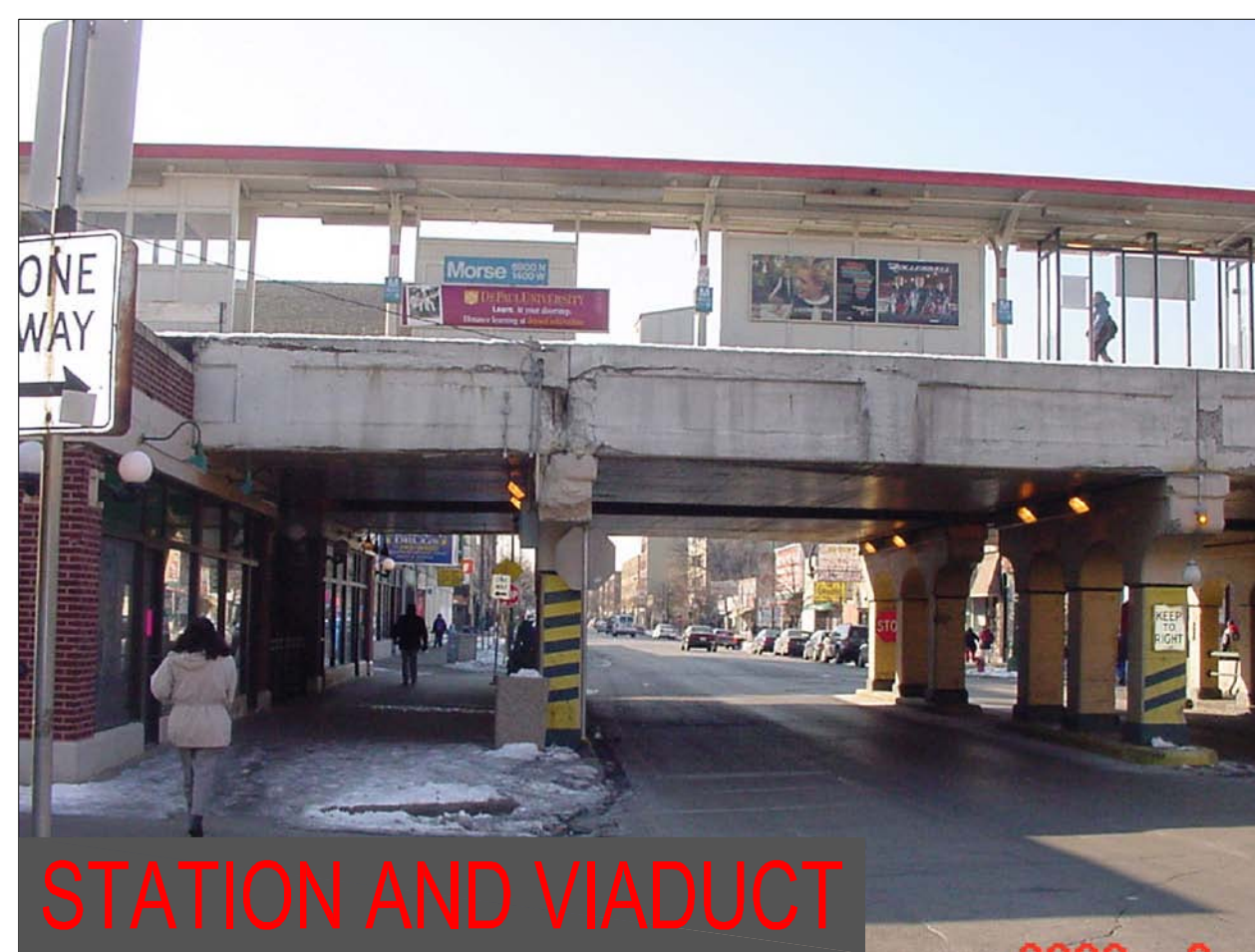
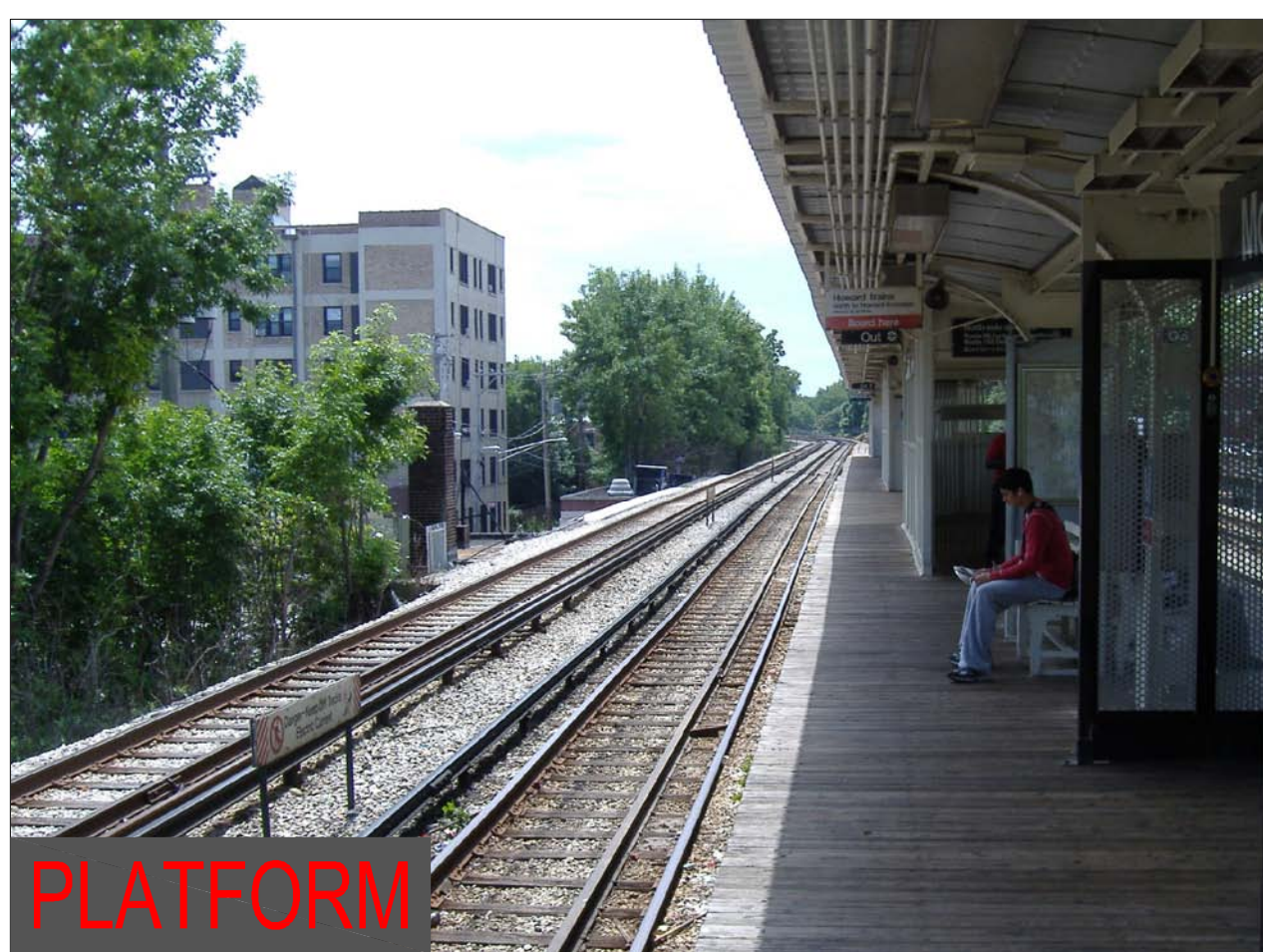
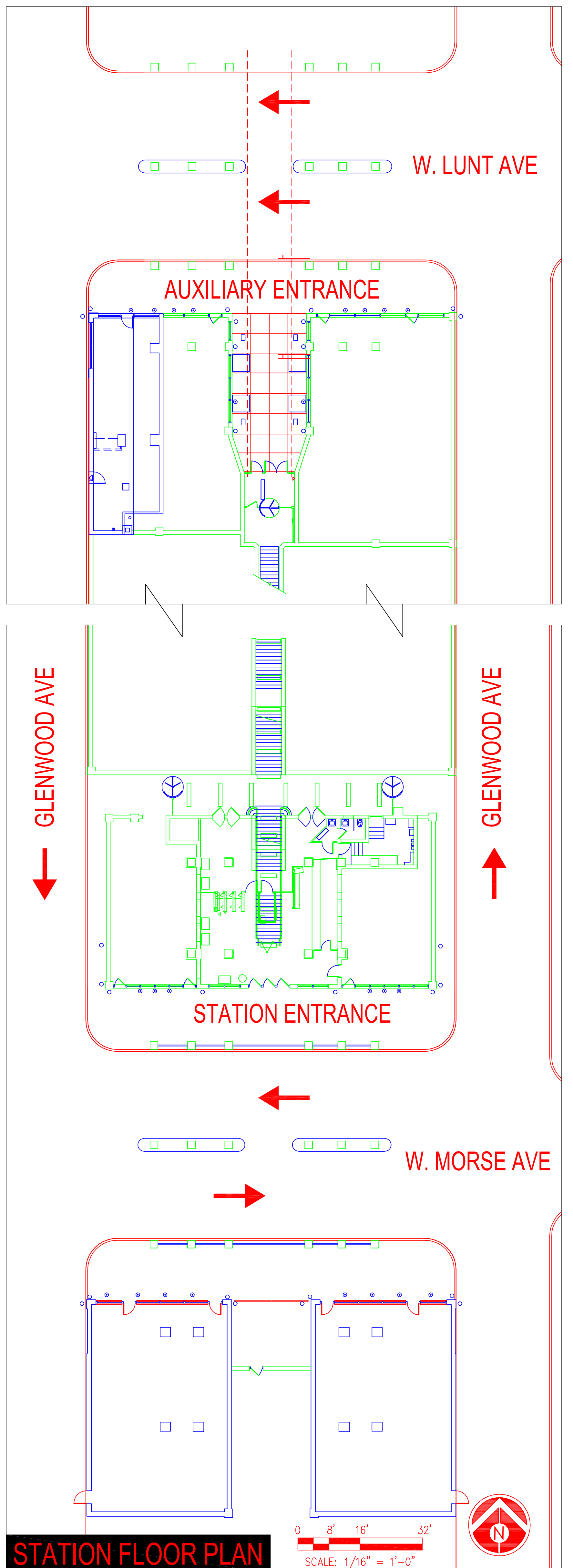


MORSE STATION

Ridership: 4400/weekday

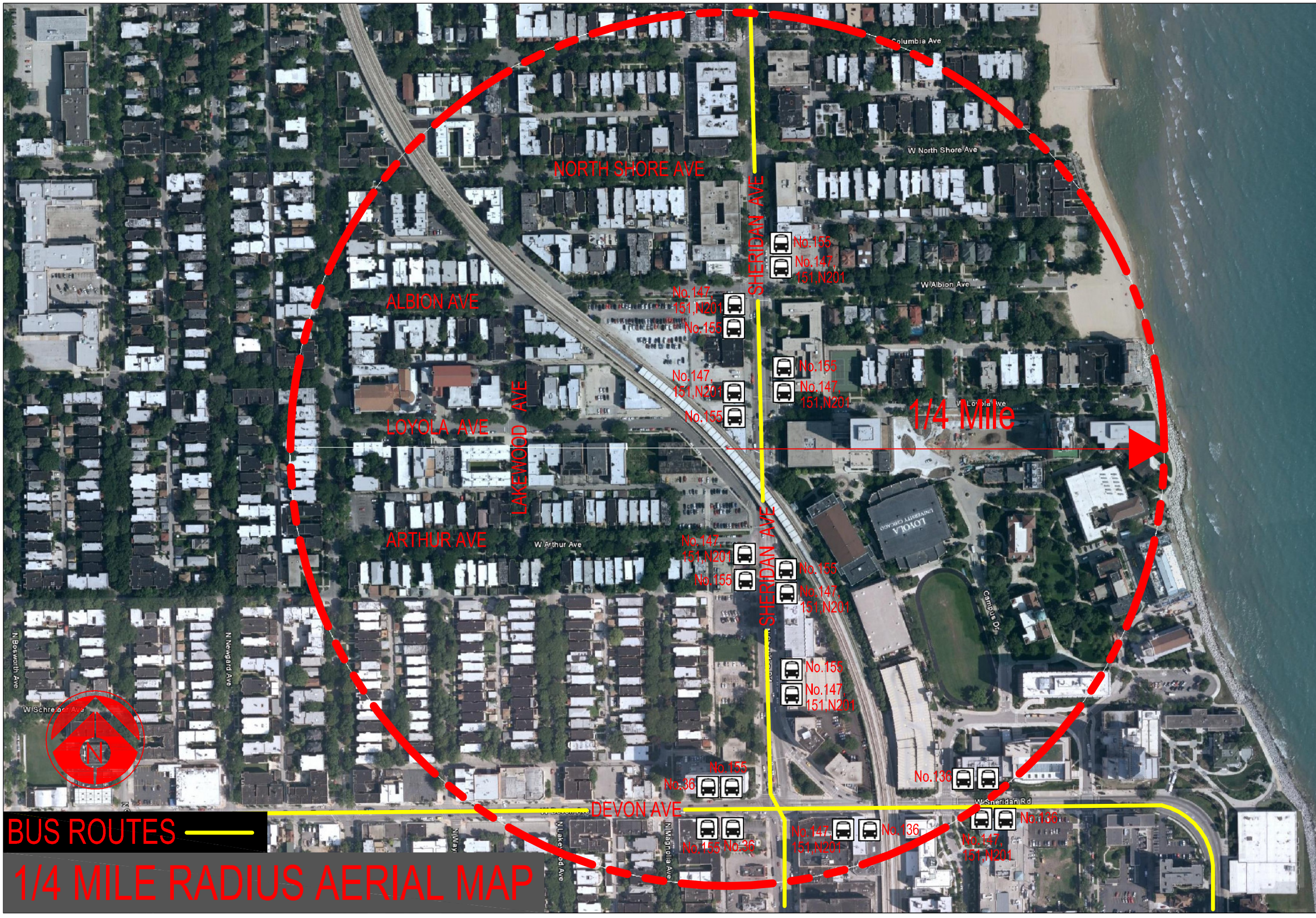
Initially Constructed: 1921

Platform Width: 7'-14'

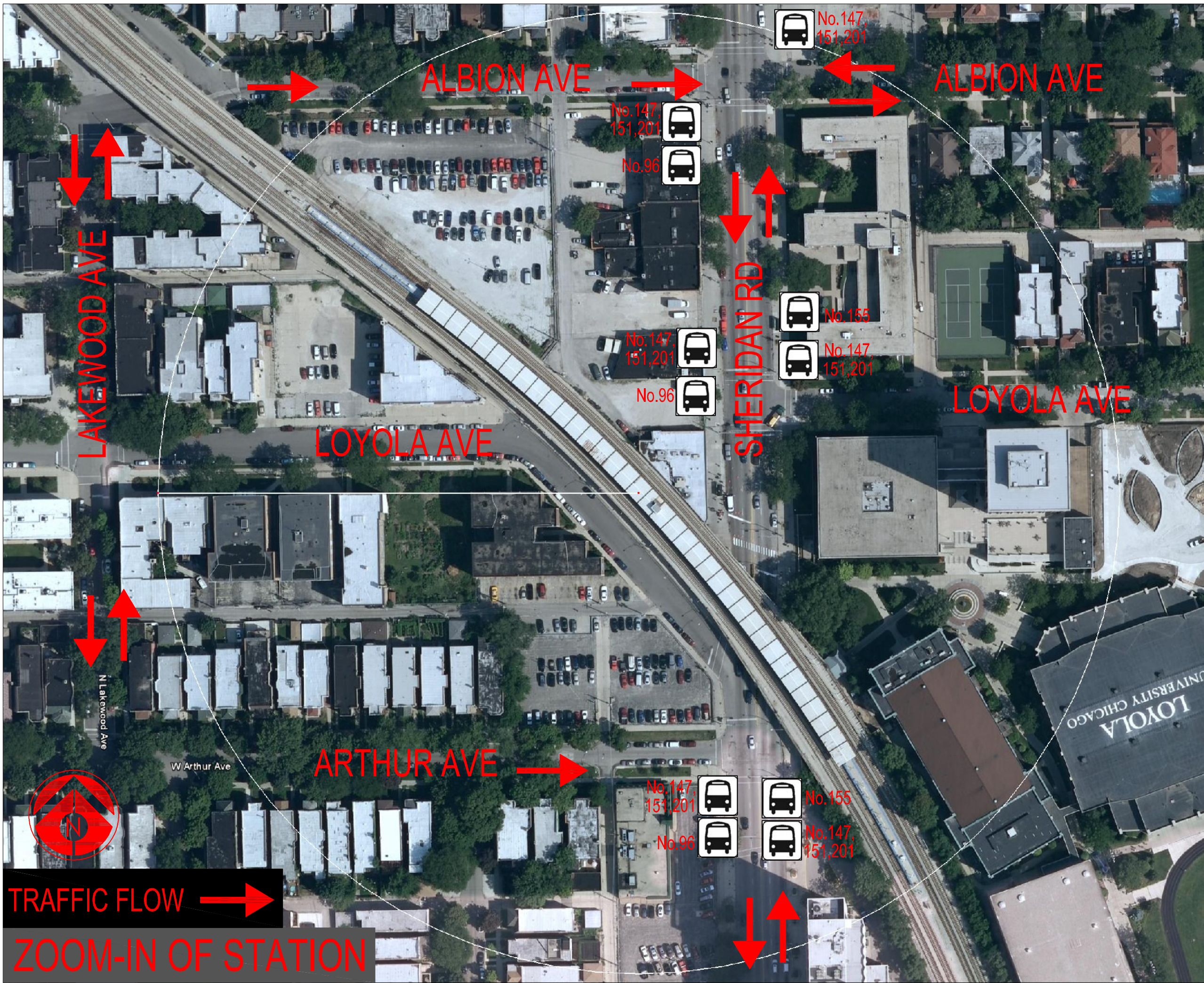




STATIONS: LOYOLA



BUS ROUTES
1/4 MILE RADIUS AERIAL MAP



TRAFFIC FLOW
ZOOM-IN OF STATION



STATION AND VIADUCT



STATION AND VIADUCT



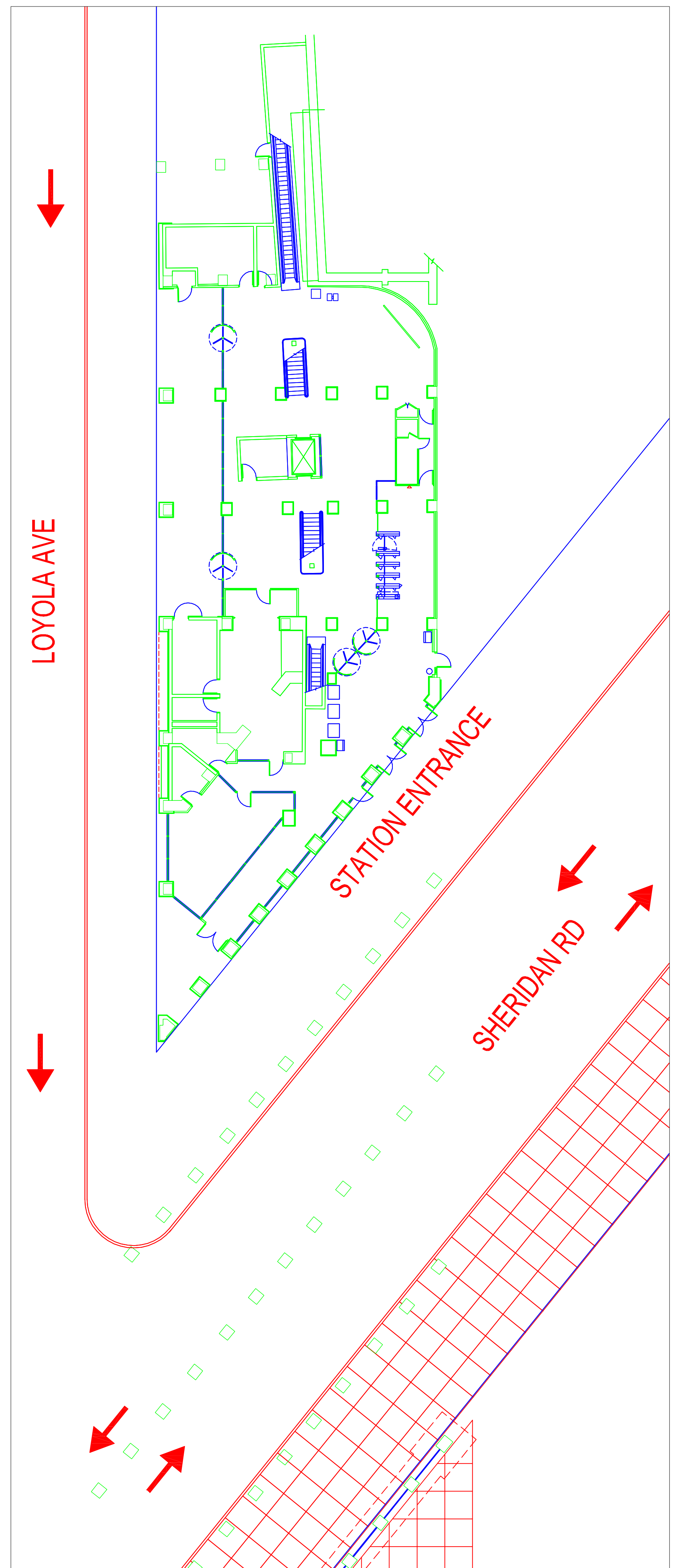
PLATFORM



INSIDE THE STATION

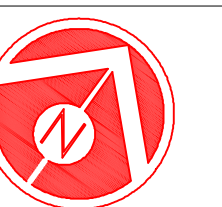
LOYOLA STATION

Ridership: 6160/weekday
Initially Constructed: 1921
Rehabilitation: 1982
Elevator: Yes
Platform Width: 9'-12'



STATION FLOOR PLAN

0 8' 16' 32'
SCALE: 1/16" = 1'-0"





STATIONS: GRANVILLE



GRANVILLE STATION

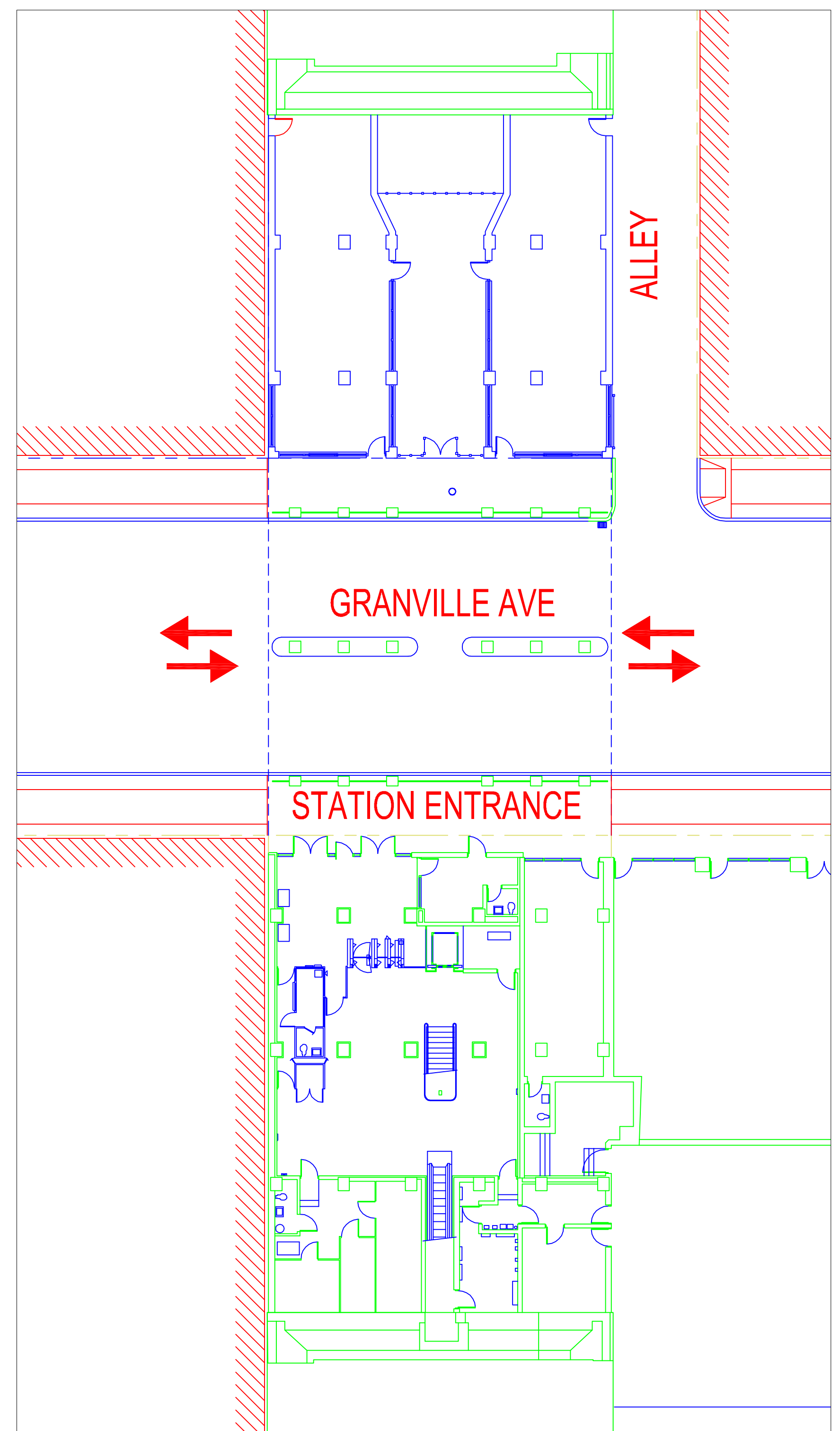
Ridership: 3890/weekday

Initially Constructed: 1921

Rehabilitation: 1980

Elevator: Yes

Platform Width: 12'



STATION FLOOR PLAN

0 8' 16' 32'
SCALE: 1/16" = 1'-0"

