

# **Construction Project Briefing**

**August 10, 2016**



# Today's Presentation

- **95<sup>th</sup> Street Terminal Improvement Program**
- **Wilson Transfer Station, Track, and Structure Reconstruction**
- **O'Hare Line – Addison, Irving Park, Montrose, Harlem and Cumberland Station Renovations (Your New Blue)**
- **Lake Line – Laramie to Harlem – Tactical Ballasted Trackwork Project**



# Project Title: 95<sup>th</sup> Terminal Improvement Program

Justification of Need:	The terminal is functionally obsolete and does not allow for optimal bus operations and pedestrian flow.
Priority of Project:	High
Total Project Budget:	\$280 M
Construction Contract Value:	Advance Package 1: \$ 2,482,588 Advance Package 2: \$24,697,210 Main Terminal Contract: \$180,000,000
Earned to Date:	Advance Package 1: 100% Advance Package 2: 95% Main Terminal Contract: 5%
Percent Change Orders to Construction Contract:	Advance Package 1: (0.3%) Advance Package 2: 7% Main Terminal Contract: 0%
Percent Time Used:	Advance Package 1: 100% Advance Package 2: 100% Main Terminal Contract: 22%
DBE:	Advance Package 1: Goal: 30% / Commitment: 35.19% / Current Attainment*: 37.26%  Advance Package 2: Goal: 30% / Commitment: 30% / Current Attainment*: 35.03%  Main Terminal Contract: Goal: 27% / Commitment: 27%  Outreach events conducted: 8  *Attainment is based on progress payments and may vary over the life of the project
Funding Source:	Federal, State, Bond



# Project Title: 95<sup>th</sup> Terminal Improvement Program

Estimated Start Date/Estimated Length of Project:	Advance Package 1: NTP Issued June 6, 2014 / 180 days Advance Package 2: NTP Issued July 24, 2014 / 661 days Main Terminal Contract: NTP Issued Nov 24, 2015 / 1118 days
AP1/AP2 Construction Manager/General Contractor:	Walsh / II in One JV
Main Terminal Contractor:	F.H. Paschen / Milhouse JV
Owners Representative:	Jacobs/SQN JV
Project Manager:	Katrina Denny (PM), Brittany Dyra (GM)

**Detailed Overview of Scope:**

The 95th Terminal Improvement Project will create new South and North terminal buildings at 95th on the Dan Ryan Red Line. The new terminal buildings will create a functional and efficient intermodal facility to enhance bus service and improve pedestrian safety. Scope includes the replacement and expansion of the terminal and platform and the addition of bus and pedestrian bridges. New administrative office space will be built and new bus bays will be provided around the terminal buildings.



# Project Title: 95<sup>th</sup> Terminal Improvement Program

Impact on Customers:	Track closures and weekend station closures during construction. Temporary relocation of certain bus operations to nearby streets during construction phasing.
Benefit to System:	Improved customer circulation and safety by relieving congestion. Improved bus service and improved pedestrian safety.
Benefit to Community:	Improved pedestrian safety with new pedestrian bridge over 95 <sup>th</sup> Street, longer train platform extending to the new South Terminal Building.
Impact on Accessibility:	New south and north terminal buildings with improved accessible routes to buses.
Estimated # of Jobs Created:	3,120 (Direct, Indirect and Induced), 652 (Direct)
Customer Communication Need:	Requires periodic track closures and possible station closures with bus shuttle service. Bus Operations may be relocated to adjacent streets during certain phases of construction.

<b>Comparable Projects:</b>
<ul style="list-style-type: none"> <li>Wilson Station</li> </ul>



# Project Title: 95<sup>th</sup> Terminal Improvement Program

## Construction Progress

Phase	Description	Status
<p><b>Construction</b> Advance Package 2: Dan Ryan Retaining Walls</p>	<ul style="list-style-type: none"> <li>▪ CTA issued Substantial Completion for Milestone 2 on May 15, 2016</li> <li>▪ Punchlist work is ongoing</li> </ul>	Ongoing
<p><b>Design/ Pre-Construction</b> Main Terminal Contract</p>	<ul style="list-style-type: none"> <li>▪ Design progression on Design Package 4: South Terminal and Design Package 5: North Terminal is ongoing</li> <li>▪ Contractor is evaluating various Trade Work Package (TWP) bids, such as Bridge Steel Procurement, South Terminal Building Steel, and Track/Systems</li> <li>▪ Bid solicitation is in process for General Trades, Elevator/Escalator Procurement, Electrical Switchgear Procurement, Dan Ryan Extended Lane Closure MOT and Traffic Control TWPs</li> <li>▪ Concurrence of Award (COA) 2 for Earthwork and Demolition was issued</li> </ul>	Ongoing
<p><b>Construction</b> Main Terminal Contract</p>	<ul style="list-style-type: none"> <li>▪ Initial construction submittals are under review</li> <li>▪ Construction to begin in 3<sup>rd</sup> Quarter 2016</li> </ul>	Ongoing

<b>Delay Explanation:</b>
N/A



# Project Title: 95<sup>th</sup> Terminal Improvement Program



**ComEd Utility Field Coordination**



# Project Title: 95<sup>th</sup> Terminal Improvement Program



**Contractor Field Office Set-Up Work**





# Project Title: Wilson Transfer Station, Track & Structure Reconstruction

Justification of Need:	The Station is functionally obsolete and does not allow for optimal transit operations.
Priority of Project:	High
Total Project Budget:	\$206 M
Construction Contract Value:	\$ 152,370,000
Earned to Date:	46% (through May)
Percent Change Orders to Construction Contract:	(0.8 %)
Percent Time Used:	59%
DBE:	Goal: 25% / Commitment: 27.52% Outreach events conducted: 1
Funding Source:	Federal, State, Bond and TIF
Estimated Start Date/Estimated Length of Project:	NTP 7/25/14; Substantial Completion 1/10/18
Designer of Record:	HNTB
Construction Manager/General Contractor:	Arcadis/Walsh/II In One JV
Project Manager:	Pedro Hurtado (PM), John Titzer (GM)

**Detailed Overview of Scope:** The station will replace the badly deteriorated station that was built in 1923. The station will have multiple entrances/exits and will include the following features:

- Two (2) new 26 foot – 10 car concrete island platforms with full canopies.
- New main station located on the south side of Wilson Ave., new auxiliary entrance/exit at Sunnyside Ave. and a new auxiliary entrance/exit on the north side of Wilson.
- New elevators, escalators, lighting, signage, fare control, security cameras and art work.
- Replace old existing elevated track structure with new track structure to accommodate the new station platform and the necessary infrastructure to support the new track alignment.



# Project Title: Wilson Transfer Station, Track & Structure Reconstruction

Impact on Customers:	There will be minimum impact to CTA customers
Benefit to System:	<ul style="list-style-type: none"><li>• New modern, more spacious and accessible stationhouse with three (3) entrances.</li><li>• Upgraded track structure infrastructure and signals for more reliable service.</li><li>• New transfer point between Red and Purple express rail lines.</li></ul>
Benefit to Community:	<ul style="list-style-type: none"><li>• Modern facility with new system upgrades.</li><li>• Easy access entrances through three (3) entry points.</li><li>• Bigger platforms that will accommodate higher capacity for passengers to avoid overcrowding.</li><li>• Platform canopies to protect customers from elements.</li><li>• New ADA accessible station.</li></ul>
Impact on Accessibility:	Station will be fully accessible upon completion.
Estimated # of Jobs Created:	560
Customer Communication Need:	<ul style="list-style-type: none"><li>• Construction activity notices will be provided to inform businesses and residents regarding temporary stations and construction impacts (noise, dust, street/alley impacts) throughout the project.</li></ul>

## Comparable Projects:

- 95<sup>th</sup> Station – Red Line



# Project Title: Wilson Transfer Station, Track & Structure Reconstruction

## Construction Progress

Phase	Description	Status
Construction	• Rebar installation for new track 2 concrete deck (first pour) is completed.	Completed
	• New structural concrete deck (1 <sup>st</sup> pour) for new track 2 is completed.	Completed
	• Concrete deck pour for new track 2 IDBT system continues (2 <sup>nd</sup> pour).	Ongoing
	• New west escalator and elevator installation continues.	Ongoing
	• New underground utility installation continues for main stationhouse .	Ongoing
	• Track installation at south and north ends of the open track deck continues.	Ongoing
	• Structural steel installation for the Sunnyside ramp is in progress.	Ongoing
	• Selective demolition at the Gerber building continues.	Ongoing

### Delay Explanation:

N/A



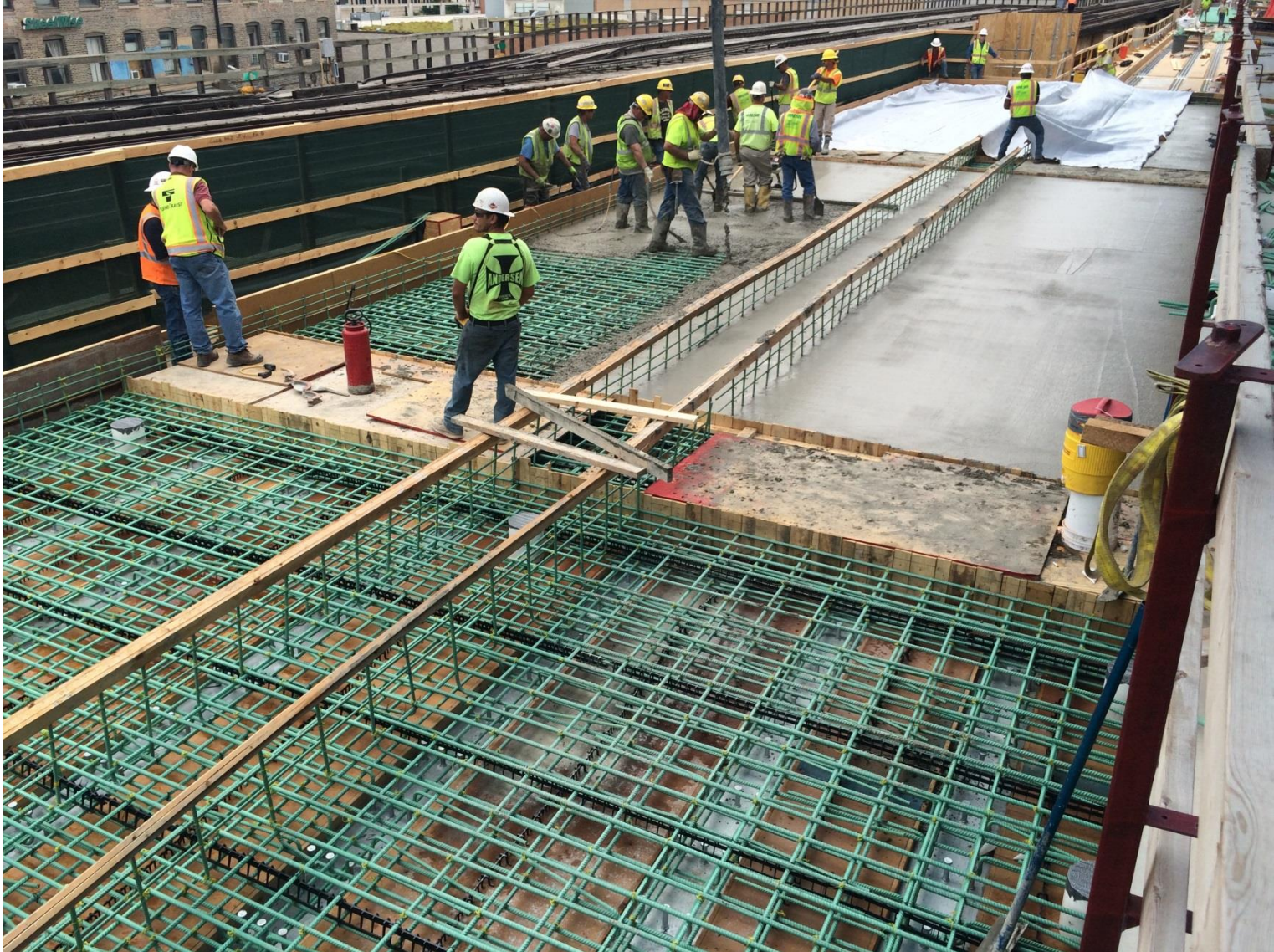
# Project Title: Wilson Transfer Station, Track & Structure Reconstruction



**New track 2 rebar installation for structural deck pour**



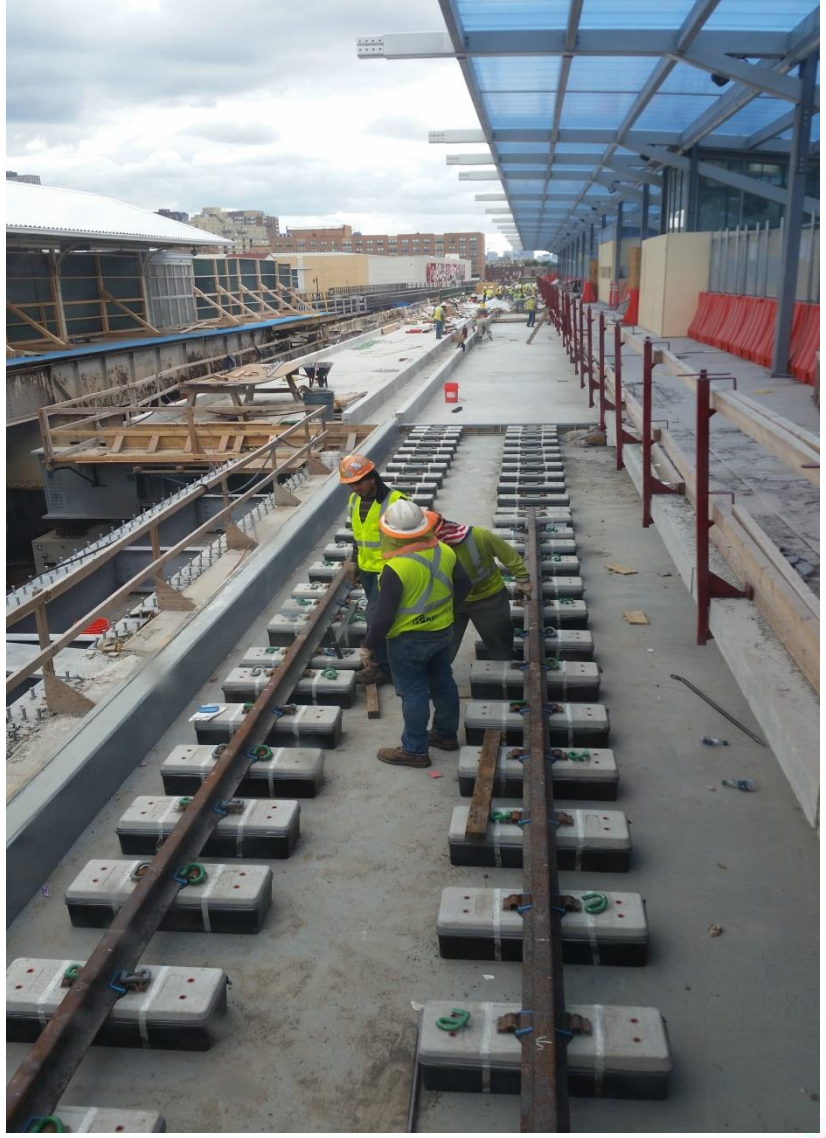
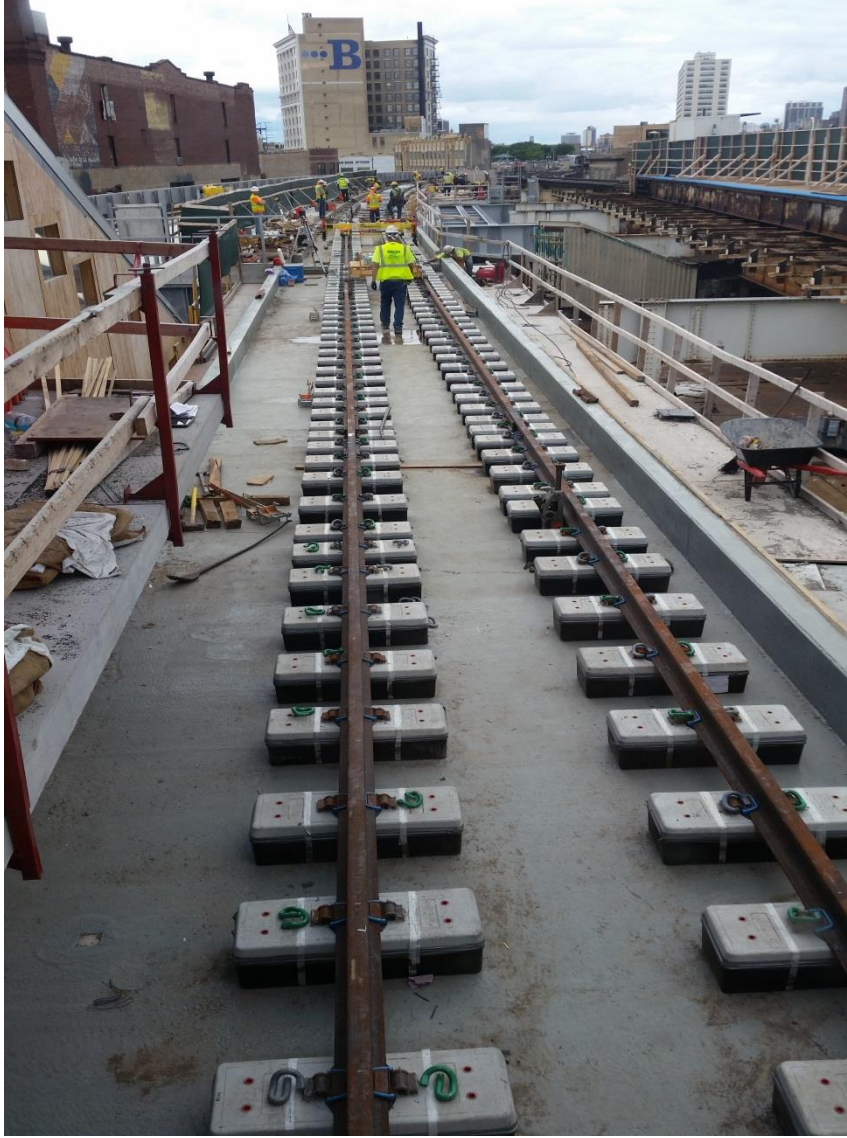
# Project Title: Wilson Transfer Station, Track & Structure Reconstruction



**New track 2 structural concrete pour (1<sup>st</sup> pour)**



# Project Title: Wilson Transfer Station, Track & Structure Reconstruction



**New Dual Block system layout for track 2**



# Project Title: O'Hare Line – Addison, Irving Park, Montrose, Harlem and Cumberland Station Renovations (Your New Blue)

Justification of Need:	To return the stations to a state of good repair. The Addison station will be made accessible with the addition of a new elevator.
Priority of Project:	High
Total Project Budget:	\$43,000,000
Construction Contract Value:	\$25,564,645
Earned to Date:	44% (thru Invoice #13, thru end of June)
% Change Orders to Construction Contract:	0%
Percent Time Used to Date:	79% (thru end of June)
DBE:	Goal: 26% / Commitment: 26% Outreach events conducted: 1 (CTA) 3 (FH Paschen)
Funding Source:	Federal, State, Bond
Estimated Start Date/Estimated Length of Project:	Design NTP – April 23, 2015 Start of Construction (+/-187 days after NTP) – November, 2015 Substantial Completion (540 days after NTP) – October, 2016
Designer of Record:	Muller and Muller
Construction Manager/General Contractor:	Parsons Brinckerhoff (CM), / F.H. Paschen, S.N. Nielson (GC)
Project Manager:	Steven Mascheri (GM); Mario Battle (PM)

## Detailed Overview of Scope:

The O'Hare Line- Addison, Irving Park, Montrose, Harlem and Cumberland Station Renovation Project will upgrade five stations along the O'Hare Blue Line. The project goals are to improve reliability, increase capacity and reduce travel time from downtown to the O'Hare airport station. The Addison station will receive an additional upgrade of an elevator to add accessibility for people with disabilities. All stations will receive new platform edge and topping replacement. Platform furniture will be rehabilitated and replaced as needed. Light fixtures will be provided with new lamps & ballasts, in addition all five stations are to be painted.



# Project Title: O’Hare Line – Addison, Irving Park, Montrose, Harlem and Cumberland Station Renovations (Your New Blue)

Impact on Customers:	<ul style="list-style-type: none"> <li>• 146 maximum nightly single track occurrences.</li> <li>• 21 maximum weekend single track occurrences. Weekend station closures at Addison (4) and Montrose (2).</li> <li>• Partial platform closures (longitudinal).</li> <li>• Various station entrance closures at Irving Park, Cumberland, and Montrose.</li> </ul>
Benefit to System:	Extensive renovations at all stations. Addison station will become ADA compliant.
Benefit to Community:	Improved reliability, safety and accessibility.
Impact on Accessibility:	Improves accessibility by providing elevator at Addison.
Estimated # of Jobs Created:	Approximately 75
Customer Communication Need:	Construction activity notices will be needed to alert customers, businesses and residents to weekend and night work occurrences. Extensive communication will be required for weekend closures and for extended partial platform closures.

<b>Comparable Projects:</b>
<ul style="list-style-type: none"> <li>• Red Line South Dan Ryan station renovations.</li> </ul>





# Project Title: O’Hare Line – Addison, Irving Park, Montrose, Harlem and Cumberland Station Renovations (Your New Blue)

## Construction Progress

Phase	Description	Status
Addison	<ul style="list-style-type: none"> <li>• Platform Extension</li> <li>• Rehabilitation of Platform concrete</li> <li>• Installation of new staircase from stationhouse to platform level</li> <li>• Relocation of Customer Assistant Kiosk</li> <li>• Installation of new elevator pit</li> </ul>	Complete Complete Complete Ongoing In Progress
Montrose	<ul style="list-style-type: none"> <li>• Rehabilitation of Platform concrete</li> <li>• Canopy and Station painting</li> <li>• Installation of Platform furniture</li> <li>• Installation of light fixtures</li> </ul>	Complete Complete In Progress In Progress
Irving Park	<ul style="list-style-type: none"> <li>• Rehabilitation of South bound Platform concrete</li> <li>• Rehabilitation of North and South Auxiliary walkways</li> </ul>	Complete In Progress
Harlem	<ul style="list-style-type: none"> <li>• Installation of temporary lighting at bus canopy and station house</li> </ul>	In Progress

### Delay Explanation:

N/A



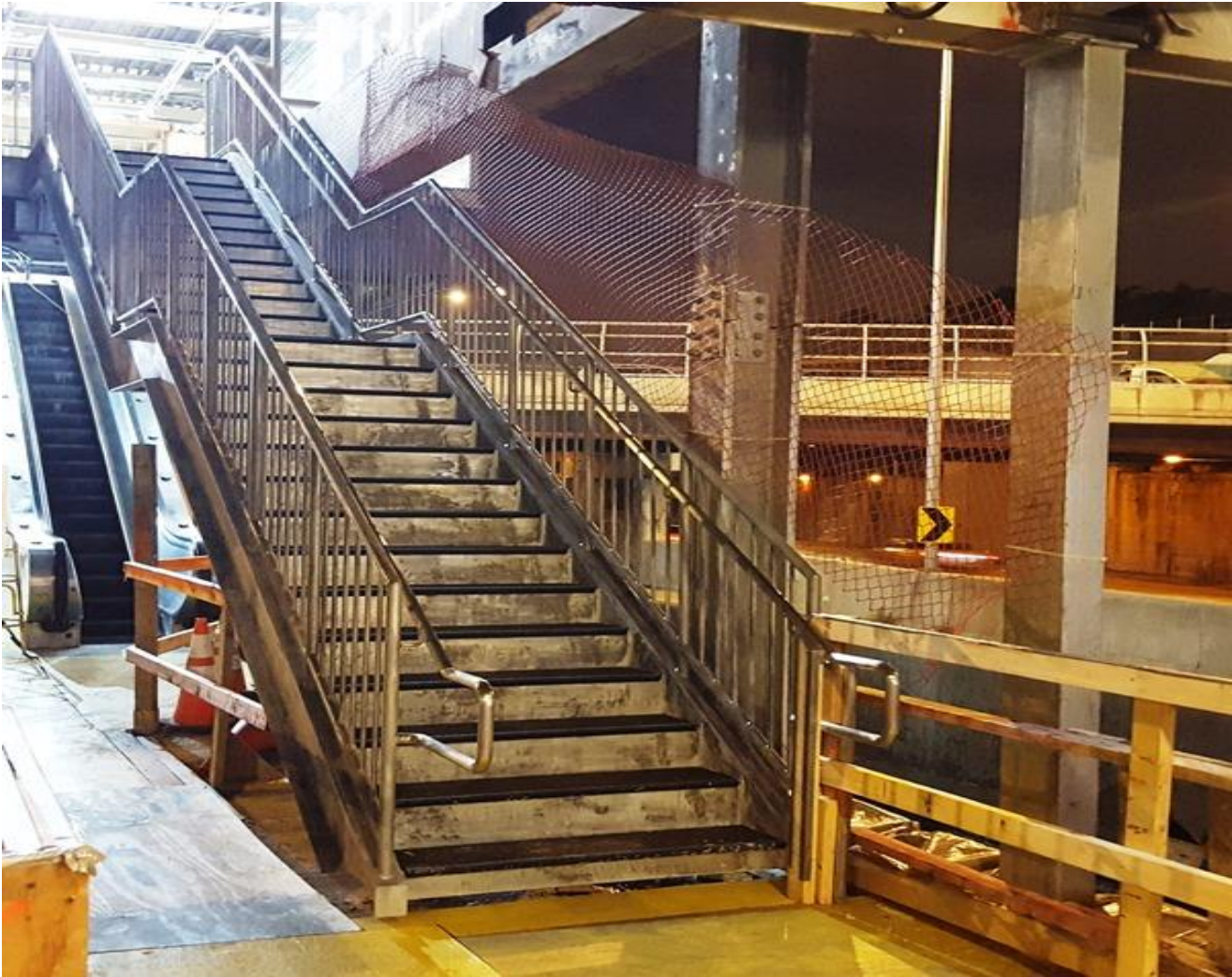
# Project Title: O'Hare Line – Addison, Irving Park, Montrose, Harlem and Cumberland Station Renovations (Your New Blue)



**New southbound platform at Irving Park**



# Project Title: O'Hare Line – Addison, Irving Park, Montrose, Harlem and Cumberland Station Renovations (Your New Blue)



**New stairs at Addison Station**



# Project Title: Lake Line – Laramie to Harlem – Tactical Ballasted Trackwork Improvements

Justification of Need:	The last major renewal of these tracks occurred in the early-mid 1980's. Aside from the spot replacement of a few ties along this track, the majority of ties are reaching the end of their useful life.
Priority of Project:	High
Total Project Budget:	\$22,903,332
Construction Contract Value:	\$12,981,954
Earned to Date:	95% (Work Substantial Complete in June 2016)
% Change Orders to Construction Contract:	0%
DBE:	Goal: 25% / Commitment: 25.31% / Current Attainment*: 22.95% Outreach events conducted: 1  *Attainment is based on progress payments and may vary over the life of the project. Contract still has pending payments that could affect the DBE attainment.
Percent Time Used to Date:	61%* (Work Substantial Complete in June 2016)
Funding Source:	CTA Bonds
Estimated Start Date/Estimated Length of Project:	NTP – December 22, 2015 Substantial Completion (365 days after NTP) – December 21, 2016* *Work Substantial Complete in June 2016
Designer of Record:	CTA Engineering
Construction Manager/General Contractor:	STV (CM) / Kiewit Infrastructure (GC)
Project Manager:	Barney Gray (GM); Grace Ohs (PM)



# Project Title: Lake Line – Laramie to Harlem – Tactical Ballasted Trackwork Improvements

## Detailed Overview of Scope:

- Replacement of timber ties, plates and fasteners. 100% of ties on Track 1 and approximately 75% of ties on Track 2.
- Restoration of track alignment, profile and cross-leveling.
- Ballast removal, grading, replacement, compaction and dressing.
- Replacement of contact rail chairs.
- Rail transposition, welding of joints, and rail grinding.

Impact on Customers:

There will be some noise while work is being performed. Weekend Line Cuts from Laramie to Harlem Station. Bus Shuttle will operate between closed stations.

Benefit to System:

Reduced maintenance cost and slow zone mitigation.

Benefit to Community:

Improved reliability, smoother ride, and prevention of future slow zones.

Impact on Accessibility:

None.

Estimated # of Jobs Created:

40

Customer Communication Need:

The Village of Oak Park and City of Chicago Aldermen have been notified. Construction Activity Notices will be distributed to alert businesses and residents.

## Comparable Projects:

- NA



# Project Title: Lake Line – Laramie to Harlem – Tactical Ballasted Trackwork Improvements

## Construction Progress

Phase	Description	Status
Construction	<ul style="list-style-type: none"> <li>• Completed installation of approximately 11,000 ties.</li> <li>• Weekend Line Cuts Complete:                             <ul style="list-style-type: none"> <li>April 1– 4, 2016</li> <li>April 15–18, 2016</li> <li>April 22-25, 2016</li> <li>April 29-May 2, 2016</li> <li>May 6-9, 2016</li> <li>May 13-16, 2016</li> <li>May 20-23, 2016</li> </ul> </li> </ul>	Complete
Closeout	<ul style="list-style-type: none"> <li>• Punch List Work is approximately 80% complete.</li> </ul>	On-going

### Schedule Revision Explanation:

- Contractor substantially completed work approximately 6 month ahead of the Contract Milestone date of December 21, 2016.



# Project Title: Lake Line – Laramie to Harlem – Tactical Ballasted Trackwork Improvements



**Completed Trackwork – Near Central Station (Facing East)**