



LAWRENCE TO BRYN MAWR MODERNIZATION:

START OF STAGE B

CONSTRUCTION



TOWN HALL MEETING JUNE 21 & 22, 2023

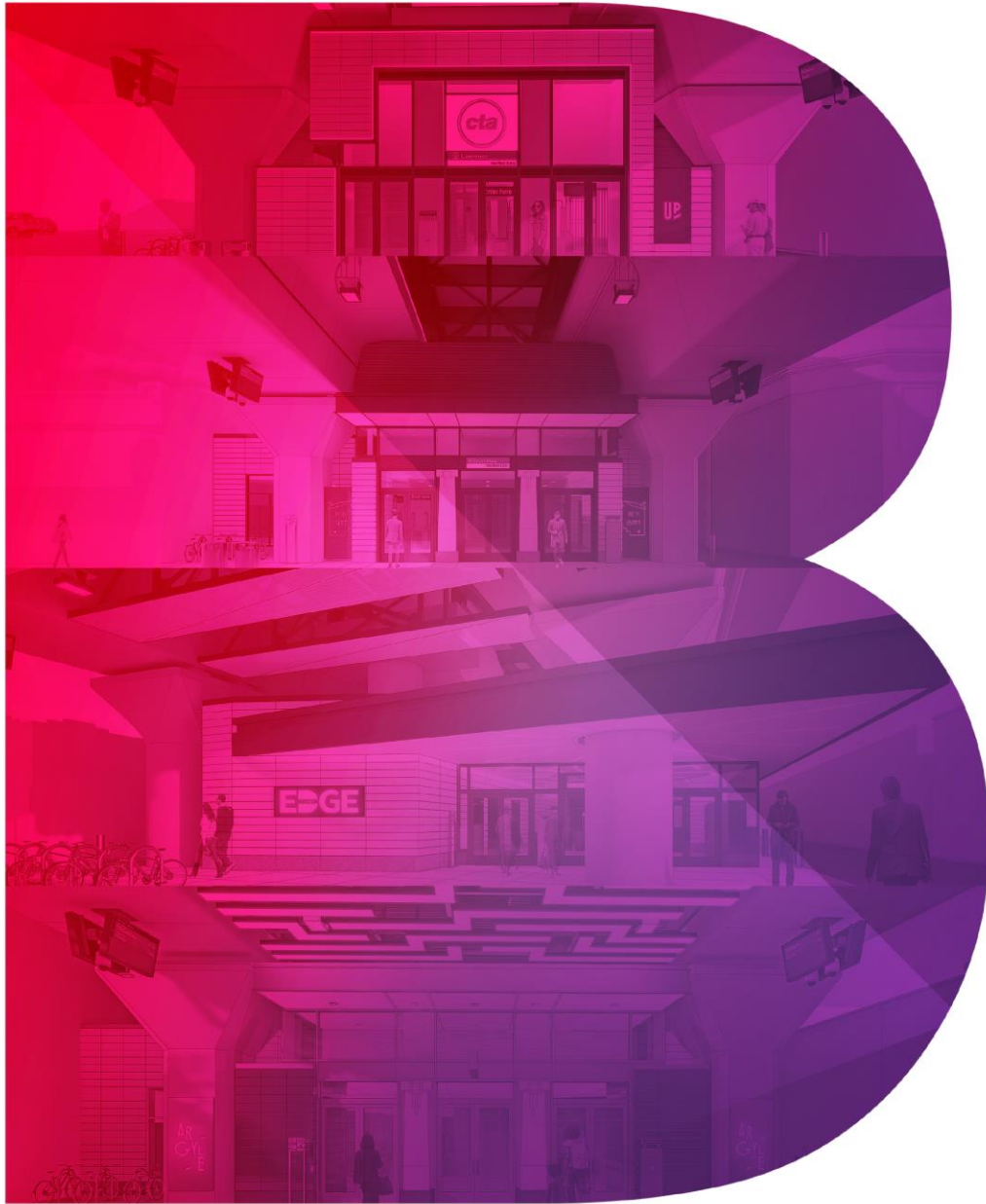
RPM Phase One: Overview

Lawrence to Bryn Mawr Modernization

Red-Purple Bypass

Corridor Signal Improvements





We are rebuilding Lawrence, Argyle, Berwyn and Bryn Mawr

- Modern, fully-accessible stations
- Elevators
- Escalators
- Rebuild track structures and remove old embankment wall

LAWRENCE TO BRYN MAWR MODERNIZATION:

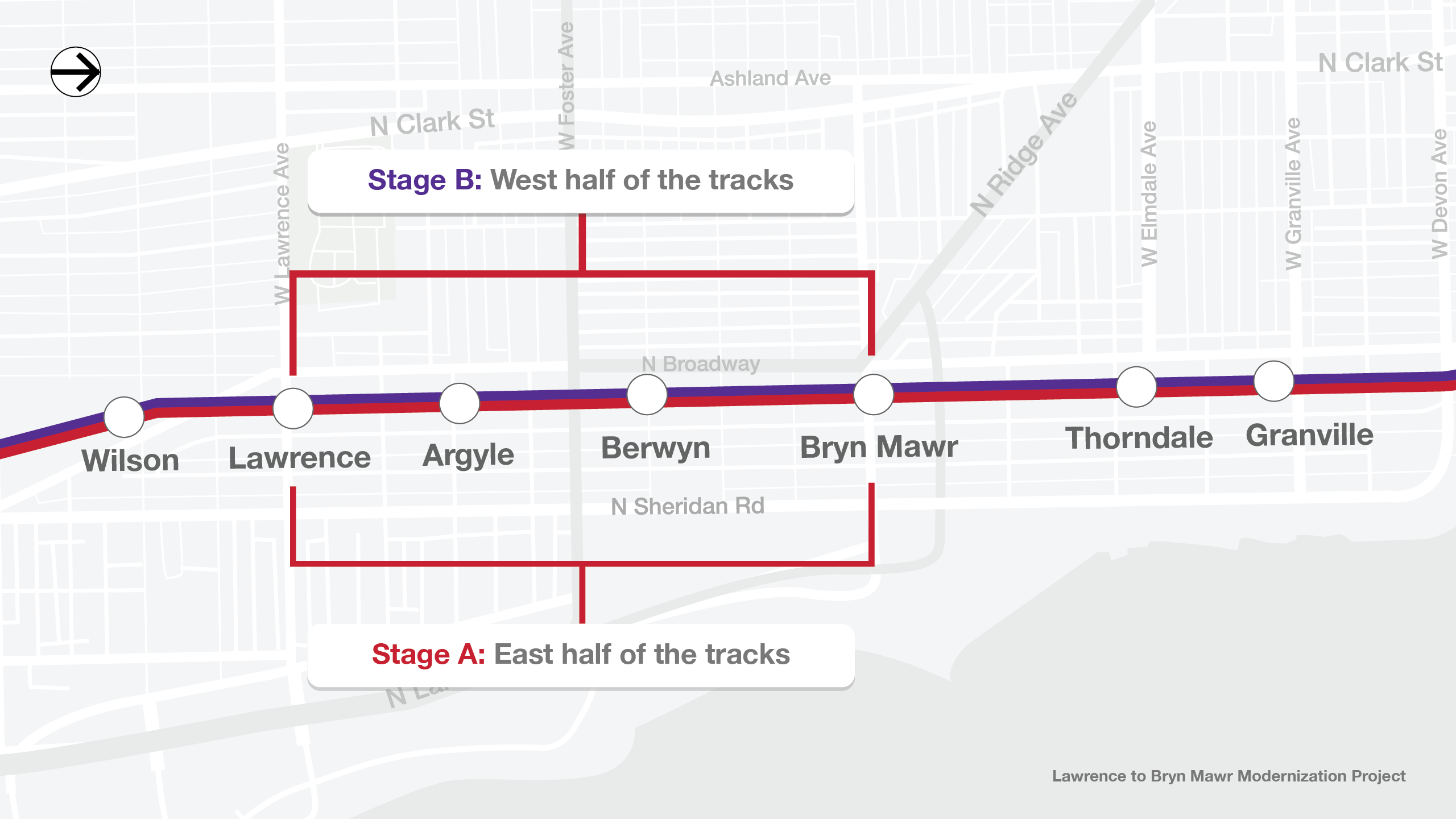
PROJECT TIMELINE



Construction Approach

- Rebuilding will occur in two stages: Stage A and B.
- We will continue to provide train service during the construction process.
- We will rebuild what will be the new 95th-bound tracks, while running Red and Purple line trains on the newly built tracks put into service this summer.





Stage B: West half of the tracks

Stage A: East half of the tracks

Wilson

Lawrence

Argyle

Berwyn

Bryn Mawr

Thorndale

Granville

Demolish 100-year old structures



Drill new track foundations



Build the new tracks







NORTHERN
CRANE LLC

AT 450

SAFETY
BUMA

92X5412



CLEARANCE
12-0"

KEEP
→
RIGHT

EDGE

Community Impacts and Mitigations

Demolition equipment selected to minimize vibration

Dust control and street sweeping

Metered truck traffic to reduce traffic backups

Some alley and street closures

Major cross-street closures limited to weekends only

Alternate parking for affected residents

We will continue to notify the community of upcoming construction activities via Construction Activity Notices (CANs) in print and online. Sign up for alerts at transitchicago.com/rpmaalerts.



Remaining Stage A work

Completing and testing the new tracks

Testing our new rail signal system

Completing the new Stage B temporary stations for Argyle and Bryn Mawr





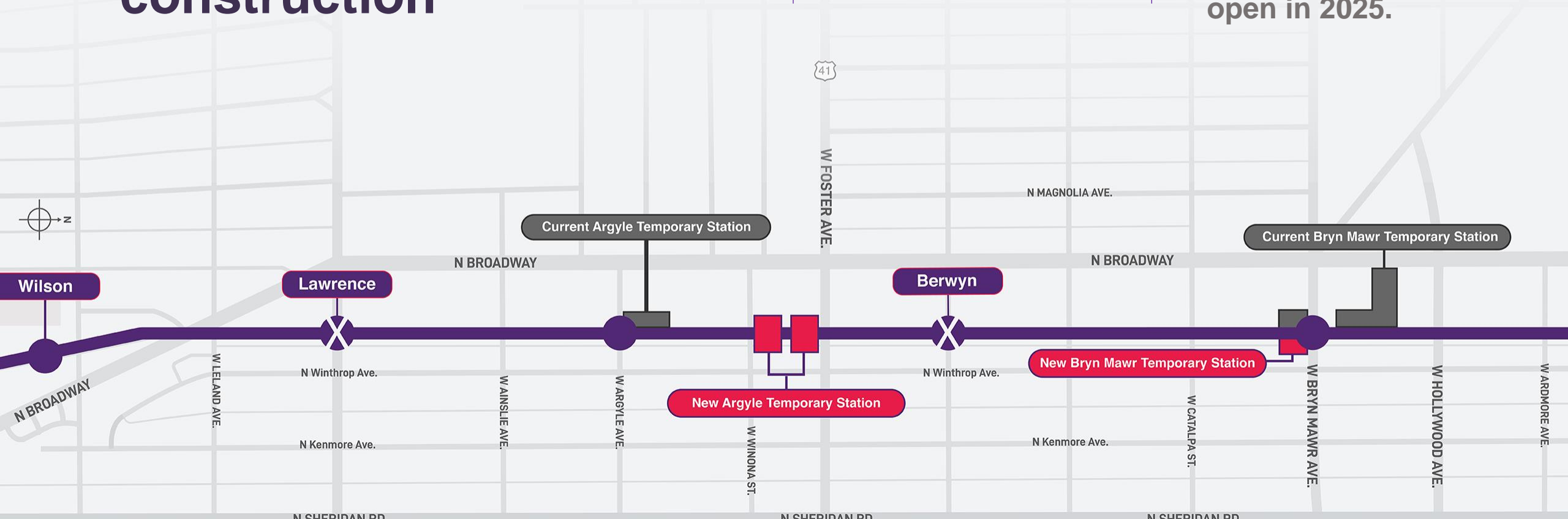
CTA SERVICE DURING STAGE B CONSTRUCTION

Rail service access for customers during construction

During construction, Lawrence and Berwyn will remain closed.

Customers can access Argyle and Bryn Mawr via temporary station entrances (note that Bryn Mawr will be 95th-bound only).

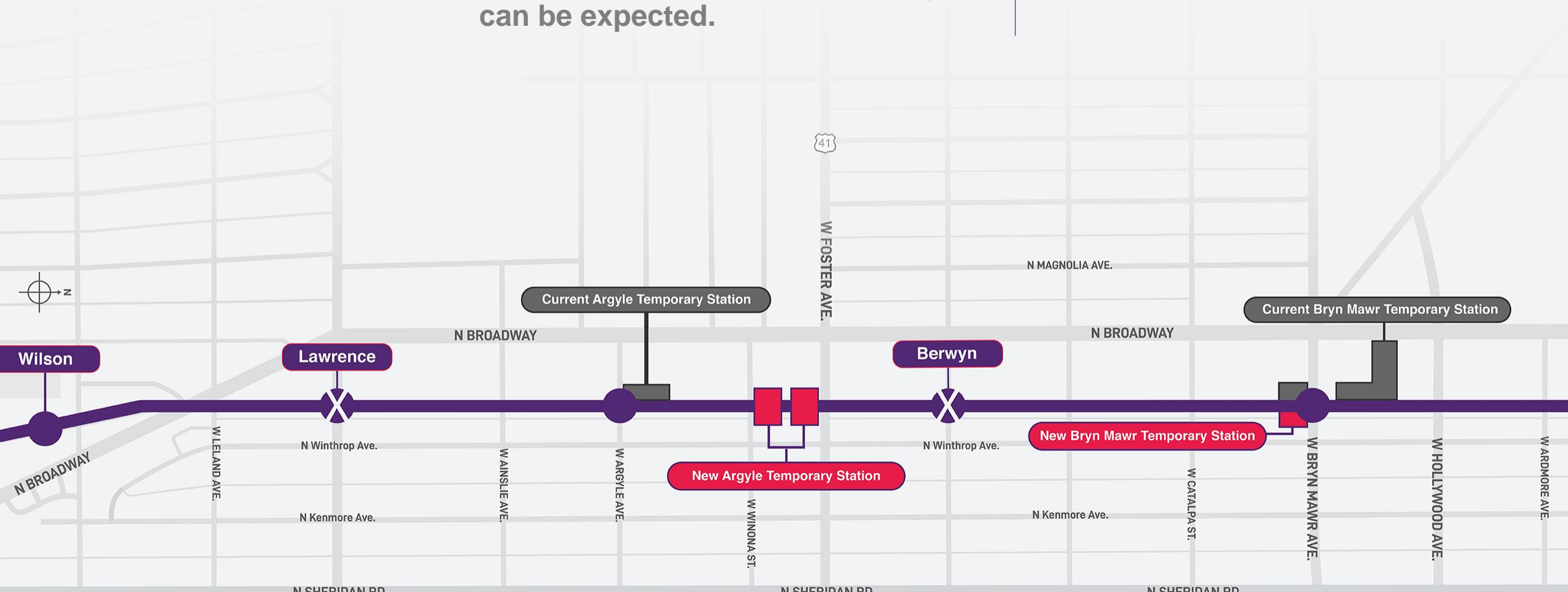
The temporary stations will serve passengers until the new stations are completed. New stations are anticipated to open in 2025.



Rail service impacts

Because four tracks of Red and Purple line traffic will be merged onto two tracks during construction, **service will be affected and delays can be expected.**

We are encouraging our customers to **plan ahead** and allow for extra travel time.



If your station is

Lawrence

Station will remain closed until the new station opens in 2025.

Access the Red Line by walking to Wilson station $\frac{1}{4}$ mile south, taking the #81 bus from W. Lawrence Ave. & N. Broadway to Wilson station or walking north to the new Stage B Argyle temporary station entrance on W. Winona St.

#36 Broadway bus also connects these stations.



If your station is

Argyle

The temporary station will be moved to create room to build the new Argyle station.

The new location was selected as the space allows for both Howard-bound and 95th-bound service.

The new temporary station entrances are located one block north at W. Winona St. and W. Foster Ave.

#92 Foster will connect at the W. Foster Ave. station entrance.

The new station is expected to open in 2025.





Argyle Red Line temporary station entrance on W. Winona St.

Image facing north



Argyle Red Line temporary station entrance on W. Foster Ave.

Image facing south

If your station is

Berwyn

Station will remain closed until the new station opens in 2025.

Use the temporary Argyle station less than $\frac{1}{4}$ mile south on W. Foster Ave.

#36 Broadway bus also connects these stations.



If your station is

Bryn Mawr

The temporary station entrance will be moved to the east side of the tracks on W. Bryn Mawr Ave. and will only provide 95th-bound service.

There will be no Howard-bound service at the temporary Bryn Mawr station as there is not sufficient space to build a temporary 8-car platform for Howard-bound trains.

To access Howard-bound service –

- Ride the train south to Argyle to connect to the Howard-bound train.
- Use the Thorndale station three blocks north.
- To exit a Howard-bound train at Bryn Mawr, take the train north to Thorndale, exit the train and then board a 95th-bound train back to Bryn Mawr.



If your station is

Bryn Mawr

#84 Peterson buses will drop off passengers at Bryn Mawr and be rerouted to connect with the Thorndale station.

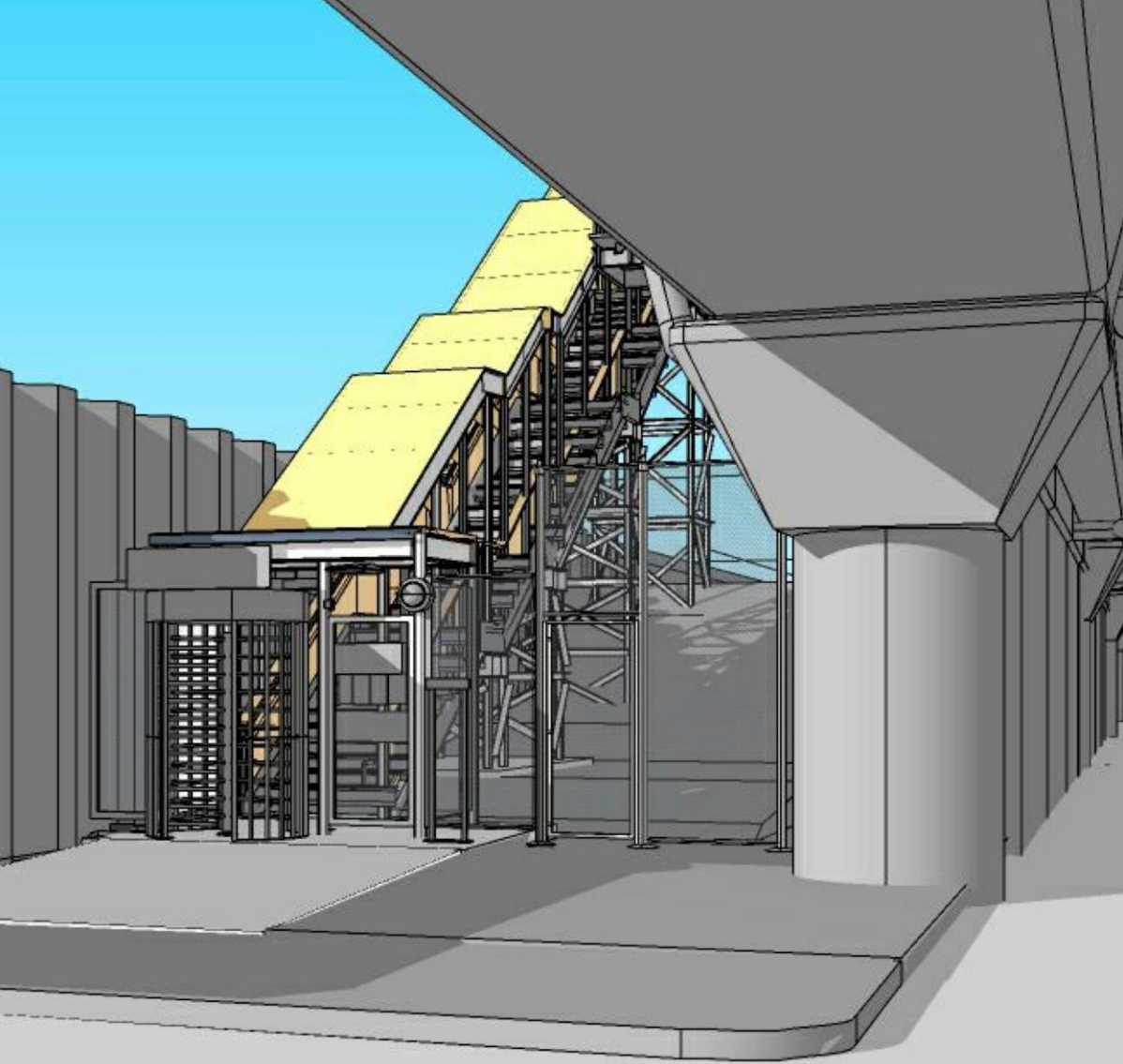
#92 Foster buses will no longer go to Bryn Mawr and will resume normal service on Berwyn.

The new station is expected to open in 2025.



Bryn Mawr Red Line temporary station: entrance on W. Bryn Mawr Ave., 95th-bound-only service





**Bryn Mawr Red Line
temporary station:**
exit-only on W. Catalpa Ave. for 95th-
bound-only service

Bus service route changes to access Red Line

#81 Lawrence

Reroute to the Wilson station will continue in Stage B

#84 Peterson

Reroute to connect with both Bryn Mawr Stage B temporary station (95th-bound-only service) and Thorndale station (with Howard-bound and 95th-bound service)

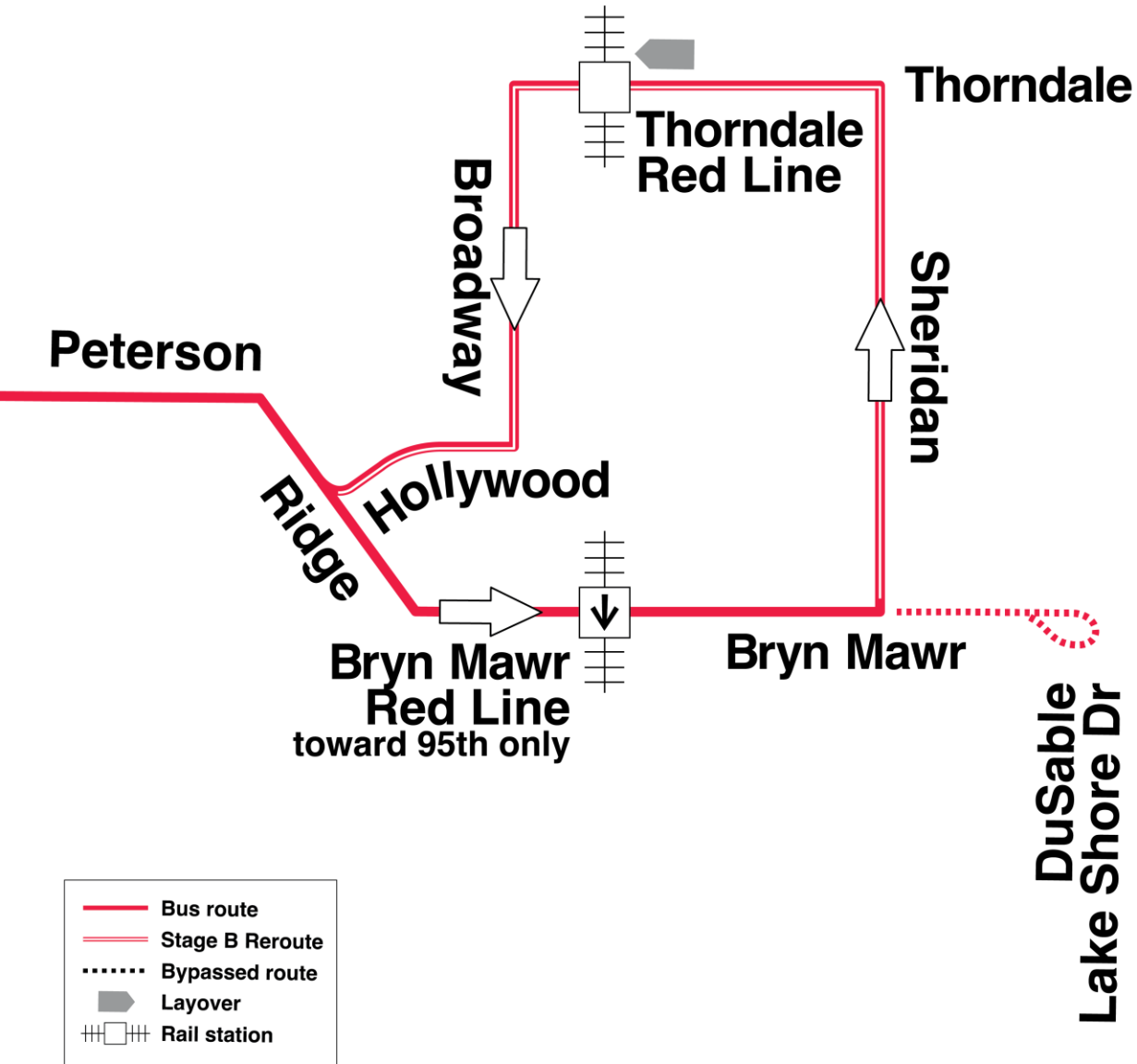
#92 Foster

Resume normal route, connect to W. Foster Ave. end of Argyle Stage B temporary station

#146 Inner Lake Shore/Michigan Express

Continue its stop/layover at W. Berwyn Ave. & N. Broadway

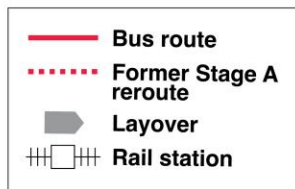
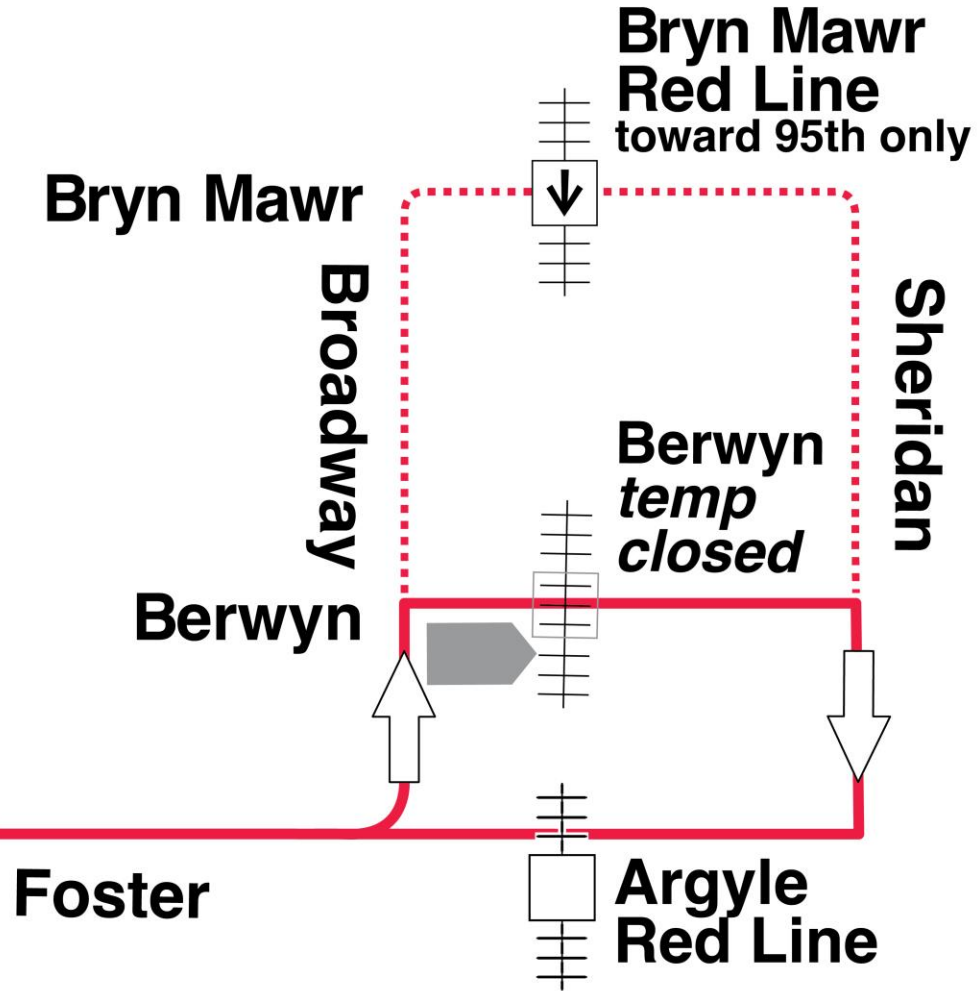




Bus service route changes to access Red Line

#84 Peterson will be rerouted to connect with both Bryn Mawr Stage B temporary station (95th-bound-only service) and Thorndale station





Bus service route changes to access Red Line

#92 Foster bus will resume normal route, connecting to the W. Foster Ave. end of Argyle Stage B temporary station



How we are communicating with the public

Community meetings

Virtual monthly “office hours”

Regular construction updates via e-blast and on the transitchicago.com/RPM website

Construction Activity Notices (CANs) – paper and digital

RPM social media accounts, @CTARPM on Facebook, Instagram and Twitter

RPM ambassadors at stations

Interactive RPM construction impacts map





Upcoming: **Embankment Removal Meetings**

We expect to host meetings later this year to hear your input on what you'd like to see under the tracks.

Staying Informed

Red & Purple Line Service Updates

transitchicago.com/updates

Website

transitchicago.com/rpm

General Information

RPM@transitchicago.com

Construction Alerts & Virtual Office Hours

transitchicago.com/rpmalerts

Email us

rpm@transitchicago.com

Call us

331-303-2499 to leave a message for a call back
or CTA Customer Service: 888-YOUR-CTA

Visit us

RPM Community Office

5137 N. Broadway, Chicago, IL 60640



Follow us:
@CTARPM

