

# All Stations Accessibility Program (ASAP) Strategic Plan

## APPENDIX A FEDERAL REGULATORY OVERVIEW



## APPENDIX A: FEDERAL REGULATORY OVERVIEW

Three significant federal laws and regulations govern public transportation accessibility for people with disabilities:

- Section 504 of the 1973 Rehabilitation Act (1973)<sup>1</sup>;
- Americans with Disabilities Act (1990)<sup>2</sup>; and
- Department of Transportation regulations<sup>3</sup>.

### 1973 REHABILITATION ACT (SECTION 504)

The 1973 Rehabilitation Act was the first disability civil rights law to be enacted in the United States. Section 504 of the Rehabilitation Act states that "no otherwise qualified individual with a disability in the United States . . . shall be excluded from the participation in, denied the benefits of, or be subjected to discrimination under any program or activity" that either receives Federal financial assistance or is conducted by any Executive agency or the United States.<sup>4</sup>

Each federal agency, including the United States Department of Transportation (USDOT), has promulgated its own set of regulations implementing Section 504 of the 1973 Rehabilitation Act that apply to its programs. Requirements common to all Section 504 based regulations include:

- Reasonable accommodation for employees with disabilities;
- Effective communication with people who have hearing or vision disabilities;
- Accessible new construction and alterations; and
- Program accessibility.

Under Section 504 of the 1973 Rehabilitation Act, a recipient's services, programs, or activities, when viewed in their entirety, must be readily accessible to and usable by individuals with disabilities. This concept is known as program accessibility.

The Rehabilitation Act set the stage for the future enactment of the Americans with Disabilities Act.

### 1990 AMERICANS WITH DISABILITIES ACT

The Americans with Disabilities Act (ADA) prohibits discrimination on the basis of disability in transportation, employment, state and local government, public accommodations, commercial facilities, and telecommunications. Title II of the ADA covers all activities of state and local governments, regardless of receipt of federal funding, and is based on the concept of program accessibility that was introduced in Section 504 of the Rehabilitation Act described above.

The Department of Justice Technical Assistance Manual states that a Title II entity "may not deny the benefits of its programs, activities, and services to individuals with disabilities because its facilities are inaccessible. A public entity's services, programs, or activities, when viewed in their entirety, must be readily accessible to and usable by individuals with disabilities. This standard,

---

<sup>1</sup> 29 U.S.C. § 701 *et seq.*

<sup>2</sup> 42 U.S.C. § 12101, *et seq.*

<sup>3</sup> 49 CFR Parts 27, 37, and 38.

<sup>4</sup> 29 U.S.C. § 794 (a)

known as ‘program accessibility,’ applies to all existing facilities of a public entity. Public entities, however, are not necessarily required to make each of their existing facilities accessible.”<sup>5</sup>

Under the ADA, the United States Access Board has the responsibility of creating guidelines for the accessibility of buildings, facilities, and vehicles subject to ADA requirements. Federal agencies, such as the USDOT, are responsible for issuing and enforcing accessibility standards that are consistent with the United States Access Board's minimum guidelines.

In 2006, the USDOT adopted the 2004 Americans with Disabilities Act Accessibility Guidelines (ADAAG) issued by the United States Access Board as its regulatory standards.<sup>6</sup>

The 2006 USDOT ADA Standards, known as the DOT ADA Standards, contain the technical provisions for altering existing and constructing new stations.<sup>7</sup> All areas of newly constructed buildings and facilities, as well as altered portions of existing buildings and facilities, must comply with the requirements of the DOT ADA Standards. The DOT ADA Standards also require an accessible path of travel from the entrance to altered primary function areas<sup>8</sup>. The USDOT incorporated the 2006 DOT ADA Standards in Appendix A-Modifications to Standards for Accessible Transportation Facilities, to 49 CFR Part 37.

## DEPARTMENT OF TRANSPORTATION (49 CFR PART 37)

The Federal Transit Administration (FTA) requires recipients of federal transit funding to not discriminate against individuals with disabilities and to comply with the USDOT regulations that implement the transportation-related provisions of the 1990 ADA and Section 504 of the Rehabilitation Act of 1973. The applicable federal regulations are found in 49 CFR Parts 27, 37, and 38. These regulations set specific requirements that transit providers must follow to ensure that their services, vehicles, and facilities are accessible to and usable by individuals with disabilities. Subpart C of 49 CFR Part 37 contains the ADA regulations for transportation facilities. As noted above, the DOT ADA Standard is incorporated within 49 CFR Part 37 in Appendix A.

In 2015, the FTA published a Circular 4710.1 offering guidance on compliance with the provisions of the ADA (the “ADA Circular”).<sup>9</sup> Chapter 3 of the ADA Circular<sup>10</sup> provides guidance to carry out the ADA requirements for transportation facilities.

---

<sup>5</sup> The Americans with Disabilities Act Title II Technical Assistance Manual Covering State and Local Government Programs and Services, Section II-5.1000 General, <https://www.ada.gov/taman2.html>. See also, 28 CFR 35.149-35.150.

<sup>6</sup> 49 CFR Part 37, Appendix A.

<sup>7</sup> United States Department of Transportation ADA Standards for Transportation, November 29, 2006.

<sup>8</sup> A primary function is a major activity for which the transportation facility is intended. Primary function areas include ticket purchase and collection areas, passenger waiting areas, train or bus platforms, baggage checking and return areas and employment areas. 49 CFR § 37.43(c).

<sup>9</sup> FTA Circular 4710.1, Americans with Disabilities Act (ADA): Guidance, (November 4, 2015).

<sup>10</sup> FTA Circular 4710.1, “Chapter 3 – Transportation Facilities”, (November 4, 2015).

# All Stations Accessibility Program (ASAP) Strategic Plan

## APPENDIX B PRIORITIZATION SCORES AND RANKING

Station Ranking by Geography & Total Score						Ridership and Gaps					Origins		Destinations			Weighted Need	Complexity	Total Score
						Ridership	PWD Ridership	Senior Ridership	Station Gaps	Connections	Population	Paratransit	Employment	University	POI			
Geography	Group	Station	Branch	Line Served	2015 Ridership	20.0%	10.0%	5.0%	15.0%	5.0%	10.0%	20.0%	7.0%	4.0%	4.0%	50.0%	50.0%	100.0%
CBD	Others	Adams/Wabash	Loop Elev.	BR, GR, OR, PR, PK	2,788,254	5	5	5	1	5	3	1	5	5	5	3.40	2	2.70
CBD	Others	State/Lake*	Loop Elev.	BR, GR, OR, PR, PK	3,295,794	5	5	5	1	5	4	2	5	5	5	3.70	1	2.35
CBD	Subway	Harrison	State Sub.	RED	1,497,362	4	3	4	1	4	3.5	3	5	5	5	3.35	1	2.18
CBD	Subway	Monroe/State	State Sub.	RED	3,487,284	5	5	5	1	5	2	1	5	5	5	3.30	1	2.15
CBD	Subway	Washington/Dearborn	Dear'n Sub.	BLUE	3,633,658	5	4	5	1	5	2.5	1	5	5	5	3.25	1	2.13
CBD	Subway	LaSalle	Dear'n Sub.	BLUE	937,782	3	2	2	2	5	3.5	3	5	5	5	3.15	1	2.08
CBD	Subway	Monroe/Dearborn	Dear'n Sub.	BLUE	2,240,798	5	2	4	1	5	2	1	5	5	5	2.95	1	1.98
CBD	Others	LaSalle/Van Buren	Loop Elev.	BR, OR, PR, PK	774,355	3	1	2	1	5	3	3	5	5	5	2.85	1	1.93
CBD	FP	Clinton-Congress	Dear'n Sub.	BLUE	1,174,021	3	3	2	2	2	3	1	5	3	4	2.53	1	1.77
North	RPM	Morse	Howard	RED	1,636,238	4	5	4	3	2	5	5	2	3	4	3.97	2	2.99
North	RPM	Main	Evan.	PURPLE	398,927	1	3	3	4	3	3	2	1	0	2	2.25	3	2.63
North	RPM	Berwyn*	Howard	RED	1,178,291	3	5	5	4	3	5	5	3	4	2	4.05	1	2.53
North	RPM	Bryn Mawr*	Howard	RED	1,605,838	4	5	5	4	3	5	5	2.5	0	1	4.02	1	2.51
North	RPM	Noyes	Howard	PURPLE	257,335	1	1	1	4	0	1	2	4	0	3	1.85	3	2.43
North	RPM	Dempster	Evan.	PURPLE	299,417	1	2	1	2	1	2	2	4	0	4	1.84	3	2.42
North	RPM	Argyle*	Howard	RED	1,078,620	3	5	4	3	1	5	5	3	4	4	3.83	1	2.42
North	RPM	Lawrence*	Howard	RED	1,139,764	3	5	4	2	4	5	5	3	4	4	3.83	1	2.42
North	Subway	North/Clybourn	State Sub.	RED	2,146,351	5	4	5	5	4	3.5	4	4	3	3	4.27	0	2.14
North	RPM	South Boulevard	Evan.	PURPLE	254,618	1	1	1	4	1	2.5	3	1	0	2	2.00	2	2.00
North	RPM	Jarvis	Howard	RED	581,445	2	3	3	1	0	5	5	2	3	3	2.88	1	1.94
North	RPM	Sheridan	Howard	RED	1,846,676	4	4	4	2	4	5	5	3	2	4	3.85	0	1.93
North	RPM	Central-Evanston	Evan.	PURPLE	260,517	1	1	2	4	1	1	1	4	0	1	1.67	2	1.84
North	RPM	Thorndale	Howard	RED	1,013,867	3	3	4	1	1	5	5	2	4	2	3.18	0	1.59
North	RPM	Foster	Evan.	PURPLE	282,795	1	1	1	2	0	1.5	2	4	4	4	1.80	1	1.40
NorthWest	Others	Montrose-O'Hare*	O'Hare	BLUE	784,647	3	2	3	5	3	1.5	2	2.5	0	1	2.62	5	3.81
NorthWest	Others	California/Milwaukee*	O'Hare	BLUE	1,604,799	4	2	3	3	3	4	4	1.5	0	3	3.18	4	3.59
NorthWest	Others	Irving Park-O'Hare	O'Hare	BLUE	1,438,569	4	3	5	3	5	2	3	1	3	1	3.08	3	3.04
NorthWest	Others	Damen/Milwaukee	O'Hare	BLUE	2,233,065	5	3	3	3	4	5	3	3	3	3	3.65	2	2.83
NorthWest	Subway	Belmont-O'Hare	O'Hare	BLUE	1,777,563	4	4	5	3	5	4	2	2	3	1	3.25	2	2.63
NorthWest	Subway	Division/Milwaukee	O'Hare	BLUE	1,991,499	5	4	4	5	4	4	4	2.5	4	4	4.25	0	2.12
NorthWest	Subway	Chicago/Milwaukee	O'Hare	BLUE	1,354,664	4	2	3	5	4	2	2	4	4	2	3.22	1	2.11
NorthWest	Subway	Grand/Milwaukee	O'Hare	BLUE	883,831	3	1	1	5	4	4	1	4	2	2	2.74	1	1.87
West	Others	Austin-Lake*	Lake	GREEN	642,808	2	3	2	2	3	3	5	1.5	2	1	2.78	4	3.39
West	Others	Oak Park-Lake	Lake	GREEN	504,852	2	2	3	2	1	2.5	3	3	0	4	2.32	4	3.16
West	FP	Pulaski-Congress	Congress	BLUE	634,717	2	5	2	5	3	2.5	4	1.5	0	1	3.10	3	3.05
West	FP	Racine	Con./Doug.	BLUE	733,620	2	1	1	3	2	4	4	4	5	3	2.90	3	2.95
West	FP	Western-Congress	Congress	BLUE	555,745	2	4	1	4	2	1.5	4	1.5	4	1	2.81	3	2.90
West	FP	Cicero-Congress	Congress	BLUE	482,940	1	4	1	5	3	1	4	1.5	3	1	2.72	3	2.86
West	FP	Austin-Congress	Congress	BLUE	634,972	2	4	3	5	2	1	3	1	2	1	2.69	3	2.85
West	Others	Ridgeland	Lake	GREEN	393,399	1	1	2	4	2	1	4	1.5	0	2	2.19	3	2.59
West	FP	Oak Park-Congress	Congress	BLUE	553,524	2	1	2	5	2	1	1	1	0	1	1.86	3	2.43
West	FP	Harlem-Congress	Congress	BLUE	386,381	1	2	1	3	2	1	1	1.5	0	3	1.53	3	2.26

\* ASAP Phase One Station

Station Ranking by Need Score						Ridership and Gaps					Origins		Destinations			Weighted Need
						Ridership	PWD Ridership	Senior Ridership	Station Gaps	Connections	Population	Paratransit	Employment	University	POI	
Geography	Group	Station	Branch	Line Served	2015 Ridership	20.0%	10.0%	5.0%	15.0%	5.0%	10.0%	20.0%	7.0%	4.0%	4.0%	100.0%
North	Subway	North/Clybourn	State Sub.	RED	2,146,351	5	4	5	5	4	3.5	4	4	3	3	4.27
NorthWest	Subway	Division/Milwaukee	O'Hare	BLUE	1,991,499	5	4	4	5	4	4	4	2.5	4	4	4.25
North	RPM	Berwyn*	Howard	RED	1,178,291	3	5	5	4	3	5	5	3	4	2	4.05
North	RPM	Bryn Mawr*	Howard	RED	1,605,838	4	5	5	4	3	5	5	2.5	0	1	4.02
North	RPM	Morse	Howard	RED	1,636,238	4	5	4	3	2	5	5	2	3	4	3.97
North	RPM	Sheridan	Howard	RED	1,846,676	4	4	4	2	4	5	5	3	2	4	3.85
North	RPM	Argyle*	Howard	RED	1,078,620	3	5	4	3	1	5	5	3	4	4	3.83
North	RPM	Lawrence*	Howard	RED	1,139,764	3	5	4	2	4	5	5	3	4	4	3.83
CBD	Others	State/Lake*	Loop Elev.	BR, GR, OR, PR, PK	3,295,794	5	5	5	1	5	4	2	5	5	5	3.70
NorthWest	Others	Damen/Milwaukee	O'Hare	BLUE	2,233,065	5	3	3	3	4	5	3	3	3	3	3.65
CBD	Others	Adams/Wabash	Loop Elev.	BR, GR, OR, PR, PK	2,788,254	5	5	5	1	5	3	1	5	5	5	3.40
CBD	Subway	Harrison	State Sub.	RED	1,497,362	4	3	4	1	4	3.5	3	5	5	5	3.35
CBD	Subway	Monroe/State	State Sub.	RED	3,487,284	5	5	5	1	5	2	1	5	5	5	3.30
CBD	Subway	Washington/Dearborn	Dear'n Sub.	BLUE	3,633,658	5	4	5	1	5	2.5	1	5	5	5	3.25
NorthWest	Subway	Belmont-O'Hare	O'Hare	BLUE	1,777,563	4	4	5	3	5	4	2	2	3	1	3.25
North	RPM	Main	Evan.	PURPLE	398,927	1	3	3	4	3	3	2	1	0	2	2.25
NorthWest	Subway	Chicago/Milwaukee	O'Hare	BLUE	1,354,664	4	2	3	5	4	2	2	4	4	2	3.22
NorthWest	Others	California/Milwaukee*	O'Hare	BLUE	1,604,799	4	2	3	3	3	4	4	1.5	0	3	3.18
North	RPM	Thorndale	Howard	RED	1,013,867	3	3	4	1	1	5	5	2	4	2	3.18
CBD	Subway	LaSalle	Dear'n Sub.	BLUE	937,782	3	2	2	2	5	3.5	3	5	5	5	3.15
West	FP	Pulaski-Congress	Congress	BLUE	634,717	2	5	2	5	3	2.5	4	1.5	0	1	3.10
NorthWest	Others	Irving Park-O'Hare	O'Hare	BLUE	1,438,569	4	3	5	3	5	2	3	1	3	1	3.08
CBD	Subway	Monroe/Dearborn	Dear'n Sub.	BLUE	2,240,798	5	2	4	1	5	2	1	5	5	5	2.95
West	FP	Racine	Con./Doug.	BLUE	733,620	2	1	1	3	2	4	4	4	5	3	2.90
North	RPM	Jarvis	Howard	RED	581,445	2	3	3	1	0	5	5	2	3	3	2.88
CBD	Others	LaSalle/Van Buren	Loop Elev.	BR, OR, PR, PK	774,355	3	1	2	1	5	3	3	5	5	5	2.85
West	FP	Western-Congress	Congress	BLUE	555,745	2	4	1	4	2	1.5	4	1.5	4	1	2.81
West	Others	Austin-Lake*	Lake	GREEN	642,808	2	3	2	2	3	3	5	1.5	2	1	2.78
NorthWest	Subway	Grand/Milwaukee	O'Hare	BLUE	883,831	3	1	1	5	4	4	1	4	2	2	2.74
West	FP	Cicero-Congress	Congress	BLUE	482,940	1	4	1	5	3	1	4	1.5	3	1	2.72
West	FP	Austin-Congress	Congress	BLUE	634,972	2	4	3	5	2	1	3	1	2	1	2.69
NorthWest	Others	Montrose-O'Hare*	O'Hare	BLUE	784,647	3	2	3	5	3	1.5	2	2.5	0	1	2.62
CBD	FP	Clinton-Congress	Dear'n Sub.	BLUE	1,174,021	3	3	2	2	2	3	1	5	3	4	2.53
West	Others	Oak Park-Lake	Lake	GREEN	504,852	2	2	3	2	1	2.5	3	3	0	4	2.32
West	Others	Ridgeland	Lake	GREEN	393,399	1	1	2	4	2	1	4	1.5	0	2	2.19
North	RPM	South Boulevard	Evan.	PURPLE	254,618	1	1	1	4	1	2.5	3	1	0	2	2.00
West	FP	Oak Park-Congress	Congress	BLUE	553,524	2	1	2	5	2	1	1	1	0	1	1.86
North	RPM	Noyes	Evan.	PURPLE	257,335	1	1	1	4	0	1	2	4	0	3	1.85
North	RPM	Dempster	Evan.	PURPLE	299,417	1	2	1	2	1	2	2	4	0	4	1.84
North	RPM	Foster	Evan.	PURPLE	282,795	1	1	1	2	0	1.5	2	4	4	4	1.80
North	RPM	Central-Evanston	Evan.	PURPLE	260,517	1	1	2	4	1	1	1	4	0	1	1.67
West	FP	Harlem-Congress	Congress	BLUE	386,381	1	2	1	3	2	1	1	1.5	0	3	1.53

\* ASAP Phase One Station

# All Stations Accessible Program (ASAP) Strategic Plan

## APPENDIX C PHASE ONE STATIONS PROPOSED CONCEPT DESIGNS

AUSTIN  
MONTROSE  
CALIFORNIA



























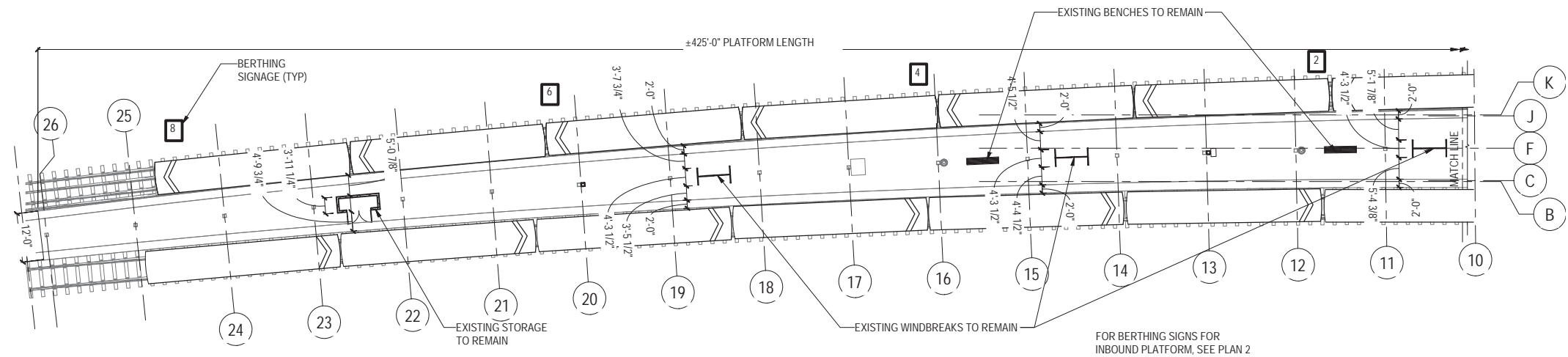




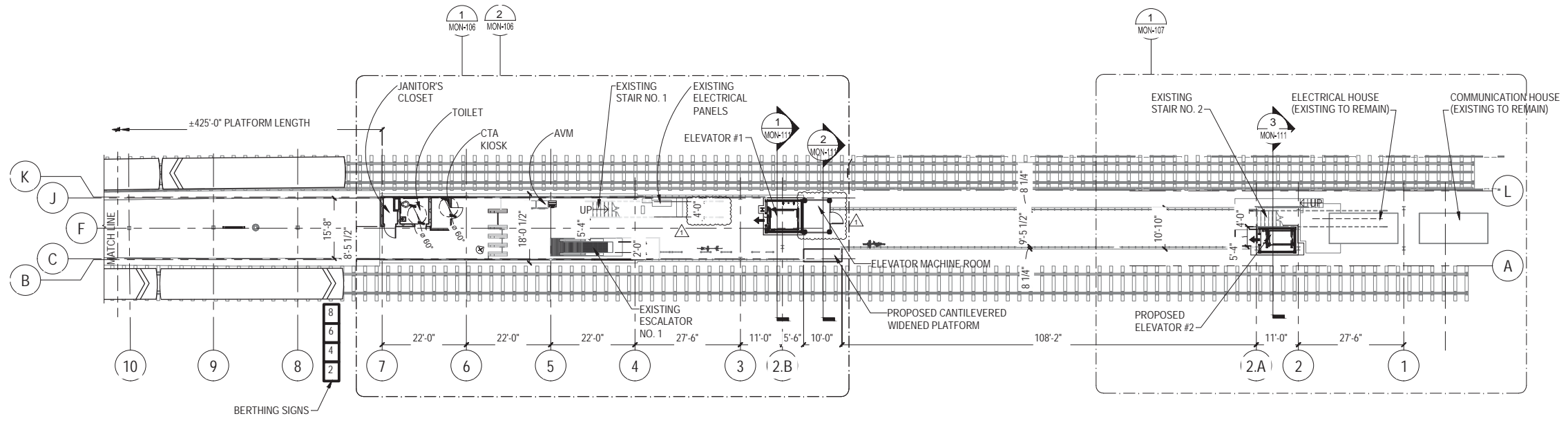




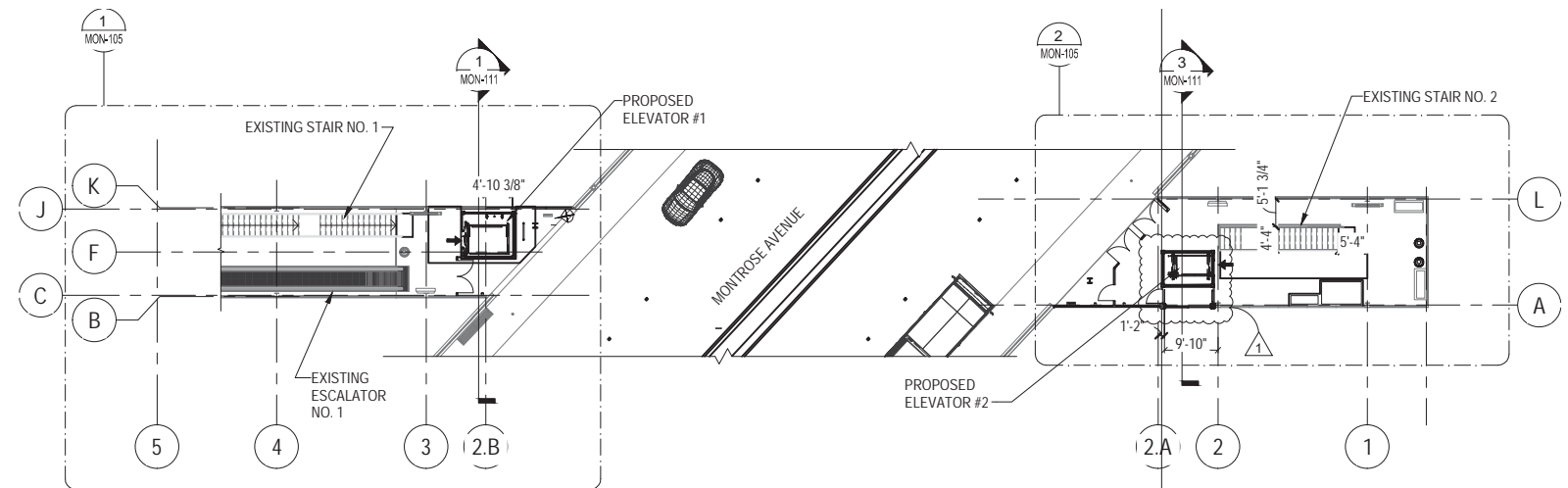
**NOT FOR CONSTRUCTION**



**1 PROPOSED PLATFORM LEVEL**  
 SCALE: 1/16" = 1'-0"  
 EL +100' - 0"

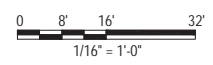


**2 PROPOSED PLATFORM LEVEL**  
 SCALE: 1/16" = 1'-0"  
 EL +100' - 0"



**3 PROPOSED STATION HOUSE LEVEL PLAN**  
 SCALE: 1/16" = 1'-0"  
 EL +117' - 7 3/4"

NOTE:  
 1. SEE ENLARGED PLANS ON SHEETS MON-105, MON-106 AND MON-107 FOR ADDITIONAL DETAILS AND NOTES.



**RME** Rubino & Mesia Engineers, Inc.  
 200 S. Michigan Avenue, Suite 1500, Chicago, IL 60604-2482

**CHICAGO TRANSIT AUTHORITY ENGINEERING**

SENSITIVE SECURITY INFORMATION  
 WARNING: THIS RECORD CONTAINS SENSITIVE SECURITY INFORMATION THAT IS CONTROLLED UNDER 49 CFR PARTS 15 AND 1502. NO PART OF THIS RECORD MAY BE DISCLOSED TO PERSONS WITHOUT A "NEED TO KNOW" AS DEFINED IN 49 CFR PARTS 15 AND 1502. EXCEPT WITH THE WRITTEN PERMISSION OF THE ADMINISTRATOR OF THE TRANSPORTATION SECURITY ADMINISTRATION OR THE SECRETARY OF TRANSPORTATION. UNAUTHORIZED RELEASE MAY RESULT IN CIVIL PENALTY OR OTHER ACTION, FOR U.S. GOVERNMENT AGENCIES. PUBLIC DISCLOSURE IS GOVERNED BY 5 U.S.C. 552 AND 49 CFR PARTS 15 AND 1502.

DRAWING SCALE IS NOT GUARANTEED. CTA ASSUMES NO RISK OF LIABILITY FOR ERRORS CAUSED, DIRECTLY OR INDIRECTLY, BY SCALING OF THIS DRAWING. FIELD VERIFY ALL EXISTING CONDITIONS AND DIMENSIONS.

**ALL STATIONS ACCESSIBILITY PROGRAM**  
 MONTROSE STATION - BLUE LINE  
 10% CONCEPTUAL PLANS

IN CHARGE	
APPROVED BY	
CHECKED BY	
DESIGNED BY	
DRAWN BY	
PROJECT NO	
FILE NAME	

MARK	DATE	DESCRIPTION
▲	03/30/2018	ELEVATOR REVISION

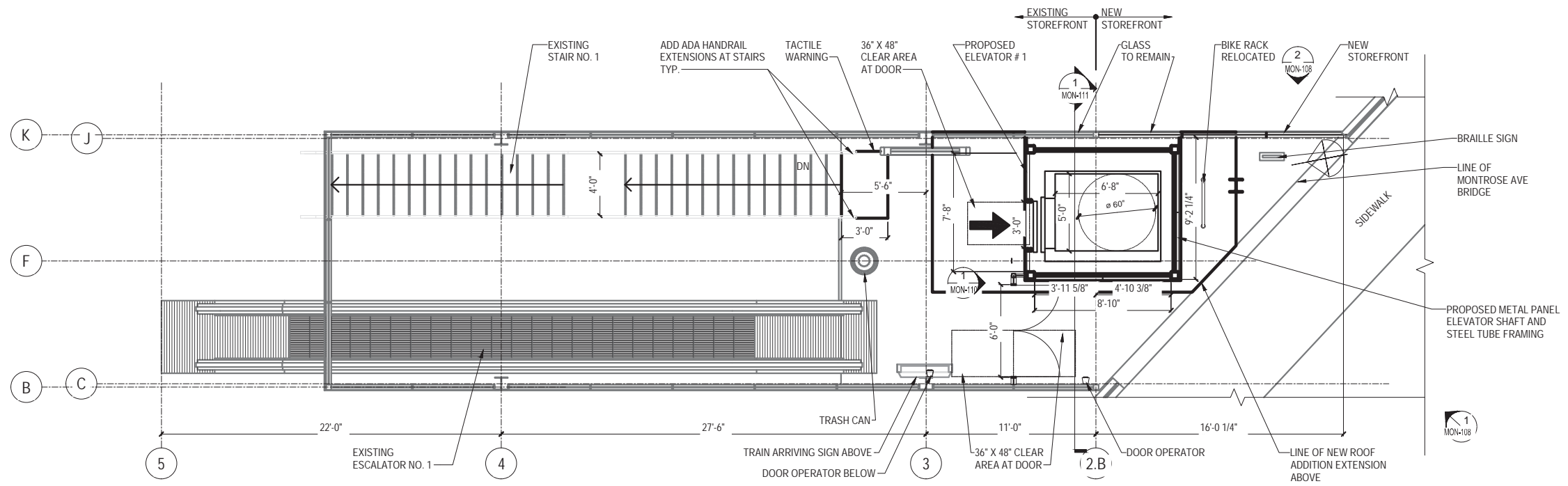
LOCATION: MONTROSE AVE

OVERALL PLANS

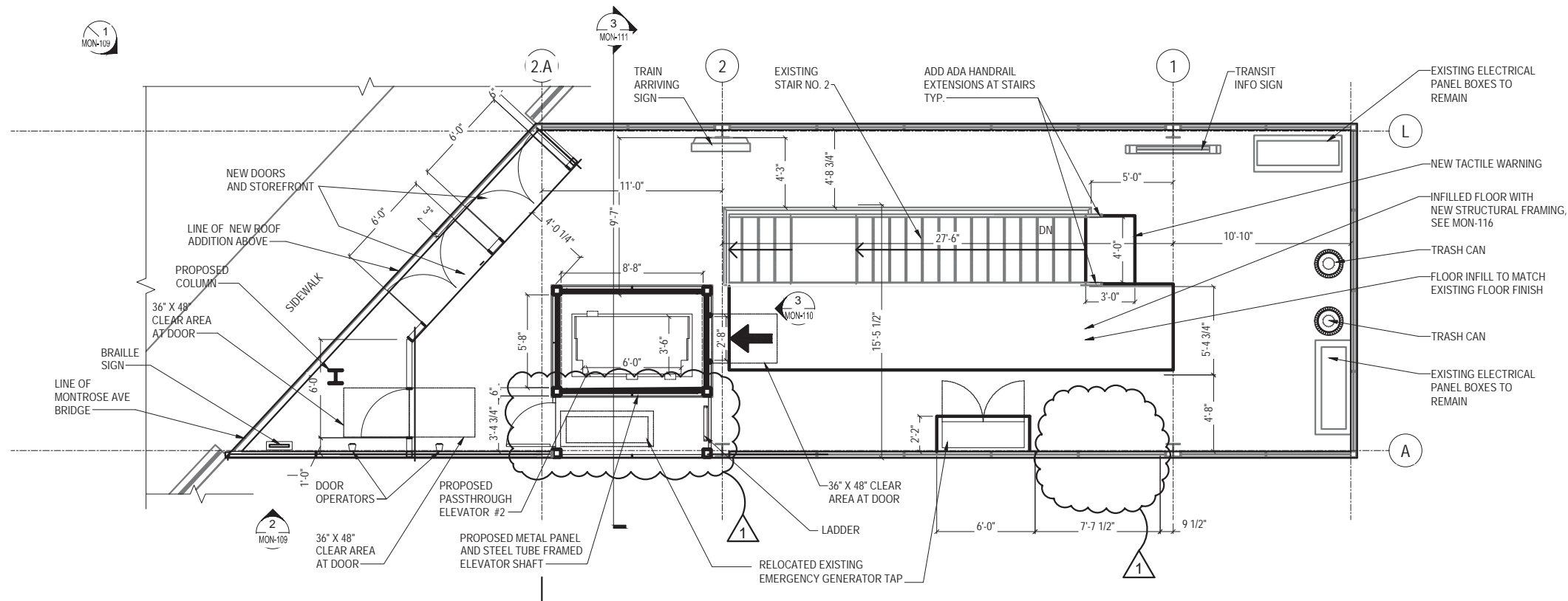
**MON-104**



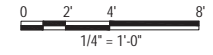
**NOT FOR CONSTRUCTION**



**1 PROPOSED NORTH STATION HOUSE**  
 SCALE: 1/4" = 1'-0"  
 EL +117' - 7 3/4"



**2 PROPOSED SOUTH STATION HOUSE**  
 SCALE: 1/4" = 1'-0"  
 EL +117' - 7 3/4"



**RME** Rubinos & Mesia Engineers, Inc.  
 200 S. Michigan Avenue, Suite 1500, Chicago, IL 60604-2482

**CHICAGO TRANSIT AUTHORITY ENGINEERING**

SENSITIVE SECURITY INFORMATION  
WARNING: THIS RECORD CONTAINS SENSITIVE SECURITY INFORMATION THAT IS CONTROLLED UNDER 49 CFR PARTS 15 AND 1502. NO PART OF THIS RECORD MAY BE DISCLOSED TO PERSONS WITHOUT A NEED TO KNOW AS DEFINED IN CFR PARTS 15 AND 1502, EXCEPT WITH THE WRITTEN PERMISSION OF THE ADMINISTRATOR OF THE TRANSPORTATION SECURITY ADMINISTRATION OR THE SECRETARY OF TRANSPORTATION. UNAUTHORIZED RELEASE MAY RESULT IN CIVIL PENALTY OR OTHER ACTION, FOR U.S. GOVERNMENT AGENCIES. PUBLIC DISCLOSURE IS GOVERNED BY 5 U.S.C. 552 AND 49 CFR PARTS 15 AND 1502.

DRAWING SCALE IS NOT GUARANTEED. CTA ASSUMES NO RISK OF LIABILITY FOR ERRORS CAUSED, DIRECTLY OR INDIRECTLY, BY SCALING OF THIS DRAWING. FIELD VERIFY ALL EXISTING CONDITIONS AND DIMENSIONS.

**ALL STATIONS ACCESSIBILITY PROGRAM**  
 MONTROSE STATION - BLUE LINE  
 10% CONCEPTUAL PLANS

IN CHARGE	
APPROVED BY	
CHECKED BY	
DESIGNED BY	
DRAWN BY	
PROJECT NO	
FILE NAME	

MARK	DATE	DESCRIPTION
△	03/30/2018	ELEVATOR REVISION

LOCATION: MONTROSE AVE

**STATION HOUSE LEVEL ENLARGED PLAN**

**MON-105A**



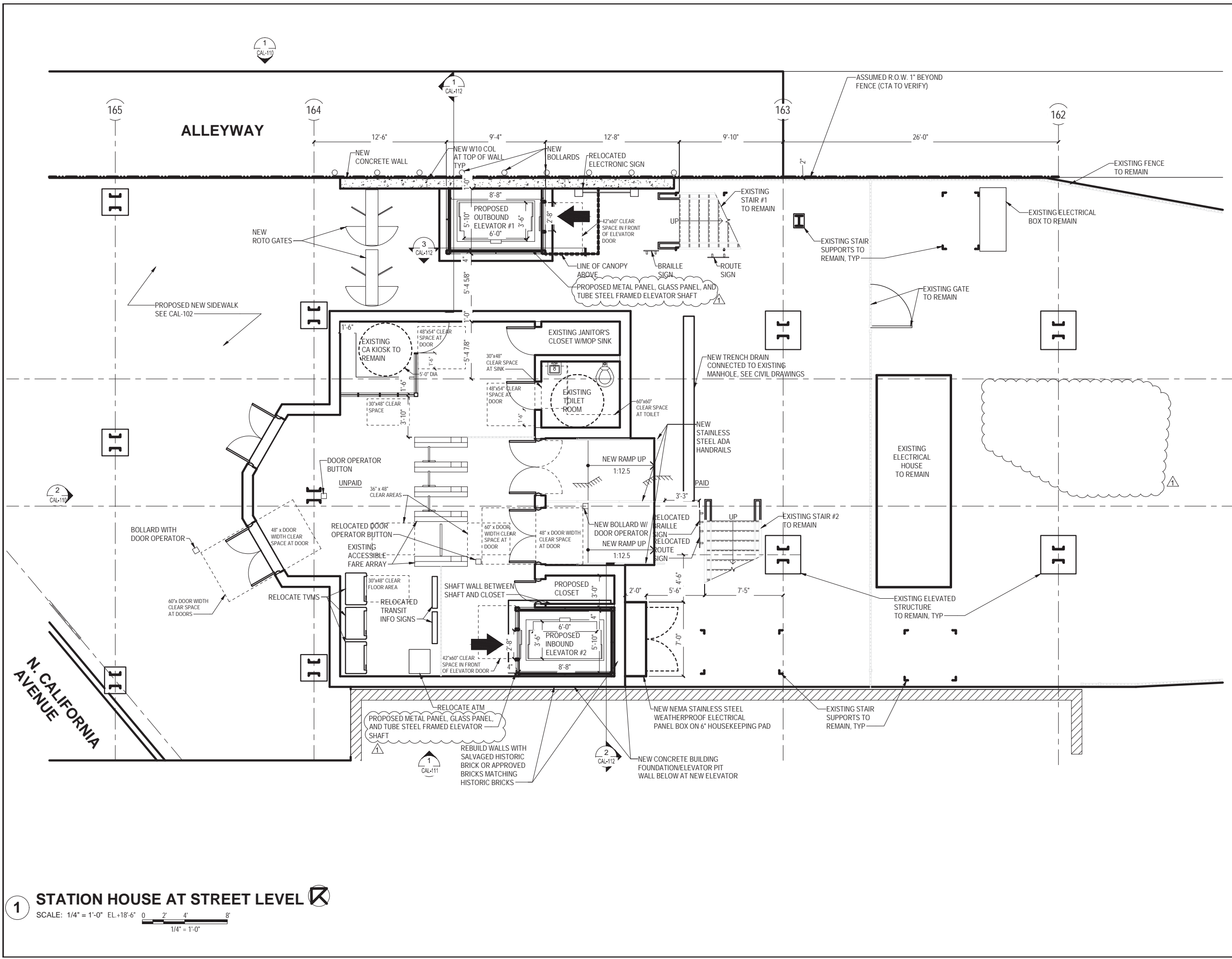








**NOT FOR CONSTRUCTION**



**RME** Rubino & Mesia Engineers, Inc.  
200 S. Michigan Avenue, Suite 1500, Chicago, IL 60604-2482

**CHICAGO TRANSIT AUTHORITY ENGINEERING**

**SENSITIVE SECURITY INFORMATION**  
WARNING: THIS RECORD CONTAINS SENSITIVE SECURITY INFORMATION THAT IS CONTROLLED UNDER 49 CFR PARTS 15 AND 1502. NO PART OF THIS RECORD MAY BE DISCLOSED TO PERSONS WITHOUT A "NEED TO KNOW" AS DEFINED IN CFR PARTS 15 AND 1502, EXCEPT WITH THE WRITTEN PERMISSION OF THE ADMINISTRATOR OF THE TRANSPORTATION SECURITY ADMINISTRATION OR THE SECRETARY OF TRANSPORTATION. UNAUTHORIZED RELEASE MAY RESULT IN CIVIL PENALTY OR OTHER ACTION, FOR U.S. GOVERNMENT AGENCIES. PUBLIC DISCLOSURE IS GOVERNED BY 5 U.S.C. 552 AND 49 CFR PARTS 15 AND 1502.

DRAWING SCALE IS NOT GUARANTEED. CTA ASSUMES NO RISK OF LIABILITY FOR ERRORS CAUSED, DIRECTLY OR INDIRECTLY, BY SCALING OF THIS DRAWING. FIELD VERIFY ALL EXISTING CONDITIONS AND DIMENSIONS.

**ALL STATIONS ACCESSIBILITY PROGRAM**  
CALIFORNIA STATION - Blue Line  
10% CONCEPTUAL PLANS

IN CHARGE	
APPROVED BY	
CHECKED BY	
DESIGNED BY	
DRAWN BY	
PROJECT NO	
FILE NAME	

MARK	DATE	DESCRIPTION
▲	03/30/2018	ELEVATOR REVISION

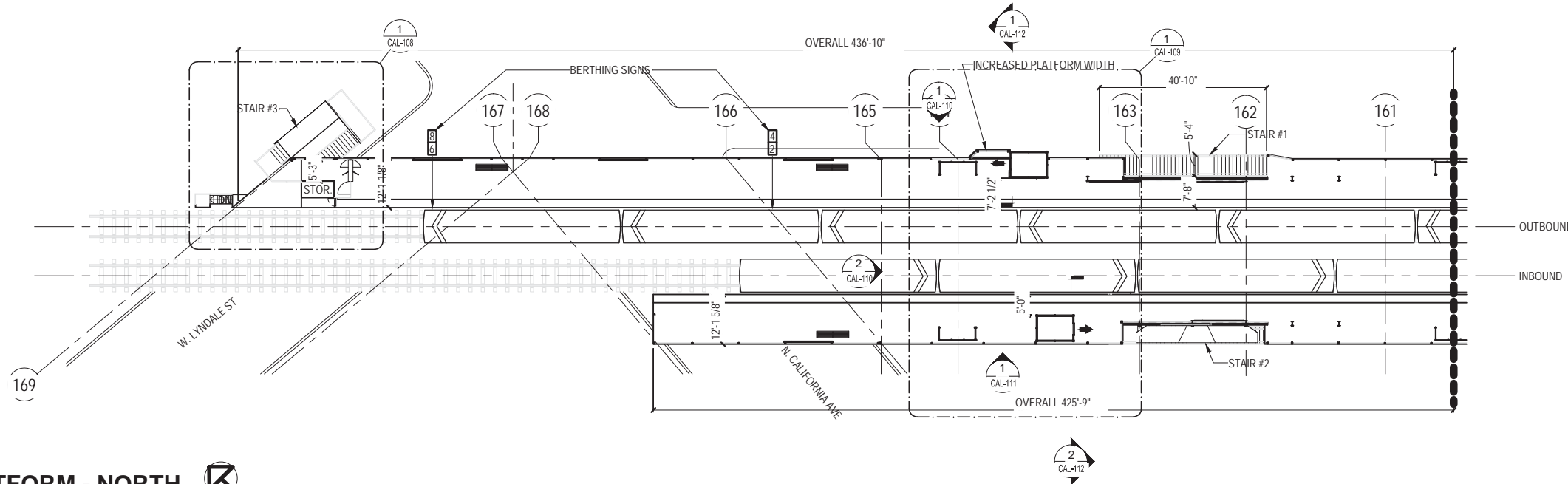
LOCATION: CALIFORNIA AVE.

**MAIN STATION HOUSE LEVEL PLAN**

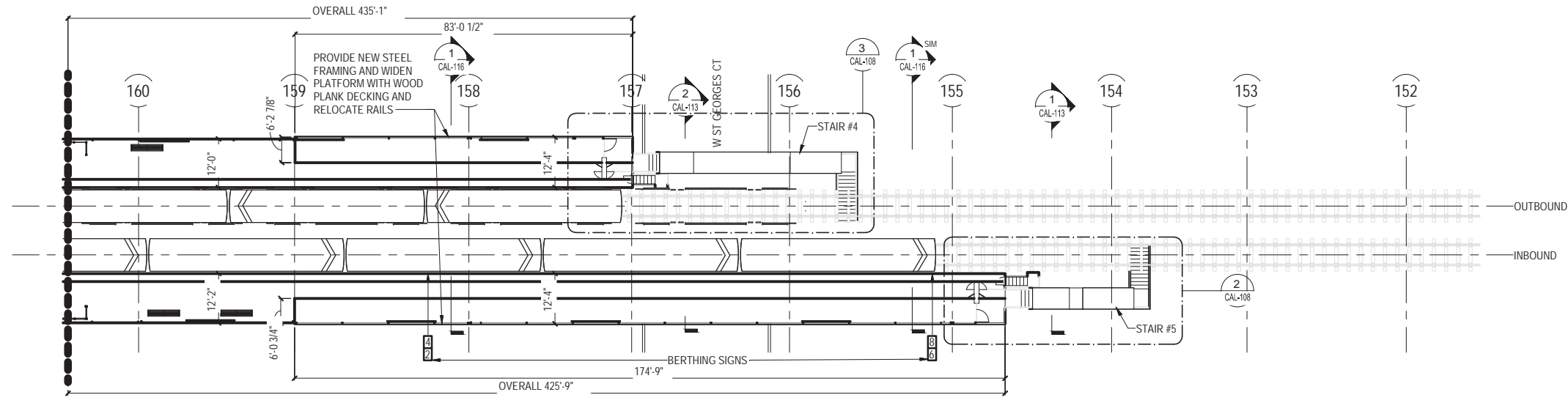
**CAL-105**

**1 STATION HOUSE AT STREET LEVEL**  
SCALE: 1/4" = 1'-0" EL+18'-6" 0 2' 4' 8'  
1/4" = 1'-0"

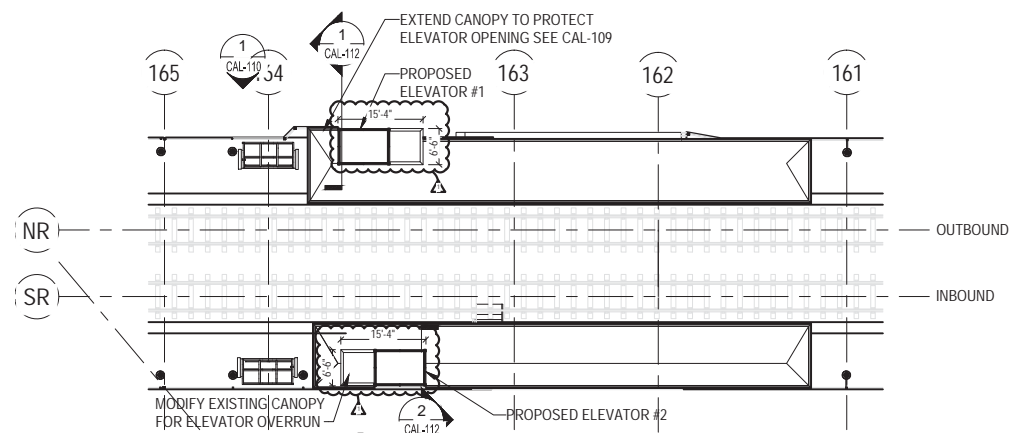
**NOT FOR CONSTRUCTION**



**1 PLATFORM - NORTH**  
 SCALE: 1/16" = 1'-0" EL. +41'-9" 0 8' 16' 32'  
 1/16" = 1'-0"



**2 PLATFORM - SOUTH**  
 SCALE: 1/16" = 1'-0" EL. +41'-9" 0 8' 16' 32'  
 1/16" = 1'-0"



**3 PLATFORM - ROOF**  
 SCALE: 1/16" = 1'-0" EL. +52'-6" 0 8' 16' 32'  
 1/16" = 1'-0"

**RME** Rubinos & Mesia Engineers, Inc.  
 200 S. Michigan Avenue, Suite 1500, Chicago, IL 60604-2482

**CHICAGO TRANSIT AUTHORITY ENGINEERING**

SENSITIVE SECURITY INFORMATION  
WARNING: THIS RECORD CONTAINS SENSITIVE SECURITY INFORMATION THAT IS CONTROLLED UNDER 49 CFR PARTS 15 AND 1502. NO PART OF THIS RECORD MAY BE DISCLOSED TO PERSONS WITHOUT A "NEED TO KNOW" AS DEFINED IN CFR PARTS 15 AND 1502, EXCEPT WITH THE WRITTEN PERMISSION OF THE ADMINISTRATOR OF THE TRANSPORTATION SECURITY ADMINISTRATION OR THE SECRETARY OF TRANSPORTATION. UNAUTHORIZED RELEASE MAY RESULT IN CIVIL PENALTY OR OTHER ACTION. FOR U.S. GOVERNMENT AGENCIES, PUBLIC DISCLOSURE IS GOVERNED BY 5 U.S.C. 552 AND 49 CFR PARTS 15 AND 1502.

DRAWING SCALE IS NOT GUARANTEED. CTA ASSUMES NO RISK OF LIABILITY FOR ERRORS CAUSED, DIRECTLY OR INDIRECTLY, BY SCALING OF THIS DRAWING. FIELD VERIFY ALL EXISTING CONDITIONS AND DIMENSIONS.

**ALL STATIONS ACCESSIBILITY PROGRAM**  
 CALIFORNIA STATION - Blue Line  
 10% CONCEPTUAL PLANS

IN CHARGE	
APPROVED BY	
CHECKED BY	
DESIGNED BY	
DRAWN BY	
PROJECT NO	
FILE NAME	

MARK	DATE	DESCRIPTION
▲	03/30/2018	ELEVATOR REVISION

LOCATION: CALIFORNIA AVE.

**PLATFORM LEVEL PLANS**

**CAL-107**