



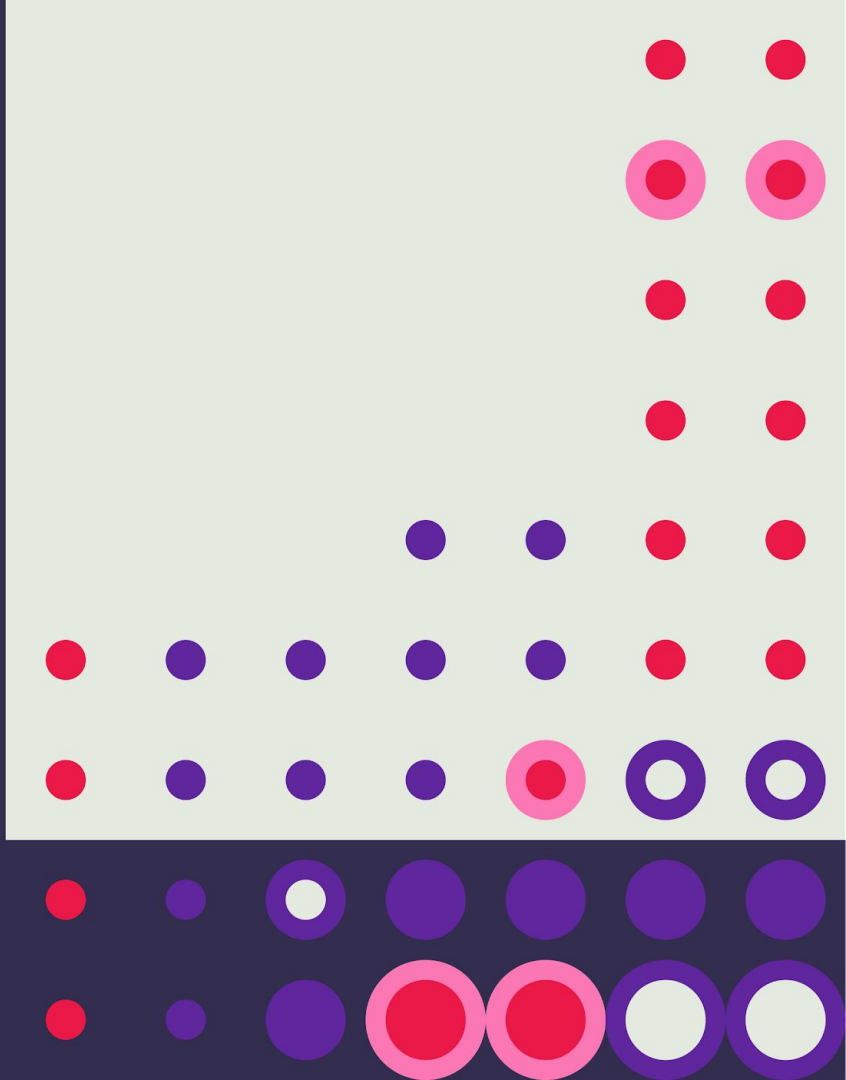
Chicago Transit Authority

# Community Meeting #1

Lawrence to Bryn Mawr Under 'L' Activation



1.10.2024



# Community Meeting #1 Run-through

## ● Agenda

Introduction

Aldersperson Welcome

Activation Overview

Site Design Overview

Schedule

Site

Site Analysis

Ideation

Next Steps

Engagement Explanation

## ● Goal of Today:

Capture your feedback regarding use, aesthetics, concerns, and opportunities



# Speakers

## Alderperson

### CTA

Emily Ryan - RPM Project Manager

Jeff Wilson - RPM Director of  
Government and Community  
Relations

## Site Design Group

Brenda Kiesgen - Project Manager

Samantha Shui - Designer



# LBMM Overview



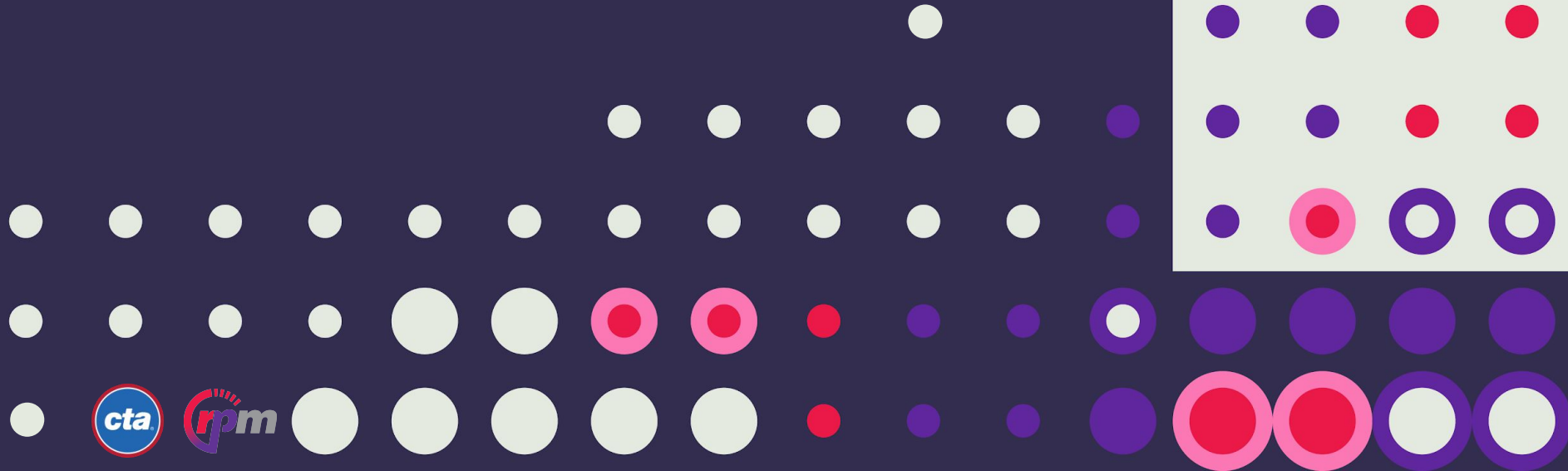


# Activation Overview

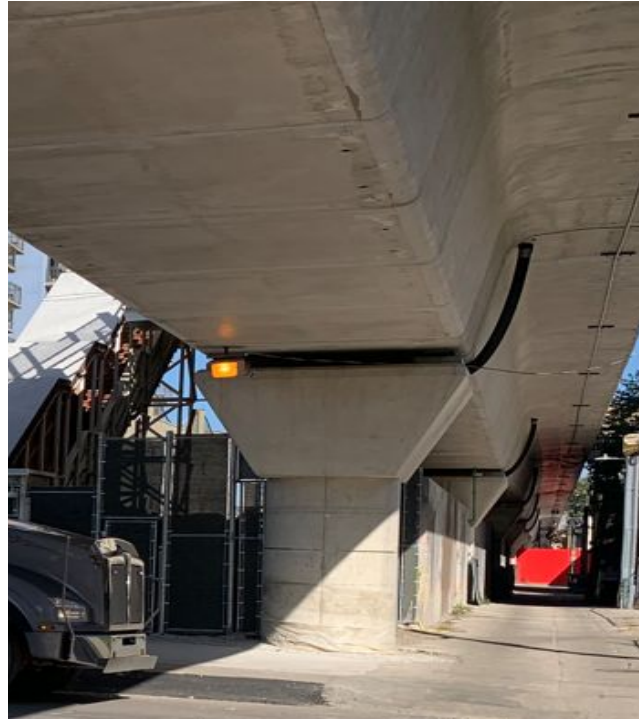




# New CTA Red and Purple Line Track Structure



# New CTA Red and Purple Line Track Structure



## Fun Facts:

1,555 segments

Depth of caissons - 65'

Length of new structure - 16,021' about 3 miles

Height of new structure +/- 14'-9" above the roadway





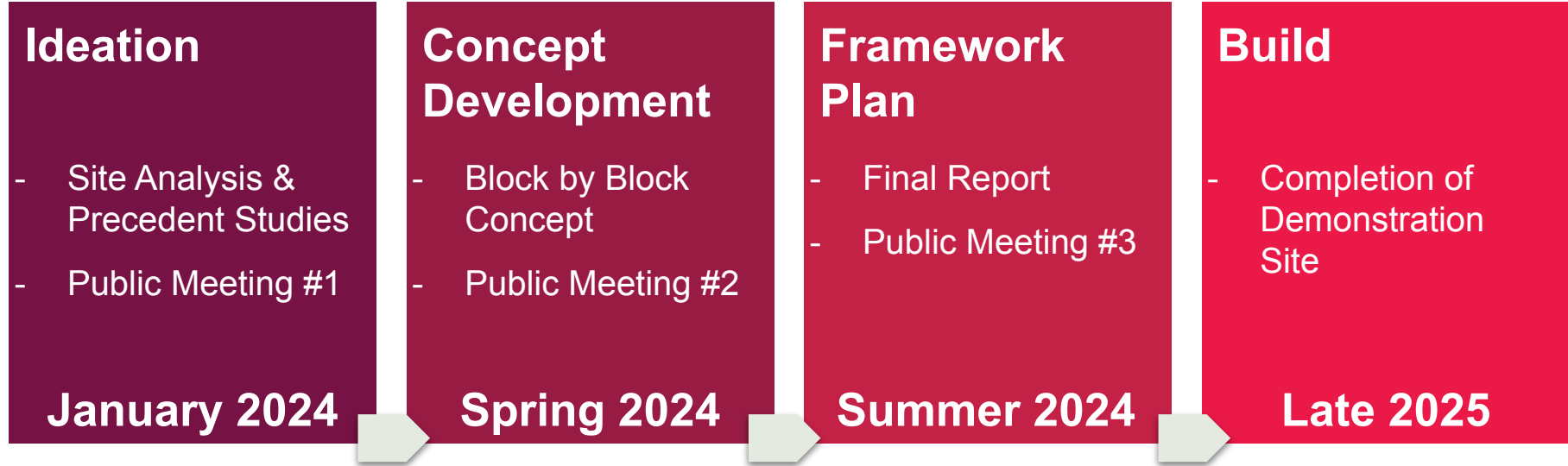


# Safety and Security

- ● New lighting will be installed under the new structure to increase visibility
- Attention to sight lines and promotion of active uses
- Ongoing coordination with the Chicago Police Department, elected officials, and social service agencies



# Schedule



# site design group, ltd. (site) Overview

Obama Presidential Center, Woodlawn



Riverwalk East, Loop





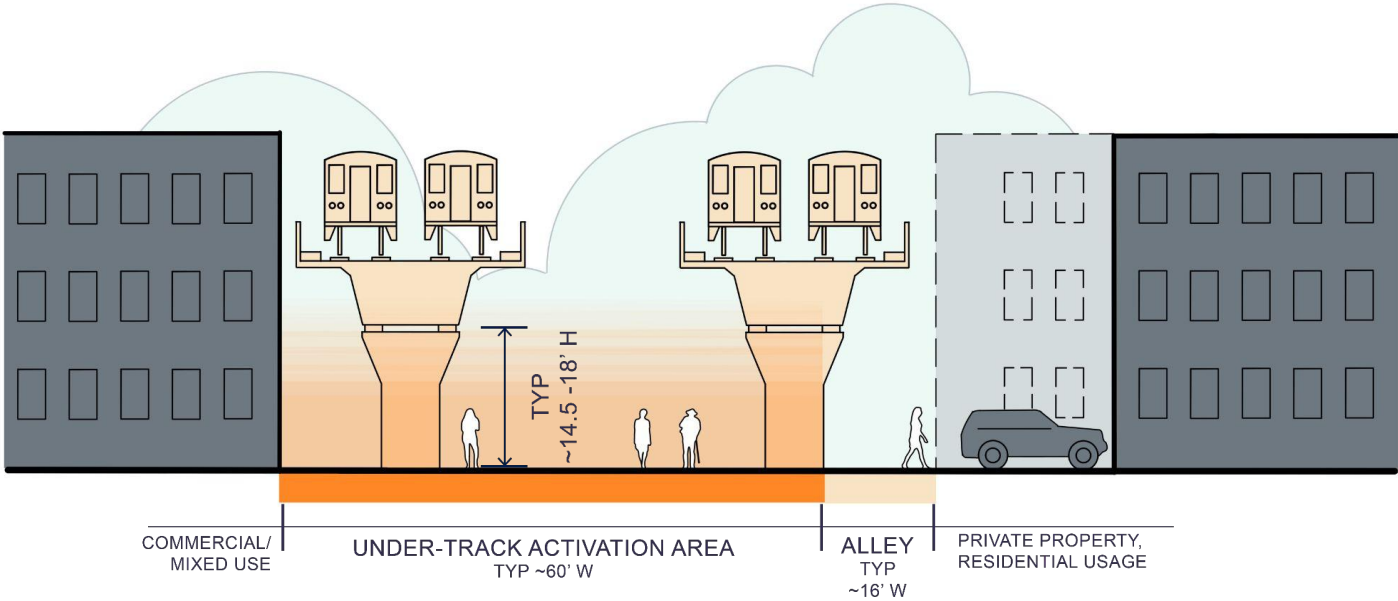




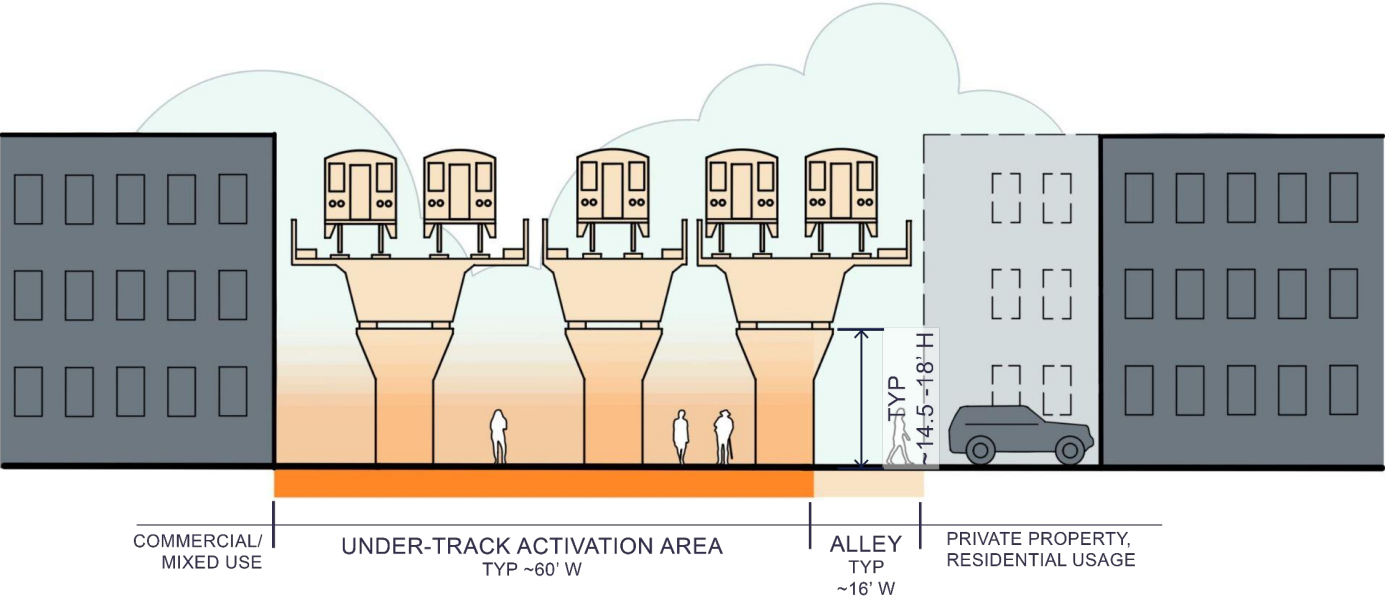




# New CTA Red and Purple Line Track Structure



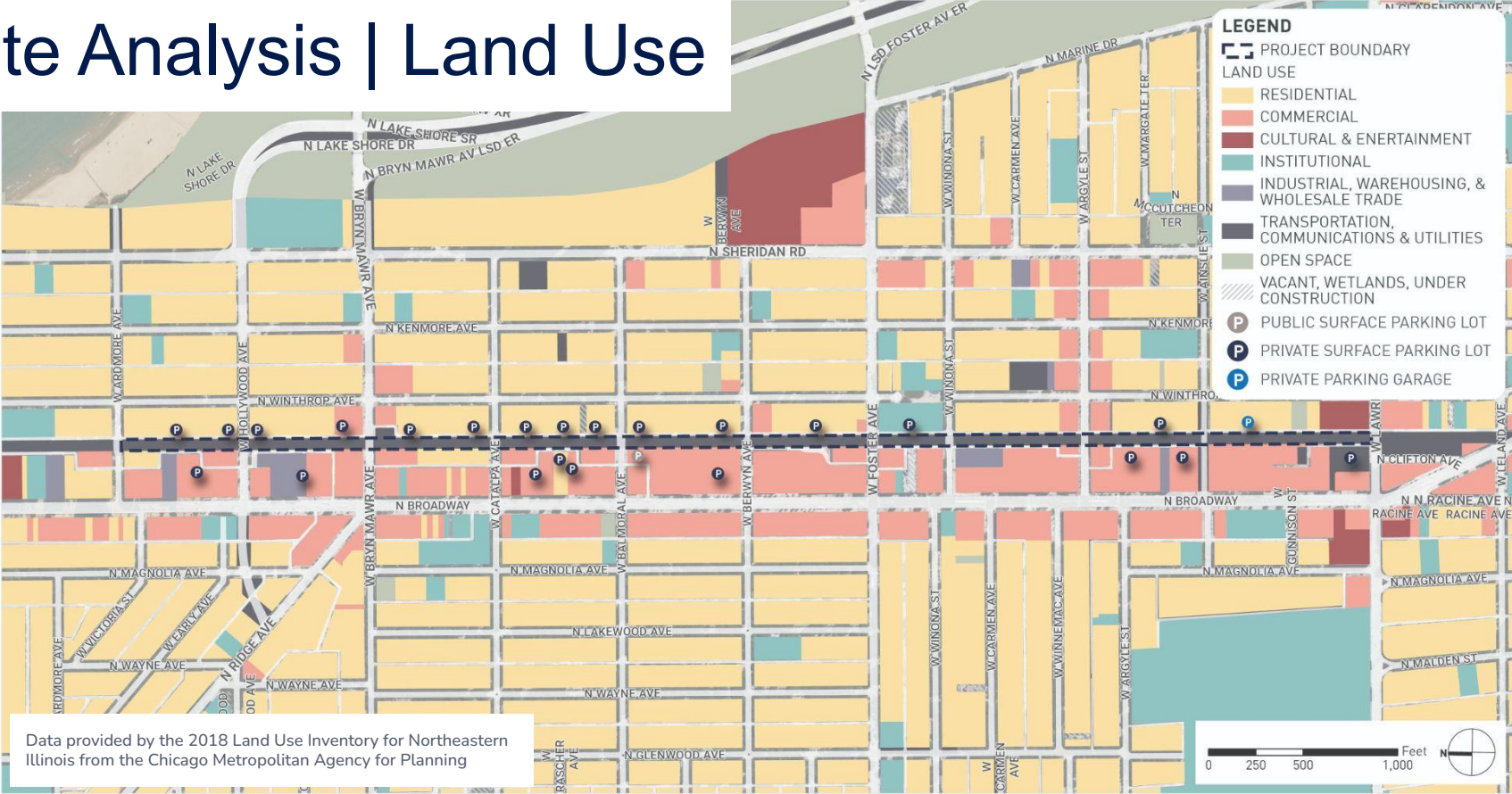
# New CTA Red and Purple Line Track Structure







# Site Analysis | Land Use

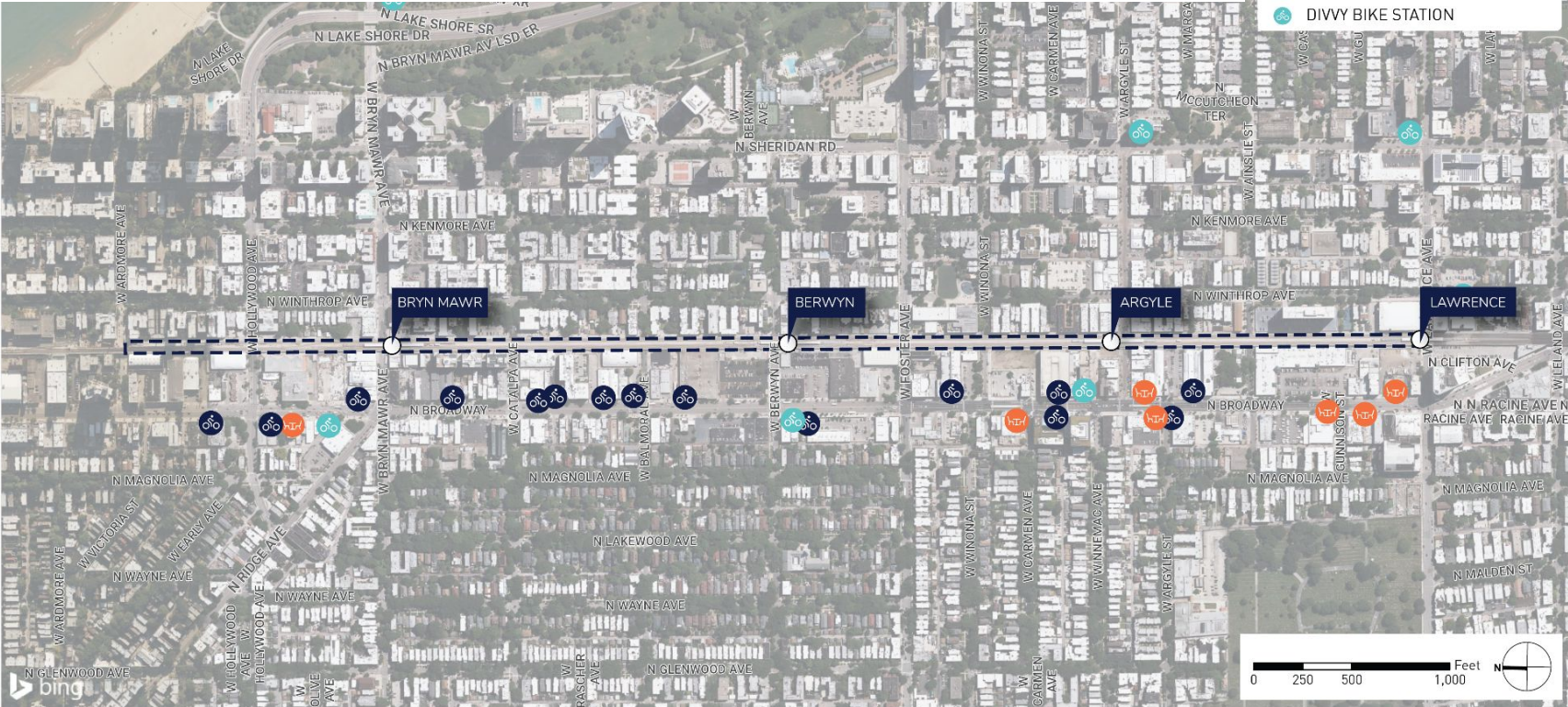




# Site Analysis | Broadway Amenities

**LEGEND**

- PROJECT BOUNDARY
- PATIO SEATING ON BROADWAY
- BIKE PARKING ON BROADWAY
- DIVVY BIKE STATION





# Site Analysis | Transit / Traffic



\*Data from 2019 to represent pre-COVID 19 traffic patterns

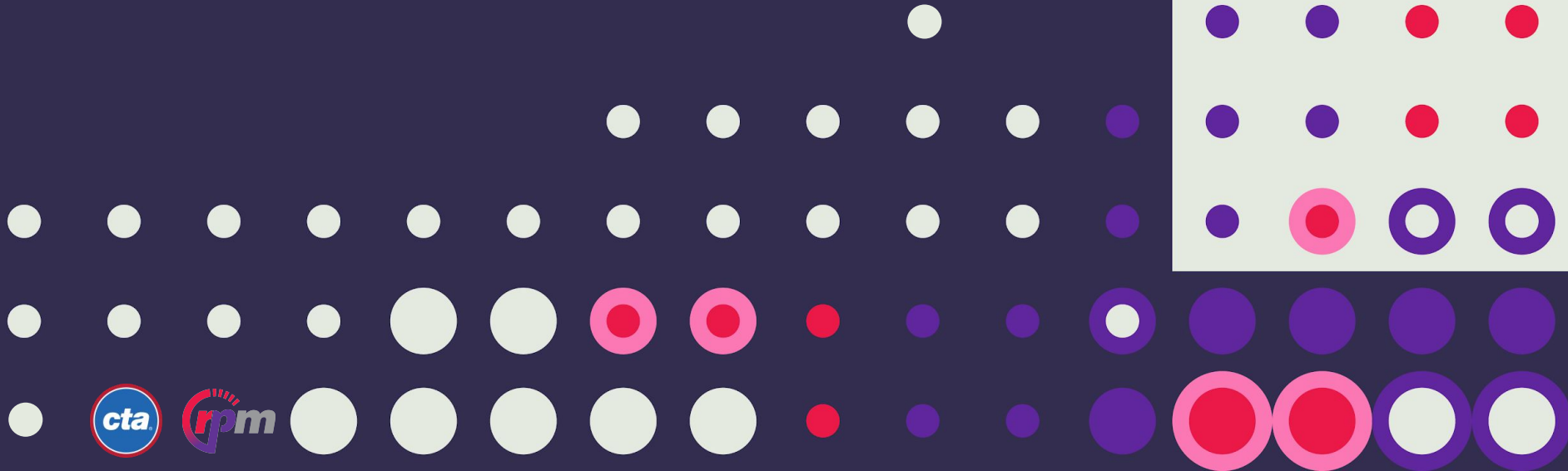




# Site Analysis | Neighborhood Amenities

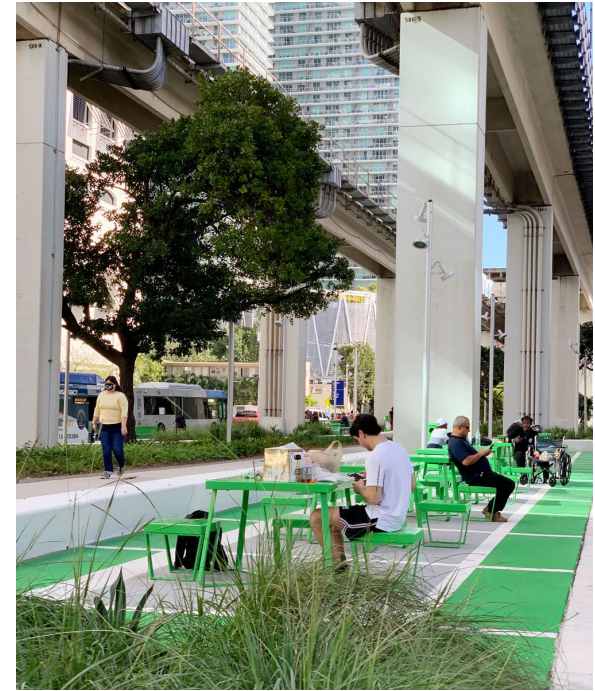


# Case Studies





# The Underline | Miami, FL



# The Underline | Miami, FL





# I-5 Underpass Activation | Seattle, WA

PLACEMAKING



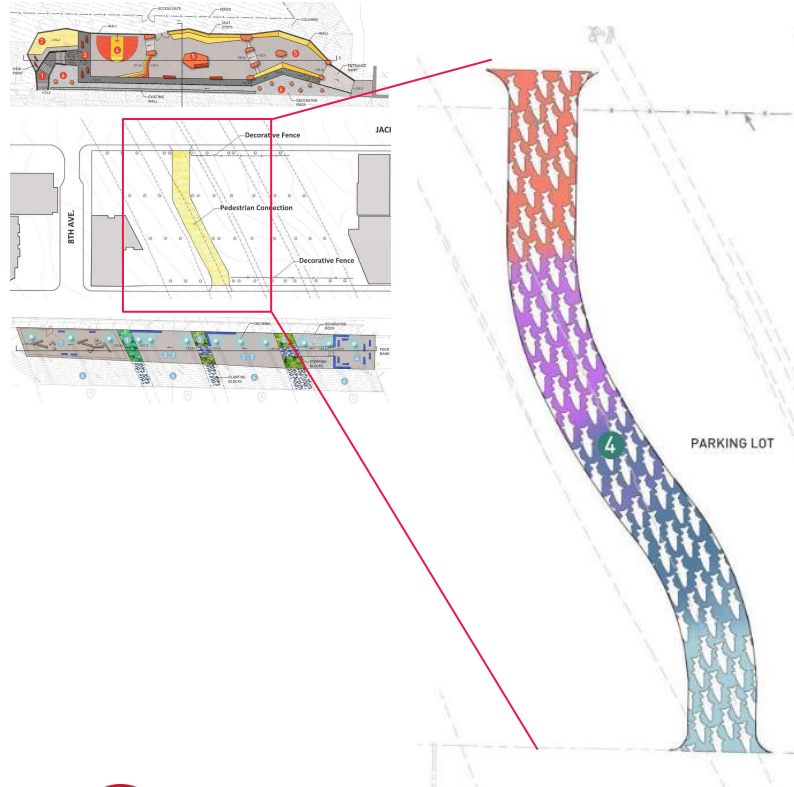
SAFETY



ACTIVATION



# I-5 Underpass Activation | Seattle, WA



## CULTURAL INSPIRATION



DRAGON DANCE



NIGHT MARKET



PAPER LANTERNS



GUARDIAN LION



CULTURAL LANDSCAPES



TRADITIONAL ARTWORK



SCHOLAR'S ROCK



RICE FIELDS





# Otowa Children's Park | Tokyo, Japan





# Otowa Children's Park | Tokyo, Japan



Garden Zone



Wellness Zone



Play Zone



# Underground Ink Block | Boston, MA





# Underground Ink Block | Boston, MA



# Seart-Sylvia Park | Auckland, New Zealand



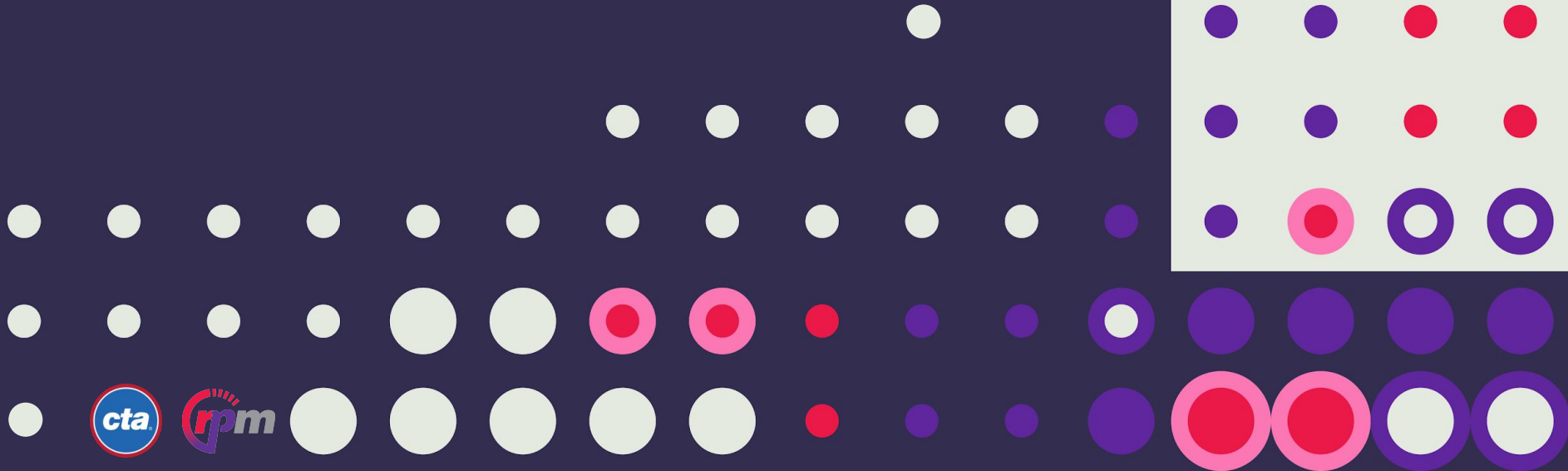


# (Extra)Ordinary Arboretum | Seoul, South Korea





# Mood Options

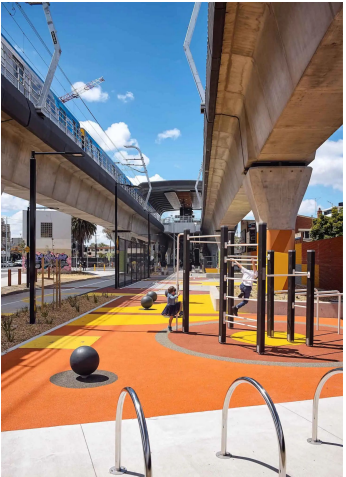
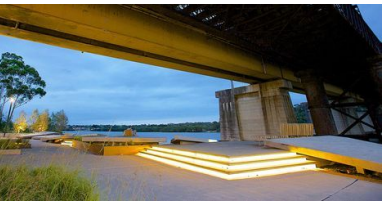




# Mood 1



*Warm, Textural,  
Welcoming, Contemporary*





# Mood 2



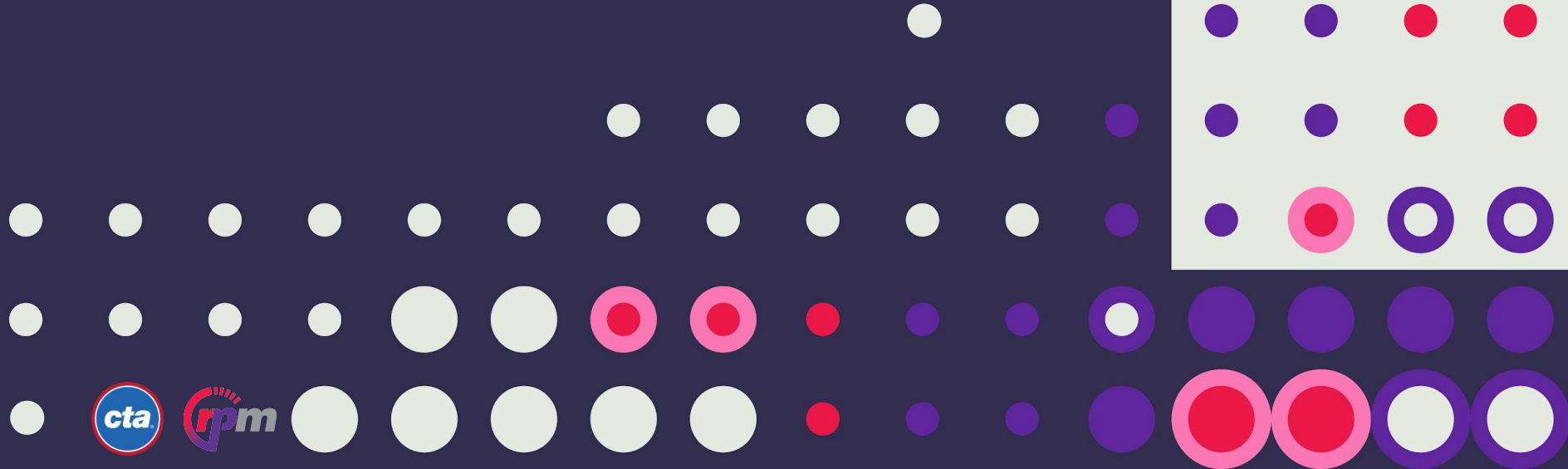
*Rustic,  
Natural,  
Peaceful,  
Green Space*



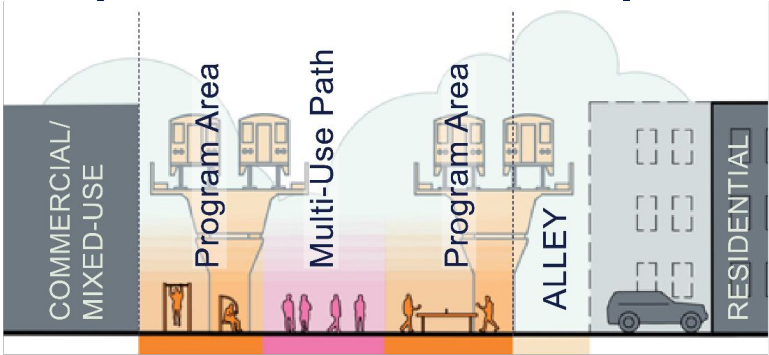




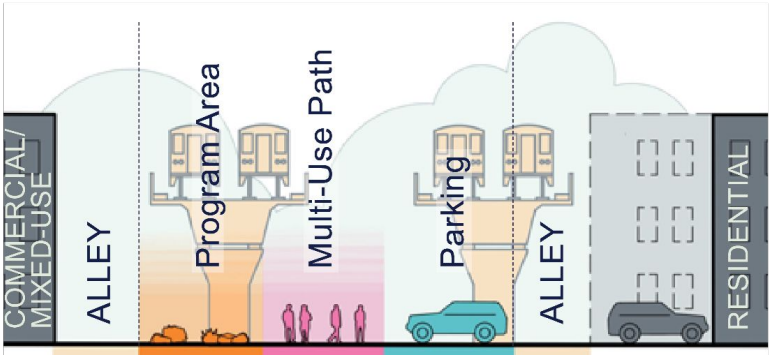
# Layout Conditions



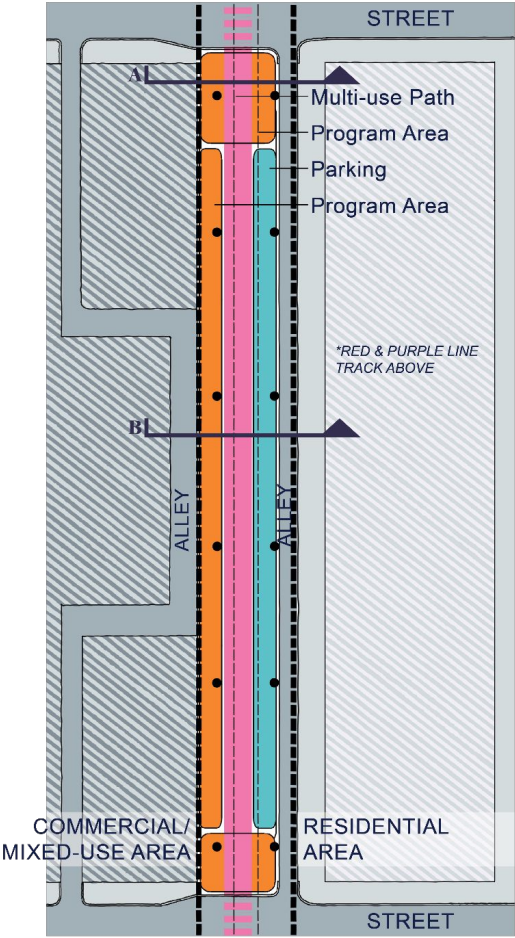
# Layout Condition | 1



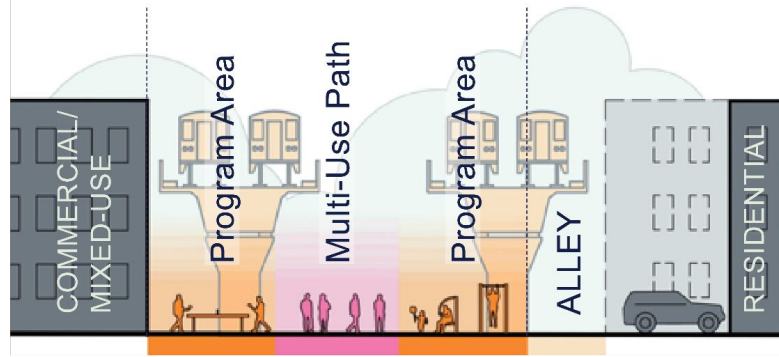
Section A



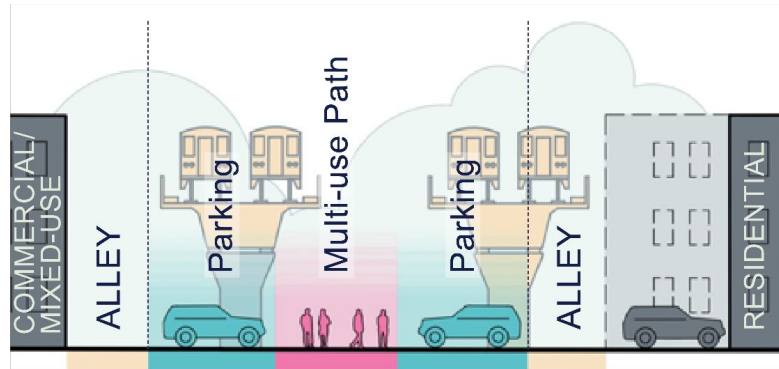
Section B



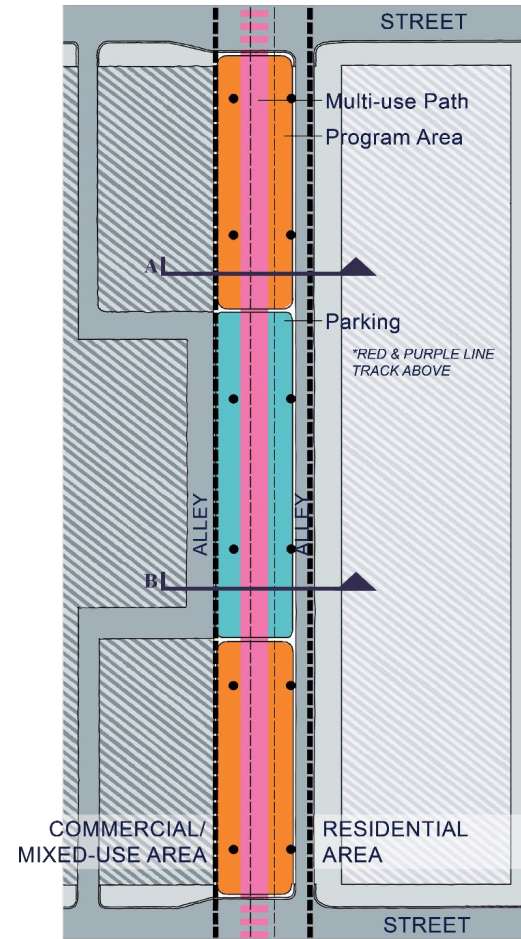
# Layout Condition | 2



Section A

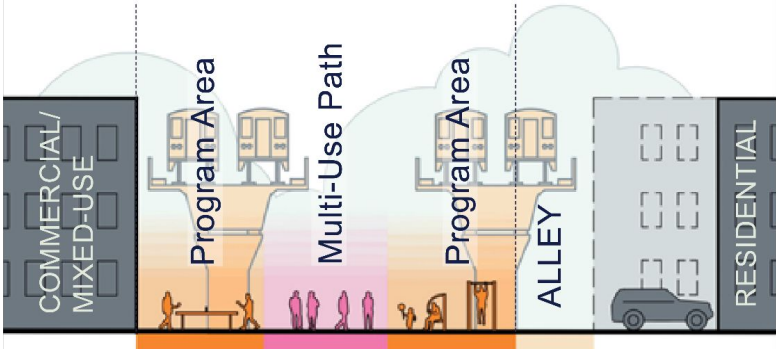


Section B

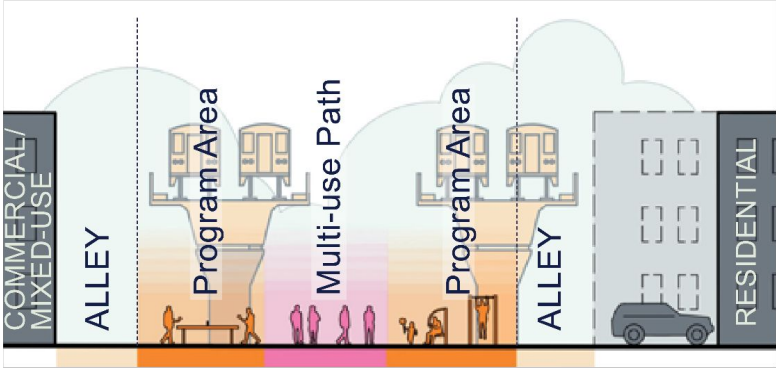




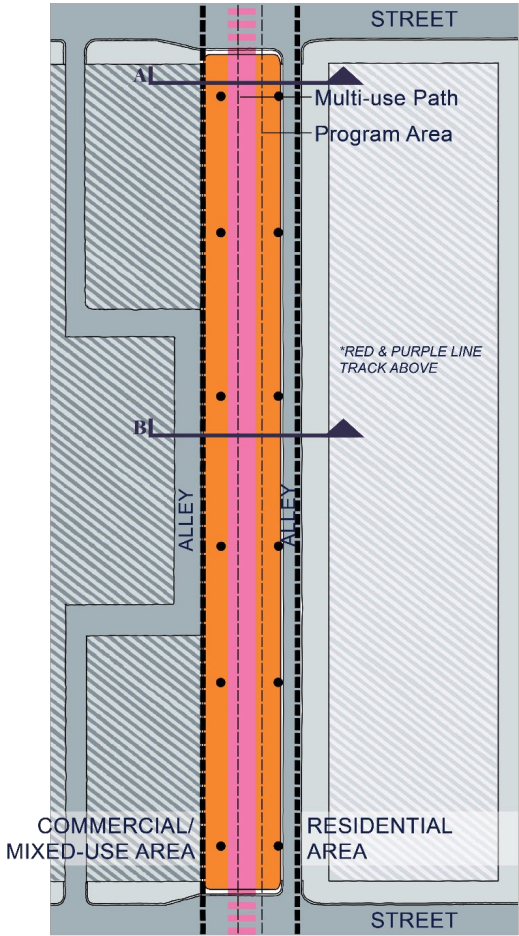
# Layout Condition | 3



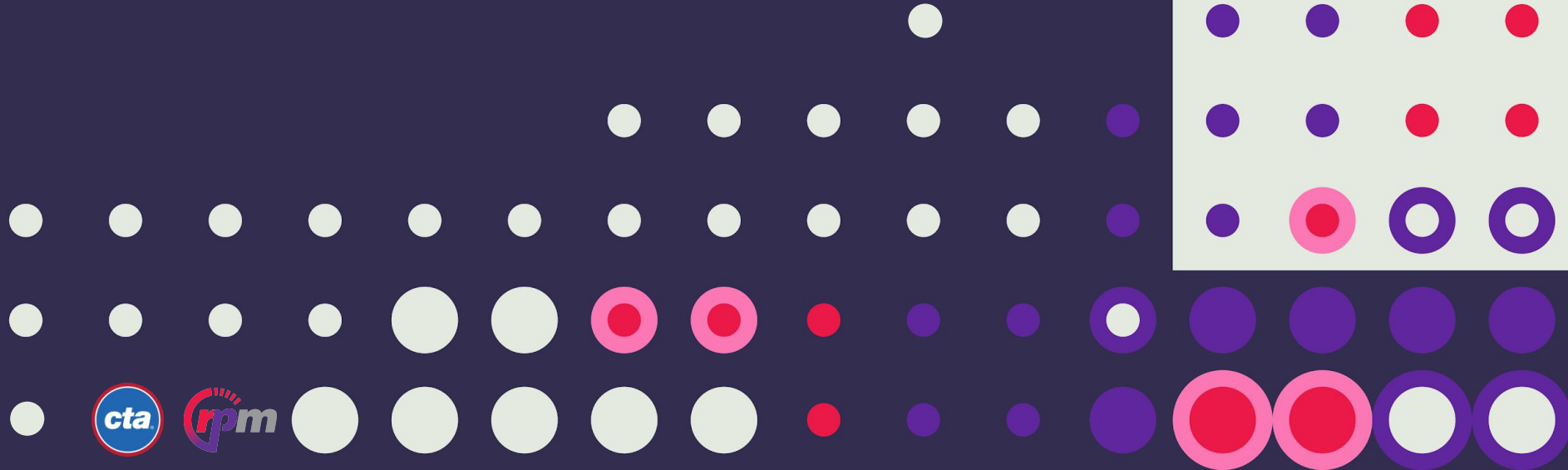
Section A



Section B



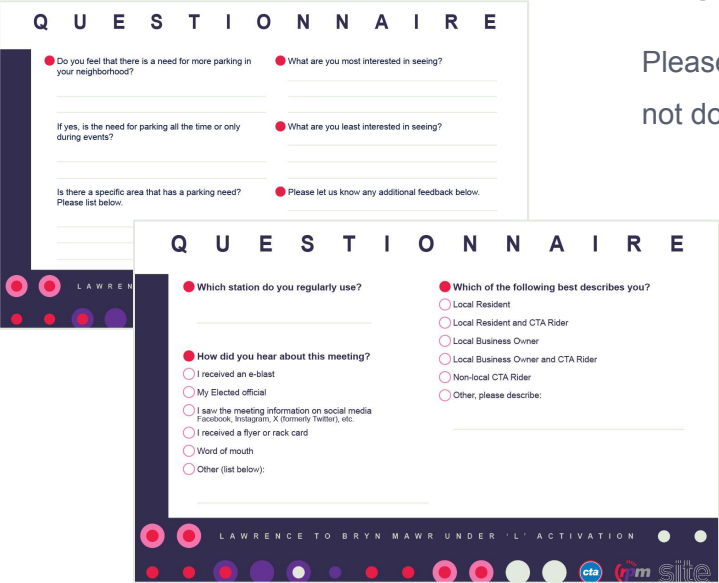
# Tonight's Activities



# Feedback and Next Steps | Handout

## Sign in & Questionnaire

Please sign in and complete the questionnaire handout if you have not done so already!

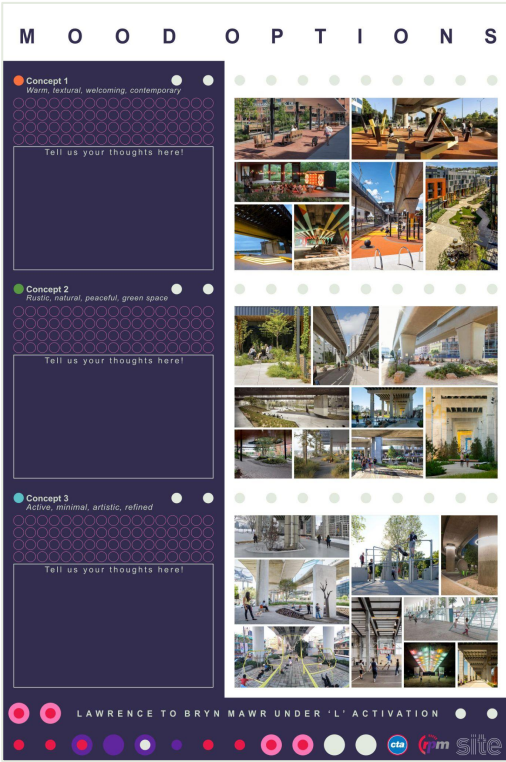




# Feedback and Next Steps | Engagement Boards

## Mood Board

With the provided sticky notes, please jot down any thoughts you have regarding each direction and put them on the board!



# Feedback and Next Steps | Engagement Boards



## ● Program Elements & Layout

A variety of potential programs for this site have been identified. Please use the provided program stickers to identify where you would like to see these programs within the ten blocks of the site.

Don't see a program you would like to see? Please use the blank sticker and write in what program you would like to suggest.



# Feedback and Next Steps | Engagement Boards

## ● Site Relationships

We want to know how you will access and use the site.

Please use the provided arrow stickers to show us how you plan to most often access the site.

Please use the provided sticky notes to share current uses and events in your neighborhood around the site.

**S I T E   R E L A T I O N S H I P S**

● We want to know how you will access the site. Please use the arrow stickers provided and show us on the map!  
Tell us your thoughts here!

● Does your neighborhood hold events? Where are they held and when? Please use the sticky notes provided and let us know your thoughts below!  
Tell us your thoughts here!

Please feel free to provide feedback on the entire site and not just the segment that is closest to you!

LAWRENCE TO BRYN MAWR UNDER 'L' ACTIVATION

cta rpm site





# Feedback and Next Steps | Engagement Boards

## ● Layout Conditions

These boards lay out the different options for the location of parking, program areas, pathways and bike ways.

Please use the provided stickers to let us know your thoughts!  
*Place your dot on the sliding scale:* Strongly Disagree, Disagree, No Opinion, Agree, Strongly Agree

**LAYOUT CONDITIONS**

Condition 1 - Pros and Cons

Pros

- Maintains visibility for active spaces
- Consolidated parking along eastern alley which runs continuously through the project scope
- Minimizes program area

Cons

- Parking access to program area
- Provides program area

Condition 2 - Pros and Cons

Pros

- Maintains maximum visibility for active spaces
- Consolidated parking along eastern alley
- Creates clear pedestrian flow
- Parking access is maintained
- Provides programmable adjacent commercial buildings

Cons

- Creates disconnection of the block

Condition 3 - Pros and Cons

Pros

- Maintains visibility for active spaces
- Minimizes vehicular / pedestrian conflict
- Maximizes programmable space for adjacent commercial and residential buildings

Cons

- Like the idea that parking is not provided along all eight blocks. Please place your dot on the sliding scale.
- Like having larger amount of north and south side. Please place your dot on the sliding scale.
- Like having programmable space throughout the block uninterrupted by parking. Please place your dot on the sliding scale.
- Like having a consistent path through the programmable space. Please place your dot on the sliding scale.

Tell us your thoughts here!

LAWRENCE TO BRYN MAWR UNDER 'L' ACTIVATION





# Stay Informed

● Red & Purple Line Service Updates  
[transitchicago.com/updates](https://transitchicago.com/updates)

Website: [transitchicago.com/rpm](https://transitchicago.com/rpm)

General Information:  
[RPM@transitchicago.com](mailto:RPM@transitchicago.com)

Construction Alerts @ Virtual Office Hours:  
[transitchicago.com/rpmalerts](https://transitchicago.com/rpmalerts)

● Email us: [RPM@transitchicago.com](mailto:RPM@transitchicago.com)

Call us: 331-303-2499 for a call back or  
CTA Customer Service: 888-YOUR-CTA

Visit us: 5137 N. Broadway -  
*Monday - Thursday, 10 a.m. - 4 p.m.*





# Follow Us

@CTARPM

