



Wilson Transfer Station Public Hearing

Environmental Assessment and Section 4(f) Evaluation

February 18, 2014

Uplift Community High School

- Formal Presentation 6:30 – 7:00 PM
- Oral Public Comments 7:00 – 8:30 PM
- Closing Remarks 8:30 PM

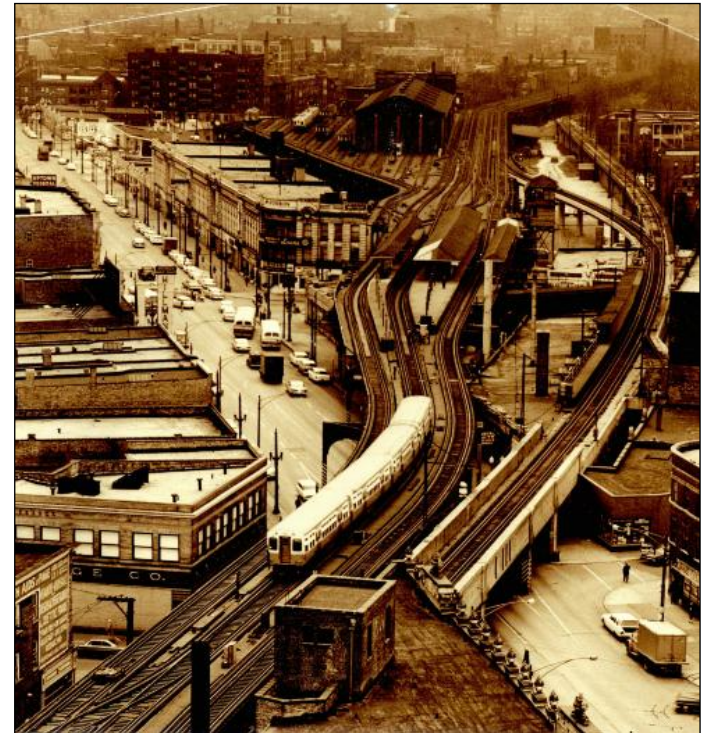
Welcome

- Welcome to the Wilson Transfer Station Public Hearing. Our goal is to gather your feedback on the Environmental Assessment and keep you informed about the next steps for the proposed station renovation.
- Public engagement is critical to the Project's success—we encourage your feedback.
- Public comments will be addressed in writing



What is an Environmental Assessment?

- Evaluates potential impacts to the community, natural environment and historic resources that may result from the Project
 - Describes and compares the Project to the existing environmental setting
 - Analyzes the potential effects of construction and operation of the Project
 - Proposes ways to reduce or eliminate potential negative effects



Preservation of Historic Properties

- Applies to federally-funded projects
- Historic properties analyzed
 - Uptown Square Historic District
 - Uptown Broadway Building
- Considerations to determine effects on historic properties
 - Purpose and Need; cost; effects on the community, environment and other historic resources
- Identify and analyze ways to avoid affecting historic properties



What have we heard from you so far?

- October 2012 public meeting:
 - A modern facility with improved amenities, making the station more accessible and safe, and preserving the historic character of the Uptown community.
- Section 106 Consulting Parties meetings
 - Sunnyside exit: What would the entrance/exit look like?
 - How would pedestrian circulation work?
 - Restore Gerber Building to improve appearance and attract development
 - Safe pedestrian connections around the station on Broadway and Wilson

**An open and transparent public engagement process is
KEY to the Project's success**

In response, the EA and design include:

- Renderings of the Sunnyside access to show appearance and pedestrian circulation
- Over 100 security cameras; improved lighting around the station
- Ramps, elevators, accessible fare gates
- Restored Gerber Building (4620 N. Broadway) for economic development
- Reduce the number of columns on the street and sidewalks
- Aesthetic improvements under the “L” south of Wilson Avenue
- Analysis of historic resources – Expanded area of analysis and consulting parties; conducted five consulting parties meetings between January and September 2013



The Project would benefit...

Transit Patrons

- Safe, comfortable and secure facility
 - 26-foot wide platforms
 - Improved lighting
 - More than 100 security cameras
 - Customer agent at Sunnyside entrance
- Transfer between Red and Purple Lines
- Upgraded infrastructure = Reliable transit service
- Connects station with south end of community

Transit Patrons with Disabilities

- Two new accessible station entrances/exits
- Accessible fare gates
- Ramps and elevators
- Braille signage



The Project would benefit... **Economic Development**

- Restore Gerber Building to attract retail tenants
- Fewer track columns at street level to improve visibility of existing businesses
- Create construction jobs
- Improved transit system = Enhanced connection to job opportunities



The Project would benefit... **Visual Environment**

- Restore Gerber Building façade and clock tower; install new roof and lighting
- Reconstruct façade of Majestic Men's Wear Building (4701 N. Broadway)
- Improve views of Uptown Square Historic District by reducing the numbers of track columns at street level from 31 to 10
- Replace dilapidated infrastructure with a new and modern transit facility



The Project would benefit... Street Environment

Street Environment

- Fewer track columns = better sight lines
 - Increased pedestrian safety and security
 - Safer bicycle operations
 - Safer traffic operations
 - Enhanced lighting in/around station
- Aesthetic improvements under “L” south of Wilson station



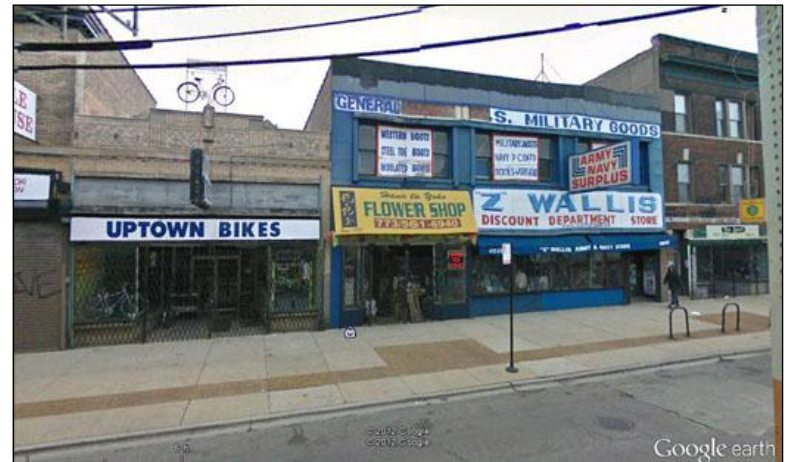
Wilson at Broadway: Before



Wilson at Broadway: After

Would not affect...

- Existing or planned land uses
- Noise
- Air quality
- Energy use
- Minority or low-income population
- During construction:
 - Transit service air quality
 - Hazardous materials
 - Safety and security



Negative effects	How CTA will address them
<ul style="list-style-type: none"> ▪ Pedestrian activities due to sidewalk closures during construction ▪ Bike and traffic operations due to lane closures during construction 	<ul style="list-style-type: none"> ▪ Construction permits ▪ Notify the public of construction schedule
<ul style="list-style-type: none"> ▪ Uptown Square Historic District 	<ul style="list-style-type: none"> ▪ Agreement with Federal Transit Administration and Illinois Historic Preservation Agency for compatible design and construction
<ul style="list-style-type: none"> ▪ Vibration after construction (Uptown Recording Studio) 	<ul style="list-style-type: none"> ▪ Modify column foundation and placement ▪ Use construction materials and methods to eliminate or minimize vibration
<ul style="list-style-type: none"> ▪ Temporary noise and vibration during construction (Uptown Recording Studio and 1110/1116 W. Leland) 	<ul style="list-style-type: none"> ▪ Use construction materials and methods to eliminate or minimize noise and vibration ▪ Notify the public of construction operations and schedule

The Preferred Alternative

- Design with the least overall effect on the Uptown Square Historic District
- Meets the Project's Purpose and Need



The Preferred Alternative



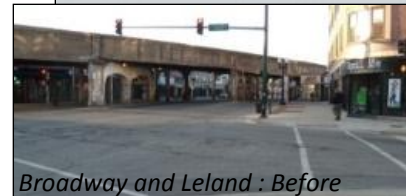
Wide and modern platforms to allow transfers between Red and Purple Lines



An open Wilson Avenue



Safe, secure and prominent station entrance



*Broadway and Leland: After
Enhanced visual environment*

Broadway and Leland : Before

Next steps

- Written comments accepted through 4:30 PM on February 26, 2014
 - This public hearing
 - Email: wilsontransferstation@transitchicago.com
 - U.S. Mail: Wilson Transfer Station Project / CTA
 567 W. Lake Street
 Chicago, IL 60661
- CTA will review and respond to comments for input in the final environmental decision document in Spring 2014
- The final environmental decision document allows the Project to begin construction using federal funds

Tell us what you think

To provide oral comments on the EA:

- Please sign-up at the Welcome Station
- You will receive a card to indicate your position in the speaking queue
- You will have three minutes to speak
- We will adhere to the three-minute time limit
- You can also provide oral comments through the second court reporter

Your opinions matter to us.