

Construction Project Briefing

August 9, 2017



Today's Presentation

- **95th Street Terminal Improvement Program**
- **Wilson Transfer Station, Track, and Structure Reconstruction**
- **Ravenswood Loop Signals Upgrade Project**
- **Illinois Medical District (IMD) Rehabilitation Project**
- **Quincy Loop Station Upgrade**



Project Title: 95th Terminal Improvement Program

Justification of Need:	The terminal is functionally obsolete and does not allow for optimal bus operations and pedestrian flow.
Priority of Project:	High
Total Project Budget:	\$280 M
Construction Contract Value:	Advance Package 1: \$ 2,482,588 Advance Package 2: \$24,697,210 Main Terminal Contract: \$180,000,000
Earned to Date:	Advance Package 1: 100% Advance Package 2: 96% Main Terminal Contract: 26%
Percent Change Orders to Construction Contract:	Advance Package 1: (0.3%) Advance Package 2: 7% Main Terminal Contract: 0%
Percent Time Used:	Advance Package 1: 100% Advance Package 2: 100% Main Terminal Contract: 55%
DBE:	Advance Package 1: Goal: 30% / Commitment: 35.19% / Current Attainment*: 37.26% Advance Package 2: Goal: 30% / Commitment: 30% / Current Attainment*: 31.79% Main Terminal Contract: Goal: 27% / Commitment: 27% Contract is on track to meet the DBE goal Outreach events conducted: 8 *Attainment is based on progress payments and may vary over the life of the project
Funding Source:	Federal, State, Bond



Project Title: 95th Terminal Improvement Program

Estimated Start Date/Estimated Length of Project:	Advance Package 1: NTP Issued June 6, 2014 / 180 days Advance Package 2: NTP Issued July 24, 2014 / 661 days Main Terminal Contract: NTP Issued Nov 24, 2015 / 1118 days
AP1/AP2 Construction Manager/General Contractor:	Walsh / II in One JV
Main Terminal Contractor:	F.H. Paschen / Milhouse JV
Owners Representative:	Jacobs/SQN JV

Detailed Overview of Scope:

The 95th Terminal Improvement Project will create new South and North terminal buildings at 95th on the Dan Ryan Red Line. The new terminal buildings will create a functional and efficient intermodal facility to enhance bus service and improve pedestrian safety. Scope includes the replacement and expansion of the terminal and platform and the addition of bus and pedestrian bridges. New administrative office space will be built and new bus bays will be provided around the terminal buildings.



Project Title: 95th Terminal Improvement Program

Impact on Customers:	Track closures and weekend station closures during construction. Temporary relocation of certain bus operations to nearby streets during construction phasing.
Benefit to System:	Improved customer circulation and safety by relieving congestion. Improved bus service and improved pedestrian safety.
Benefit to Community:	Improved pedestrian safety with new pedestrian bridge over 95 th Street, longer train platform extending to the new South Terminal Building.
Impact on Accessibility:	New south and north terminal buildings with improved accessible routes to buses.
Estimated # of Jobs Created:	3,120 (Direct, Indirect and Induced), 652 (Direct).
Customer Communication Need:	Requires periodic track closures and possible station closures with bus shuttle service. Bus Operations may be relocated to adjacent streets during certain phases of construction.

Comparable Projects:
<ul style="list-style-type: none">Wilson Station



Project Title: 95th Terminal Improvement Program

Construction Progress

Phase	Description	Status
<p>Close-out Advance Package 2: Dan Ryan Retaining Walls</p>	<ul style="list-style-type: none"> ▪ CTA issued Substantial Completion for Milestone 2 on May 15, 2016. ▪ Final Change Order No. 6 was approved at the July 2017 board meeting; final administrative close-out is on-going. 	Ongoing
<p>Design/ Pre-Construction Main Terminal Contract</p>	<ul style="list-style-type: none"> ▪ Design progression on Design Package 5: North Terminal is ongoing ▪ Contractor is evaluating bids for the Building & Site Signage trade work package. ▪ Contractor is preparing various TWPs for Concurrence of Award, such as Sealants, Plumbing, Stairs/Gates/Railings, Metal Wall Panels. 	Ongoing
<p>Construction Main Terminal Contract</p>	<ul style="list-style-type: none"> ▪ South terminal building steel erection is on-going; first layer of concourse building steel complete. ▪ South terminal building steel detailing is on-going. ▪ Backfill of the embankment areas along State and Lafayette nearing completion; electrical ductbank installation complete and other utility tie-ins are on-going. ▪ 95th Street bridge north expansion east pier complete. ▪ Temporary traffic signals and lighting for 95th/Lafayette and 95th/State intersections is complete. ▪ 95th Bridge South Widening demolition is on-going. ▪ Permanent track systems infrastructure installation on east side track is on-going. 	Ongoing
<p>Delay Explanation:</p>		
<p>N/A</p>		



PROJECT TITLE: 95TH TERMINAL IMPROVEMENT PROGRAM



North Terminal East Side Foundation Installation



PROJECT TITLE: 95TH TERMINAL IMPROVEMENT PROGRAM



South Bus Bridge Steel Detailing Work



Project Title: 95th Terminal Improvement Program



Concrete Pour for Elevator Shaft Pit Walls



Project Title: 95th Terminal Improvement Program



Electrical Ductbank Installation under west side Bus Turnaround Area



Project Title: Wilson Transfer Station, Track & Structure Reconstruction

Justification of Need:	The Station is functionally obsolete and does not allow for optimal transit operations.
Priority of Project:	High
Total Project Budget:	\$206 M
Construction Contract Value:	\$152,370,000
Earned to Date:	73%
Percent Change Orders to Construction Contract:	(0.6%)
Percent Time Used:	88%
DBE:	Goal: 25% / Commitment: 27.52% Contract is on track to meet the DBE goal Outreach events conducted: 1
Funding Source:	Federal, State, Bond and TIF
Estimated Start Date/Estimated Length of Project:	NTP 7/25/14; Substantial Completion 1/10/18
Designer of Record:	HNTB
Construction Manager/General Contractor:	Arcadis/Walsh/II In One JV

Detailed Overview of Scope: The station will replace the badly deteriorated station that was built in 1923. The station will have multiple entrances/exits and will include the following features:

- Two (2) new 26 foot – 10 car concrete island platforms with full canopies.
- New main station located on the south side of Wilson Ave., new auxiliary entrance/exit at Sunnyside Ave. and a new auxiliary entrance/exit on the north side of Wilson.
- New elevators, escalators, lighting, signage, fare control, security cameras and art work.
- Replace old existing elevated track structure with new track structure to accommodate the new station platform and the necessary infrastructure to support the new track alignment.



Project Title: Wilson Transfer Station, Track & Structure Reconstruction

Impact on Customers:	There will be minimum impact to CTA customers
Benefit to System:	<ul style="list-style-type: none">• New modern, more spacious and accessible stationhouse with three (3) entrances.• Upgraded track structure infrastructure and signals for more reliable service.• New transfer point between Red and Purple express rail lines.
Benefit to Community:	<ul style="list-style-type: none">• Modern facility with new system upgrades.• Easy access entrances through three (3) entry points.• Bigger platforms that will accommodate higher capacity for passengers to avoid overcrowding.• Platform canopies to protect customers from elements.• New ADA accessible station.
Impact on Accessibility:	Station will be fully accessible upon completion.
Estimated # of Jobs Created:	560
Customer Communication Need:	<ul style="list-style-type: none">• Construction activity notices will be provided to inform businesses and residents regarding temporary stations and construction impacts (noise, dust, street/alley impacts) throughout the project.

Comparable Projects:

- 95th Station – Red Line



Project Title: Wilson Transfer Station, Track & Structure Reconstruction

Construction Progress

Phase	Description	Status
Construction	<ul style="list-style-type: none"> • New track 4 structural concrete deck completed. • New East precast platform deck completed. • New east platform steel canopy installation continues. • Wilson main station build out continues. • Wilson auxiliary station build out continues. • Sunnyside station build out continues. • Sunnyside west ramp steel enclosure, roofing and lighting installation continues. • Sunnyside east ramp steel structure installation continues. • Gerber structural steel roof framing continues. • Installation of east and west elevators equipment build out continues. • Installation of east and west escalators equipment build out continues. • New track 4 - final 2nd concrete pour continues. • New track 4 - open track deck installation continues at south end. • New surface parking lot pavement continues. • New sidewalk – curb and gutter at Wilson’s Auxiliary entrance continues. • New vehicle storage building at Clifton substation continues. 	<p>Completed</p> <p>Completed</p> <p>Ongoing</p> <p>Ongoing</p> <p>Ongoing</p> <p>Ongoing</p> <p>Ongoing</p> <p>Ongoing</p> <p>Ongoing</p> <p>Ongoing</p> <p>Ongoing</p> <p>Ongoing</p> <p>Ongoing</p> <p>Ongoing</p> <p>Ongoing</p> <p>Ongoing</p> <p>Ongoing</p>



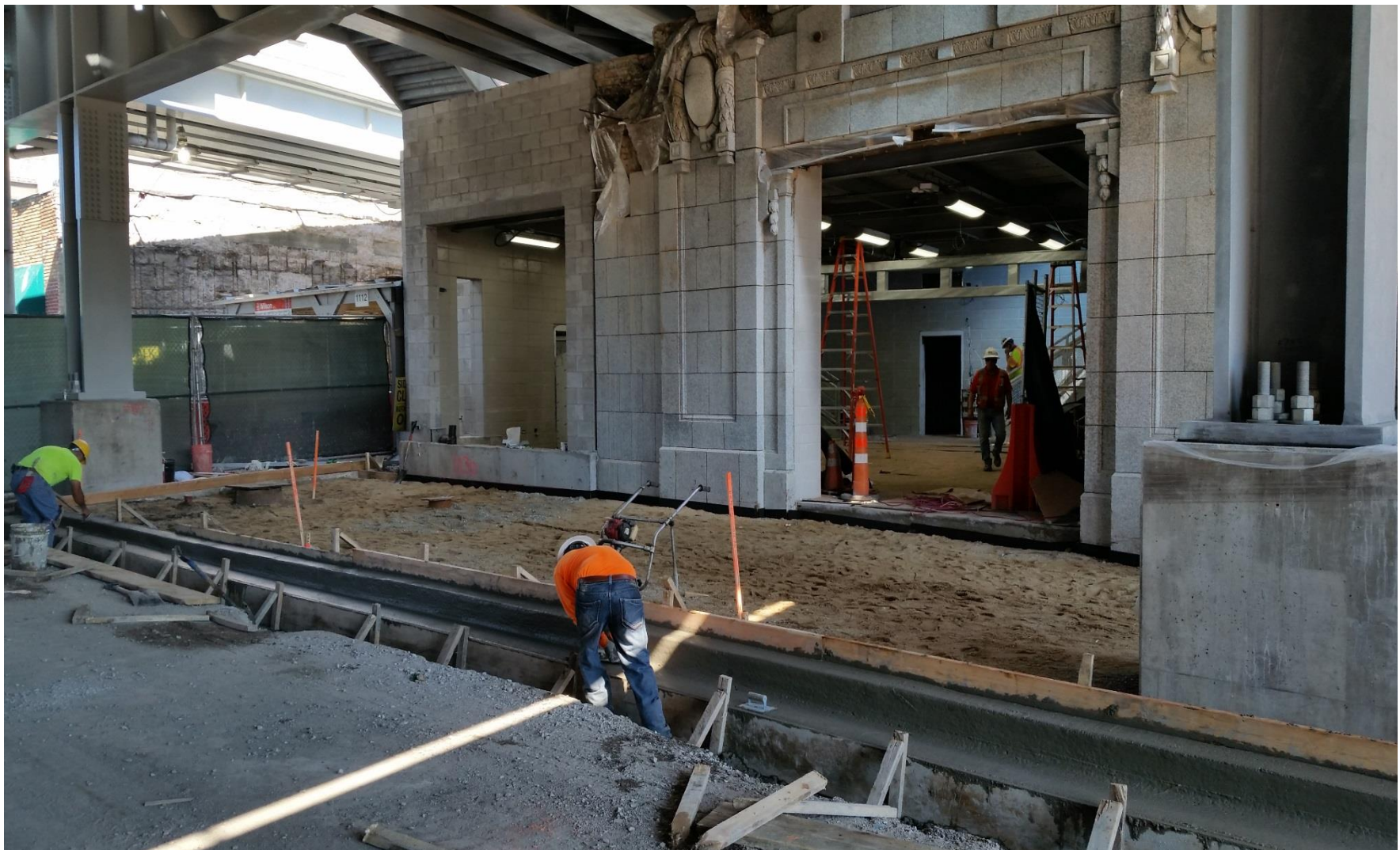
Project Title: Wilson Transfer Station, Track & Structure Reconstruction



Wilson main station build out



Project Title: Wilson Transfer Station, Track & Structure Reconstruction



Wilson Auxiliary station build out



Project Title: Wilson Transfer Station, Track & Structure Reconstruction



Sunnyside station build out



Project Title: Wilson Transfer Station, Track & Structure Reconstruction



New east platform canopy steel structure and track 4 installation



Project Title: Wilson Transfer Station, Track & Structure Reconstruction



New east platform and canopy steel structure



Project Title: Ravenswood Loop Signal Upgrade Project

Justification of Need:	The signal system for the Ravenswood Loop Connector section of the CTA Brown line was originally commissioned in 1975. In order to decrease headways and improve reliability, the system will be replaced with a new system.
Priority of Project:	High
Total Project Budget:	\$ 50 M
Construction Contract Value:	\$ 32.6M
Earned to Date:	36%
Percent Change Orders to Construction Contract:	0
Percent Time Used:	77%
DBE:	Goal: 10% / Commitment: 10% Contract is on track to meet the DBE goal Outreach events conducted: 1 (CTA)
Funding Source:	CTA PBV, CTA Bonds, FTA
Start Date/Length of Project:	November 4, 2015 – January 3, 2018
Designer of Record:	Parsons Transportation
Construction Manager/General Contractor:	Parsons Brinckerhoff/Ragnar Benson Construction, LLC

Overview of Scope: The signal system upgrade will include the following features:

- Removal of all existing signal equipment, cabling, and signal platforms.
- Design & install new platforms, cabling, cable support brackets, and signal equipment.
- Communication network design, configuration, installation, and commissioning.



Project Title: Ravenswood Loop Signal Upgrade Project

Impact on Customers:	54 hour line cut to cut over new signal system.
Benefit to System:	<ul style="list-style-type: none"> • Decreased headways • More reliable equipment • More robust signal network • Better diagnostic abilities • More reliable track circuit indications • Added loss of shunt detection system • Optimized curve speeds (potentially reduce run times)
Benefit to Community:	<ul style="list-style-type: none"> • Maximizing number of trains allowed in the corridor. • Less customer inconvenience due to signal system malfunction.
Impact on Accessibility:	None
Estimated # of Jobs Created:	89
Customer Communication Need:	<ul style="list-style-type: none"> • Construction activity notices will be provided to inform businesses and residents regarding line cut and construction impacts (noise, dust, street/alley impacts) throughout the project.

Comparable Projects:	
<ul style="list-style-type: none"> • Loop Signal Project • Dearborn Signal Project 	



Project Title: Ravenswood Loop Signal Upgrade Project

Construction Progress

Phase	Description	Status
Construction	<ul style="list-style-type: none"><li data-bbox="388 287 938 315">• Installation of cable brackets and cable.<li data-bbox="388 358 1412 386">• Installation of foundations and structural steel to support new signal houses.<li data-bbox="388 429 852 458">• Installation of new signal houses.<li data-bbox="388 501 900 529">• Installation of new signal equipment.<li data-bbox="388 572 1035 601">• Integration and troubleshooting of new system.<li data-bbox="388 644 639 672">• System Cutover.	Ongoing Ongoing Planned Planned Planned Planned

Delay Explanation:
None



Project Title: Ravenswood Loop Signal Upgrade Project



Form removal for Willow Relay House foundations



Project Title: Ravenswood Loop Signal Upgrade Project



Pulling and tying of signal cables



Project Title: Illinois Medical District (IMD) Rehabilitation Project

Justification of Need:	To improve the accessibility of the Illinois Medical District Station and rehabilitate the station to a state of good repair. The project will make all three station entrances ADA accessible, including the addition of an elevator to the Ogden entrance.
Priority of Project:	High
Total Project Budget:	\$23 M
Construction Contract Value:	\$14,221,000
Earned to Date:	18%
Percent Change Orders to Construction Contract:	0%
Percent Time Used:	74%
DBE:	Goal: 30%, Commitment: 30% Contract is on track to meet the DBE goal Outreach events conducted: 2 (CTA)
Funding Source:	TIF
Estimated Start Date/Estimated Length of Project:	NTP: September 26, 2016 Substantial Completion : January 26, 2018
General Contractor:	McHugh Construction/ UJAMAA Joint Venture
Construction Manager / Owners Representative:	STV

Detailed Overview of Scope:

The Illinois Medical District Rehabilitation Project will rehabilitate the Damen and Paulina stationhouses and concourses through structural reinforcements and upgraded exterior envelopes & interior improvements. The project will reconstruct and expand the Ogden Stationhouse providing new upgraded electrical service and elevator access to the platform as well as reinforced structural components. Platform restorations and improvements will also be incorporated. All three station entrances will be ADA compliant and will incorporate lighting improvements, communication system improvements and signage upgrades.



Project Title: Illinois Medical District (IMD) Rehabilitation Project

Impact on Customers:	<p>Station will remain open at all times. Temporary Station Entrance closures will occur and access to portions of the platform will be limited during phased construction work. ADA accessibility will be maintained at either the Paulina Stationhouse or Damen Stationhouse during all phases of construction.</p> <ul style="list-style-type: none"> • 50 maximum nightly single track occurrences. • 5 maximum weekend single track occurrences. • Partial platform closures.
Benefit to System:	Improved customer circulation. Provides accessibility to customers with disabilities at all 3 entrances of IMD Station which maintains the highest ridership on the Congress Branch.
Benefit to Community:	Improved aesthetics and pedestrian safety with new metal panel stationhouse exteriors, stainless steel stationhouse interior panels & new stationhouse storefronts. Upgraded LED lighting, upgraded communication systems and new signage.
Impact on Accessibility:	New elevator installation at Ogden Stationhouse. Concrete resurfacing of Damen & Paulina Concourses.
Estimated # of Jobs Created:	63
Customer Communication Need:	Construction activity notices will be needed to alert customers, businesses and residents to temporary entrance closures, weekend and night work occurrences. Extensive communication will be required for weekend closures and for extended partial platform closures.

<p>Comparable Projects:</p> <ul style="list-style-type: none"> • Quincy Loop Station Upgrade • YNB 5-Stations Project
--



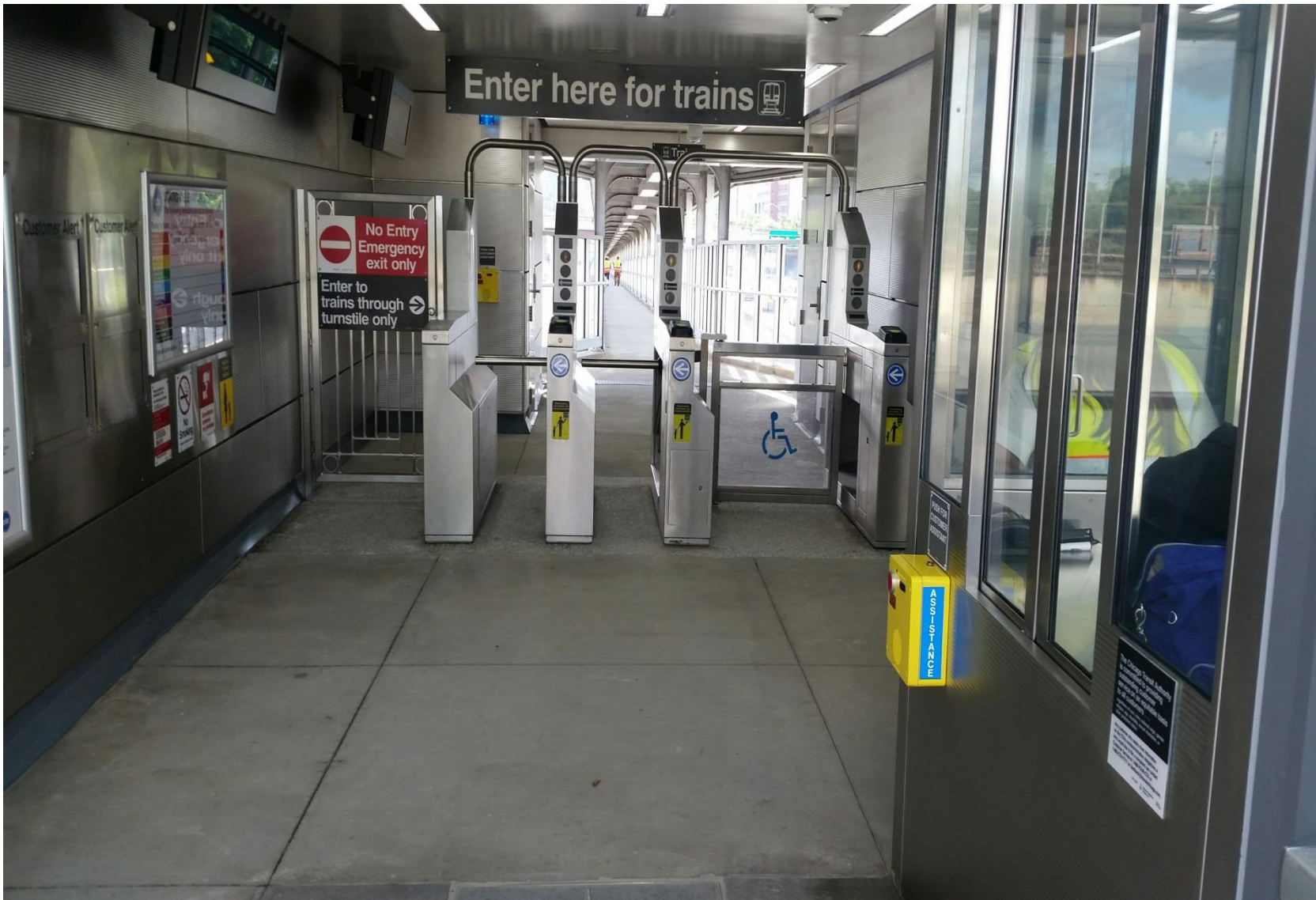
Project Title: Illinois Medical District (IMD) Rehabilitation Project

Construction Progress

Phase	Description	Status
Construction	<ul style="list-style-type: none">▪ Damen Stationhouse / Concourse Rehabilitation.▪ Partial Platform Rehabilitation.▪ Damen Stationhouse Reopening.▪ Ogden / Paulina Entrance Closure for Rehabilitation.▪ Ogden Stationhouse Demolition.▪ Paulina Stationhouse / Concourse Rehabilitation▪ Remaining Platform Rehabilitation.▪ Upgraded Electric Service to Ogden Stationhouse.▪ Caisson Installation for Ogden Extension / Elevator.▪ Elevator Installation.	Complete Complete Complete Complete Ongoing Ongoing Ongoing Ongoing Ongoing Ongoing
Delay Explanation:		
N/A		



PROJECT TITLE: ILLINOIS MEDICAL DISTRICT (IMD) REHABILITATION PROJECT



Damen Station House



PROJECT TITLE: ILLINOIS MEDICAL DISTRICT (IMD) REHABILITATION PROJECT



Damen Concourse



PROJECT TITLE: ILLINOIS MEDICAL DISTRICT (IMD) REHABILITATION PROJECT



Station Opening Press Event



Project Title: Quincy Loop Station Upgrade

Justification of Need:	The Station is not currently accessible. The project will provide another accessible Loop station, as well as provide additional repairs and improvements throughout the station.
Priority of Project:	High
Total Project Budget:	\$18M
Construction Contract Value:	\$11.7M
Earned to Date:	18%
Percent Change Orders to Construction Contract:	0
Percent Time Used:	74%
DBE:	Goal: 30%, Commitment: 30% Contract is on track to meet the DBE goal Outreach events conducted: 1 (CTA)
Funding Source:	TIF, CTA Bonds
Estimated Start Date/Estimated Length of Project:	NTP 7/27/16; Substantial completion 12/24/17
Designer of Record:	Exp US Services
Construction Manager/General Contractor:	Parsons Brinckerhoff/Ragnar Benson Construction, LLC

Detailed Overview of Scope: The station will include the following features:

- Two (2) new Elevators with connection bridges to stationhouses.
- One new exit stair.
- New electrical service.
- New and upgraded Electrical fixtures.
- Painting upgrades.
- Replacement of existing wood floors with new tile floors at both stationhouses.



Project Title: Quincy Loop Station Upgrade

Impact on Customers:	There will be minimum impact to CTA customers.
Benefit to System:	<ul style="list-style-type: none">• Accessible Station.• New upgraded electrical service to the station.• Upgraded lighting.• New stationhouse floors.
Benefit to Community:	<ul style="list-style-type: none">• It will improve beneficial use of the station by providing accessible path to the station.• Easy access entrances through two new (2) entry points.• New outer loop platform exit stair will provide a new exit point from platform to street.
Impact on Accessibility:	Station will be fully accessible upon completion.
Estimated # of Jobs Created:	150
Customer Communication Need:	<ul style="list-style-type: none">• Construction activity notices will be provided to inform businesses and residents regarding temporary stations and construction impacts (noise, dust, street/alley impacts) throughout the project.

Comparable Projects:

- IMD Station – Blue Line



Project Title: Quincy Loop Station Upgrade

Construction Progress

Phase	Description	Status
Construction	<u>Street Level, East Side:</u>	
	• Micropile installation for the Earth Retention System (ERS) completed.	Completed
	• Demolition/excavation work continues.	Ongoing
	• Production Micropiles for the new east elevator is completed.	Ongoing
	• Production Micropile foundations for the bridge foundation column to start .	Planned
	<u>Street Level, West Side:</u>	
	• Demolition/excavation work for west elevator to start.	Planned
	• Micropile installation for the Earth Retention System (ERS) for the west elevator to start.	Planned
	<u>Other activities:</u>	
	• Aerial cables relocation coordination to allow for crane setup for future elevator steel tower. installation continues.	Ongoing
• Work at mezzanine ceiling demolition continues.	Ongoing	

Delay Explanation:

N/A



Project Title: Quincy Loop Station Upgrade



East side – demolition excavation for elevator micropiles



Project Title: Quincy Loop Station Upgrade



East side – elevator micropiles

